

FLOODING

Plan ahead
and *protect*
your home



engie


NORTH
EAST
LINCOLNSHIRE
COUNCIL
www.nelincs.gov.uk

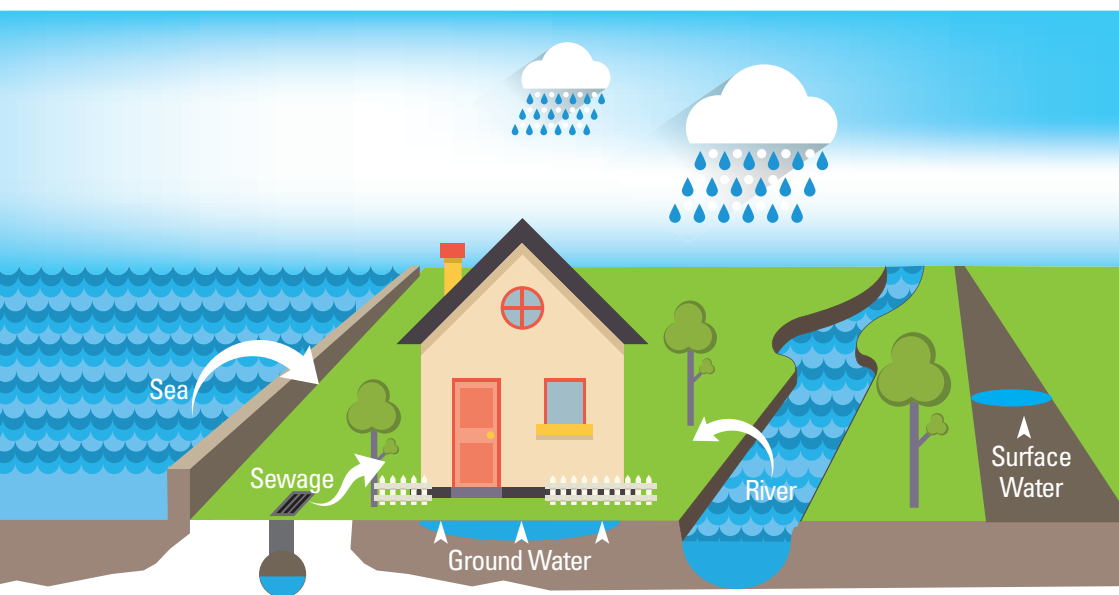
Working in Partnership

www.nelincs.gov.uk/flooding



Plan ahead and ***protect your home.***

Many properties within North East Lincolnshire are at risk of flooding from different sources, as shown in the diagram.



Some flooding can happen suddenly and with little or no warning. You are legally responsible for protecting your home from flooding. The Council and others will not always be able to prevent it from happening, but there are steps you can take.

This leaflet explains how you can find out if your home is at risk and what action you can take to protect it. A lot of further information is available at www.nelincs.gov.uk/flooding. If you do not have internet access at home you can visit a library where these facilities are available.

1. Are you at risk?

You can check the flood maps on the Environment Agency website to see if you are at risk of flooding from **Rivers**, the **Sea** or **Surface Water**.

www.gov.uk/environment-agency

There are no maps that will provide you with information on the Groundwater flood risk. There is a map showing the active springs in the borough which can be found on our website, www.nelincs.gov.uk/flooding. If you are concerned you are at risk of groundwater flooding please call us for more information on 01472 324433.

2. Sign up to receive flood warnings

Call 0345 988 1188 or visit www.gov.uk/environment-agency to sign up for Environment Agency flood warnings for **River** and **Sea** flooding.

Surface Water flooding is difficult to predict and there are no warning systems in place for when or where it might occur. The Met Office gives advance warning of severe weather, including heavy rainfall, but will not be able to say exactly where in the borough might be flooded. The most up to date information will be provided on their website www.metoffice.gov.uk.

There are steps you can take to reduce the risk and limit the damage caused if you are worried that your property could be flooded.

3. Protect your property

Protecting your property will help reduce the damage and disruption flooding can cause. Repairs should be cheaper and you won't need to spend as much time away from your home.

You are advised to seek professional guidance from a building surveyor before making changes to your home. Preventing excessive depths of water from entering your home could cause structural damage.

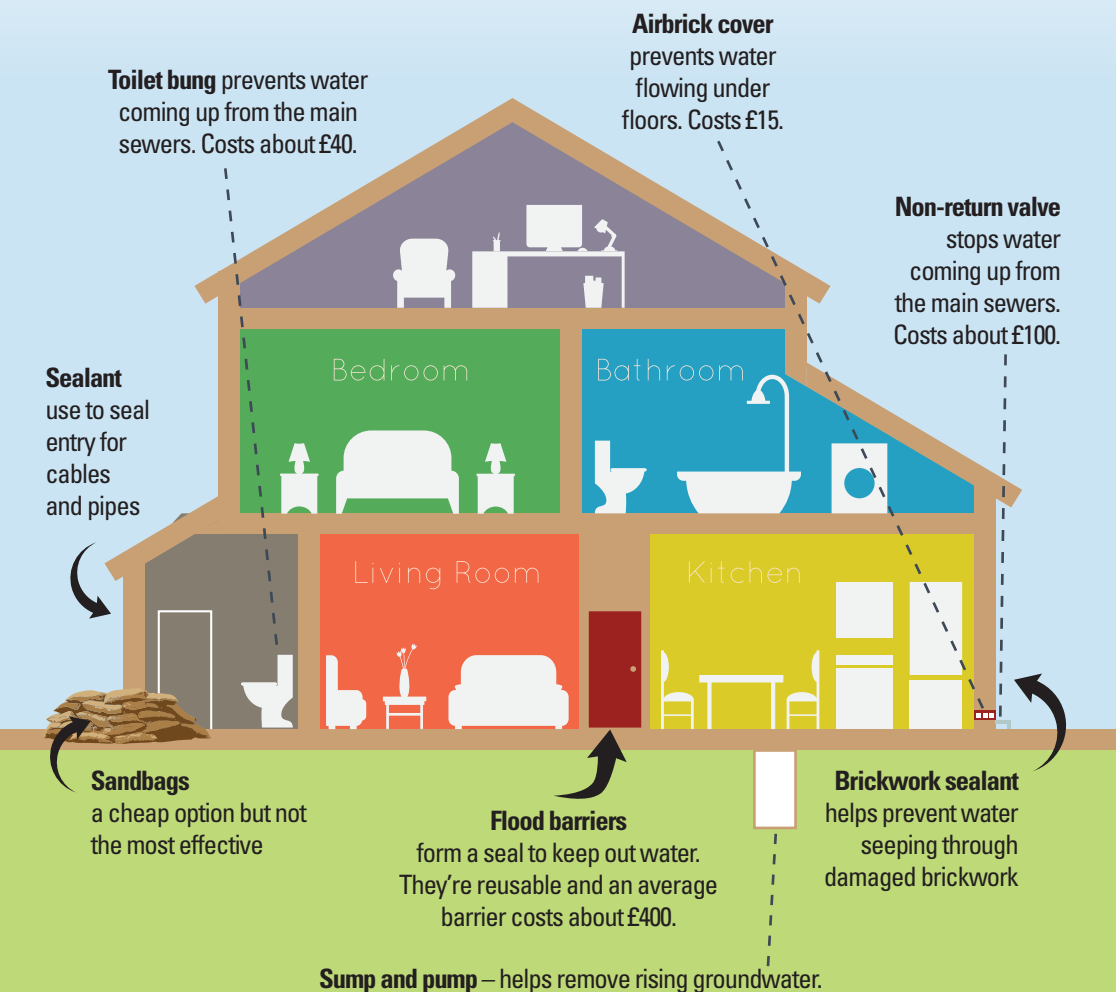
When flood waters rise, they are able to enter your home through the following ways:

- Doors and windows
- Floors and air bricks
- Walls
- Drains including toilets, showers and sinks
- Service entry points (e.g. gas, electricity)

Flood Resistance

There are measures you can take to help prevent water from entering your home. This is known as **property level protection**. These measures include the use of door barriers and air brick covers.

It is important that you consider all of the possible entry points of water into your property. The diagram shows some common property level protection measures that will help prevent flood water entering your home. The costs given are indicative only and do not include fitting. Actual costs will vary depending on individual properties.



The National Flood Forum has created the Blue Pages website www.bluepages.org.uk/ to provide more information on the different products available and where you can buy them. Some are also available in local DIY stores. Look for the BSI Kitemark - it shows that the products have been subject to strict independent testing. Think about every entry point where water could get into your property. You may also wish to seek professional advice before buying or installing any products.

Sandbags are not the most effective way of protecting your home. Their success depends on how they are laid. Even when carried out by a skilled workforce they have a high rate of failure. Purpose-made products such as door barriers perform better and can be used again.

The Council will not supply you with sandbags to protect your property.

Flood Resilience

Sometimes flood water is so deep there's nothing you can do to keep it out. Preventing deep water from entering your home could make it unstable with the risk of collapse, sometimes it's better to let the water in. There are still measures you can take to make your property more **resilient** to flooding.

This means using construction methods and materials that will allow your property to flood but will make it easier and quicker to recover from flooding.

The following measures can be taken:

- Raise valuable items above the flood level on shelves.
- Raise electrical sockets and put electrical equipment on plinths.
- Replace fitted carpets with tiled floors and rugs.
- Use water resistant skirting boards and materials for walls.
- Use stainless steel, plastic or solid wood for kitchen and bathroom cupboards.



4. What to do if a risk remains

If you can't stop floodwater entering your property prepare a household emergency plan to help keep you safe and to minimise the damage to your property and possessions.

Even when there are defences in place it is a good idea have an emergency plan as floods can still happen if they become overwhelmed.

The Humber Emergency Planning Service has produced some guidance on how to create your plan which is available on their website

www.heps.gov.uk/lets-get-ready/.

Keep Informed

The following sources of information will be useful in the event of heavy rainfall or flooding in the area:

- Local television and radio news – BBC Radio Humberside 95.9FM
- NELC website – www.nelincs.gov.uk
- NELC Facebook page – www.facebook.com/NELCouncil
- NELC Twitter account – [@NELCouncil](https://twitter.com/NELCouncil)
- Met Office website – www.metoffice.gov.uk
- Met Office Twitter – [@metoffice](https://twitter.com/metoffice)
- Environment Agency – www.gov.uk/environment-agency
- Environment Agency Twitter – [@EnvAgency](https://twitter.com/EnvAgency)
- Environment Agency Floodline number – 0345 988 1188

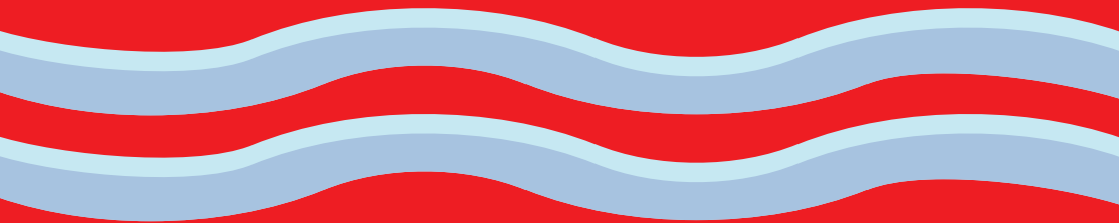
Further Information

The Council's website contains more detailed information on what has been outlined in this leaflet so please visit to find out more information.

- www.nelincs.gov.uk/flooding

The following sources of information will also be useful:

- 'Know your flood risk' campaign – www.knowyourfloodrisk.co.uk
- National Flood Forum – www.nationalfloodforum.org.uk
- Blue Pages – www.bluepages.org.uk/



More information at
www.nelincs.gov.uk/flooding