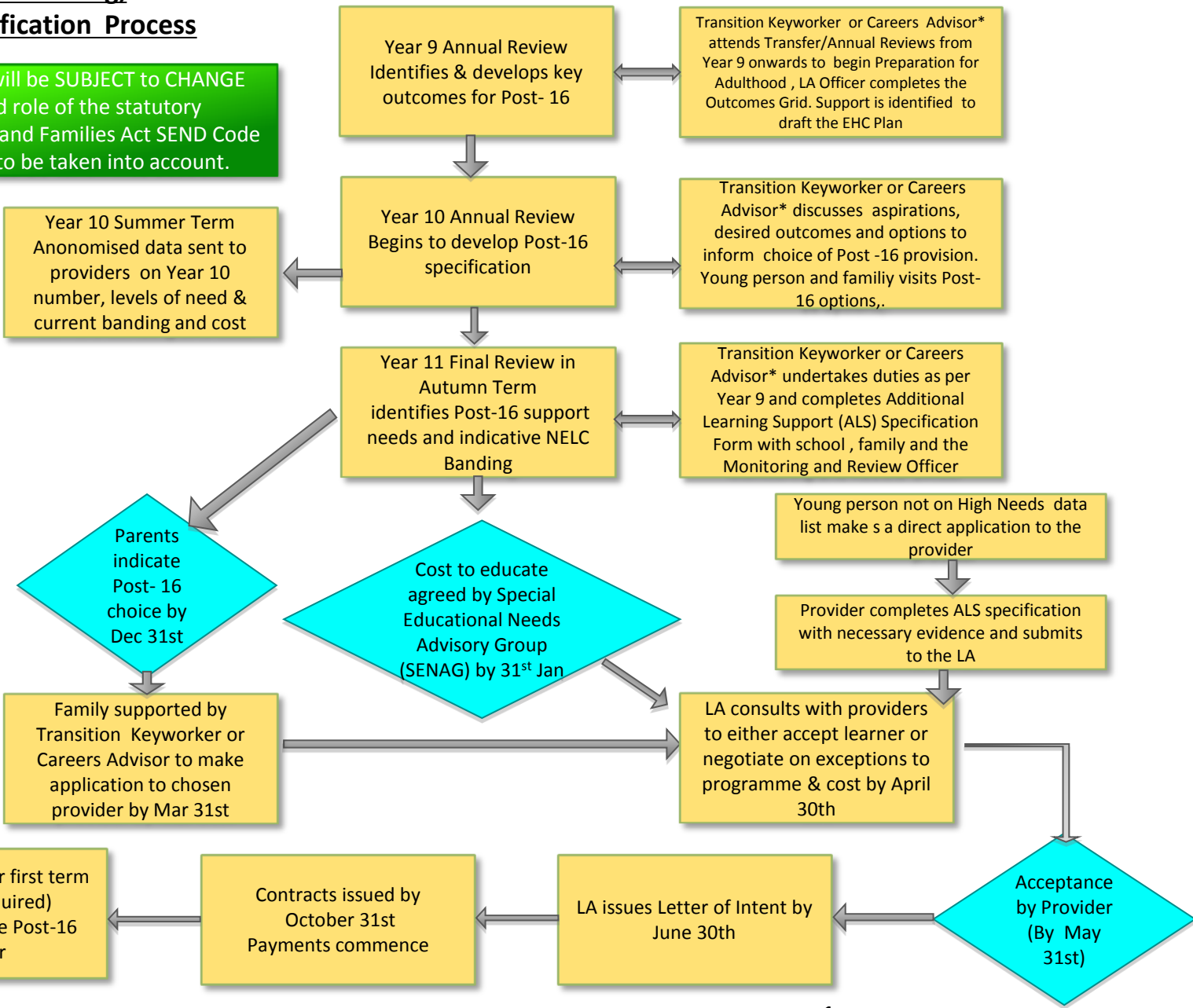


DRAFT Post -16 FE Planning, Decisions & Specification Process

This DRAFT process will be SUBJECT to CHANGE as the timing and role of the statutory consultation (Children and Families Act SEND Code of Practice) needs to be taken into account.

*Transition Keyworkers support Special Schools and Careers Advisors support mainstream. Exceptions are agreed individually.



**DRAFT Post -16 Planning,
Decisions & Specification Process –
Continuing Learner**

