

### *Question 8*

---

#### **What should I do if I see someone cutting a tree?**

Whether you know the tree is in a Conservation Area or not please contact the Trees and Woodlands Officers who will be happy to take down the details and follow up the call.

You are not obliged to give your name or address.

### *Question 9*

---

#### **How do I find out if the trees are protected or in a Conservation Area?**

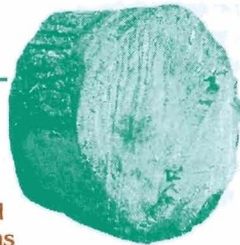
Phone the Council on the number below and we will assist you. If we are unavailable at the time you may leave a message and we will return your call.

### *Question 10*

---

#### **How do I get advice on tree pruning?**

We are always willing to meet and discuss the options and best means of achieving the aims involved in the pruning work.



---

For more information or advice please contact:  
Trees and Woodlands Officer, or Assistant Trees and Woodlands Officer

Tel. (01472) 324271 or 324273

We can also be e-mailed via the Council's website;  
[www.nelincs.gov.uk](http://www.nelincs.gov.uk)



For more information or advice please contact:

Trees and Woodlands Officer,

or Assistant Trees and Woodlands Officer

Tel. (01472) 324271 or 324273

We can also be e-mailed via the Council's website;

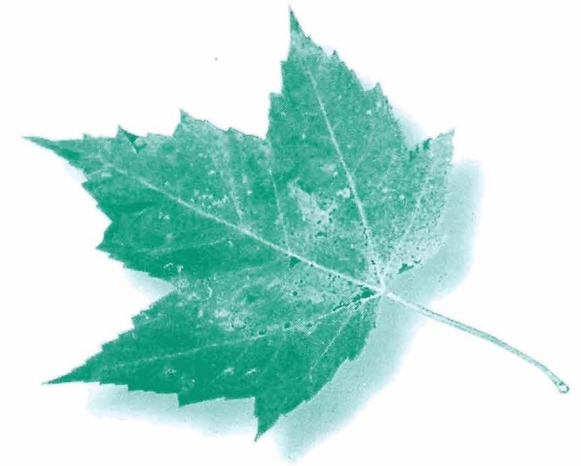
[www.nelincs.gov.uk](http://www.nelincs.gov.uk)



*Planning for our Future*

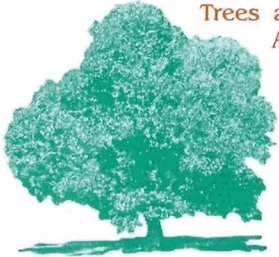
---

# Conservation Areas and Trees



## Introduction

North East Lincolnshire has 14 Conservation Areas. One of the benefits of living in a Conservation Area is the greater consideration given to maintaining and enhancing the existing character of the area. This extends to the trees growing in Conservation Areas.



Trees are protected by Conservation Area and Tree Preservation Order legislation to retain them for the benefit of all. They enhance the landscape and our lives by their existence, and contribute immeasurably to the quality of our lives.

Effectively a Conservation Area grants the same protection to trees as a Tree Preservation Order. There are some minor differences but not many. The questions below are those commonly asked of the Trees and Woodlands Officer of the Council and may help answer your own questions. If you would like further information we are happy to assist.

## Question 1

### **Do I have to apply for permission to cut my trees?**

Under section 211 of the Town and Country Planning Act 1990 you must inform us of your intention to prune, fell, lop, or top any tree in a Conservation Area. The notification must be in writing, it must detail the tree(s), their location, the reason for the works and the type of works intended.

We can provide you with an application form to assist you if you wish. You are not obliged to use the form.



## Question 2

### **What does the Council do when they have received my notification?**

A site visit will be made to assess the proposed works. If the Council decide the works are not appropriate then a Tree Preservation Order may be made to protect the trees.

If the Council has no objection then the Council may write back informing you that you may proceed.

In any event, when you send in your notification the Council will send back an acknowledgement informing you of the receipt of your notice. The acknowledgement includes a statement that if you have not heard within 6 weeks from the date of your notification you may proceed with the works identified in writing to the Council.

## Question 3

### **Are all my trees protected?**

No, for the purposes of a Conservation Area trees must have a stem diameter of 75 mm or greater to be classed as a tree.



## Question 4

### **Do I have to replace the tree(s)?**

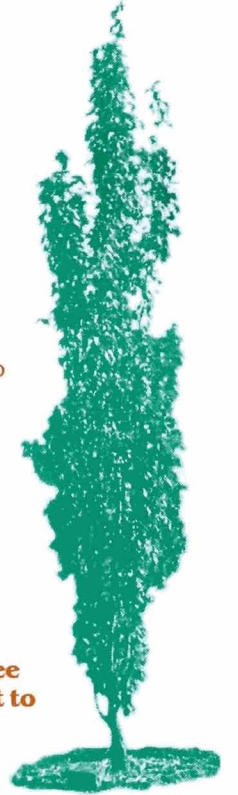
Yes, if a tree is removed in a Conservation Area without permission. It will also be necessary to replace any tree that has died, or is removed because it is dead, dying, or dangerous.



## Question 5

### **What happens if I chop a tree without permission?**

If convicted in a magistrate's court for chopping or felling a tree in a Conservation Area you may be liable to a fine of up to £20,000. If the works are not sufficient to destroy the tree a fine for each offence of up to £2,500 may be imposed.



## Question 6

### **What happens if you make a Tree Preservation Order because I want to chop my tree?**

Once the tree(s) have been protected by a Tree Preservation Order you will have to make an application for any works you wish to do to the tree.

Although the Council has the authority to refuse works to trees protected by a Preservation Order you have a right of appeal to the secretary of state if you feel aggrieved by the Council's decision.

## Question 7

### **What does it cost to get the councils permission to cut my trees?**

There is no charge for making an application to work on protected trees or a section 211 notification for trees in a Conservation Area.