

Looking after hearing aids – Earmoulds: Re-tubing and Trimming tubing

1- Re-tubing an existing earmould – Wash Your Hands before and after doing this

Tubing needs to be in good condition to let the sounds go from the hearing aid into the ear.

Some people's tubing may need replacing more often than others.

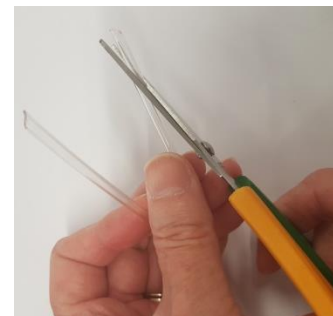
The tubing might need replacing if-

- it is yellow/discoloured
- it is brittle/hard
- it is sliding out of the earmould most days
- it has wax in it which cannot be removed

1. Pull out the old tubing. Do not throw it away.



2. Cut a slant on one end of the new piece of tubing.



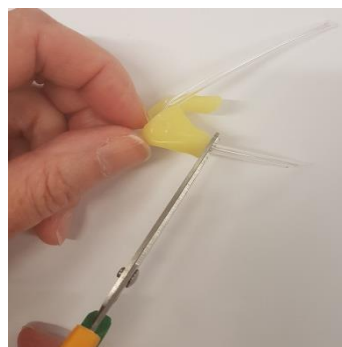
3. Push the cut/slanted end of the tubing from the outside of the earmould until it pokes out the other end.



4. Pull the tubing until the bend reaches the earmould and looks like this.



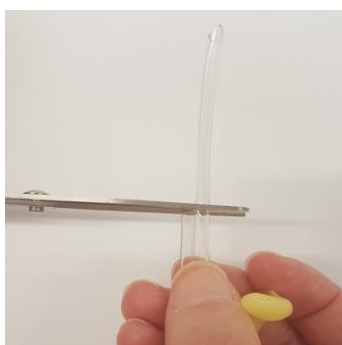
5. Trim the cut end of the tubing close to the earmould. Any tubing sticking out could rub the ear and make it sore. Feel it with your finger.



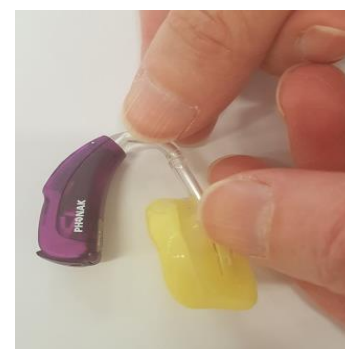
6. Take your old tubing and line it up with the new tubing.



7. Cut the new tubing to the same length.



8. Fit the tubing and earmould back onto your hearing aid.



Hints and tips

Don't worry if it doesn't work first time- Just pull the tubing out and try again!

2- Trimming tubing in a new earmould

You may get a new earmould sent through the post for you to fit at home.

The tubing will be too long and needs cutting to fit. You will need 2 people for this!

1. Put the new earmould in the ear. The tubing should stick up.



2. Put the hearing aid over the ear where it normally sits. Get a pen. Make a mark on the tubing where it just overlaps the end of the hook (see arrow)



3. Take the earmould out of the ear and cut it with scissors.



4. Fit the tubing and earmould back onto your hearing aid.



Hints and tips

- If in doubt cut it a bit longer to start with and trim it down a bit at a time.
- It is a good idea to only re-tube one hearing aid at a time so you join the correct hearing aid to the correct earmould.
- Remember: **Blue dot = left hearing aid** **Red dot = right hearing aid**
- There are lots of videos on the internet to help you too!
- When you finish your hearing aids and earmoulds should look like this-



Left ear



Right ear

Remember: ETHV or the Audiology Department staff can help you if you need more help or advice. If you would like your earmould re-tubing on ETH's next visit to school please ask (the next visit date is at the bottom of the feedback form). If it needs replacing sooner please contact the Audiology Department.