

## **North East Lincolnshire Council**

### **NOTICE for display by an applicant for a Pavement Licence. [Clause S 2] of the Business and Planning Act 2020.**

We **County GY Ltd**,

do hereby give notice that on 10-07-2020 we have applied to North East Lincolnshire Council for a 'Pavement Licence' at: **21 – 23 Old Market Place, Grimsby, DN31 1EW**

known as: **The Parity**

The application is for: **Outdoor seating for serving of food and drink**

Any person wishing to make representations to this application may do so by emailing the **Highway Asset Engineer, Engie** at **HWAY\_ASSETS@nelincs.gov.uk** **by: 17<sup>th</sup> July 2020.**

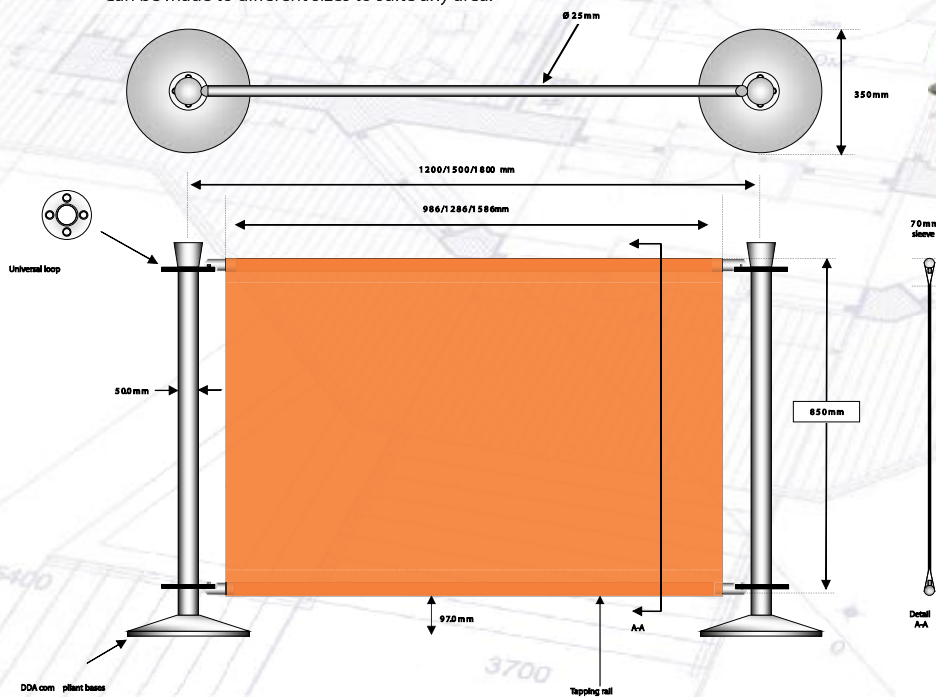
The application and information submitted with it can be viewed on the Council's website: **[www.nelincs.gov.uk/roads-parking-transport](http://www.nelincs.gov.uk/roads-parking-transport)**

Signed: **M Deakins (Ross Davy Associates) on behalf of County GY Ltd**

Dated: **20-07-2020**

# café barriers technical guide

- Removable fabric barrier with stainless steel posts.
- Barrier is 1200mm high and 2000mm long as standard.
- The stainless steel post is 60mm diameter with 350mm diameter base 25mm thick.
- Mild steel powder coated option available. (Various RAL colours to suit).
- The round base allows ease of removal and has a rubber protection strip with a decorative stainless steel trim on the edge.
- The vinyl mesh fabric is 1000mm high and is digitally printed with the background colour.
- Branding is available on the vinyl mesh fabric.
- Surface mount and ground sockets also available.
- Direct fixed ground installation available.
- Can be made to different sizes to suite any area.



## base weights

- Indoor weight 11kg
- Standard weight 17kg
- Heavy weight (Granite base) 27kg

**inn-fresco**  
OUTDOOR SOLUTIONS

Newmarket Approach, Leeds, LS9 0RJ Tel: 0870 80 30 199  
Fax: 0113 249 2228 www.inn-fresco.co.uk



## Aluminium Bistro Outdoor\* Tables Range - 345/outdoor\*\_bistro\_tables



Only £57.95 (£69.54 inc VAT)

Aluminium Bistro Tables with Stainless Steel Top For Outdoor\* use

Call 01206 820200 for a FREE Quotation or Help with this product.

Available from Stock

Quantity:

[Add to basket](#)

[Add to Wish List](#)

[Click Image to Enlarge](#)



[Like](#)

0



[Tweet](#)

0

[g+](#)

0

### Product Information

### Reviews

- ✓ Ideal for any Catering Requirement
- ✓ Lowest Prices in the UK - Guaranteed!
- ✓ Combines Strength with Light Weight
- ✓ Versatile and Economic
- ✓ Designed by ChairsGB for Contract Use
- ✓ Easy Clean Surfaces
- ✓ Recommended that tables are brought inside in poor weather conditions

Dimension	Metric (mm)	Imperial (Inches)
Height	700	27.56
Seat Height	0	0
Depth	700	27.56
Width	700	27.56

## Aluminium Outdoor Bistro Chairs - 320/bistro\_chairs

Special Offer



Only £21.95 (£26.34 inc VAT)

Heavy Duty 2mm Aluminium Tube Outdoor Bistro Range

Call 01206 820200 for a FREE Quotation or Help with this product.

LIMITED STOCK

Quantity:

Normal Price: £27.45

You Save: £5.50

% Saved: 20.04%

[Add to basket](#)

[Add to Wish List](#)



[Click Image to Enlarge](#)



[Like](#) 0 [Tweet](#) 0 [g+](#) 0

### Product Information

### Reviews

- ✓ ChairsGB Best-selling Aluminum Range
- ✓ Suitable for Indoor and Outdoor Use
- ✓ Guaranteed Lowest Price in the UK
- ✓ Combines Strength with Light Weight
- ✓ Manufactured to the Highest Quality
- ✓ Constructed from Heavy Duty 2mm Aluminium Tube
- ✓ Versatile and Economic
- ✓ Designed by ChairsGB for Contract Use
- ✓ Easy Clean Surfaces
- ✓ Welded Joints

Dimension	Metric (mm)	Imperial (Inches)
Height	750	29.53
Seat Height	440	17.32
Depth	630	24.8
Width	555	21.85



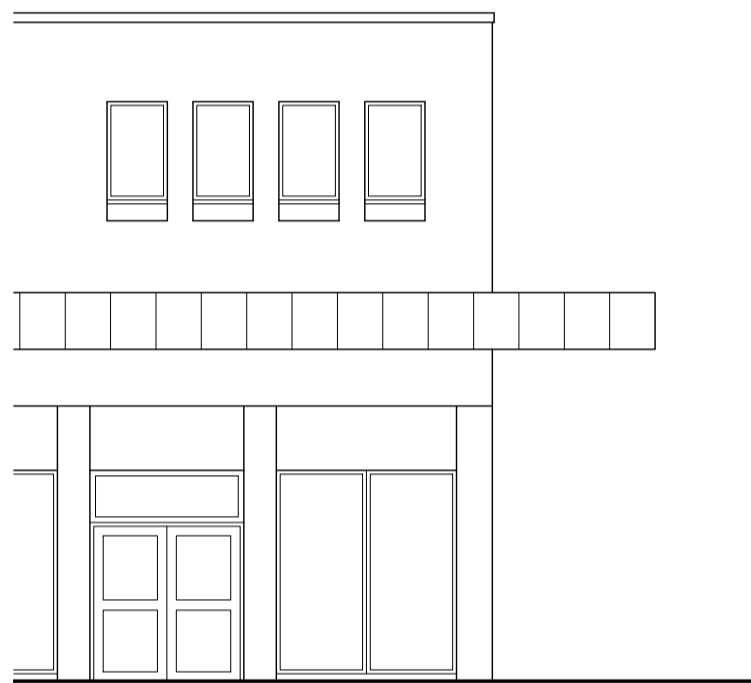
Existing North Elevation

1:100



Proposed North Elevation

1:100



Existing East Elevation

1:100



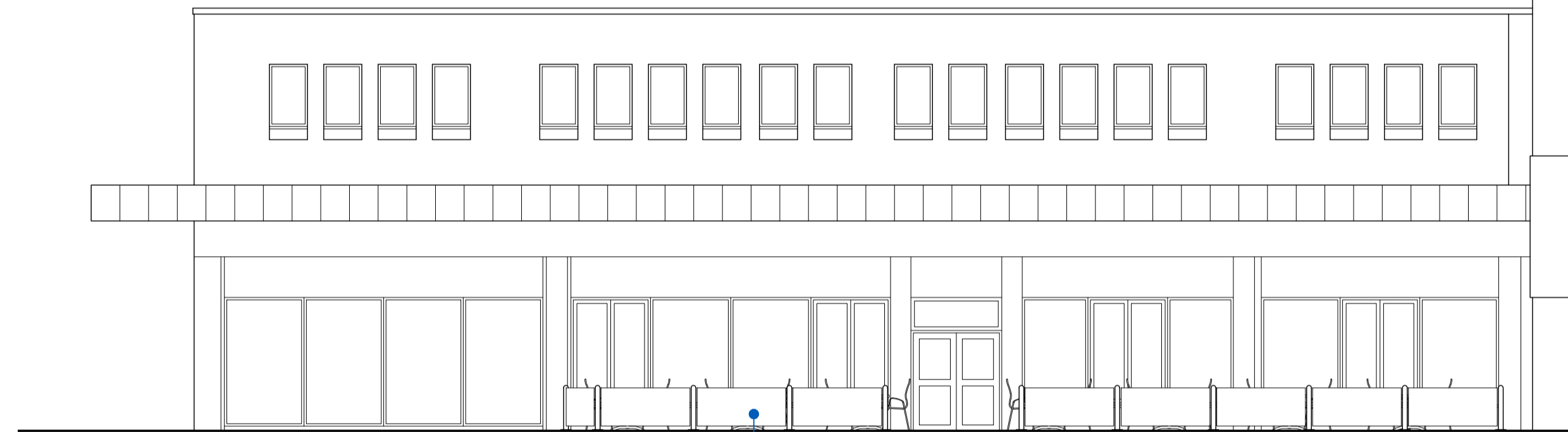
Proposed East Elevation

1:100



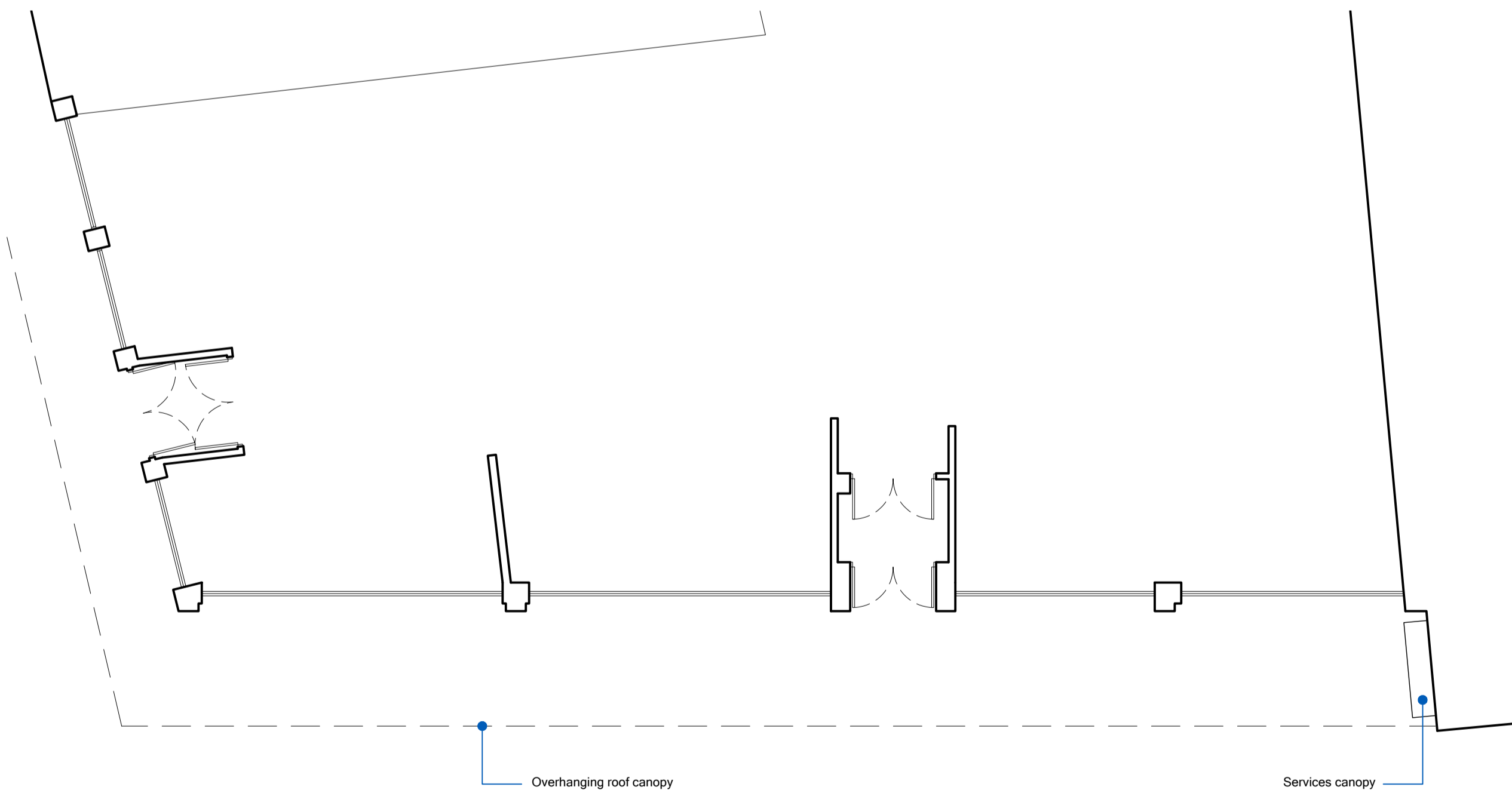
Proposed East Elevation

1:100



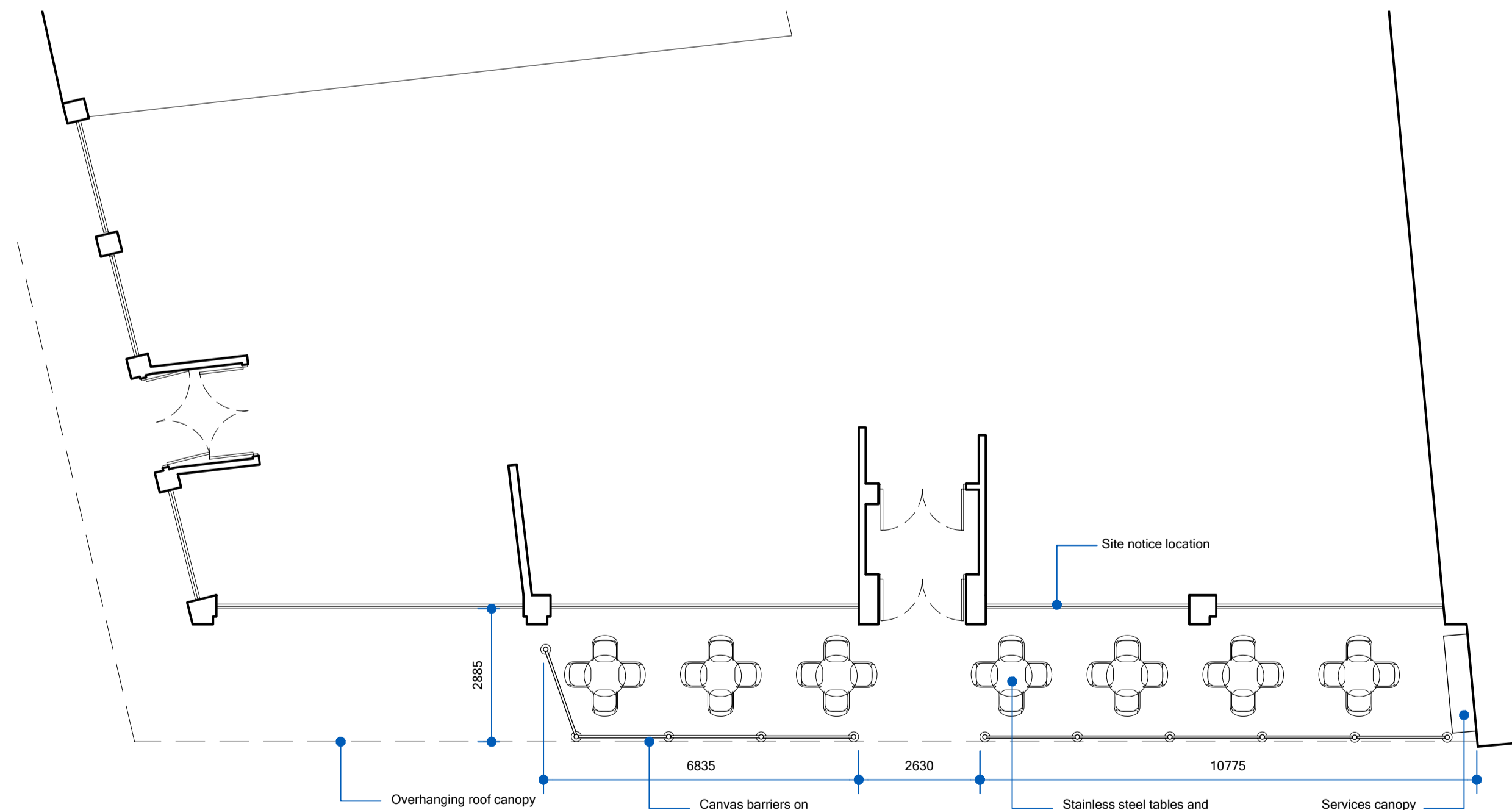
Proposed North Elevation

1:100



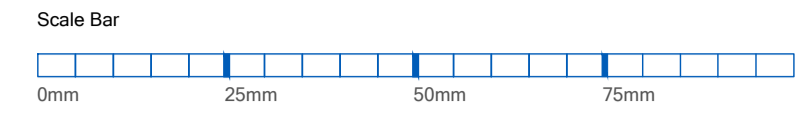
Existing Plan

1:100



Proposed Plan

1:100

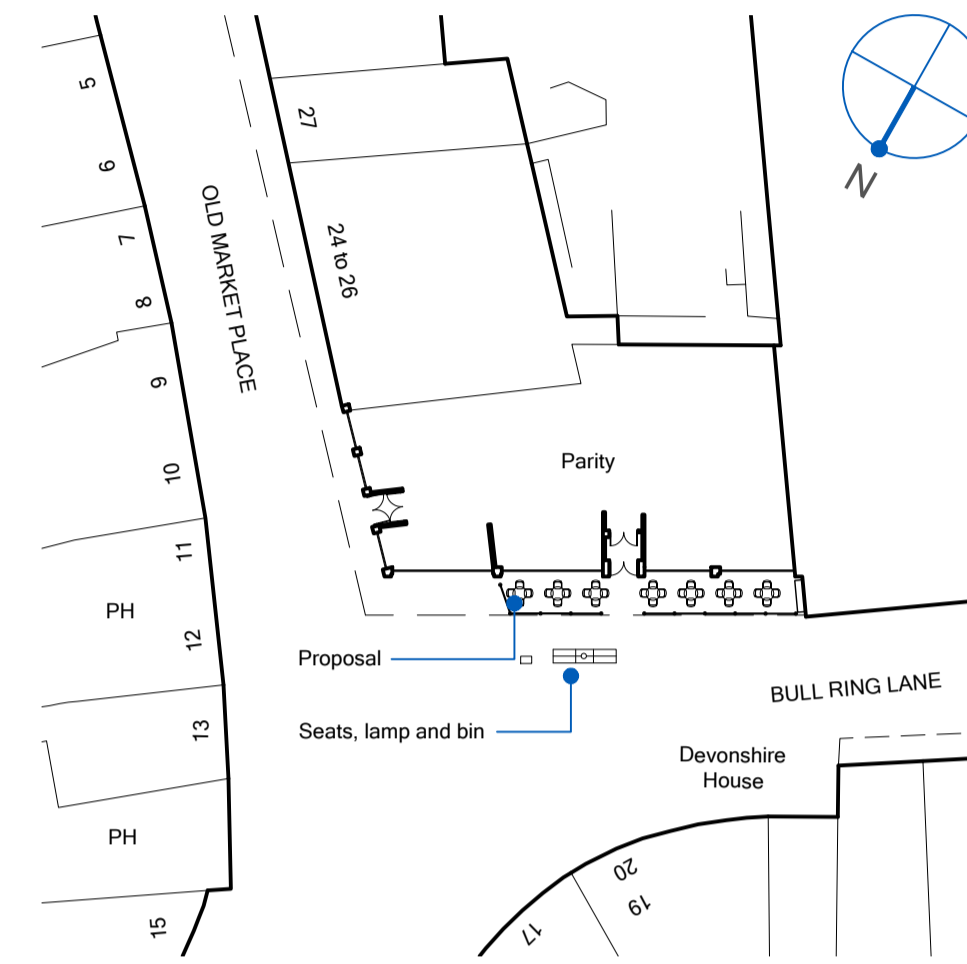


- Notes
- Drawing copyright of Ross Davy Associates
  - Used figured dimensions only, do not scale from this drawing
  - All materials specified are to be used in strict accordance with manufacturers written instructions and current codes of practice
  - Should the project fall under the scope of the Equality Act, Paving Work Act or the CDM Regulations, it is the Employer's responsibility to include the following:
    - Disabled Access Audit
    - Party Wall Notice and Survey (if required)
    - Pre-Construction Health and Safety Plan
  - These drawings are to be considered as Preliminary and for information only until technical approval has been obtained from the relevant Local Authority/Approved Consultant. Commencement of work on site prior to these approvals is at the Client's/Contractor's risk.

Inspections and Surveys  
 Where elements of the construction are not visible during the survey, it is the contractor's responsibility to identify structural elements such as floor joists and supporting structures, prior to any demolition works and inform client / architectural consultant. Additional works may therefore be necessary. Our survey does not include any destructive investigation.

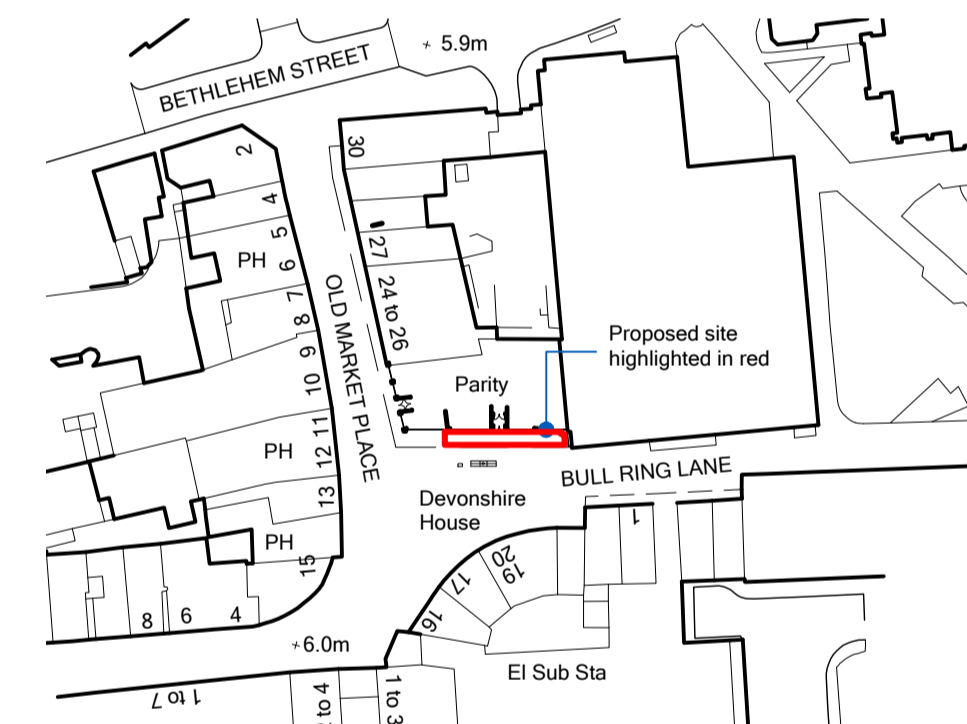
Drawing Revisions

A	14-07-2020 - Further notes / dimensions added
---	---



Block Plan

1:500



Reproduced from "PROMAP" by permission of Ordnance Survey on behalf of the Controller of H. M. Stationary Office Licence No. 100039470.

Crown copyright. All rights reserved.

Site Location Plan

1:1250

**Ross Davy Associates**  
 Pelham House, 1 Grosvenor Street,  
 Grimsby, N.E. Lincolnshire, DN32 0QH  
 Tel: 01472 347956  
 Email: design@rossdavyttd.co.uk  
 Web: www.rossdavyttd.co.uk

Project Proposed Tables and Seating at The Parity, 21 -23 Old Market Place, Grimsby

Drawing Title Existing and Proposed Plans, Elevations, Site Plans

Drawn MD Scale As Noted

Date July 20 Size A1

Drawing No. RD:4678 - 01 A

APPROVAL