



Table of Contents

Introduction	3
Key findings	6
Choice and flexibility.....	6
Availability	6
Quality	7
Affordability.....	7
1. Supply of childcare	8
1.1 Early education.....	8
1.2 2-year old funding pilot	11
1.3 Stocks of registered childcare.....	12
1.4 Special Educational Needs (SEN) provision.....	13
1.5 Cost of childcare.....	13
2. Demand for childcare	17
2.1 FIS childcare enquiries	17
2.2 Occupancy.....	20
2.3 Vacancies	21
2.4 Waiting lists	22
3. Appendices	23
3.1 Sources of information.....	23

Introduction

The Childcare Act (2006) requires North East Lincolnshire (NEL) Council, like all other local authorities in England, to ensure there is sufficient childcare for parents and carers who are working, studying or training. It also highlights the need for local authorities to pay particular attention to the childcare needs of specific target groups for instance:

- *Low-income families;*
- *Black and minority ethnic families;*
- *Gypsy, Roma and traveller communities;*
- *Families with disabled children or disabled parents;*
- *Families living in rural or inaccessible areas;*
- *Armed Forces families.*

The duties in the act (section 6) require the council to shape and support the development of childcare provision in NEL in order to make it flexible, sustainable and responsive to the needs of the community. This role is described as a 'market management' function, whereby the local authority supports the sector to meet the needs of parents, children and young people, along with other stakeholders.

The council also has a duty to undertake a refresh of the full detailed Childcare Sufficiency Assessment (CSA) on an annual basis.

The refresh of the CSA is published each year in accordance with this duty under the Childcare Act 2006 and brings together key data that may impact on existing childcare arrangements within NEL and identifies any emerging changes that may impact on the supply or demand for childcare in the area.

In 2004, the Government published a 10-year Strategy for Childcare¹, to ensure that every child has the best possible start in life; whilst also providing the option for parents, particularly mothers, to work and progress their careers. The strategy covers four primary categories, which will be loosely referred to within this CSA:

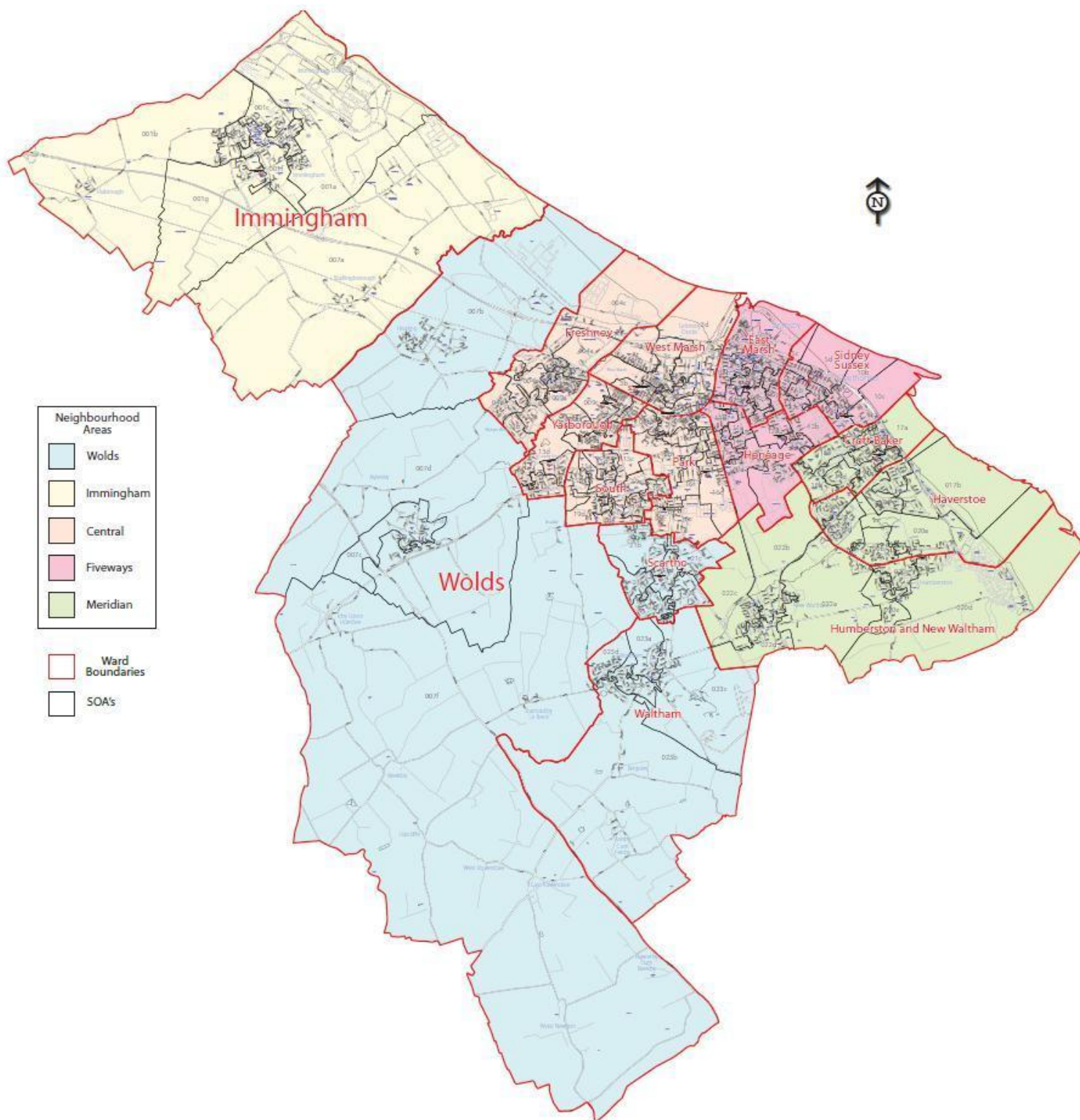
- **Choice and flexibility:** *parents to have greater choice about balancing work and family life;*
- **Availability:** *for all families with children aged up to 14 (17 for disabled children) who need an affordable, flexible, high quality childcare place that meets their circumstances;*
- **Quality:** *high quality provision with a highly skilled childcare and Early Years workforce, among the best in the world;*
- **Affordability:** *families to be able to afford flexible, high quality childcare that is appropriate for their needs.*

For the 2011/12 CSA Refresh, analysis has been broken down to a sub-authority level and represented by the five neighbourhood areas listed below:

Neighbourhood Area
Central
Fiveways
Immingham
Meridian
Wolds

¹ Source: DfE, *Choice for parents, the best start for children: A ten-year strategy for childcare*, December 2004

A map of NEL², by its neighbourhood areas and ward boundaries, is represented below:



² Source: North East Lincolnshire Council ICT department – MapInfo excerpt. This product includes mapping data licensed from Ordnance Survey © Crown Copyright 2007 Licence number 100020759

Key findings

Choice and flexibility

- NEL has 163 registered childcare settings offering 2,852 places.
- Central neighbourhood has the highest proportion of available childcare places, whilst Immingham has the least.
- By carescheme type, day nurseries offer the highest number of available places covering childcare for babies and children up to the age of 5 years. Provision is also high for out of school clubs, pre-schools and childminding settings.
- Availability of early education for 3 and 4 year olds is highest within Central and Fiveways neighbourhoods, both of which are areas with significant levels of socio-economic deprivation.
- Uptake of early education places is highest in Central and Fiveways, which directly correlates with availability.
- The number of available places per 3 and 4 year old (*penetration rate*) is high with an average of 1.75 places per child across NEL.
- In NEL, 95.3% of potential³ 3 and 4 year olds have taken up an early education place.
- A high proportion of those 3 and 4 year olds taking up a place (96.8%) are taking up their full 15 hour Flexible Free Entitlement (FFE).
- Uptake of FFE for the most disadvantaged 2 year olds in NEL is at 96.1%, as of March 2011.

Availability

- Occupancy of formal childcare places is high in NEL ranging from 81.7% in Wolds to 92.1% in Central. This indicates excellent uptake of childcare although very limited availability of vacant places.
- The majority of providers estimate their occupancy as between 71% and 90% over the past 12 months.
- 12.3% of all childcare settings have chosen not to fill any of their vacancies, the majority of which were childminders.
- The number of children on waiting lists is significantly high in Meridian, when compared to other neighbourhood areas.
- 47.3% of all children on waiting lists were aged 2 years or under.

³ 3 and 4 year olds as depicted by GP registrations: Hull and East Riding Health Informatics Service - Exeter system

Quality

- Findings from 2010/11 end of year reports⁴ indicate that 5.5% of all childcare settings were rated as '*outstanding*' by Ofsted for overall effectiveness in their inspections. 55.5% received a '*good*' rating while 39% gained '*satisfactory*'. There are no '*inadequate*' settings in NEL.
- 6.2% of group based settings achieved '*outstanding*' ratings for overall effectiveness, while 64.6% were '*good*' and 29.2% were '*satisfactory*'.
- 5% of childminders achieved '*outstanding*' ratings for overall effectiveness, while 50% were '*good*' and 45% were '*satisfactory*'.

Affordability

- Latest average childcare costs highlight that hourly costs within day nurseries are lowest in Meridian for all ages and highest in Wolds for children aged 0 – 2 years and Fiveways for children aged 3 years plus.
- Day nursery costs are more expensive for younger children (under 2 years) and get cheaper for 2 year olds and those aged 3 years plus.
- Average pre-school costs were lowest in Fiveways and highest in Central and highest in Meridian (2 years) and Wolds (3 years plus).
- Average out of school club costs were lowest in Central and highest in Fiveways for all children aged 3 years plus.
- Average childminder costs range from an average of £3.45 per hour in Immingham, to £3.97 per hour in Meridian.

⁴ Source: North East Lincolnshire Council, Ofsted Inspection outcomes – End of Year report, 2010/11

1. Supply of childcare

1.1 Early education

Children will be eligible for 15 hours of Early Year's provision each week for a maximum of 38 weeks a year from the start of the term immediately following their third birthday as follows:

Birth date	Eligibility for free Early Education place
1 April – 31 August (inclusive)	Autumn term (from 1 September)
1 September – 31 December (inclusive)	Spring Term (from 1 January)
1 January - 31 March (inclusive)	Summer Term (from 1 April)

From 2012 a stretched availability will come into place, whereby parents, if they wish to, should be able to access the Flexible Free Entitlement (FFE) for 12 hours a week for 47 weeks. 63% of providers within NEL indicated in the full CSA⁵ that they will be able to provide this. The majority of those that indicated that they could not were mainly those settings that opened during term time only.

Table 1.1a: Availability and take-up of 3 and 4 year old early education places, by neighbourhood: Spring term 2012

Neighbourhood	PTE Early Education places available	PTE Early Education places taken up
Central	2,933	1,342
Fiveways	1,443	968
Immingham	547	281
Meridian	1,066	648
Wolds	898	488
NEL total	6,888	3,727

- 6,888 part time equivalent (PTE) early education places were available to 3 and 4 year olds across NEL in Spring 2012.
- 42.6% of all available early education places were in Central, 21% in Fiveways, 15.5% in Meridian, 13% in Wolds and 7.9% in Immingham.
- Of the 6,888 available places, 3,727 places were taken up throughout NEL.
- 1,342 early education places were taken up in Central (36%), 968 in Fiveways (26%), 648 in Meridian (17.4%), 488 in Wolds (13.1%) and 281 in Immingham (7.5%).

⁵ Source: North East Lincolnshire Council, <http://www.nelincs.gov.uk/resident/family-information-and-children-s-centres/looking-for-childcare-/childcare-sufficiency-assessment/>, 2011

- Further analysis highlights that 46.1% of available places were provided by PVI (Private, voluntary and independent) settings; while the remainder were offered within LEA (Local Education Authority) settings.

Table 1.1b: Penetration rate of 3 and 4 year old places: Spring term 2012

Neighbourhood	3 & 4 year old population	Total available places	Total penetration rate
Central	1,458	2,933	2.01
Fiveways	1,092	1,443	1.32
Immingham	308	547	1.78
Meridian	591	1,066	1.80
Wolds	484	898	1.86
NEL total	3,933	6,888	1.75

Table 1.1b gives the population of 3 and 4 year olds, taken from the September 2011 GP registration dataset⁶ and the number of available places within each neighbourhood area. The penetration rate is defined as the number of available early education places per child (aged 3 and 4 years).

- There is an average of 1.75 early education places for every 3 and 4 year old in NEL.
- The highest penetration rate is in Central (2.01 places per child).
- Fiveways has the lowest penetration rate with 1.32 places per child (aged 3 and 4 years).

In Spring each year the Local Authority undertakes an Early Years Census whereby all children taking up an early education place are counted, this is called the headcount. The following tables use this data to estimate take up of places against population and also looks at the percentage of children on the headcount that are taking up their full 15 hours.

Table 1.1c: Percentage of 3 and 4 year olds who have taken up an early education place, by neighbourhood: Spring term 2012

Neighbourhood	3 & 4 year old population	Total children from headcount	Total estimated uptake
Central	1,458	1,355	92.9%
Fiveways	1,092	1,059	97.0%
Immingham	308	277	89.9%
Meridian	591	587	99.3%
Wolds	484	471	97.3%
NEL total	3,933	3,749	95.3%

⁶ Source: Hull and East Riding Health Informatics Service - Exeter system, GP registrations: September 2011

This dataset looks at potential population of 3 and 4 year olds taken from GP registrations at September 2011 and the number of 3 and 4 year olds taking up an early education place.

Table 1.1c depicts the percentage of the 3 and 4 year old population taking up an early education placement in NEL. Please note that uptake is estimated due to limitations of the datasets. In this case, a number of postcodes could not be validated and children were omitted. In addition, there may also be some variance due to the difference in the child population (September 2011) and headcount (Spring 2012) dates.

Where a child appears on the headcount dataset as attending two or more settings, duplicate entries have been removed to provide a more accurate picture of take up for those children accessing their entitlement to free early education.

- In total, 95.3% of 3 and 4 year olds in NEL have taken up an early education place as of Spring term 2012.
- Meridian neighbourhood displays the highest uptake of 99.3%.
- Immingham neighbourhood presents the lowest uptake at 89.9%.

Table 1.1d: Percentage of 3 and 4 year olds taking up their full FFE entitlement, by neighbourhood: Spring term 2012

Neighbourhood	Total children from headcount	Total taking up full 15 hours	Total uptake of full entitlement
Central	1,355	1,314	97.0%
Fiveways	1,059	1,040	98.2%
Immingham	277	272	98.2%
Meridian	587	547	93.2%
Wolds	471	457	97.1%
NEL total	3,749	3,631	96.8%

Table 1.1d depicts the proportion of all children from the 2012 headcount that are taking up their full 15 hour entitlement.

- 96.8% of all 3 and 4 year olds on headcount in NEL are taking up the full entitlement to FFE.
- The highest uptakes were in Immingham and Fiveways, both at 98.2%.
- The lowest uptake is in Meridian, at 93.2%.

1.2 2-year old funding pilot

Poverty has a real impact upon a child's chances of progressing well in the early years and beyond. Only one in five young people from the poorest families achieve five good GCSEs, including English and Maths, compared with three quarters of those from the richest families⁷. Good quality early education, especially from age two upwards, has positive benefits on children's all-round development; however, fewer children from more deprived backgrounds have the opportunity to experience early education at age two⁸.

From September 2009, NEL Council became part of the second wave of local authorities to pilot free nursery education funding (NEF) for 2 year olds. From its initiation, 77 places were made available to the most disadvantaged 2 year olds, subject to qualifying criteria. Of these 77 places, 74 were taken up, marking an uptake rate of 96.1% as of March 2011.

From April 2011, the number of eligible places was extended to 114 places; however, uptake for 2011/12 is not due to be reported until April 2012. From September 2013, the Government have announced that all 2 year olds who are eligible for Free School Meals will be entitled to receive the 2 year old funding. Based on current figures taken from the Department for Education (DfE) website, NEL will be able to offer 600 places⁹.

⁷ Source: Gregg P and Goodman A, *Poorer Children's educational attainment: how important are attitudes and behaviours?*, Joseph Rowntree Foundation (2010).

⁸ Source: Smith, R., Purdon, S., Schneider, V., La Valle, I., Wollny, I., Owen, R. and Bryson, C. (2009) 'Early Education Pilot for Two Year Old Children Evaluation'

⁹ Source: North East Lincolnshire Council, *Integrated Family Services*, December 2011

1.3 Stocks of registered childcare

The total number of childcare places available in all childcare settings across NEL provides additional insight into provision that will enable parents to work, study or take up training. All figures within this section have been taken from the latest childcare stock figures, accurate as of 1st March 2012. The stock of childcare is taken directly from the figures determined by Ofsted inspections (www.ofsted.gov.uk). Please note that where a childcare setting is exempt from registration, figures have been collated through direct contact.

Table 1.3a: Numbers of childcare settings and places, by neighbourhood and carescheme type: March 2011

Neighbourhood	Childminder		Creche		Day Nursery		Out of School Club		Pre-school Playgroup		Total	
	Settings	Places	Settings	Places	Settings	Places	Settings	Places	Settings	Places	Settings	Places
Central	34	172	0	0	11	546	7	204	4	122	56	1,044
Fiveways	18	98	3	57	4	161	2	81	3	83	30	480
Immingham	6	24	0	0	2	128	1	32	0	0	9	184
Meridian	23	129	1	12	4	124	4	112	9	230	41	607
Wolds	15	78	0	0	2	107	6	212	4	140	27	537
NEL total	96	501	4	69	23	1,066	20	641	20	575	163	2,852

- NEL currently has 163 operating childcare settings, offering 2,852 registered childcare places across five different sectors of care.
- Day nurseries offer the largest number of places and the highest place to setting ratio with an average of 46.3 places per setting across NEL.
- The childminding sector has the largest number of settings in NEL at 96 and offering 501 registered childcare places. There is a declining trend for childminders within NEL which follows the national trend where the numbers of childminders have fallen by 18% between 2005 and 2010, as reported in the *2010 Childcare and Early Years Providers Survey*¹⁰.
- Central and Meridian neighbourhoods have the largest numbers of childcare settings and registered places. Immingham has the least available places; however, Immingham neighbourhood contains just one ward and a smaller child population whereas all other neighbourhoods comprise of either 3 or 5 wards.

¹⁰ Source: Department for Education, Richard Brind et al. *Childcare and Early Years Providers Survey 2010*, September 2011.

1.4 Special Educational Needs (SEN) provision

Within NEL, all group based settings and the majority of childminders are fully inclusive and are able to offer childcare for children with special or additional needs. It is pertinent to mention that for childminders, this will depend on the number of children currently attending the setting as they usually work alone. It also may depend on the amount of training that a childminder has received and their confidence in working with children with complex needs.

1.5 Cost of childcare

The tables in this section detail the latest available childcare costs, taken from the Family Information Services (FIS) Tribal database. Please note that careschemes often offer various costing options such as hourly, sessional, daily, weekly and termly. Due to the small number of carescheme types in some areas, the costings have been optimised for each carescheme and a full range of costings has not been provided. Tables 1.5a to 1.5d gives an overview of the costs that a parent may be expected to pay across the various childcare sectors in NEL.

Table 1.5a: Average hourly costs within day nurseries: 2011

Neighbourhood	Under 2's			2 year olds			3 years plus		
	Lowest	Average	Highest	Lowest	Average	Highest	Lowest	Average	Highest
Central	£3.50	£4.53	£4.90	£3.50	£4.36	£4.60	£3.50	£4.36	£4.60
Fiveways	£4.00	£4.45	£4.90	£4.00	£4.30	£4.60	£4.60	£4.60	£4.60
Immingham	£3.40	£4.25	£5.10	£3.40	£4.25	£5.10	£3.10	£4.10	£5.10
Meridian	£3.25	£3.92	£4.30	£3.25	£3.81	£4.00	£3.25	£3.64	£4.00
Wolds	£4.90	£4.90	£4.90	£4.60	£4.60	£4.60	£3.50	£4.05	£4.60
North East Lincolnshire	£3.25	£4.38	£5.10	£3.25	£4.22	£5.10	£3.10	£4.12	£5.10

- Day nursery costs for children under 2 years old range from £3.92 (average) in Meridian to £4.90 in Wolds; while average rates were slightly lower for over 2 year olds, ranging from £3.81 (Meridian) to £4.60 (Wolds). Average costs for children aged 3 and above range from £3.64 in Meridian to £4.60 in Fiveways.
- Average day nursery costs throughout NEL were more expensive for children under 2 years old at £4.38, while it is cheaper for over 2 year olds (£4.22) and 3 years plus (£4.12).

Table 1.5b: Average costs per session within pre-school playgroups: 2011

Neighbourhood	2 year olds			3 years plus		
	Lowest	Average	Highest	Lowest	Average	Highest
Central	£5.40	£7.70	£9.90	£5.40	£7.70	£9.90
Fiveways	£5.00	£6.95	£9.84	£5.00	£6.95	£9.84
Immingham	~	~	~	~	~	~
Meridian	£6.00	£8.13	£10.00	£6.00	£7.89	£10.00
Wolds	£6.00	£8.06	£10.00	£6.00	£8.06	£10.00
North East Lincolnshire	£5.00	£7.84	£10.00	£5.00	£7.74	£10.00

~ There are no pre-schools in Immingham neighbourhood.

Session times within pre-school playgroups range from between 2 ½ and 3 hours. Costs were not inclusive of any additional costs such as lunchtime costs and charges for snacks and meals.

- Average pre-school sessional costs were lowest in Fiveways at £6.95 and highest in Meridian for 2 year olds (£8.13) and Wolds for 3 years plus (£8.06).
- When looking at the range of costs, prices vary from £5.00 per session in Fiveways to £10.00 in Meridian and Wolds.
- Meridian is the only neighbourhood where costs differ by age, falling from £8.13 (average) for 2 year olds to £7.89 (average) for children aged 3 and above.

Table 1.5c: Average sessional costs within out of school clubs: 2011

Neighbourhood	3 years plus		
	Lowest	Average	Highest
Central	£6.00	£7.00	£8.00
Fiveways	£8.50	£9.25	£10.00
Immingham	~	~	~
Meridian	£6.00	£8.25	£10.00
Wolds	£6.50	£7.25	£8.00
North East Lincolnshire	£6.00	£7.58	£10.00

~ Costs not available.

- Average out of school club sessional costs were lowest in Central at £7.00 and highest in Fiveways, at £9.25.
- When looking at the range of costs across NEL, prices vary from £6.00 per session in Central to £10.00 in Fiveways and Meridian.
- Out of school costs will naturally vary due to the various session lengths, which can range from 2 hours to 3 ½ hours.

Table 1.5d: Average hourly costs within childminding: 2011

Neighbourhood	Under 2's			2 year olds		
	Lowest	Average	Highest	Lowest	Average	Highest
Central	£2.50	£3.67	£4.00	£2.50	£3.67	£4.00
Fiveways	£3.25	£3.83	£4.00	£3.25	£3.83	£4.00
Immingham	£3.50	£3.74	£4.00	£3.50	£3.74	£4.00
Meridian	£3.25	£3.97	£4.50	£3.25	£3.97	£4.50
Wolds	£3.00	£3.80	£4.30	£3.00	£3.80	£4.30
North East Lincolnshire	£2.50	£3.80	£4.50	£2.50	£3.80	£4.50

- Average childminder costs do not vary much by area or by age. The most affordable childminders can be found in Central, where costs were an average of £3.67 per hour, while the most expensive area is Meridian where average childcare costs were £3.97 per hour.
- Interestingly, hourly costs vary amongst childminders, from £2.50 in Central to £4.50 in Meridian; however it is relevant to mention that some of these costs may be inclusive of one or more of the following:
 - Meals;
 - Snacks;
 - Drinks;
 - Outings.
- Further analysis of FIS update data highlights that 22.4% of childminders offer age related prices and sibling reductions; while 23.5% of childminders have additional costs on top of their hourly rates for meals, snacks, drinks and outings.

2. Demand for childcare

2.1 FIS childcare enquiries

One of the services FIS provide is as a hub for parents and carers to access a variety of information around childcare. Details of all childcare providers are stored on Tribal, the database system used by FIS. Data in this section represents all childcare enquiries received between 01/04/2010 and 31/03/2011.

Table 2.1a shows the total number of people who have contacted FIS throughout the 2010/11 fiscal year. This will provide a broad overview of childcare demand within NEL and can help determine the geographical areas in which childcare has been requested. Table 2.1b details the total volume of formal childcare requests received by FIS. Please note that there will be an element of duplication involved as each person can enquire about more than one type of childcare across more than one area of NEL.

Table 2.1a: Total number of people who contacted FIS throughout 2010/11, by neighbourhood area and employment status¹¹

Neighbourhood	Employment status			Grand Total
	Employed	Unemployed	Other*	
Central	173	129	58	360
Fiveways	154	87	61	302
Immingham	13	2	12	27
Meridian	104	41	45	190
Wolds	67	25	29	121
North East Lincolnshire	511	284	205	1,000

* Includes 'nil' responses, apprenticeships, placements, those who found employment and those seeking employment.

¹¹ Data analysed using the person's home postcode.

Childcare Sufficiency Assessment: 2011/12 Refresh

- 1,000 individuals contacted FIS throughout 2010/11 regarding formal childcare. Most enquirers live in Central (36%) and Fiveways (30.2%); while only 2.7% of enquiries came from Immingham residents.
- The majority of those who contacted FIS were currently employed, while 28.4% were unemployed (and not seeking employment).
- Further analysis of FIS enquiry data informs that people who were unemployed enquire about childcare. The most common reasons given by respondents are listed below, however there are a number of reasons which have been suppressed due to small numbers:
 - Socialisation (48%)
 - Returning to work (11.8%)
 - Looking for work (8.8%)
 - Getting into the system (FFE) (6.4%)
 - Work (3.5%)

Table 2.1b: Total volume of childcare requests received by FIS¹², by carescheme type: 2010/11

Neighbourhood	Requests for formal childcare	
	Number	Percentage
Central	1,189	34.8%
Fiveways	861	25.2%
Immingham	91	2.7%
Meridian	735	21.5%
Wolds	540	15.8%
Grand Total	3,416	

- A total of 3,416 requests for childcare were taken by FIS throughout 2010/11, predominantly for childcare within Central (34.8%), followed by Fiveways (25.2%), Meridian (21.5%), Wolds (15.8%) and Immingham (2.7%).
- Further analysis of the dataset informs that the most requests were for childminders (31.9%) and day nurseries (30.9%).

NEL's FIS team provide an information service to any parent looking for childcare; however on occasion, some requests for childcare cannot be met. A list of sufficiency issues given by FIS for the 2010/11 reporting year are detailed in Table 2.1c.

¹² Data analysed using the providers' postcode.

Table 2.1c: Reported sufficiency issues with FIS childcare enquiries, by area: 2010/11

Area	Carescheme type	Resolved	Notes
Wolds	Childminder or Out of School Club	No	School drop off
Fiveways	Childminder or Out of School Club	No	School drop off/pick up
Cleethorpes*	Home childcarer	No	No available home carer
Fiveways	Childminder	No	School drop off/pick up

* No postcode was provided so neighbourhood area could not be determined.

There have been four instances where requests for childcare could not be met during 2010/11. We can see that these are mostly centred around school pick ups and drop offs and would require either a childminder or an out of school club to provide this care. Two of these sufficiency issues are from enquirers living in Fiveways, while one is from Wolds. Additional notes from these issues highlight that the needs could not be met for the following reasons:

- Location of school not suitable for available childminders;
- Time not suitable for available childminders;
- Only one provider that could home care but is currently working for a family and therefore had no capacity.

2.2 Occupancy

Measuring occupancy rates within childcare settings is a useful tool to determine availability of places across all areas of NEL.

Table 2.2a: Occupancy of registered childcare, by neighbourhood: 2010/11

Neighbourhood	Occupancy rate
Central	92.1%
Fiveways	82.1%
Immingham	91.3%
Meridian	91.6%
Wolds	81.7%
NEL total	88.8%

- Occupancy is seen to be highest in Central (92.1%), Meridian (91.6%), Immingham (91.3%), Fiveways (82.1%) and Wolds (81.7%).

In conjunction with calculated occupancy rates, childcare settings were also asked to estimate their average occupancy rate for the past 12 months as well as to provide reasons for any low occupancy, shown in Table 2.2b.

Table 2.2b: Estimated occupancy of registered childcare, by neighbourhood: 2010/11

Neighbourhood	Under 30%	31 - 50%	51 - 70%	71 - 90%	91 - 99%	100%
Central	12.9%	16.1%	25.8%	25.8%	9.7%	9.7%
Fiveways	9.1%	18.2%	31.8%	18.2%	18.2%	4.5%
Immingham	14.3%	0.0%	28.6%	42.9%	14.3%	0.0%
Meridian	6.1%	0.0%	18.2%	39.4%	21.2%	15.2%
Wolds	0.0%	20.0%	30.0%	30.0%	20.0%	0.0%
NEL total	8.0%	11.5%	25.7%	30.1%	16.8%	8.0%

- The largest proportion of settings in NEL estimated their occupancy at between 71% – 90%; which corroborates the range of occupancy rates shown in Table 2.2a, which are between 81.7% and 92.1%.

- Of those settings whose estimated occupancy was under 30%, the following reasons were given:
 - Lack of enquiries;
 - Loss of parental employment/unable to afford childcare costs;
 - Newly registered/trying to establish customer base;
 - Prefer to work with smaller ratio's of children;
 - Competition from other settings.

2.3 Vacancies

Responses from the 2011 FIS Update concerning vacant childcare places within NEL are shown in Table 2.3a. Settings were asked why they were choosing not to fill any vacant places, with the responses given below.

Table 2.3a: Summary of childcare settings choosing not to fill vacant places, by neighbourhood: 2010/11

Neighbourhood/Carescheme	Settings choosing not to fill vacancies	
	Number	Percentage
Childminder	5	25.0%
Day nursery	1	5.0%
Central total	6	30.0%
Childminder	4	20.0%
Fiveways total	4	20.0%
Childminder	1	5.0%
Immingham total	1	5.0%
Childminder	2	10.0%
Pre-School Playgroup	1	5.0%
Meridian total	3	15.0%
Childminder	5	25.0%
Out of School Care	1	5.0%
Wolds total	6	30.0%
NEL total	20	

- Of those settings who responded, 20 settings stated that they have chosen not to fill any vacant places.
- The majority of settings choosing not to fill places were childminders.
- There were settings within all neighbourhoods choosing not to fill vacancies; however there were more within Central and Wolds (both 30%), followed by Fiveways (20%), Meridian (15%) and Immingham (5%).

- When asked, settings gave the following reasons to explain their decision:
 - Comfortable with current numbers/capacity;
 - Standard of care would decrease if more children were taken on;
 - Staff maternity leave/illness.

2.4 Waiting lists

Table 2.4a details the volume of children currently on a waiting list to attend a childcare setting within NEL, based on responses from the 2011 FIS Update. Results have been analysed by age groups to ascertain if childcare for certain age groups is over-saturated within certain areas of NEL.

Table 2.4a: Volume of children on a waiting list for childcare in NEL, by neighbourhood: 2010/11

Neighbourhood	Under 2	Age 2	Age 3 - 4	Age 5 - 7	Age 8 - 13	Age 14 - 17	Grand total
Central	38	49	24	1	1	0	113
Fiveways	3	6	2	1	0	0	12
Immingham	10	2	1	0	0	0	13
Meridian	168	111	64	7	1	0	351
Wolds	19	4	1	0	0	0	24
NEL total	238	172	92	9	2	0	513

- There were a total of 513 children on a waiting list for childcare in NEL, according to responses from the 2011 FIS Update.
- Childcare waiting lists within Meridian and Central were noticeably higher than those seen in Fiveways, Immingham and Wolds.
- 97.8% of children on waiting lists in NEL were aged under 5, with 47.3% being age 2 years or under.
- Further analysis showed that 342 children (66.7%) were on a waiting list to attend a pre-school playgroup, 128 (24.9%) for a day nursery, 22 (4.3%) for childminding and 21 (4.1%) for an out of school club.

3. Appendices

3.1 Sources of information

Family Information Service, Riverside Children's Centre, Central Parade, Grimsby, DN34 4HE

Integrated Family Services, Riverside Children's Centre, Central Parade, Grimsby, DN34 4HE

Childcare Quality Improvement Team, Serco, Western Technology Site, Cambridge Road, Grimsby, DN34 5TD

ICT Client Solutions, Cleethorpes Civic Offices, Knoll Street, Cleethorpes, DN35 8LN

North East Lincolnshire Council

www.nelincs.gov.uk

Office of National Statistics

www.statistics.gov.uk

ONS Neighbourhood Statistics

www.neighbourhood.statistics.gov.uk

Hull and East Riding Health Informatics Service

www.eastridingandhullhealth.nhs.uk

Department for Education

www.dfe.gov.uk

Joseph Rowntree Foundation

www.jrf.org.uk

Office for Standards in Education (Ofsted)

www.ofsted.gov.uk

North East Lincolnshire Childcare Sufficiency Assessment 2011/12 Refresh

Prepared by:

Early Years', Children's Centres and Communities,
Commissioning and Business Improvement,
5th Floor Freeman House,
Freeman Way,
Grimsby,
DN32 7AU

Document Reference: *NELC.02.01.34.01*

Title: *Childcare Sufficiency Assessment 2011/12 Refresh*

Author: *Early Years', Children's Centres and Communities*

Published: *April 2012*