



Table of contents

Introduction	3
Key findings	6
Choice and flexibility.....	6
Availability	6
Quality.....	7
Affordability.....	7
1. Supply of childcare	8
1.1 Flexible funding entitlement for two, three and four year olds.....	8
1.1a Two year old funding.....	8
1.1b Free Flexible Entitlement (FFE) for 3 and 4 year olds	9
1.1c FFE data pre-requisites.....	10
1.1d Take-up of early education places	10
1.1e Penetration rate of early education places	12
1.1f Headcount	13
1.2 Stocks of registered childcare	15
1.3 Special educational needs (SEN).....	18
1.4 Cost of childcare	19
1.5 Ethnicity	22
2. Demand for childcare	23
2.1 Occupancy.....	23
2.2 Vacant places	24
2.3 Waiting lists.....	26
3. Appendices	27
3.1 Sources of information	27

Introduction

The Childcare Act (2006) requires North East Lincolnshire (NEL) Council, like all other local authorities in England, to ensure there is sufficient childcare for parents and carers who are working, studying or training. It also highlights the need for local authorities to pay particular attention to the childcare needs of specific target groups, for instance:

- *Low-income families;*
- *Black and minority ethnic families;*
- *Gypsy, Roma and traveller communities;*
- *Families with disabled children or disabled parents;*
- *Families living in rural or inaccessible areas;*
- *Armed Forces families.*

The duties in the act (section 6) require the council to shape and support the development of childcare provision in NEL in order to make it flexible, sustainable and responsive to the needs of the community. This role is described as a 'market management' function, whereby the local authority supports the sector to meet the needs of parents, children and young people, along with other stakeholders.

The council also has a duty to undertake a refresh of the full detailed Childcare Sufficiency Assessment (CSA) on an annual basis; however Section 75 of the Childcare and Families Bill 2012-13 recommends that Section 11 of the Childcare Act 2006 (duty of local authority in England to assess sufficiency of childcare provision) is repealed. This Bill has now reached Royal Assent, and whilst there is currently no responsibility to undertake a full assessment, however we have a requirement to complete an annual refresh to allow the local authority to monitor sufficiency¹.

¹ Source: Childcare and Families Bill 2012/13, Parliament, <http://services.parliament.uk/bills/2012-13/childrenandfamilies.html>

In 2004, the Government published a ‘10-year Strategy for Childcare’², to ensure that every child has the best possible start in life; whilst also providing the option for parents, particularly mothers, to work and progress their careers. The strategy covers four primary categories, which will be referred to within this CSA:

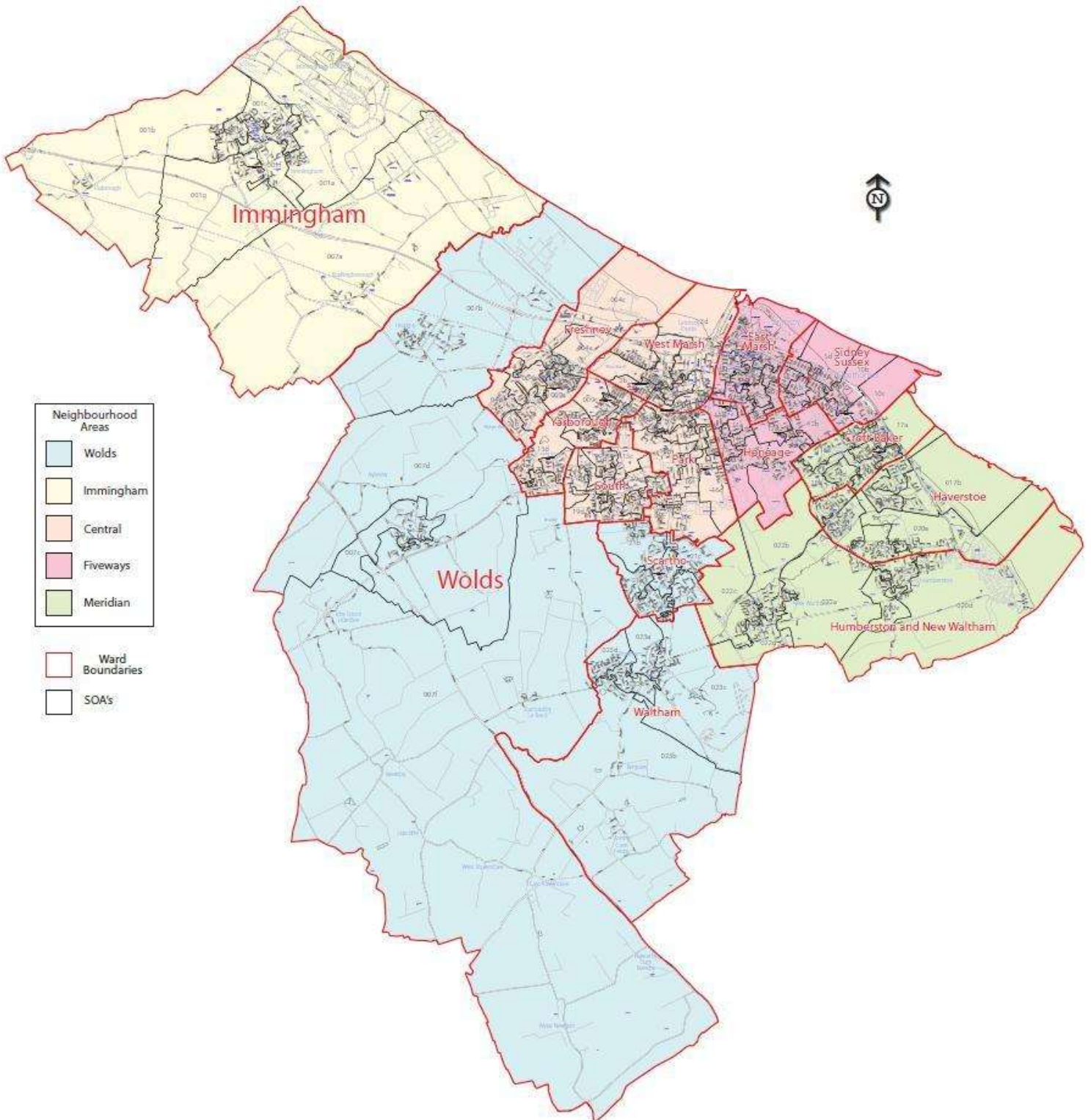
- **Choice and flexibility:** *parents to have greater choice about balancing work and family life;*
- **Availability:** *for all families with children aged up to 14 (17 for disabled children) who need an affordable, flexible, high quality childcare place that meets their circumstances;*
- **Quality:** *high quality provision with a highly skilled childcare and Early Years workforce, among the best in the world;*
- **Affordability:** *families to be able to afford flexible, high quality childcare that is appropriate for their needs.*

For the 2013/14 CSA refresh, analysis has been broken down to a sub-authority level and represented at both electoral ward and neighbourhood level. Details of which neighbourhood each ward sits in is shown below:

Neighbourhood	Electoral ward
Central	Freshney
	Park
	South
	West Marsh
	Yarborough
Fiveways	East Marsh
	Heneage
	Sidney Sussex
Immingham	Immingham
Meridian	Croft Baker
	Haverstoe
	Humberston and New Waltham
Wolds	Scartho
	Waltham
	Wolds

² Source: DfE, *Choice for parents, the best start for children: A ten-year strategy for childcare*, December 2004

A map of NEL³, by its neighbourhood areas and ward boundaries, is represented below:



³ Source: North East Lincolnshire Council ICT department – MapInfo excerpt. This product includes mapping data licensed from Ordnance Survey © Crown Copyright 2007 Licence number 100020759

Key findings

Choice and flexibility

- NEL has 158 registered childcare settings, offering 2,865 childcare places across five sectors of care.
- Central neighbourhood has the highest proportion of available childcare places, whilst Immingham has the least.
- By carescheme type, day nurseries offer the highest number of available places covering childcare for babies and children up to the age of five years. Provision is also high for out of school clubs, pre-schools and childminding settings.
- Availability of funded early education places for two, three and four year olds is highest within Central and Fiveways neighbourhoods, both of which are areas with significant levels of socio-economic deprivation.
- Take-up of early education places is highest in Central and Fiveways, which directly correlates with availability.
- The number of available places has risen by 6.6% since Spring 2013, while take-up has risen by 13.3% from 3,900 fully funded places to 4,420.
- The number of available places per three and four year old (*penetration rate*) is high with an average of 1.73 places per child across NEL, which has increased from the 1.63 places per child highlighted in the 2012/13 refresh.
- In NEL, 98.3% of potential three and four year olds have taken up a funded early education place, which is an increase on the 96.5% reported last year.
- Of the two, three and four year olds recorded on the Spring 2014 headcount, 99% are taking up their full 15 hour entitlement to an early education place, either at one or more settings.
- Take-up during the Spring 2014 term for two year old funded places in NEL stands at 101% this year.

Availability

- As of February 2014, 11 out of 15 wards have at least one immediate vacancy within all available childcare settings.
- 95.5% of out of school clubs had immediate vacancies, compared to pre-schools at 52.6%.
- 510 children were stated as being on a waiting list for a childcare place, which is more than double the number reported last year. Of these, 402 children were on waiting lists at pre-schools.
- Almost half of children reported to be on a waiting list are requesting a place in Croft Baker and Haverstoe wards, with Meridian neighbourhood area having almost 60% of requested places.
- 81.6% of children on waiting lists are aged two or under, which is consistent with pre-school admission ages. This is likely to increase in line with changes to two year old funding

eligibility due in September 2014 and the subsequent increase in available funded places that settings are able to offer.

Quality

- In September 2012 Ofsted changed the way they inspect and rate effectiveness in both Schools and Early Years settings. As of 1st March 2014, 24 settings have been judged under the new criteria.
- Of the 24 inspected, 15 had previous judgements. Of these, 3 (20%) settings managed to improve their rating, 5 (33%) managed to maintain the previous rating while 7 (47%) received a lower rating.
- Taking into account all current standing judgements, 7% of settings are currently judged as 'Outstanding', and 64% as 'Good'. This means in North East Lincolnshire, 71% of settings are currently judged as 'Outstanding' or 'Good'. This is lower than the national average⁴ of 77%.
- There are currently two inadequate settings in NEL, both judged within the last year, under the new judgement criteria.
- In non-domestic childcare settings, (pre-schools, day nurseries and out of school clubs) the number judged either 'Outstanding' or 'Good' is higher, at 75%.
- 3% of childminders are currently judged to be 'Outstanding', which marks a large drop from the 2011/12 Ofsted end of year report⁵, where the number of 'Outstanding' childminders in NEL stood at 9.3%.

Affordability

- Average weekly costs within day nurseries in North East Lincolnshire are £110.31 for under 2's and £104.45 for over 2's.
- Average weekly costs for childminders in North East Lincolnshire are £94.64 for under 2's and £94.58 for over 2's.
- The average weekly cost within after school clubs in North East Lincolnshire is £50.76 for a 15 hour week.
- The vast majority of North East Lincolnshire childminders make no pricing differentiation between under 2's and over 2's.
- Average setting costs were more than the regional average for day nurseries, childminders and after school clubs, day nurseries and childminders were less than the England average.

⁴ Source: Ofsted data view – www.dataview.ofsted.gov.uk (ratings as of 31/08/13)

⁵ Source: North East Lincolnshire Council, Ofsted Inspection outcomes – End of Year report, 2011/12

1. **Supply of childcare**

1.1 **Flexible funding entitlement for two, three and four year olds**

Poverty has a real impact upon a child's chances of progressing well in the early years and beyond. Only one in five young people from the poorest families achieve five good GCSEs, including English and Maths, compared with three quarters of those from the richest families⁶. Good quality early education, especially from age two upwards, has positive benefits on children's all-round development; however, fewer children from more deprived backgrounds have the opportunity to experience early education at age two⁷.

1.1a **Two year old funding**

As a family, you must be claiming one or more of the following benefits to be eligible for free school meals and the two year old funding.

- Income Support;
- Income based Jobseekers Allowance;
- Income related Employment and Support Allowance;
- Support under section VI of the Immigration and Asylum Act 1999;
- The guarantee element of state pension credit;
- Child tax credit, providing you are not entitled to working tax credit and have an annual income (as assessed by HM Revenue & Customers) or that does not exceed £16,190;

Or

- If your child is looked after by the Local Authority;
- If your child is accessing the Early Years Support Pathway.

If a two year old child is eligible they can access 15 hours per week for 38 weeks per year. The childcare can be taken over a minimum of two days and no session can be longer than ten hours a day or shorter than two and a half hours a day. No sessions to be before 7am or after 7pm, funding can be split between a maximum of two providers and a child is eligible to start the term after their second birthday until the term after their third birthday.

⁶ Source: *Gregg P and Goodman A, Poorer Children's educational attainment: how important are attitudes and behaviours?, Joseph Rowntree Foundation (2010).*

⁷ Source: *Smith, R., Purdon, S., Schneider, V., La Valle, I., Wollny, I., Owen, R. and Bryson, C. (2009) 'Early Education Pilot for Two Year Old Children Evaluation'*

Two year old eligibility will change again in September 2014, where funding will be offered to 40% of all two year olds in NEL. As well as the current rules, a child will then also be eligible if any of the following apply⁸:

- The parent(s) get Working Tax Credits and earn no more than £16,190 a year;
- The child has a current statement of special educational needs (SEN) or an education, health and care plan;
- The child is in receipt of Disability Living Allowance; or
- The child has left care through special guardianship or an adoption or residence order.

For the Autumn 2013 and Spring 2014 terms, the Department for Education (DfE) has provided funding for 450 two year old places in NEL, based on current eligibility criteria. Spring headcount data shows that 455 two year olds are taking up their full 15 hour entitlement which equates to 101% take-up. It is predicted for Autumn term that the take-up will be around 80%. NEL's Family Information Service (FIS) will be promoting free places for eligible two year olds during the summer.

In line with the planned change to eligibility criteria, this is to increase to 716 places for the Summer 2014 term and 1,154 places to cover the Autumn 2014 and Spring 2015 terms.

1.1b Free Flexible Entitlement (FFE) for 3 and 4 year olds

The term after a child's third birthday they are entitled to 15 hours of free early years provision per week during term time.

Provision is available from a registered provider which can be either:

- Group based childcare;
- Independent school;
- Children's Centre where day care is available;
- Accredited home based childcare such as an accredited childminder;
- Nursery unit/class in school/school nursery.

You may claim your child's early years provision from a maximum of two providers. Not every provider in North East Lincolnshire is registered to offer the flexible free entitlement. To be eligible, providers of childcare must register with North East Lincolnshire Council's Early Years and Childcare service and be registered with Ofsted.

From 2012 a stretched availability will come into place, whereby parents, if they wish to, should be able to access FFE for 12 hours a week over 47 weeks. When asked, 63% of providers within NEL

⁸ Source: Gov.UK, Free Early Education, <https://www.gov.uk/free-early-education>

indicated in the full CSA⁹ that they will be able to provide this. Those that indicated that they could not provide a stretched availability were mainly those settings that opened during term time only.

1.1c FFE data pre-requisites

- Ward and neighbourhood level analysis of child headcount data is taken from the child's home postcode, not the postcode of the provision where they are attending childcare.
- Take-up is estimated due to the limitations of the datasets. Within the headcount data, a number of postcodes could not be validated and therefore these children were omitted from this analysis.
- There may be some variance in pupil numbers due to the time between the collection of child population (September 2013) and headcount (Spring 2014).
- Whilst a child's entitlement can be taken across more than one provider, any duplicate entries have been removed. This is to show the actual number of children on the headcount, and provides an accurate reflection of attendance at more than one provision.
- Child population (ages two to four) has been taken from SystemOne (Primary NHS clinical computer system), rather than from GP registration data (Exeter system), as in previous years.

1.1d Take-up of early education places

Table 1.1a summarises the take-up of early education places, where a full time place is equal to 15 hours. Where a child has taken their entitlement across more than one setting, the total time taken has been used.

The total number of FFE places available is also shown, where places are taken from the number of Ofsted registered places for all FFE registered Early Years settings, and from a nursery provision list, which provides the number of early admission, reception and nursery places within FFE registered primary schools, academies, independent schools and special schools.

⁹ Source: North East Lincolnshire Council, <http://www.nelincs.gov.uk/resident/family-information-and-children-s-centres/looking-for-childcare-/childcare-sufficiency-assessment/,2011>

Table 1.1a: Availability and take up of two, three and four year old early education places: Spring term 2014

Locality	Total take-up	Total FFE places
Freshney	266	440
Park	364	804
South	409	777
West Marsh	372	482
Yarborough	300	599
Central total	1,711	3,102
East Marsh	316	333
Heneage	463	491
Sidney Sussex	427	479
Fiveways total	1,206	1,303
Immingham	326	563
Immingham total	326	563
Croft Baker	269	343
Haverstoe	188	256
Humberston and New Waltham	232	478
Meridian total	690	1,077
Scartho	232	415
Waltham	134	204
Wolds	122	206
Wolds total	488	825
North East Lincolnshire total	4,420	6,870

- In Spring 2014, there were 6,870 early education places available to two, three and four year olds, which marks a 6.6% increase on the 6,442 available in Spring 2013.
- At a neighbourhood level, 45.2% of all early education places were available in Central, 19% in Fiveways, 15.7% in Meridian, 12% in Wolds and 8.2% in Immingham.
- At ward level, Park, South and Yarborough wards have the largest number of places available, with 804, 777 and 599 respectively.
- Of the 6,870 available places, 4,420 fully funded places were taken up throughout NEL. Take-up has increased by 13.3% on the 3,900 places reported in Spring 2013.
- 1,711 early education places were taken up in Central (38.7%), 1,206 in Fiveways (27.3%), 690 in Meridian (15.6%), 488 in Wolds (11%) and 326 in Immingham (7.4%).
- Further analysis highlights that 51.7% of available places were provided by PVI (Private, voluntary and independent) settings; while the remainder were offered within LEA (Local Education Authority) settings.

1.1e Penetration rate of early education places

Table 1.1b gives the population of three and four year olds, taken in September 2013 from SystemOne and the number of available FFE places. The penetration rate is defined as the number of available early education places per child (aged three and four years).

Table 1.1b: Penetration rate of three and four year old early education places: Spring term 2014

Locality	Total population	Total FFE places	Penetration rate
Freshney	208	440	2.12
Park	273	804	2.95
South	441	777	1.76
West Marsh	267	482	1.81
Yarborough	304	599	1.97
Central total	1,493	3,102	2.08
East Marsh	358	333	0.93
Heneage	365	491	1.35
Sidney Sussex	367	479	1.31
Fiveways total	1,090	1,303	1.20
Immingham	293	563	1.92
Immingham total	293	563	1.92
Croft Baker	271	343	1.27
Haverstoe	165	256	1.55
Humberston and New Waltham	160	478	2.99
Meridian total	596	1,077	1.81
Scartho	214	415	1.94
Waltham	131	204	1.56
Wolds	150	206	1.37
Wolds total	495	825	1.67
North East Lincolnshire total	3,967	6,870	1.73

- From Spring term 2014, the penetration rate of early education places available for every three and four year old in NEL was 1.73 places per child. This is an increase on the 1.63 rate reported in Spring 2013.
- Penetration rates at neighbourhood level range between 2.08 in Central and 1.20 in Immingham.
- At ward level, there is significant disparity in the rates, which range from 0.93 in East Marsh to 2.99 in Humberston and New Waltham.
- The penetration rate of 0.93 in East Marsh highlights under provision of available FFE for three and four year olds in this heavily deprived ward.
- Compared to Spring 2013, there has been an increase in FFE availability at neighbourhood level with Central rising from 1.87 to 2.08 and Immingham rising from 1.61 to 1.92. At ward level, availability in Park has risen from 2.43 to 2.95. Availability in Haverstoe has decreased from 1.89 places per child in 2013 to 1.55 this year.

1.1f Headcount

In Spring each year the Local Authority undertakes an Early Years Census whereby all children taking up an early education place are counted, this is called the headcount. The following tables use this data to estimate take-up of places against population and also looks at the percentage of children on the headcount that are taking up their full 15 hour entitlement.

Table 1.1c estimates the percentage of the three and four year old population taking up an early education placement in NEL, based on the known population and the number of children who are registered for a funded early education place.

Table 1.1c: Estimated take-up of three and four year old early education places: Spring term 2014

Locality	Children on headcount	Eligible population	Estimated take-up
Freshney	208	208	100.0%
Park	264	273	96.7%
South	452	441	102.5%
West Marsh	249	267	93.3%
Yarborough	320	304	105.3%
Central total	1,493	1,493	100.0%
East Marsh	352	358	98.3%
Heneage	350	365	95.9%
Sidney Sussex	373	367	101.6%
Fiveways total	1,075	1,090	98.6%
Immingham	272	293	92.8%
Immingham total	272	293	92.8%
Croft Baker	267	271	98.5%
Haverstoe	157	165	95.2%
Humberston and New Waltham	149	160	93.1%
Meridian total	573	596	96.1%
Scartho	235	214	109.8%
Waltham	124	131	94.7%
Wolds	128	150	85.3%
Wolds total	487	495	98.4%
North East Lincolnshire total	3,900	3,967	98.3%

- In total 98.3% of all three and four year olds have taken up an early education place as of Spring term 2014 which marks a 1.8% increase on the 96.5% reported last year.
- Central neighbourhood has 100% estimated take-up of their three and four year olds. Estimated take-up across Meridian and Immingham are nominally lower at 96.1% and 92.8% and are below the total take-up for NEL.
- At ward level, 5 areas have achieved a take-up rate of 100% or higher, the highest being Scartho with 109.8% take-up. Wolds ward has the lowest take-up of their three and four year olds, at 85.3%; however no judgement can be made in this regard as parents often

choose childcare close to where they work and this may not necessarily be in the area where they live.

Table 1.1d looks at the proportion of children aged two, three and four, taken from the Spring 2014 headcount data who are taking up their full 15 hour entitlement to free early years provision.

Table 1.1d: Summary of two, three and four year olds taking up their full FFE entitlement: Spring term 2014

Locality	Children on headcount	Children taking up full 15 hour entitlement	Estimated take-up
Freshney	225	224	99.6%
Park	288	284	98.6%
South	518	510	98.5%
West Marsh	293	291	99.3%
Yarborough	348	343	98.6%
Central total	1,672	1,652	98.8%
East Marsh	425	424	99.8%
Heneage	394	391	99.2%
Sidney Sussex	429	428	99.8%
Fiveways total	1,248	1,243	99.6%
Immingham	315	312	99.0%
Immingham total	315	312	99.0%
Croft Baker	301	298	99.0%
Haverstoe	164	161	98.2%
Humberston and New Waltham	154	149	96.8%
Meridian total	619	608	98.2%
Scartho	249	247	99.2%
Waltham	129	128	99.2%
Wolds	131	127	96.9%
Wolds total	509	503	98.8%
North East Lincolnshire total	4,363	4,318	99.0%

- In total, 99% of all two, three and four year olds in NEL are taking up the full 15 hour entitlement to FFE. Further interrogation of the data highlights that 98.3% of 2 year olds in NEL are taking their full entitlement, and 99% of three and four year olds are taking the full 15 hours.
- The highest take up at neighbourhood level is within Fiveways (99.6%), while it is lowest in Meridian (98.2%).
- Both East Marsh and Sidney Sussex wards have almost complete take-up of FFE (99.8%) from all children on the headcount residing in these areas.
- Humberston and New Waltham and Wolds report the lowest take-up, with 96.8% and 96.9% of children taking up their full FFE entitlement of 15 hours.
- When comparing the improvement in three and four year old take-up since 2012/13, take-up in Wolds ward has seen a 16.6% increase from 81% last year to 97.7% this year.

1.2 Stocks of registered childcare

The maximum number of childcare places that can be made available in all childcare settings across NEL provides additional insight into provision that will enable parents to work, study or take up training. All figures within this section have been taken from the latest childcare stock figures, and are accurate as of 1st March 2014. The stock of childcare is taken directly from the figures determined by Ofsted inspections (www.ofsted.gov.uk). Please note that where a childcare setting is exempt from registration, figures have been collated through direct contact.

Table 1.2a: Numbers of childcare settings, by carescheme type: March 2013

Locality	Childminder	Day Nursery	Pre-school Playgroup	Out of School Club	Creché	Total
Freshney	11	1	0	1	0	13
Park	6	5	2	3	0	16
South	6	3	0	0	0	9
West Marsh	2	1	2	2	0	7
Yarborough	4	2	1	1	0	8
Central total	29	12	5	7	0	53
East Marsh	1	2	1	0	2	6
Heneage	11	1	2	0	0	14
Sidney Sussex	10	1	0	2	0	13
Fiveways total	22	4	3	2	2	33
Immingham	7	3	0	1	0	11
Immingham total	7	3	0	1	0	11
Croft Baker	10	1	3	1	1	16
Haverstoe	6	1	2	1	0	10
Humberston and New Waltham	4	2	4	2	0	12
Meridian total	20	4	9	4	1	38
Scarho	4	1	0	2	0	7
Waltham	2	0	1	2	0	5
Wolds	7	1	1	2	0	11
Wolds total	13	2	2	6	0	23
North East Lincolnshire total	91	25	19	20	3	158

Table 1.2b: Numbers of registered childcare places, by carescheme type: March 2013

Locality	Childminder	Day Nursery	Pre-school Playgroup	Out of School Club	Creché	Total
Freshney	59	42	0	24	0	125
Park	32	232	58	108	0	430
South	34	145	0	0	0	179
West Marsh	10	50	48	48	0	156
Yarborough	29	131	24	24	0	208
Central total	164	600	130	204	0	1,098
East Marsh	6	47	35	0	31	119
Heneage	60	44	48	0	0	152
Sidney Sussex	52	54	0	81	0	187
Fiveways total	118	145	83	81	31	458
Immingham	31	152	0	32	0	215
Immingham total	31	152	0	32	0	215
Croft Baker	55	39	64	38	12	208
Haverstoe	35	41	48	26	0	150
Humberston and New Waltham	23	51	118	48	0	240
Meridian total	113	131	230	112	12	598
Scarho	20	77	0	50	0	147
Waltham	11	0	82	106	0	199
Wolds	38	30	26	56	0	150
Wolds total	69	107	108	212	0	496
North East Lincolnshire total	495	1,135	551	641	43	2,865

- NEL currently has 158 operating childcare settings, offering 2,865 registered childcare places across five different sectors of care.
- Day nurseries offer the largest number of places and the highest place to setting ratio with an average of 45.4 places per setting across NEL.
- The childminding sector has the largest number of settings in NEL at 91 with 495 registered childcare places on offer. There has been a net loss of 2 childminding settings between April 2013 and March 2014, which joins a general picture of decline, as seen between 2006-2011 in the *2011 Childcare and Early Years Providers Survey*¹⁰.
- Central neighbourhood has the highest proportion of both childcare settings and available childcare places, whilst Immingham has the fewest.
- Currently there is no out-of school club provision in South, East Marsh or Heneage ward, or day nursery provision in Waltham ward.
- Park ward has the highest availability of places (430) followed by Humberston and New Waltham (240) and Immingham (215).

¹⁰ Source: Department for Education, Richard Brind et al. *Childcare and Early Years Providers Survey 2011*, September 2012.

1.3 Special educational needs (SEN)

In addition to providing FFE availability, the school headcount also gives some insight into the special educational needs of children aged three and four years old on roll, as summarised in Table 1.3a. Please note that those children who live out of area or whose address is not known on Census day (16th January 2014), have been omitted from this analysis

School action (SA) is used when there is evidence that a child is not making progress at school and there is a need for action to be taken to meet learning difficulties. School action plus (SA+) is used where SA has not been able to help the child make adequate progress. At SA+ the school will seek external advice from the LEA's support services, the local Health Authority or from Social Services¹¹.

A Statement is a document which sets out a child's SEN and any additional help that the child should receive. The aim of the Statement is to make sure that the child gets the right support to enable them to make progress in school¹².

Table 1.3a: Summary of children on headcount with special educational needs: Spring 2014

Locality	School action	School action plus	Statement of SEN
Freshney	0.0%	2.7%	5.4%
Park	1.4%	3.5%	2.1%
South	0.0%	2.2%	0.7%
West Marsh	3.9%	10.7%	0.0%
Yarborough	4.0%	2.4%	0.8%
Central total	2.0%	4.2%	1.3%
East Marsh	4.7%	3.9%	1.6%
Heneage	3.1%	2.5%	2.5%
Sidney Sussex	0.9%	15.5%	2.7%
Fiveways total	3.0%	6.5%	2.3%
Immingham	1.4%	0.0%	5.6%
Immingham total	1.4%	0.0%	5.6%
Croft Baker	1.9%	6.2%	1.2%
Haverstoe	0.8%	1.7%	1.7%
Humberston and New Waltham	1.1%	0.0%	0.0%
Meridian total	1.3%	3.2%	1.1%
Scarho	0.0%	0.0%	3.7%
Waltham	1.2%	0.0%	0.0%
Wolds	0.0%	4.8%	0.0%
Wolds total	0.5%	1.8%	0.9%
North East Lincolnshire total	1.9%	4.0%	1.6%

¹¹ Source: <http://www.specialeducationalneeds.co.uk/UsefullInformation/SEN-EducationInfo/SchoolAction.html>

¹² Source: <http://www.specialeducationalneeds.co.uk/UsefullInformation/SEN-EducationInfo/statementofSEN.html>

- Based on the Spring 2014 headcount, 7.5% of children were reported to be receiving some level of SEN support, 4% of which have been identified at the SA+ stage.
- At neighbourhood level, Fiveways and Central have the highest proportion of pupils receiving support for SEN, with 11.8% and 7.5% of pupils respectively.
- At ward level, Sidney Sussex has the highest proportion of children with SEN, at 19.1%, which is considerably high
- Year on year there has been a proportional increase in children with a statement of SEN, rising from a reported 0.2% in NEL in Spring 2013 to 1.6% in Spring 2014.

1.4 Cost of childcare

The tables in this section detail the latest available childcare costs, taken from the FIS Tribal database. Average costs for Yorkshire & Humber and England have been taken from the 2014 Childcare Costs Survey. Local authorities were asked to provide costs for 25 hours and 50 hours of childcare, provided by nurseries or childminders. The former figure – 25 hours – is the typical amount of childcare that a parent who works part-time might purchase, or a parent in full-time employment who purchases an extra 25 hours childcare on top of the 15 free hours of early years' provision available in England. We also asked for the average price for 15 hours childcare in an after-school club and for childminders who pick up children from school¹³.

All local costs are taken from the 2013 FIS Update and have been calculated using the same methodology used by the Family and Childcare Trust, to enable a consistent comparison. Please note that where sessional or weekly costs are the only available, these values have been disaggregated into the smallest possible unit (hourly), so that it is easier to calculate a 25 or 15 hour week.

¹³ Source: Family and Childcare Trust, <http://www.familyandchildcaretrust.org/>

Childcare Sufficiency Assessment | 2013/14 refresh

Table 1.4a: Average weekly childcare costs within North East Lincolnshire, by ward, neighbourhood and compared against regional and national average: 2012/13

Locality	Day nursery (25 hour week)		Childminder (25 hour week)		After school club (15 hour week)
	Under 2's	Over 2's	Under 2's	Over 2's	
Freshney	n/a	n/a	£95.63	£95.00	£39.00
Park	£93.65	£90.10	£98.39	£98.39	£51.80
South	£118.58	£115.17	£92.06	£92.06	n/a
West Marsh	£112.50	£112.50	£87.50	£87.50	£42.75
Yarborough	£118.75	£115.00	£91.67	£91.67	£59.25
Central average	£106.73	£103.50	£94.20	£94.01	£49.80
East Marsh	£96.25	£96.25	£87.50	£87.50	£30.00
Heneage	£125.00	£117.50	£91.88	£91.88	n/a
Sidney Sussex	£100.00	£97.50	£87.73	£87.73	£52.50
Fiveways average	£104.38	£101.88	£89.79	£89.79	£41.25
Immingham	£137.42	£124.83	£94.69	£94.69	£60.00
Immingham average	£137.42	£124.83	£94.69	£94.69	£60.00
Croft Baker	£108.75	£103.75	£97.27	£97.27	£45.00
Haverstoe	£107.50	£100.00	£101.04	£101.04	£67.80
Humberston and New Waltham	£93.75	£87.50	£100.00	£100.00	£46.50
Meridian average	£100.94	£94.69	£98.87	£98.87	£51.45
Scartho	£127.50	£120.00	£95.00	£95.00	£65.03
Waltham	n/a	n/a	£88.89	£88.89	£45.60
Wolds	£112.50	£87.50	£101.72	£101.72	£49.60
Wolds average	£120.00	£103.75	£97.21	£97.21	£52.86
North East Lincolnshire average	£110.31	£104.45	£94.64	£94.58	£50.76
North East Lincolnshire lowest	£87.50	£84.50	£65.00	£65.00	£30.00
North East Lincolnshire highest	£175.00	£175.00	£150.00	£150.00	£72.00
Yorkshire & Humber average*	£94.03	£87.94	£90.68	£90.75	£44.84
England average*	£110.95	£106.19	£100.74	£101.51	£48.40

Day nursery

- Average weekly costs within day nurseries in North East Lincolnshire are £110.31 for under 2's and £104.45 for over 2's.
- At ward level, average weekly day nursery costs are highest in Immingham (£137.42/£124.83), Scartho (£127.50/£120.00) and Heneage (£125/£117.50). The lowest costs can be seen in Humberston & New Waltham (£93.75/£87.50) and Park (£93.65/£90.10).
- At neighbourhood level, average day nursery costs are comparable in Central, Fiveways and Meridian, while average rates are higher in Wolds and Immingham, particularly for under 2's.
- When compared against the regional and national day nursery average costs, North East Lincolnshire has higher costs than Yorkshire and Humber (£94.03) yet lower than the national average of £110.95.

Childminder

- Average weekly costs for childminders in North East Lincolnshire are £94.64 for under 2's and £94.58 for over 2's.
- The vast majority of North East Lincolnshire childminders make no pricing differentiation between under 2's and over 2's. The only ward where pricing differs is Freshney (£95.63 for under 2's and £95.00 for over 2's).
- Equivalent childminder provision is less expensive on average in most wards except Park and Humberston and New Waltham wards, where day nursery provision is on average cheaper. Equivalent day nursery provision is also on average cheaper for over 2's in Wolds ward.
- When compared against the regional and national childminder average costs, North East Lincolnshire has higher costs than Yorkshire and Humber (£90.68 /£90.75) yet lower than the national averages (£100.74 /£101.51).

After school club

- The average weekly cost within after school clubs in NEL is £50.76 for a 15 hour week.
- At ward level, costs are lowest in East Marsh (£30.00) and highest in Haverstoe Ward (£67.80).
- When compared against the regional and national average costs, North East Lincolnshire has higher average costs than both Yorkshire and Humber (£44.84) and the national average (£48.40).

1.5 Ethnicity

Table 1.5a provides a summary of the ethnic background of children aged two, three and four years old on roll, taken from the Spring 2014 headcount. For the benefit of this analysis, the category of Black and Minority Ethnic (BME) encompasses all ethnic groups that are not White British. Please note that to provide a more accurate analysis, records where ethnicity is not known or obtained have been omitted from these results, thus providing an ethnicity split for those pupils whose ethnicity is known.

Table 1.5a: Summary of children on headcount, by ethnic group: Spring 2013

Locality	White British	BME
Freshney	94.6%	5.4%
Park	86.2%	13.8%
South	98.4%	1.6%
West Marsh	91.1%	8.9%
Yarborough	94.3%	5.7%
Central total	92.6%	7.4%
East Marsh	96.1%	3.9%
Heneage	91.5%	8.5%
Sidney Sussex	95.2%	4.8%
Fiveways total	94.0%	6.0%
Immingham	97.2%	2.8%
Immingham total	97.2%	2.8%
Croft Baker	91.7%	8.3%
Haverstoe	98.3%	1.7%
Humberston and New Waltham	87.0%	13.0%
Meridian total	92.6%	7.4%
Scartho	88.5%	11.5%
Waltham	89.0%	11.0%
Wolds	92.9%	7.1%
Wolds total	90.4%	9.6%
North East Lincolnshire total	92.8%	7.2%

- From the Spring 2014 headcount, 7.1% of all pupils whose ethnicity is known are from a BME background, which is down 0.5% on the 7.6% reported in the Spring 2013 headcount.
- Data from the 2011 Census indicates that in NEL, 4.6% of the entire population is classed as BME¹⁴.
- There are pockets within NEL that show a higher child BME population, in particular Park (13.8%), Humberston & New Waltham (13%) and Scartho (11.5%).
- These figures will show variance from 2011 Census data due to the much smaller sample of the population used.

¹⁴ Source: North East Lincolnshire Informed, Population – Census: Ethnicity (Census 2001 and 2011), <http://www.nelincsdata.net/IAS/>

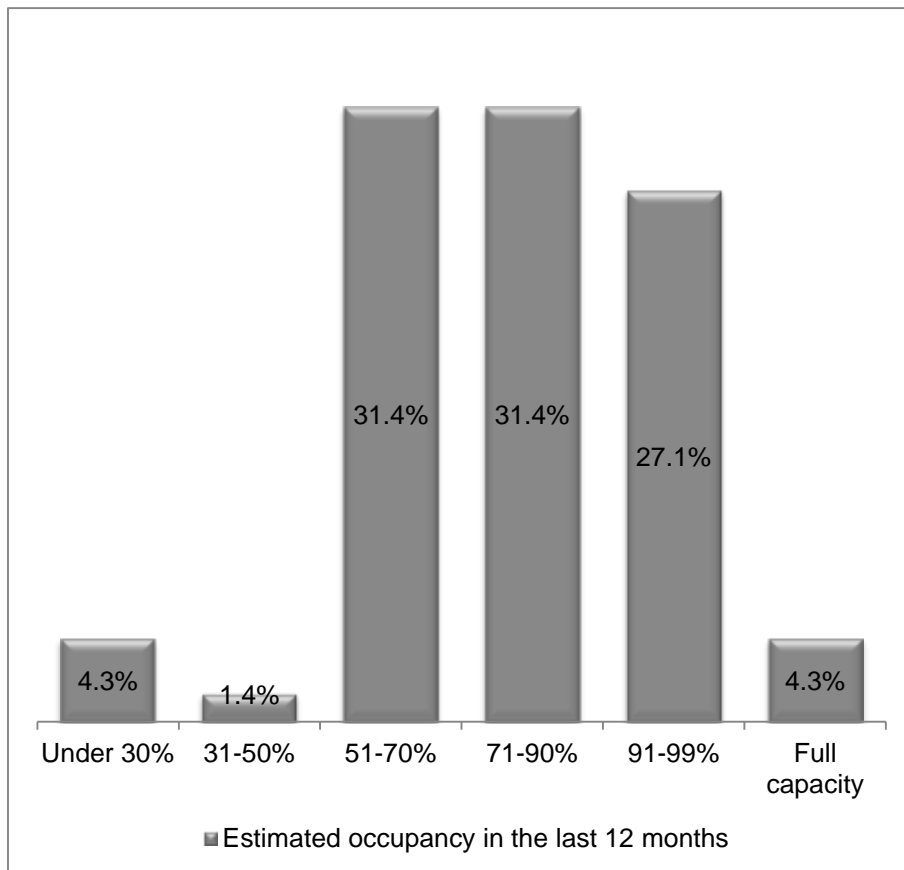
2. Demand for childcare

2.1 Occupancy rates

Table 2.1a details estimated occupancy rates, or how full a setting is on a daily/weekly basis. Within the 2013 FIS update, all providers were asked to estimate their average occupancy rate over the past 12 months. Occupancy within Early Years provision can vary both throughout the year, and on a weekly basis, therefore this data should be treated as a snapshot of the total picture across the local authority as a whole.

The percentages below only reflect those providers who responded to the survey.

Figure 2.1a: Estimated occupancy levels within all Early Years provision in NEL: 2012/13



- Of the settings which responded, the majority estimated that they were operating to either 51-70% or 71-90% capacity over the previous 12 months.
- Less than 6% of settings are under 50% occupied.
- The settings stating they were under 50% occupied were all childminders. Half of these stated they had chosen to have low occupancy, other cited a lack of enquires or that they were newly registered childminder.
- Most of the settings full occupancy over the past 12 months were pre-schools.
- No holiday schemes recorded being more than 51-70% full.
- 91-99% occupancy was reported equally between day nurseries and pre-schools.

2.2 Vacant places

The Early Year's database, Tribal, used by FIS collects information on all childcare providers. Please note that as Tribal is not a live database, the details presented here are a snapshot and accurate as of February 2014.

Table 2.2a shows that as of February 2014, 11 out of 15 wards have at least one immediate vacancy within all available childcare settings. Overall figures for North East Lincolnshire show that out of school clubs have the highest proportion of immediate vacancies (95.5%), followed by day nurseries (80%), childminders (64%) and pre-school playgroups (52.6%).

Table 2.2a: Proportion of childcare settings in North East Lincolnshire that have immediate vacancies as of February 2014

Locality	Day nursery		Pre-school Playgroup		Out of School Club		Childminder	
	Number of settings	Immediate vacancies	Number of settings	Immediate vacancies	Number of settings	Immediate vacancies	Number of settings	Immediate vacancies
Freshney	0	0.0%	0	0.0%	1	100.0%	10	100.0%
Park	4	75.0%	2	50.0%	3	100.0%	7	71.4%
South	2	100.0%	0	0.0%	0	0.0%	7	28.6%
West Marsh	1	100.0%	2	100.0%	2	100.0%	2	0.0%
Yarborough	1	100.0%	1	0.0%	2	100.0%	6	50.0%
Central total	8	87.5%	5	60.0%	8	100.0%	32	62.5%
East Marsh	2	100.0%	1	100.0%	1	100.0%	1	100.0%
Heneage	1	100.0%	2	50.0%	0	0.0%	12	58.3%
Sidney Sussex	1	0.0%	0	0.0%	1	0.0%	10	70.0%
Fiveways total	4	75.0%	3	66.7%	2	50.0%	23	65.2%
Immingham	2	100.0%	0	0.0%	1	100.0%	8	62.5%
Immingham total	2	100.0%	0	0.0%	1	100.0%	8	62.5%
Croft Baker	1	100.0%	3	33.3%	1	100.0%	11	63.6%
Haverstoe	1	100.0%	2	50.0%	1	100.0%	6	50.0%
Humberston and New Waltham	2	50.0%	4	50.0%	2	100.0%	4	75.0%
Meridian total	4	75.0%	9	44.4%	4	100.0%	21	61.9%
Scartho	1	100.0%	0	0.0%	2	100.0%	5	60.0%
Waltham	0	0.0%	1	100.0%	2	100.0%	3	100.0%
Wolds	1	0.0%	1	0.0%	3	100.0%	8	62.5%
Wolds total	2	50.0%	2	50.0%	7	100.0%	16	68.8%
North East Lincolnshire total	20	80.0%	19	52.6%	22	95.5%	100	64.0%

The high proportion of immediate vacancies seen highlights that the majority of settings are not operating at full capacity.

Where places were intentionally not filled, reasons given typically reflected a desire to give more personalised care, or that taking older children too and from school limited capacity. The majority of providers stating they intentionally did not fill places were childminders. A selection of these comments is represented below:

- *“We like to have small number so we can do trips.”*
- *“I have enough work and am very busy. Children would suffer if i took on more.”*
- *“We can give children more quality time.”*
- *“Wrap around children and school runs make it difficult.”*
- *“Drop offs are too time consuming.”*

2.3 Waiting lists

Table 2.3a details the volume of children currently on a waiting list to attend a childcare setting within NEL, based on responses from the 2013 FIS update. Results have been analysed by age groups to ascertain if childcare for certain age groups is over-saturated within certain areas of NEL.

Table 2.3a: Ward distribution of children stated as being on a waiting list for childcare in NEL: 2012/13

Locality	Under 2	2 Years	3 Years	4 Years	Overall
Freshney	0.0%	0.0%	0.0%	0.0%	0.0%
Park	5.1%	5.1%	0.4%	0.0%	10.6%
South	0.0%	0.8%	0.6%	0.0%	1.4%
West Marsh	5.3%	2.4%	0.4%	0.8%	8.8%
Yarborough	1.4%	0.6%	0.8%	0.0%	2.7%
Central total	11.8%	8.8%	2.2%	0.8%	23.5%
East Marsh	0.0%	0.6%	0.0%	0.0%	0.6%
Heneage	2.7%	6.7%	2.2%	0.0%	11.6%
Sidney Sussex	0.0%	1.4%	0.0%	0.0%	1.4%
Fiveways total	2.7%	8.6%	2.2%	0.0%	13.5%
Immingham	0.8%	1.0%	0.0%	0.0%	1.8%
Immingham total	0.8%	1.0%	0.0%	0.0%	1.8%
Croft Baker	9.8%	9.4%	4.7%	0.6%	24.5%
Haverstoe	0.2%	16.5%	7.5%	0.0%	24.1%
Humberston and New Waltham	6.3%	3.7%	0.0%	0.6%	10.6%
Meridian total	16.3%	29.6%	12.2%	1.2%	59.2%
Scartho	0.2%	0.0%	0.0%	0.0%	0.2%
Waltham	0.0%	0.0%	0.0%	0.0%	0.0%
Wolds	1.2%	0.6%	0.0%	0.0%	1.8%
Wolds total	1.4%	0.6%	0.0%	0.0%	2.0%
North East Lincolnshire total	32.9%	48.6%	16.5%	2.0%	

- 510 children were stated as being on a waiting list for a childcare place, which is more than double the number reported last year. Of these, 402 children were on waiting lists to attend a pre-school.
- Of the 402 children on waiting lists at pre-schools, 353 were for children aged two years or under.
- Almost a quarter of all children reported to be on a waiting list are waiting for a place in both Croft Baker (24.5%) and Haverstoe (24.1%) wards, with Meridian neighbourhood area having almost 60% of all places.
- Early Years settings within Freshney and Waltham ward reported no children on waiting lists, while settings in East Marsh only reported 0.6% of the overall total.
- 81.6% of children on waiting lists are aged two or under, which is consistent with pre-school admission ages. This is likely to increase in line with changes to two year old funding eligibility due in September 2014 and the subsequent increase in available funded places that settings are able to offer.

It is worth noting that waiting lists are not an exact indicator of demand within a childcare setting. Some of the responses from the FIS update highlighted that parents chose to put their child on a waiting list for a setting for some of the following reasons:

- Place their child on a waiting list for a preferred setting whilst their child is attending another setting;
- Place their child on a waiting list for a setting whilst waiting for the child to reach the age that the setting intakes;
- Wait for a setting of their choice rather than take an available place at a setting with vacancies.

3. Appendices

3.1 Sources of information

Family Information Service,
Riverside Children's Centre,
Central Parade,
Grimsby,
DN34 4HE

North East Lincolnshire Council
www.nelincs.gov.uk

Office for Standards in Education (Ofsted)
www.ofsted.gov.uk

Department for Education (DfE)
www.education.gov.uk

North East Lincolnshire Childcare Sufficiency Assessment 2013/14 refresh

Prepared by:

Informatics and Research team
Commissioning and Information Systems,
Resources directorate,
Cleethorpes Civic Offices,
Knoll Street,
Cleethorpes,
DN35 8LN

Document Reference: *NELC.02.01.34.02*

Title: *Childcare Sufficiency Assessment 2013/14 refresh*

Author: *Informatics and Research team*

Published: *April 2014*