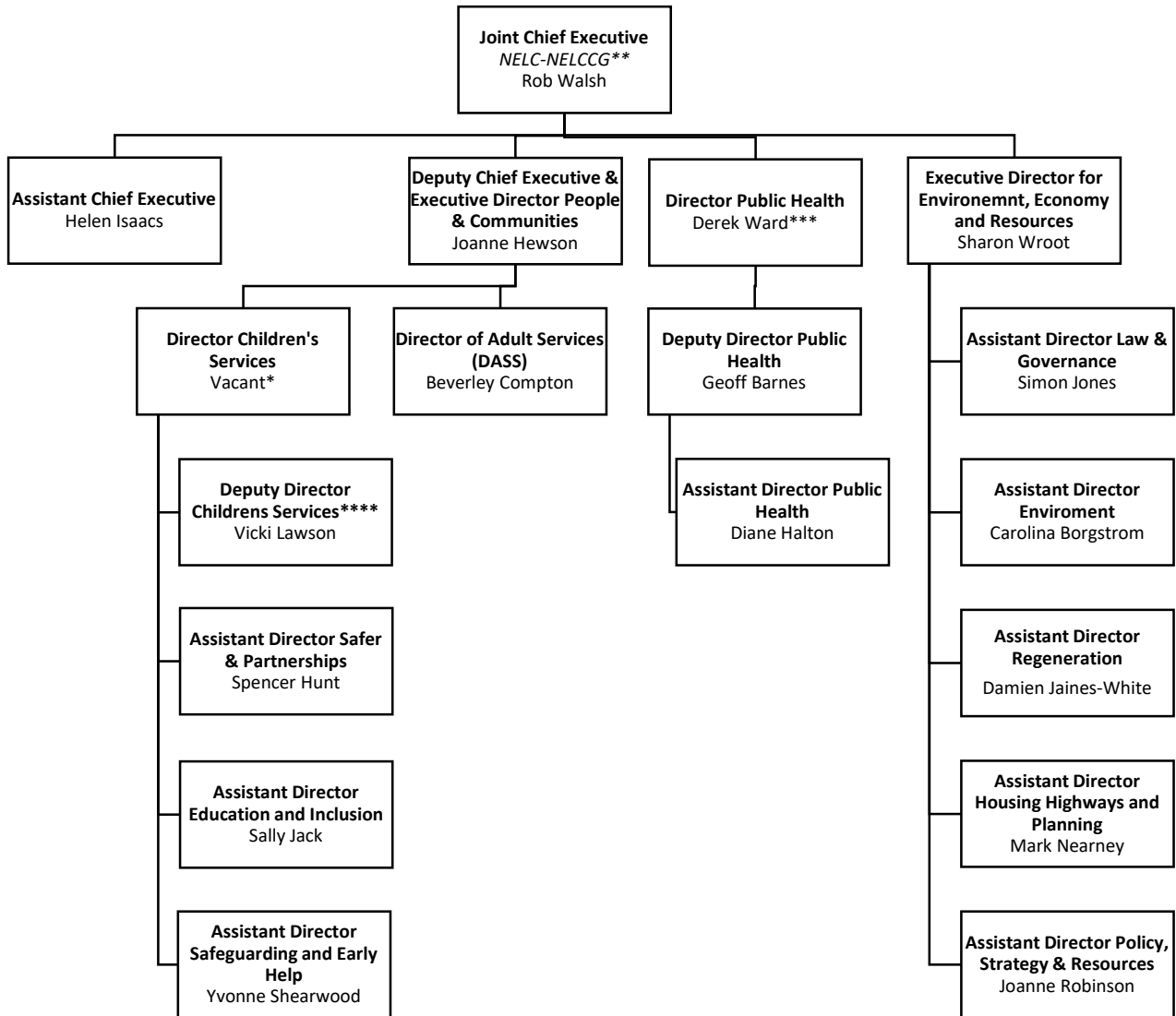


Organisational Structure & Functions



* Covered by Deputy Chief Executive & Executive Director People & Communities on an interim basis while vacant

** This may be subject to change following commencement of the new ICB arrangements

*** This role is subject to a shared arrangement with North Lincolnshire and Lincolnshire County Council

**** Interim post

People, Health & Care

- Children and Families
 - Children's Assessment and Safeguarding
 - Children's Resources and Regulatory Services
 - Contact Services
 - Family Information Service
 - FFAP, Through Care, Children's Disability Service
 - Family Group Conferencing and CSC
 - Localities
 - Pause
 - Service Improvement
- Education Services
 - Access and Inclusion
 - Child Health
 - Education Psychology
 - MAPAS
 - School Improvement Unit
 - SEN Services
- Health and Wellbeing
- Safer NEL
 - Community Safety
 - Safeguarding Boards
 - Strengthening Families and Young & Safe
 - Trusted Relationship Project
- Skills
 - Information Advice and Guidance
- Public Health

Environment, Economy & Resources

- Environment
 - Grounds Maintenance
 - Bereavement Services
 - Fleet
 - Garage
 - Street Cleansing
 - Waste Operations
 - Regulatory Services
- Economy and Growth Service
 - Energy Unit
 - Strategic Housing
 - Support Services
 - Discovery Centre
 - Museums
 - Resort
 - Tourist Information Centre
- Resources
 - Assets
 - Assurance, Risk and Audit
 - Commissioning and Strategic Support
 - Customer Management
 - Digital Programme
 - Finance
 - People and Culture
 - Information Technology
 - Legal & Democracy
 - Local Taxation and Benefits
 - Print and Design
 - Procurement