

# Annual Report

## 1. Introduction

Welcome to the annual scrutiny report, which highlights the key scrutiny activities and developments in North East Lincolnshire Council during the 2021/22 Municipal Year. The report provides a summary of the work undertaken by scrutiny in 2021-22 and outlines future work programmes.

While the work of scrutiny during the year has inevitably been focused on recovery from the COVID pandemic, a number of key challenges and opportunities facing the council have also attracted scrutiny's attention. These include the children's services improvement agenda, the forthcoming integrated care proposals, regeneration of Grimsby town centre, the climate emergency, domestic abuse and the development of the Cleethorpes Master Plan. There has also been an increased focus on pre-decision scrutiny, with the Economy Scrutiny Panel in particular receiving a number of reports prior to decision by Cabinet. This has led to a number of recommendations being made to Cabinet with the intention of strengthening the final decisions. There have also been a number of opportunities for joint working across the scrutiny panels to consider items such as the Economic Strategy, the Carbon Road Map and Natural Asset Plans. Scrutiny has continued its involvement in the budget setting process with all Members invited to attend both informal and formal sessions to comment on proposals prior to final decisions being made by full Council.

Scrutiny has a key role within the Council's governance arrangements to support effective delivery of the council's priorities and provide challenge, as appropriate, to make sure that the basis for decisions being taken by the Council are robust and this work will resume in the next Municipal Year. Key areas of focus during the coming year are expected to include children's and adult demand services, progress with bringing empty homes back into use, implementation of the integrated care system, the continued development of the Cleethorpes Masterplan and monitoring of 'vital signs' performance indicators contained within the Council Plan.

A multi-agency Strategic Improvement Board has been established to focus on children's social care. The work of the Children and Lifelong Learning Scrutiny Panel will complement this board and focus on matters in the wider children's services transformation plan.

Full Council has commissioned a review of the Council's overview and scrutiny arrangements. The outcome of the review is due to be reported to the AGM of the Council as part of the annual review of the constitution. It is anticipated that its recommendations will support Elected Members in their scrutiny role and provide improved opportunities for community involvement in both scrutiny and the wider decision making of the Council.

*Helen Isaacs, Statutory Scrutiny Officer  
Assistant Chief Executive  
May 2022*

Contents

1 Introduction ..... 1

2 Scrutiny in North East Lincolnshire ..... 3

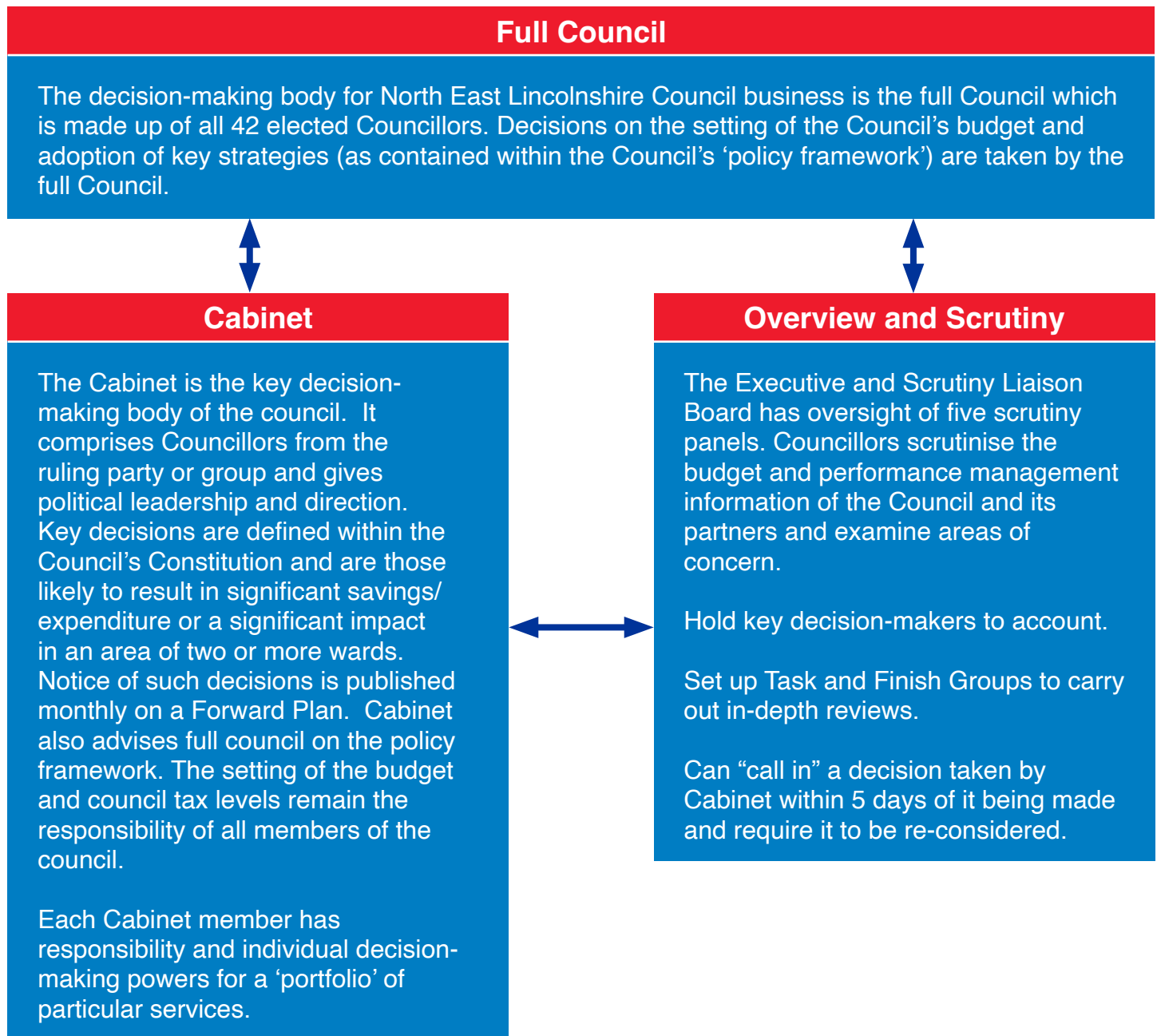
3 Scrutiny

- Children and Lifelong Learning Scrutiny Panel ..... 5
- Communities Scrutiny Panel ..... 8
- Economy Scrutiny Panel ..... 10
- Health and Adult Social Care Scrutiny Panel ..... 13
- Tourism and Visitor Economy Scrutiny Panel ..... 16

4 Get Involved in Scrutiny ..... 18

# Scrutiny annual report 2021-22

## 2. Scrutiny in North East Lincolnshire



Please note that decisions regarding certain functions are determined by 'regulatory' committees of the council such as the Planning Committee and the Licensing and Community Protection Committee. Such decisions do not fall under the remit of Scrutiny. There is co-ordination between Scrutiny and the Audit and Governance Committee on matters of mutual concern.

As part of the annual review of the Constitution, improvements have been discussed, across political groups, to strengthen the operation of panels including new guidance for Officers and Members attending scrutiny, induction and training for chairs and greater transparency in respect of the matters discussed at, and referral into, the Executive and Scrutiny Liaison Board.

## Overview

Scrutiny is a process that enables Councillors who are not Members of the Council's decision-making process to review and scrutinise matters affecting local people.

The role of Elected Members performing the overview and scrutiny function is to:

- Review and report on issues that affect the economic, environmental and social well-being of local people.
- Act as a check and balance to the Council's decision makers, examining and reviewing decisions and holding the Executive to account.
- Consider the work of public bodies operating outside the Council but which affect local residents, for example, local health services.
- Contribute to the development of future policies and strategies that will help improve services for local people.
- Involve local people in council decision making:
- Scrutiny is carried out using a range of methods, including panel meetings, working groups and select committees, but in all cases the process is non-political and Members from all groups participate.

## Our Panels

Our panels and chairs this year were:

Children and Lifelong Learning Scrutiny Panel – Councillor Oliver Freeston

Health and Adult Social Care Scrutiny Panel – Councillor Henry Hudson

Economy Scrutiny Panel – Councillor Tom Furneaux

Communities Scrutiny Panel – Councillor Paul Silvester

Tourism and the Visitor Economy Scrutiny Panel – Councillor Keith Brookes

Thanks are noted to Councillors, on all panels, for their contribution to the work of scrutiny over the last Municipal year.

## 3. Scrutiny



### Children and Lifelong Learning Scrutiny Panel

The municipal year 2021/22 started with the Children and Lifelong Learning Scrutiny Panel looking at the latest position with the improvement of children's social care following a focused visit from Ofsted in December 2019. A briefing was received identifying work undertaken within the service and detailing progress that had been made. The panel noticed that there had been an improvement, but they were aware that there was still some way to go. Following on from this update, an inspection of North East Lincolnshire Council local authority children's services took place in October 2021, which showed that our services for children and families had significantly deteriorated. With hearing the judgement of the Ofsted inspection, the panel received a further briefing informing panel members of the next steps and what the improvement journey would involve. Panel Members now receive an update on the Children's Services Improvement Plan at every panel meeting and also welcome the link between their work as a scrutiny panel and the work of the Children's Services Oversight Group (CSOG) that had been established to maintain oversight of the Children's Services improvement agenda.

Another key area that the panel have focused on was the Council's current position and performance against its Finance and Commissioning Plan at the end of the 2020/21. As part of the financial outturn report members wondered why there was such a large variance from last year's figures, particularly for the safeguarding and assessment service. One member requested that they received the methodology around the calculation of children services overspend and comparative figures for assessment and safeguarding over the last three years. With the panel in agreement, a briefing note was received detailing how officers had calculated the cost impact of COVID on

*"Following what has been a challenging year, I am pleased that we have returned to some normality and have in person meetings once more. We are now at a point in Children's Services where we must look to the future and be optimistic about the transformation that will take place. It will take time but I trust this panel will oversee it and scrutinise effectively. I am grateful to Members and Officers for their time and look forward to what the future holds."*

Councillor  
Oliver Freeston  
Chair





Children's Services and providing comparative financial outturn figures over the last few years. The panel noted that the figures showed that there was still a substantial reliance on agency staff and felt that it would be beneficial for a working group to be created to go through the council's agency employment in more detail. The scope for the working group was created and approved by members who particularly wanted to ensure that the local authority was doing everything they could to bring down the use of agency staff and improve staff retention. However, following on from the outcome of the Ofsted inspection and after receiving reassurance from officers that the use of agency workers would be looked at as part of the CSOG, it was felt that it would be a better use of resources for the working group to disperse until further work of the CSOG had taken place and feedback had been received by the panel.

Another part of the work programme that had particularly been important to follow up was the Autism Spectrum Conditions Diagnosis Pathway. Members gained an insight into the current programme that had been implemented in response to the work undertaken by a previous working group. The panel felt that they had been reassured that access to the right care and support for children and young people with learning disabilities and/or autism had improved and that clear visions had been set out for service users long term plans. The panel also gained reassurance that the new pathway allowed parents and children to have an input in creating the correct pathway for them.

The panel also received an update on the services for children and young people with Special Educational Needs and Disabilities (SEND). The service was subject to a full inspection by Ofsted and the Care Quality Commission in 2018, undertaken jointly across health, social care and education services. The outcome of the inspection resulted in the development of a remedial action plan, called a Written Statement of Action (WSOA). The WSOA has been a keen area of focus and challenge for the panel. A further inspection visit had been delayed due to the pandemic but the panel were assured that the Council had continued to maintain contact with the Regional Lead for the Department for Education and NHS England and there had been four monitoring visits during the last 12 months.

Strategic leadership in the borough had been strengthened and progress on the Written Statement of Action had continued throughout the pandemic. Stronger governance arrangements had been developed to oversee the progress on all SEND activities and a school link officer approach had been implemented to keep close contact with schools and academies. This had significantly improved the Council's working relationship with education settings. The panel were content with the update they had received, specifically where Officers had been open and honest on key areas that still needed development.

As part of the lifelong learning element, the panel focused on the numbers of young people who were not in education, employment, or training (NEETs). The panel received the latest figures and were pleased with the work that was going on with the cohort of young people. Members stated how it was encouraging to hear that local employers were taking on young people who were struggling to find work.

The panel also considered the consultation results of the Family Hub review. The panel has previously received this as a call-in of a decision taken by Cabinet. Officers stated that a very high percentage of people felt that all the aspects of the developing Early Help Strategy needed early support. People clearly felt that Family Hubs provided that support and a range of services not only for young children, but from a health perspective also. The panel noted particular concerns about the

potential loss of the Family Hub in Immingham. The panel used this opportunity to recommend that option 5 be considered when making a decision as the panel felt that it was most appropriate to close five of the Family Hubs identified in the original Cabinet report but reopening the Immingham site.

Other areas that had been scrutinised this year included:

- Educational attainment in North East Lincolnshire
- The Council Plan
- Pupil Placed Planning
- The Virtual School
- Mental Capacity Act 2005
- North East Lincolnshire's offer to Care Leavers who attend University.

Looking ahead to next year's work programme, suggested areas of focus for the panel are:

- The Transformation Plan
- Assurance from the Improvement Board in respect of Children's Social Care
- Education White Paper
- SEND Green Paper
- Matters arising from the Youth Offending Service inspection
- Emerging Health and Care Partnership opportunities



## Communities Scrutiny Panel

The Council's response to climate emergency declaration, including the Council's ambition to reduce its carbon emission net zero by 2050, was presented to the panel. They heard how the Council could lead, enable, and inspire on the carbon road map. The panel welcomed the next steps in the carbon road map to ensure the council's priorities were supported to meet the deadline of 2050.

The panel received a report referred by Cabinet on the decision to become a Registered Provider and Investment Partner, enabling the council to access future Homes England funding, and also to approve a Temporary Housing Allocations Policy. The panel welcomed empty homes being brought back into use. They were interested to understand the process of rough sleepers being able to live independently and the panel were reassured by the support they were given.

The panel received presentations throughout the municipal year on the work going on across the council and with partners around digital inclusion. Members welcomed the work that was being undertaken and appreciated the challenges, particularly with helping hard to reach residents to engage with digital technology and services. Members were keen to understand how success of the roll out would be measured and they requested an update at a future meeting.

The panel considered the reported crime statistics from April to September 2021 in North East Lincolnshire and their main concern was how open drug dealing was being dealt with on the streets. Superintendent French reassured the panel that Humberside Police were aware of the issue and there had been an increased police presence on the streets. There

were a number of specific operations ongoing, and

the use of the dome hawk cameras and drug dogs were all making an impact and this gave the panel encouragement that policing on the streets was increased to reduce crime across the borough.

*"First and foremost may I take this opportunity to thank members and officers for their continued support, professional input and their valuable contributions to the work programme of the Communities scrutiny panel. As we recover from the Covid-19 pandemic I believe the panel have been very effective in scrutinising the local authority and partner response and recovery programme and the required Emergency Decisions which has been an ongoing responsibility. Over the year it has also been very rewarding to see that recommendations and issues raised by the panel with regard to enforcement and CCTV has significantly progressed."*

Councillor  
Paul Silvester  
Chair





## Scrutiny annual report 2021-22

A scrutiny panel enforcement review took place in June 2020 and several recommendations made. The panel received an update at the meeting and were particularly interested in the new CCTV that was currently out to procurement. Members felt that the use of CCTV was vital in keeping members of the public safe in the town centre, parks and open spaces and the ability the cameras had to help stop anti-social behaviour and reduce crime. The panel welcomed an offer to go to visit the CCTV control room once the procurement was completed and the new systems were in place.

The rise in domestic abuse, particularly during the pandemic, was raised as a concern by members and they received a report that gave an update around the ongoing work to tackle domestic abuse across the borough. It detailed the progress to embed the partnership Domestic Abuse Strategy 2021-2024. As a result, the panel made a number of recommendations to be forwarded to the Safeguarding Children Partnership (SCP), Safeguarding Adult's Board (SAB) and Community Safety Partnership for collective consideration.

A report was referred by Portfolio Holder for Environment and Transport regarding a review of motorcycle nuisance prevention borough-wide following receipt of a petition requesting the installation of an anti-theft motorcycle gate in People's Park, Grimsby. There were several actions included in the report which the panel noted and asked for an update on the signage pilot at its meeting in November 2021 followed by a full evaluation of the pilot at the panel meeting in July 2022.

Looking forward to the work programme for 2022/23 the panel was keen to understand the latest county lines figures and the work that was going on to reduce this. They suggested joint work with Health and Adult Social Care Scrutiny Panel on monitoring the priorities in the Drugs and Alcohol Strategy. With the current situation in the Ukraine, the panel showed an interest in having a role in monitoring the Ukraine refugee crisis locally.

The Crime and Disorder Committee this municipal year considered a report that provided an overview of the findings from the Community Safety Partnership's (CSP's) Joint Strategic Intelligence Assessment, including performance data and emerging threats.

In addition, the panel considered reports on:

- Quarterly financial monitoring reports 2021/22
- Bereavement Services project.
- Changes to kerbside recycling, the bring to site review and progress with the food waste trial
- COVID-19 recovery plan updates.
- Overview of the current local arrangements in relation to the detection and prevention of anti-social behaviour and youth crime.
- CCTV Provision
- Expansion of Port Health Services.

Looking ahead to next year's work programme, suggested areas of focus for the panel include:

- Anti-social behaviour
- Safer Streets Funding
- Homes for Ukraine



## Economy Scrutiny Panel

This year started with a special meeting to give pre-cabinet scrutiny of the (Grimsby) Town Investment Plan Fund Projects. This report continued the panel's influence on key decisions relating to significant investment proposals for the regeneration of Grimsby town centre. Members comments and challenge were duly noted and considered by Cabinet in its decision making. At its scheduled meeting in October, the panel scrutinised further reports on St James House plus the Towns Fund Programme activation and community engagement fund.

Although the council did not receive its hoped for levelling up funding from central Government, the panel scrutinised initial proposals at its July panel meeting prior to approval by Cabinet. In August, the panel received public questions on the proposals, giving the portfolio holder an opportunity to respond directly to the issues raised.

The council declared a climate emergency in 2019 and, in July, members scrutinised progress of the carbon road map (carbon capture and mitigation; off-shore wind farms; impact on employment; Humber Zero; green transport; electric vehicle charging; and the potential for homes to be 'greener'). The panel will continue to receive regular updates on progress and development of the council's ambition to be carbon neutral by 2050.

There was further collaboration with the Tourism and Visitor Economy Scrutiny Panel to challenge and influence the council's revised Economic Strategy. An informal workshop was held in July 2021. Members' recommendations and comments were incorporated into the draft strategy. The panel made recommendations to Cabinet regarding careers advice for young people and the extent of the visitor economy in North East Lincolnshire. These recommendations were accepted by Cabinet and subsequently adopted as an addition to the strategy by full council in September 2021.

*"The Economy Scrutiny Panel has again had an extremely active year, having given pre-Cabinet scrutiny and input on a wide range of issues including the Town Investment Plan Fund, the Bus Service Improvement Plan and Off-Street Parking Places Order. A number of special meetings have been held to debate and scrutinise matters which have fallen outside of the scope of our usual meeting dates, and my thanks goes to all members and all others involved for the valuable input and attendance at such meetings and all other meetings generally."*

Councillor  
Tom Furneaux  
Chair



## Scrutiny annual report 2021-22

The panel was consulted on the council's housing delivery model at its August meeting. Members queried the level of interest in the 'Western' site, the preferred developer types, Covid19 and Brexit related risk assessments, new build electric vehicle (EV) charging points and timescales. The panel's comments were conveyed to Cabinet to inform its decision making.

A special meeting in October was called to give pre-cabinet scrutiny to a new bus service improvement plan. The plan aims to improve the quality of bus services and increase bus passenger numbers through an enhanced bus quality partnership involving local authorities and bus operators. The panel provided challenge on a number of related matters such as electric vehicles, the location of a bus interchange, park and ride proposals, reduced fares for young people, and 'dial-a-ride' services. The panel recommended to Cabinet that should the anticipated funding level not be met, then the revised and re-prioritised bus improvement plan be referred back to the panel. In March the panel received a further report outlining the next steps toward an enhanced bus quality partnership. It was agreed that the panel would receive an annual report on progress.

The panel also made recommendations to Cabinet following its pre-decision scrutiny of the Review of Subsidised Bus Services. The panel was concerned about the costings and information available. It recommended that a 12 month extension to the existing contract for subsidised bus services be sort in order to allow a detailed review of the subsidised services to ensure that value for money was being achieved.

In October, following a cabinet referral to all scrutiny panels, the draft council plan was presented to the Economy Scrutiny Panel. Members challenged a number of issues including scrutinising the delivery and success of the plan through 'vital signs' and regular monitoring reports to scrutiny panels. Questions on achievable milestones, resources, partnership working and Grimsby's 'Food Town' brand were responded to. The panel requested a written response on performance management of vital signs within its terms of reference. The plan was duly approved by Cabinet in February and adopted by full council on 17th March 2022.

The Local Plan Review returned to the panel in October following Cabinet consideration and in accordance with the requirements of the national planning policy framework. The panel received assurances that, as before, a cross party working group would be set up as part of the consultation process. Members also queried the costs of the review and the rationale for the housing supply deficit.

At its scheduled meeting in January the panel gave input to a draft off-street parking places order. A number of issues discussed including electric vehicle charging bays, taxi parking bays, consultation with businesses and partners, the review timetable, residents' parking schemes, and cashless parking. Formal pre-decision scrutiny in March clarified members' understanding with the panel's comments noted and referred to Cabinet.

The panel's annual scrutiny of the Local Transport Plan took place in March. Members questioned frequency of works to specific locations, electric vehicle charging infrastructure, funding for electric vehicle charging points and the impact of COVID-19 on the plan.

The panel continues its scrutiny of the Council's strategic partnership with EQUANS (formerly Engie). This is achieved throughout the year via regular reporting to the panel on agreed performance indicators and in monitoring the partnership's improvement action plan. Regarding performance, members challenged on topics including empty homes, cycleways, new homes (completions), land supply, enforcement staffing levels, and inspection of highways and footway works. A report in October, which gave an update on the partnership's improvement action plan, prompted questions on CO2 emissions and contract management arrangements.

Quarterly finance monitoring reports have prompted challenge on small business rate relief extension, collecting business rates post-COVID, loss of fees and charges, the level of council reserves, resource and capacity issues, delivery of the capital programme, and the financial impact of delays to the South Humber Industrial Investment Programme.

During this municipal year, the panel has also received reports on the following topics:

- Humber Freeport – update
- SHIIP - update
- Disposal of sites suitable for development across North East Lincolnshire
- Concessionary bus fares
- Empty Homes - update

The following work remains of interest to the panel and will be carried forward into next year's scrutiny work programme:

- South Humber Industrial Investment Programme (SHIIP) - timely updates on progress
- Empty homes, regular updates
- Monitoring performance relating to the delivery of the council plan and economic strategy
- Enhanced bus partnership annual update on progress
- Gypsy and Travellers designated stopover site (pre-cabinet)
- Aspects relating to COVID recovery plan including the effect on current programmes
- Implementation of freeport proposals
- Energy Carbon Roadmap – regular updates.





## Health and Adult Social Care Scrutiny Panel

Throughout the municipal year the panel focused on understanding the impact of the COVID-19 pandemic on residents health and their access to health and adult social care services as a consequence. The COVID-19 impact assessment was presented to the panel and key concerns were the long-term effects on residents mental health and whether services were in place with workforce capacity available to treat people. The panel requested that a full report on mental health be brought to a future meeting and carried forward on the programme for 2022/23.

In the COVID impact assessment report the panel picked up on the increase in addiction during lock down which resulted in a request for a report on the scale and effect of gambling across North East Lincolnshire. The panel wanted to understand the increase in people buying scratch cards and had concerns about young people gambling and online betting. Following the meeting, the panel received a briefing paper highlighting how the Licensing and Trading Standards teams were enforcing underage attendance in betting shops and the purchase of scratch cards together with the current intelligence led approach.

With the development of the Integrated Care System moving at pace, the panel received a report from the Chief Executive and he attended a couple of panel meetings giving detailed updates which outlined the plans both locally and nationally for the development of an integrated care system and what that meant for North East Lincolnshire. The panel expect to be involved in further scrutiny of the proposals over the coming months.

Following a resolution from Full Council, the panel held a special meeting in August to consider the consultation on prescription charging for those aged 60 years old and over. The panel formulated a response to the consultation on behalf of the Council.

As a result of pending changes to the Mental Capacity Act 2005. Members sought reassurance that children's services, hospitals and the integrated care system had plans in place, and being progressed, in order to be ready to implement the changes to the Act in time for the implementation in 2022. The panel recommended to the Children and Lifelong

*"Whilst continuing oversight of the COVID epidemiology this year, the panel has also scrutinised a wide range of different health and social care key issues that affect local people and as Chair, on behalf of the panel, I welcomed the input from partner organisation and officers."*

Councillor  
Henry Hudson  
Chair





## Scrutiny annual report 2021-22

Learning Scrutiny Panel that it also be reassured of the same process within children's services, and they agreed to closely monitor progress before the implementation date to ensure the plans were in place across all the areas so that service users were not adversely impacted.

Two senior clinicians from North East Lincolnshire and Goole NHS Foundation Trust (NLAG) and Hull University Teaching Hospital attended the panel to talk through the temporary service change to breast oncology across the region. Members were extremely concerned about the longevity of all oncology services locally and the national shortage of specialist consultants. The panel questioned the strategic long-term planning and training of new consultants to give reassurance that outcomes for patients would be at the forefront. Members were reassured that breast oncology services, such as therapies and specialist nurse support, would remain locally and this was welcomed by the panel.

The Chief Executive, Chief Nurse and Infection Control Manager from NLAG attended the meeting to update on the Duty of Candour that had been applied to those patients who had suffered moderate harm, died, were admitted to intensive care or were now attending a long COVID clinic as a result of testing positive on day eight or above, after admission to hospital. Members were reassured and welcomed procedures put in place to minimise the spread of COVID-19 across the hospital through infection control.

A key role of the panel is to scrutinise performance of local NHS and adult social care services performance. Throughout the year they scrutinised the social care statutory annual complaints report and the North East Lincolnshire Safeguarding Adults Board annual report for 2020/2021. Members suggested that performance data be included in next year's report to enable them to scrutinise and be given reassurance that North East Lincolnshire is a safer place for all people but specifically those adults within the community who are at risk of experiencing abuse and/or neglect.

The panel received a briefing paper on the disabled facilities grant spend for 2020-2021. Members were extremely concerned about the length of time it was taking for assessments to be made and adaptations to be completed and felt it was unacceptable when the money was available in the budget. The panel wanted reassurance that the process would be quicker to enable residents to live in their own homes with the adaptations to improve their quality of life. The panel agreed to continue to monitor the Disabled Facilities Grant overall spend as well as progress on reducing the waiting time from referral to adaptation completed.

Looking forward to the work programme for 2022/23 the panel were keen to work jointly with the Communities Scrutiny Panel to monitor the priorities in the Drugs and Alcohol Strategy. The panel also wanted to consider the implications of the Cost of Care White Paper on Council funding and look at the impact of the COVID pandemic on health inequalities, mental health and addiction.

In addition, the panel considered reports on:

- Winter Planning
- Humber acute service review that highlighted the timescales for consultation, including with the panel.
- Quarterly financial monitoring reports 2021/22
- The Council Plan
- COVID-19 epidemiology
- Provisional outturn report
- Summary hospital level mortality indicator figures

It is suggested that the following items be considered for inclusion in next year's scrutiny work programme:

- Integrated Care System
- Humber Acute Service Programme
- Post covid healthcare services
- Monitoring the priorities in the Drugs and Alcohol Strategy (potential joint work with the Communities Scrutiny Panel)
- Disabled Facilities Grant
- The implications of the Cost of Care White Paper on council funding.
- The impact of health inequalities on the residents of North East Lincolnshire.



## Tourism and Visitor Economy Scrutiny Panel

This year for the Tourism and Visitor Economy Panel the main focus has been on the Cleethorpes Masterplan and the Creativity Strategy. These important documents were considered both informally and formally by the panel prior to Cabinet, giving members ample opportunity to engage and contribute. They were subsequently approved at Cabinet and as a result the Panel will be involved in monitoring the implementation of the Cleethorpes Masterplan throughout the next municipal year. A number of the panel's interests will be incorporated into the Cleethorpes Masterplan, including the development of a potential Motorhome Aire, and the renaming of the boating lake in Cleethorpes.

Another area of focus for the panel was the successful bid and award of the Welcome Back Fund. The funds were to help build back better from the pandemic and allowed local authorities to put in place additional measures to create and promote a safe environment for local trade and tourism, particularly in high streets as their economies reopen. A number of activities and enhancements were planned with the funds, as well as a tourism recovery and marketing plan to support the tourism sector. The panel will be following the progress made with the funds in the new municipal year.

The panel have been kept informed on progress made with Grimsby Creates and the impacts it's been having within the borough, the panel will continue to receive updates on the positive developments over the next year.

*"It has been a pleasure and a privilege to chair this panel, my thanks go to all council members and officers for the work that they put into producing the reports and ensuring any recommendations made by the panel were carried out were possible.*

*The panel looks forward to continuing its work in the coming year, prioritising those areas where a difference can be made to the services provided by the authority, for the benefit of the local community and visitors to the area."*

Councillor  
Keith Brookes  
Chair



# Scrutiny annual report 2020-21

This year the Grimsby Fishing Heritage Centre Museum Accreditation was due, and the panel were in full support of the policies and procedures being reviewed in order to progress the application with Arts Council England. Museum Accreditation is an agreed standard, which demonstrates how museums manage their collections properly, engage with visitors, and are governed appropriately.

The development of a single storey car park at Grant Street was considered by the panel prior to Cabinet approval, the investment into additional car parking spaces, including electric charging points, for the resort was welcomed and the panel requested that they be kept informed as the project progresses, specifically regarding the designs for the car park which will be due to a panel meeting in the coming year.

In addition to this, the panel have received a number of briefing updates including:

- Heritage Open Days
- Heritage action zone and historic vessels
- Signage review
- Playing Pitch Strategy
- Historic Centre and Archives Review
- Annual Resort Managers report
- Eco Tourism
- RNLI Station development
- Heritage Starter Fund
- Local Tourism Action Plan

In addition to priority outcomes within the panel's terms of reference, the following topics will be considered for next year's scrutiny work programme:

- Welcome Back Fund
- Cleethorpes Masterplan
- Grant Street Car Park – consultation on the design
- Council Land Use Policy

## 4. Get involved in scrutiny

One of the key roles of scrutiny is to work on behalf of residents to address the issues that are causing concern to people who live and work in the borough. We are using this report to tell you what we have done and we want you to tell us what you think we should be doing next. Please use the contact details at the end of this report if you would like us to focus on a particular issue in future.

All agendas and minutes of scrutiny panels as well as reports from scrutiny working groups are available by following the links on our website – [nelincs.gov.uk](http://nelincs.gov.uk)

This report is also an opportunity to say thank you to everyone who has contributed to the scrutiny process over the past twelve months. To be able to function effectively, scrutiny relies on the invaluable knowledge and expertise of witnesses. Last year a wide range of individuals and organisations assisted us in our work, including:

- Service users
- EQUANS
- Humberside Police
- East Midland Ambulance Service
- NHS Foundation Trust

But we are not content to leave it there...

Members of the public are:

- Welcome to attend scheduled scrutiny panel meetings to observe local scrutiny in action. To find out what is being discussed and what to expect please have a look at the website or contact the scrutiny team.
- Encouraged to make suggestions for future scrutiny reviews by contacting your local councillor or the scrutiny team. You can do this by email, post or telephone.
- Able to approach councillors with your views on specific issues so that these can be added into the debate on the scrutiny panels
- Able to speak on specific issues, with the prior permission of the panel chair.

Scrutiny cannot promise to form the same conclusions as you do but your comments will be acknowledged and considered.

Sometimes we receive correspondence that raise issues outside of scrutiny or the council's remit – should this happen we will forward your comments to the relevant service or partner organisation and ask them to provide you with a response.





If you would like further information about scrutiny,  
please use the contact details below:

Scrutiny and Democratic Services  
North East Lincolnshire Council  
Municipal Offices  
Town Hall Square  
GRIMSBY  
DN31 1HU

Tel: 01472 324121

Email: [democracy@nelincs.gov.uk](mailto:democracy@nelincs.gov.uk)

Website: <https://www.nelincs.gov.uk/your-council/decision-making/scrutiny/>