

Shared Private Drive

Shared private drives can serve a maximum number of 5 dwellings and will not be adopted by the Local Highway Authority. All shared private drives should include turning facilities to allow access and egress in a forward-facing gear.

The driveway should be surfaced with bound materials. No loose surfacing material of any type will be acceptable within 10 metres of the public highway to negate the possibility of the material being transferred onto the adopted highway. The construction specification should be similar to that for a footway vehicular crossing.

All shared private drives should be set out at 90 degrees to the road of which they access from, with the first 6 metres being a straight section of carriageway.

2m x 2m pedestrian visibility splays will be required at the rear of the footway as well as vehicular access visibility splays.

Typically, refuse collection will not enter private drives, and as a result any dwellings more than 20m from the highway will require a bin-collection point as well as dropped kerbs to assist wheelie bin collection.

Ideally shared private drives will allow for 2-way traffic and be a minimum of 4.1 metres wide as set out in the Manual for Streets to allow a car to pass another car. A minimum of 5 metres width for the first 6 metres from the rear of the highway is required to accommodate vehicle tracking.

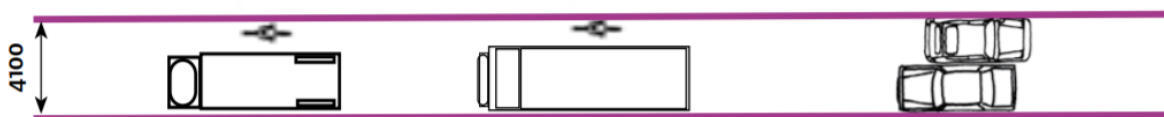


FIGURE 1 - MANUAL FOR STREETS - 7.2 STREET DIMENSIONS

Where 2-way movement is not possible, single lane shared private drives may be accepted if;

- A minimum of 5 metres is provided within the first 6 metres from the entrance to allow vehicles to pull safely off the highway without being impeded.
- Passing places are installed at acceptable intervals or where the drive is greater than 18 metres in length. Passing places width can be a minimum of 4.1 metres.

- The characteristic of the street in which the drive accesses from allows (e.g. classification, speed, volume of vehicular/pedestrian traffic, visibility).

Where only a single lane is possible, the minimum acceptable width is 3.7m to allow access for emergency service vehicles. Where a carriageway width of less than 3.7 metres is proposed, the local Fire Safety Office may need to be consulted in-line with Approved Document B5, Section 11 for Domestic Premises.