

North East Lincolnshire

Joint Commissioning Strategy for Special Educational Needs and Disabilities and Alternative Provision (SENDAP)

2024 – 2029



**Humber and North Yorkshire
Health and Care Partnership**



Internal Ref:	NELC/Integrated Care Board Joint Commissioning Strategy for SEND
Review date	2023
Version No.	V0.4 Draft for community consultation

Contents

Background

What do we mean by Joint commissioning?

Talking, Listening and Working Together

Our Joint Commissioning Principles for SENDAP

Talking, Listening and Working Together

Joint Commissioning Plan, Our Priorities

How will we know if we are making a difference?

How we will monitor our progress

Related Documents

Our Jargon Buster

Our key actions and intended impacts

Background

Commissioners in North East Lincolnshire have been developing integrated approaches to service design and delivery for more than a decade. We recognise the value of joint working and combining health, care, and education resources together to design and deliver services which address children and young people’s needs in a comprehensive and holistic way.

This strategy details our approach to deliver the improvements identified in the overarching joint SENDAP strategy which details the drivers for change and our vision for the future which is:

“Our vision is for every young person in North East Lincolnshire with Special Educational Needs and Disabilities to be included in education and society; to develop their independence; and to achieve the outcomes that are important to them to lead successful and fulfilling lives.

To provide access to an alternative provision system that focusses on supporting children to remain in or return to mainstream education”

We are further strengthening the relationship between North East Lincolnshire Council (NELC) and Humber and North Yorkshire Integrated Care Board by building on the adoption of an ‘integrated’ model with the benefits of a joint approach to tackling the key challenges. This has included the appointment of a Children and Young People and Families Board where various subgroups report into for final decisions as needed from the Health and Wellbeing Board. All groups are made up of key partner agencies and involvement from the community representatives in decision making.

The newly developed governance arrangement will support the SEND partnership to jointly commission and deliver the ‘right support at the right time’ in a more efficient way and ensure that leaders are held to account for progress against the SENDAP Strategy.

Our governance model is outlined below in figure 1 below.

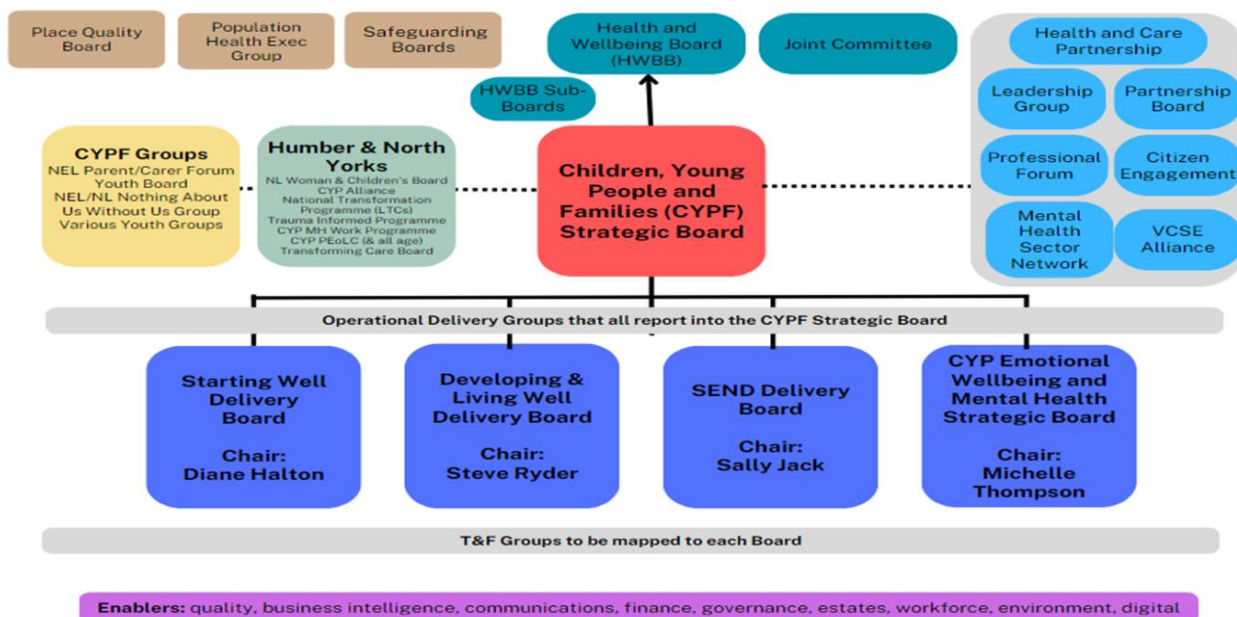


Figure 1 – Our Governance Model

Our partner organisations share the vision of North East Lincolnshire as a *place*, working collaboratively to build stronger communities and a stronger economy for the benefit of all local residents.

The governance arrangements for Local Authority and The Humber and North Yorkshire Integrated Care Board (ICB) continue to develop and strengthen. This will further enhance the ability of health, education, and children's social care to be able to work effectively together both at an operational and a strategic level.

The purpose of this strategy is to formalise and reinforce our approach to joint commissioning for Special Educational Needs and Disabilities and Alternative Provision (SENDAP) with NELC, Humber and North Yorkshire Integrated Care Board and other partner agencies to meet our duties in line with SEND code of practice 2014, providing value for money, driving efficiencies, and ultimately improving the outcomes and experience of children, young people, and their families.

By supporting and developing joint commissioning practices, services will be able to keep pace with changing need and ensure that the best possible outcomes are achieved against a set of locally agreed priorities.

The Children and Families Act 2014 included reforms to the way that organisations work together to support children and young people aged 0-25 with SEND. These reforms place a duty on agencies to work together across education, health, and care for joint outcomes.

Local authorities and ICBs must make joint commissioning arrangements for education, health and care provision for children and young people with Special Educational Needs (SEN) or disabilities (Section 26 of the Act). This is reflected in the current area SEND inspection framework as well. Our intent is to foster a joined up and holistic approach to commissioning at a strategic, operational, and individual level to meet need and ensure compliance with legislation, national guidance and recognised good practice.

This approach should be prioritised to ensure the best use of our shared resources aligned to actual need and provide value for money services in the face of increasing financial pressures. A long term, integrated commissioning plan, which includes robust forward planning and adopts the principles of prevention and early help, will help meet these financial pressures now and in the future.

Our Joint Commissioning Priorities for SENDAP over the next 3 years can be found towards the end of this document. These priorities have been informed by sources detailed in the SENDAP Strategy and are based on a robust Joint Strategic Needs Assessment for Children and Young People.

For further details regarding the data analysis and insights which informed the strategy please see our data linked her

[Local area Special Educational Needs and Disabilities report for North East Lincolnshire Council | LG Inform](#)

SENDAP context document

What do we mean by Joint commissioning?

Since the publication of the original 2018 Joint Commissioning Strategy, we have continued working together to develop and implement a common approach to commissioning. In March 2019 this joint approach was agreed by what was the decision-making group, the 'Union Board' and the implementation of the SEND written statement of action (WSOA) plan at the time was agreed as a union priority.

Whilst the Union Board has been replaced by the CYPF Board the definition is felt to remain relevant to the current approach in 2024.

Our jointly agreed commissioning definition is:

“Commissioning is the process by which we assess the needs of the population and ensure that appropriate responses are designed and delivered, to improve health, care and life experiences.”

The National Audit Office defines successful commissioning as delivering the right outcomes at the right cost. Successful commissioning is provision of a quality service which represents good value for money.

Commissioning activities include:

- assessing the needs of the people of North East Lincolnshire
- setting priorities and developing plans to meet those needs in line with local and national priorities.
- securing sustainable solutions from providers (internal and external) to meet those needs.
- monitoring and evaluating outcomes and all underpinned by
- stakeholder engagement that makes a difference to the way services are provided and leads to improved outcomes.

In NEL our Children and Young People and Families Strategic Board follow the SEND code of Practice (2014) place-based approach to joint commissioning as per figure 2 below

The joint commissioning cycle

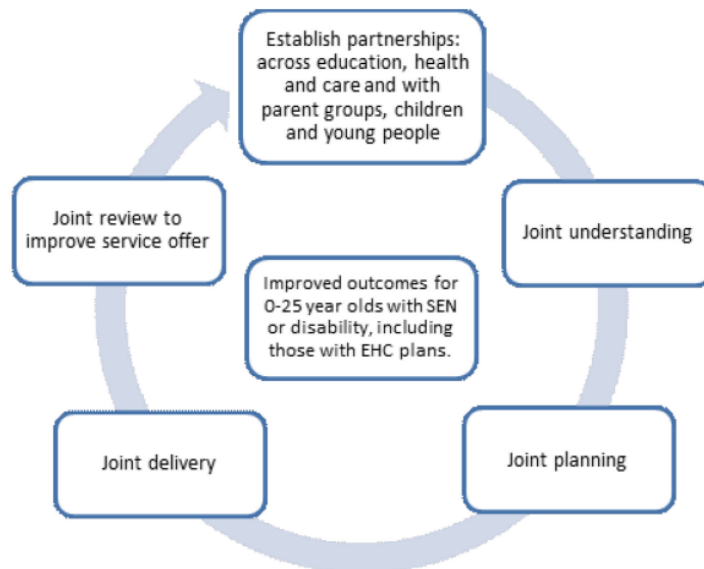


Figure 2 - The Joint Commissioning Cycle

Successful commissioning leads to good decision making, based on evidence and a thorough understanding of need which together set a path for delivering the right outcomes and value for money. It is an ongoing and inclusive process which determines where and how best to deploy the total resources available to meet identified need. There is agreement to a common commissioning approach and principles (see Figure 3 below).

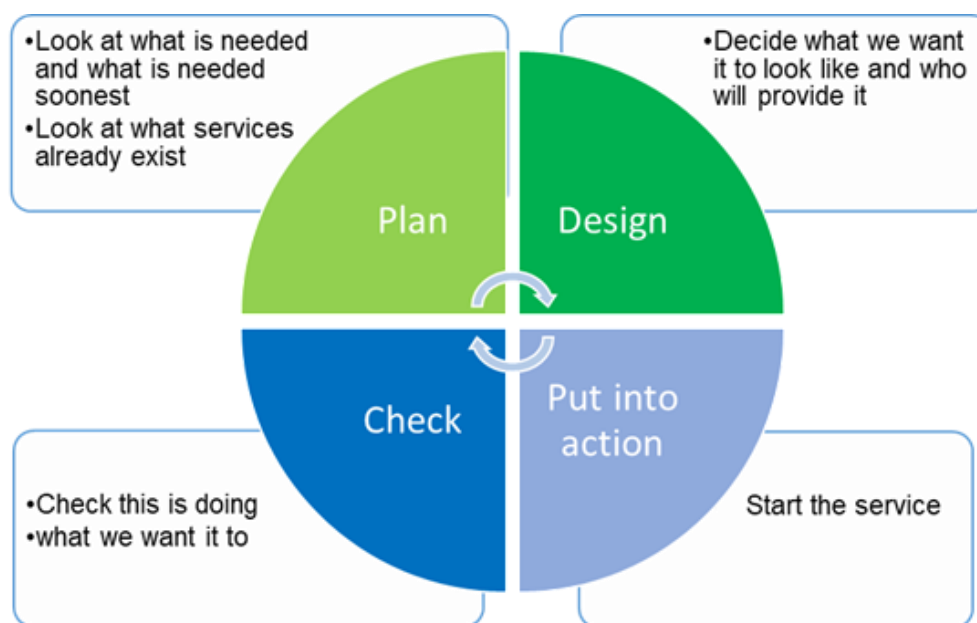


Figure 3 – Our Joint NEL Commissioning Cycle

Our Joint Commissioning Principles for SENDAP

Our commissioning approach is underpinned by a set of CYPF Board commissioning principles which are translated as follows for all work in relation to SENDAP. We will:

- have a single approach when we look at what impact any proposed change we are considering may have.
- work with other organisations for the benefit of our children and families (for example, we will work with schools, academies, health providers and other partnerships).
- where possible, make sure we put in place evidence-based services and consider what is important to local children and families.
- ensure the services we put in place meet the needs of families and fit in with our wider plans for the neighbourhoods they live in and the difference we expect these plans to make.
- make sure the children and families that use our services help us to plan, design and implement them (co production) .

- ensure that everything we do supports young people to become as independent as possible and achieve their full potential.
- actively promote innovation including the use of technology and digital approaches to support.
- make sure that making a positive difference for children and families is at the heart of our commissioning process.
- put a strong focus on delivering better-value, effective support, with quality and safety considered at each stage.
- plan services that make the most of the skills and experience of all people working with our children and families so that the health, education, and family support system works seamlessly for them.
- support children and families to understand and be able to ask for the support they have a right to.
- take every opportunity to promote inclusion, wellbeing, and independence.

Talking, Listening and Working Together

Talking, Listening and Working Together is an agreed approach to community engagement, service user and resident involvement adopted by the Local Health and Care Partnership (HCP). The HCP includes local health, and care providers and voluntary, community and social enterprise (VCSE) organisations, North East Lincolnshire Council and local voluntary, community, and social enterprise (VCSE) organisations have also agreed the Talking, Listening and Working together approach for their wider activities. The approach in figure 4 below sets out how we all intend to meet the North East Lincolnshire Commitment.



***‘You’** refers to all stakeholders, including children, young people, parents, and carers.

Figure 4- The North East Lincolnshire Commitment

We will continue throughout our commissioning to continue to talk, listen and work together using a variety of ways including attendance at groups such as the Parents Carers Forum (PCF) , Young People’s Action Groups (YPAG), focus groups, drop ins, as well as using feedback from our annual surveys , questionnaires and community conversations .

Below is some of the feedback gathered from different activities from our PCF , SEND audit, YPAG, Young People’s group, including Delivering Better Value project analysis and Alternative Provision Review 2023 which informed this strategy. Further key insights can be found in the SENDAP context document.

Voices:



- *A lack of sufficiency and flexibility with the current commissioned model.*
- *Waiting times for statutory assessment impacted the children who needed timely support*
- *There needs to be a clear and distinct outreach offer to both prevent permanent exclusions and offer professional development for the mainstream workforce.*
 - *There's a lack of timely alternative provision leading to permanently excluded pupils.*

Short breaks

- *Parents told us waiting lists for short break overnight respite are too long; not enough provision, can't access activities as not wheelchair friendly, by time know about an activity its full*

Joint Commissioning Plan, Our Priorities

Five key priority areas to work towards achieving our shared vision

Following our insights gained from families, children, young people, professionals and the community along with our data analysis the following five priorities have been identified:

1. **Graduated response to additional needs through partnership working and workforce development** - Work across the SENDAP partnership to improve parental confidence in meeting children with SENDAP needs in mainstream early years settings, schools and colleges.

2. **School places** - Increase the range and number of high needs places available for children with EHCPs across North East Lincolnshire, reducing the overall demand for Independent Non-Maintained Special School Places and personalised packages of support. Provide timely, flexible and sufficient AP places.

3. **Improve joint commissioning of pathways and awareness of services** across education, health and care to ensure that access appropriate assessment and provision. Improvement of timely and flexible alternative provision packages of support and clear and distinct outreach offer to both prevent permanent exclusions and offer professional development for the mainstream workforce.

4. **Transition** – improve further, the links and pathways between teams who support children as they move into adulthood to ensure a smoother transition into services and provision.

5. **Short breaks and respite offer** - jointly commission choice for families of targeted and specialist provision and increase availability

How will we know if we are making a difference?

By 2029:

- More families reporting that they are receiving effective support at the right time
- Fewer children will be attending an education setting out of area
- Fewer suspensions
- Fewer permanent exclusions of children with SEND
- Stabilisation of children requiring an EHCP
- Increased % turnaround of processing Education Health and Care Plan Referral (EHCARs) at 20 weeks
- Improved pathways, governance and finance agreements for joint commissioning at an individual level.
- Attendance improved
- Measured improvement of effectiveness joint commissioning and contract management for services across SENDAP via the joint commissioning working group

How we will monitor our progress

There will be quarterly progress reports to our SEND Executive Board which is made of parents/carer and multi-agency representatives and reports into the Children and Young Peoples Partnership Board. There will be regular discussions and feedback with different groups such as our PCF, YPAG, Schools forums and different agencies decision makers as per our co production approach. Our action plan will be reviewed each year.

Related Documents

Related North East Lincolnshire Strategies and Documents: (add links)

- NELC's Outcomes Framework
- The Local Offer [NELC SEND Local Offer | You searched for plans - NELC SEND Local Offer \(nelincs.gov.uk\)](#)
- The SENDAP Strategy 2024-29
- SENDAP Sufficiency Strategy 2024-29

- Alternative Provision review 2023
- Delivering Better Value in SEND action plan
- Education and Inclusion Strategy
- Attendance duties [Summary table of responsibilities for school attendance \(publishing.service.gov.uk\)](https://publishing.service.gov.uk)
- Health and Wellbeing Strategy
- Talking, Listening and Working Together Community Engagement Strategy

Our Jargon Buster

Our jargon buster can be found here

[NELC SEND Local Offer | Jargon Buster - NELC SEND Local Offer \(nelincs.gov.uk\)](https://nelincs.gov.uk)

Thankyou

Our key actions and intended impacts

	Priority	Key actions	By when	Intended impact by 2029
1.	Graduated response to additional needs through partnership working and workforce development - Work across the SENDAP partnership to improve parental confidence in meeting children with SENDAP needs in mainstream early years settings, schools and colleges.	<ul style="list-style-type: none"> - Delivering Better Value in SEND project delivered , which includes up skilling joint workforce, training programme delivery, action plans for each educational setting . - Joint commissioning and delivery of pilot outreach service and speech and language service capacity - Jointly commissioned services in family hubs, Better Start for Life 	<p>July 25</p> <p>July 25</p> <p>March 25</p>	<p>Decrease in Education, health and care plan requests as needs can be met in inclusive mainstream provision</p> <p>Stabilisation of children requiring an EHCP</p> <p>More families reporting that they are receiving effective support at the right time</p> <p>Attendance improved</p>
2.	School places - Increase the range and number of high needs places available for children with EHCPs across North East Lincolnshire, reducing the overall demand for Independent Non-Maintained Special	<ul style="list-style-type: none"> - Joint commissioning of multiagency support to keep children and 	<p>March 25</p> <p>March 25</p>	<p>Fewer children will be attending an education setting out of area</p>

	<p>School Places and personalised packages of support. Provide timely, flexible and sufficient AP places.</p>	<p>young people in NEL area</p> <ul style="list-style-type: none"> - Joint commissioning of early years provision - Joint commissioning of minimum 75 new Resource Specialist Provision and 150 place SEMH free school - Improve pathways and awareness of services across health and care to ensure access to appropriate assessment and provision - Address access pathway delays 	<p>September 26</p> <p>July 25</p> <p>July 25</p>	<p>Cost reduction achieved as per DBV project</p> <p>Fewer suspensions</p> <p>Fewer permanent exclusions of children with SEND</p> <p>Improved pathways, governance and finance agreements for joint commissioning at an individual level.</p> <p>Attendance improved</p> <p>Fewer suspensions</p> <p>Fewer permanent exclusions of children with SEND</p> <p>Stabilisation of children requiring an EHCP</p> <p>Increased % turnaround of processing Education Health and Care Plan Referral (EHCARs) at 20 weeks</p> <p>More families reporting that they are receiving effective support at the right time</p>
--	---	---	---	---

<p>3.</p>	<p>Improve joint commissioning of pathways and awareness of services across education, health and care to ensure that access appropriate assessment and provision. Improvement of timely and flexible alternative provision packages of support and clear and distinct outreach offer to both prevent permanent exclusions and offer professional development for the mainstream workforce.</p>	<p>-Improve pathways and awareness of services across health and care to ensure access to appropriate assessment and provision</p> <ul style="list-style-type: none"> - Address access pathway delays - The complex case panel review effectiveness and strengthen practice (strategic) -A joint funding resource panel to be developed which will jointly commission packages such as short breaks (operational) -Improve the Local Offer Website and information sharing support to navigate pathways 	<p>July 25</p> <p>July 25</p> <p>July 24</p> <p>July 24</p> <p>July 24</p>	<p>Measured improvement of effectiveness joint commissioning and contract management for services across SENDAP via the joint commissioning working group</p> <p>Improved pathways, governance and finance agreements for joint commissioning at an individual level. Attendance improved</p>

<p>4</p>	<p>Transition – improve further, the links and pathways between teams who support children as they move into adulthood to ensure a smoother transition into services and provision.</p>	<ul style="list-style-type: none"> -New protocol development to be reviewed -New protocol changes to be embedded -Joint commissioning of transition support? 	<p>July 24?</p> <p>July 26?</p> <p>July 27?</p>	<p>More families reporting that they are receiving effective support at the right time</p> <p>Improved pathways, governance and finance agreements for joint commissioning at an individual level.</p>