



**Our Children, Our Future**



North East Lincolnshire Council  
**Children's Services**

# **North East Lincolnshire**

## Children in Care and Care Leavers Sufficiency Strategy

**2024 - 2027**





“I walk in, the first thing I see a  
nice clean home, a happy family.  
I hear nothing but the roaring fire,  
I taste banoffee pie.  
I settle on a nice fluffy sofa.  
Most of all I feel warm inside.”



North East Lincolnshire: A place our children can grow up happy and healthy, safe in their homes and communities, with people that love them. We are ambitious for a child's future with a focus on learning and aspiration so they can be the best they can possibly be.

## **Contents**

[Purpose](#)

[Who are Children in Care and Care Leavers?](#)

[Why is this Strategy important?](#)

[Vision: Our Children, Our Future](#)

[Our promise to our children in care](#)

[Overarching Ambitions and Objectives](#)

[Summary of Current Position](#)

[What we know about our children in care](#)

[What we know about our Care Leavers](#)

[Approach to reducing the number of Children in Care in Northeast Lincolnshire](#)

[Ensuring that it is appropriate for a child to be taken into care](#)

[Ensuring that children do not stay in care longer than is necessary](#)

[Approach to Supporting Placements to meet the needs of our children in care](#)

[Developing our Fostering Service](#)

[Developing our Residential Estate](#)

[Developing our Supported Accommodation Offer](#)

[Developing our relationship with commissioned providers](#)

[Independent Fostering Agencies](#)

[Independent Residential Home Providers](#)

[Voice of Children and Young People](#)

[What does success look like](#)

[Delivery Plan](#)

## Background and Context

### Purpose

The statutory guidance on securing sufficient accommodation for looked after children (2010) requires local authorities to take steps to secure, so far as reasonably practicable, sufficient accommodation within the authority's area which meets the needs of its children in care, whose circumstances are such that it would be consistent with their welfare for them to be provided with accommodation ('the sufficiency duty').

The introduction of statute and Home Office transfer expectations including the Unaccompanied Asylum Seeking and Refugee Children (UASC) transfer scheme (Immigration Act 2016), the Concordat on Children in Custody and the local offer to care leavers (Children and Social Work Act 2017) has placed additional duties on councils to provide services and accommodation to those children who need it.

The 2010 guidance identifies what best practice in securing sufficiency would look like and this strategy sets out the strategic intentions of North-East Lincolnshire Council in fulfilling our sufficiency duty towards children in care and care leavers by developing our own local authority provision and by working with external providers and other partners to shape a local market that will meet the needs of children close to where they live whenever this is appropriate.

### Who are Children in Care and Care Leavers?

A child (under 18 years old) is legally 'looked after' by a local authority if he or she:

'Gets accommodation under section 20 of the Children Act 1989 from the local authority for a continuous period of more than 24 hours; is subject to a care order; or is subject to a placement order. Children in Care (CiC) are placed with foster carers, in residential homes or with parents or other relatives (under certain circumstances)'.

'A care leaver is broadly defined as a person aged between 16 and 25, who has been looked after by a local authority for at least 13 weeks since the age of 14, is either currently in care or has left care and has been looked after for a period of time after their 16th birthday.'

### Why is this Strategy important?

The Independent review of Children's Social Care by Josh MacAlister, conducted between July 2021 and May 2022, brought together data on the poor outcomes faced by those who experience care, who as a population face significantly worse outcomes compared to those who do not experience care. These included:

- an estimated 26% of the homeless population have care experience;
- 24% of the prison population in England have spent time in care;
- 41% of 19–21-year-old care leavers are not in education, employment, or training (NEET) compared to 12% of all other young people in the same age group; and
- adults who spent time in care between 1971-2001 were 70% more likely to die prematurely than those who did not.

This strategy cannot, of itself, address all of the attendant issues arising from the above. However, it can make a significant contribution to the well-being of children who are taken into the care of the local authority by ensuring that each and every one of them spends their formative childhood years

in a stable home with a loving family, supplemented by the additional support of professionals as necessary and appropriate.



Figure 1 Our Children, Our Future

### Vision: Our Children, Our Future

North East Lincolnshire Council cares greatly about providing opportunities for children and young people. We are proud of our community and the unique experiences it has to offer; from fishing port opportunities to fine beach landscapes. The Council's geographic area totals 192 square kilometers, and includes three main towns - Cleethorpes, Grimsby, and Immingham – surrounded by several smaller villages.

The 2021 census noted a population of 35,944 children and young people aged from birth to 19 years in the local area, with one in four of these being raised by families on low incomes. North East Lincolnshire council and partners are committed to addressing inequality within the community and improving the lives of our children, young people and their families.

As set out in the [Council Plan](#) and our vision 'Our Children, Our Future', over the next 5 years we remain committed to:

- Working with people who use our services, and their families, to improve service delivery and to support people to live the lives they want to live;
- Engaging our workforce so they can safely practice using evidence-based models, with relationships at the heart of this and supportive and reflective management support;
- Working with communities and partner agencies to build on co-ordinated responses to local need, how we work collaboratively on this important vision for the future and agree what success and outcomes looks like in North East Lincolnshire.



## Our promise to our children in care

The [Corporate Parenting Promise](#) - developed in collaboration with our children in care and care leavers - set outs how we will provide children and young people with the best possible care, support, and access to opportunities to meet their current and future needs. Along with the local offer for [care leavers](#), the promise details what young people in care want from North East Lincolnshire Council to help them become independent adults and reach their full potential.

Our seven promises to children in care and care leavers:

1. **Relationships** – The most important promise for children and young people is having consistent, positive, and trusting relationships and this is the key to everything else, whether that be with staff at NELC, or family members and foster carers.
2. **Where you live** – Ensuring young people in care live with people who are well-trained to support and care for them. This in turn will guarantee young people and children are set up well for their future.
3. **Ready for the future** – Providing the skills young people want to ensure they are ready to enter the adult world. It is so important for young people to have access to practical, emotional, and financial support.
4. **Support for you** – Understanding the needs of children and young people and for our services at NELC to be developed appropriately for their needs and uses. This promise also ensure young people will be involved in the Council's decision making that is relevant to them.
5. **Participation in society** – Recognising how important *participation in society* is for children and young people in our care. It is so important for a range of options to be available, so they feel heard within decision making.
6. **Education, training, and employment** – Understanding, as Corporate Parents, young people's needs around education, training, and employment. Also connecting young people with the best opportunities in the area to get the job the young person wants, to develop their skills and importantly, confidence.
7. **Health and wellbeing** – Promote physical, emotional, and psychological health; and ensuring young people and children have easy access to these services throughout their time in care.

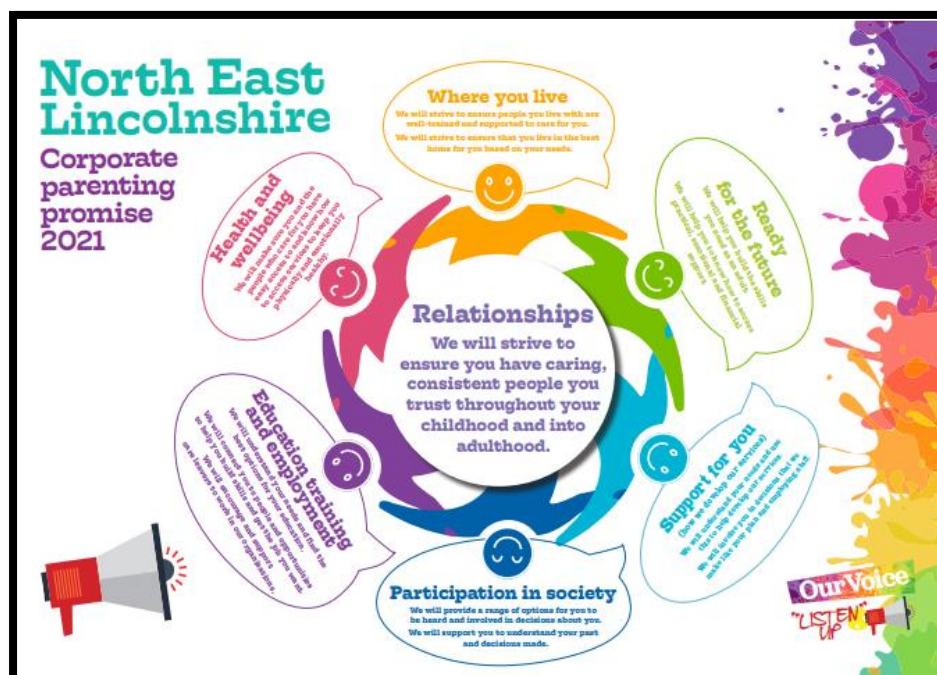


Figure 2 NELC  
Corporate  
Parenting  
Promise Poster

## Sufficiency of Accommodation for Children in Care and Care Leavers

### Overarching Ambitions and Objectives

1. To ensure that the right children and young people are in care at the right time in the right placement to meet their needs; and
2. To support them to successfully transition into adulthood

During the 3-year period covered by this strategy, these ambitions will be realised if:

- The overall number of children in care within North East Lincolnshire is reduced to around 400. This would bring the number of children in care down to a level where the Council is no longer an outlier in comparison to its statistical neighbour local authorities.
- That children in care grow up in stable homes with a loving family, close to their birth family and community, and with the additional support of professionals whenever they need it.
  - Wherever possible, this should be through arrangements involving extended family or family and friends; where this is not achievable, through foster care albeit we recognise a small number of children may present with needs that require a residential care setting – either temporarily or on a longer-term basis.
  - For young people for whom neither residential nor foster care provision is achieving good outcomes, we will always reflect whether our focus should be on investing in additional support with birth families.
- The Council's own foster carers and residential settings provide the majority of the required placement capacity within the local area, with the necessary complimentary provision commissioned in a planned and coordinated way from the private and third sectors. Collectively this will ensure that the Council has access to a variety of placement options that is able to meet the changing needs of children in care and care leavers during the lifetime of this strategy.
- The Council has an adaptable post 16 accommodation and support offer for older children-in-care and care leavers, enabling skills to be enhanced, with local networks and connections being strengthened, removing barriers in accessing and sustaining accommodation, as well as accessing employment and training opportunities that will enable independent living to be achieved.
- The Council develops and delivers a flexible accommodation offer for Care Leavers to access post 18 years old, in addition to ongoing support enable young people to access a variety of housing and support options within their community.

#### A Sense of Home

What we see – Comfort - Sofa, TV, nice bed, blankets, safe food

What we hear – TV, Dog barking, Birds singing, people, normal family life

What we smell – Fresh bread, Air freshener, new smell, a fresh candle

What we touch/feel – Door Sofa Cup warm radiators

What we taste – Bread, new air, new smells



Figure 3 Children in Care Council - A sense of home

In order to achieve these ambitions, we will:

- Focus on early help and edge of care support to prevent children and young people from coming into care; also on enabling reunification with family as early as possible where this is supported by a robust care and safety plan.
- Work to increase our internal foster care capacity and ensure our carers are supported so that we have foster families with appropriately skilled and experienced carers close to home, in order that family relationships, friendships and access to health and education are disrupted as little as possible.
- We will ensure that our residential settings provide a local, high quality, *'family size and style of home'*, which provides emotional warmth alongside professional skills.
- We will make sure that we have an appropriate range of semi-independent accommodation settings that meet the changing needs of older young people in care as they approach adulthood, e.g., for greater autonomy and support rather than care. There will be a flexible accommodation and support offer accessible for Care Leavers over 18 years, that will enable young people to phase the level of support they access once they leave care and as they develop their skills and confidence to live in their communities, whilst being able to access universal and dedicated Care Leavers support offers in NEL.
- At the same time, we know that some of our children and young people will also require care into adulthood so we will develop strong links and pathways to ensure consistent provision for those transitioning to adult social care.

### Summary of Current Position

There are currently 479 children in care in North East Lincolnshire (March 2024). Although this figure has been declining steady for a period of 12-18 months, it remains the case that the Council is an outlier in respect of the overall volume of children in care when benchmarked against regional, statistical neighbour and national data. The aim to reduce the number of children in care to 400 during the 3-year period covered by this strategy represents a reduction of over 20%.

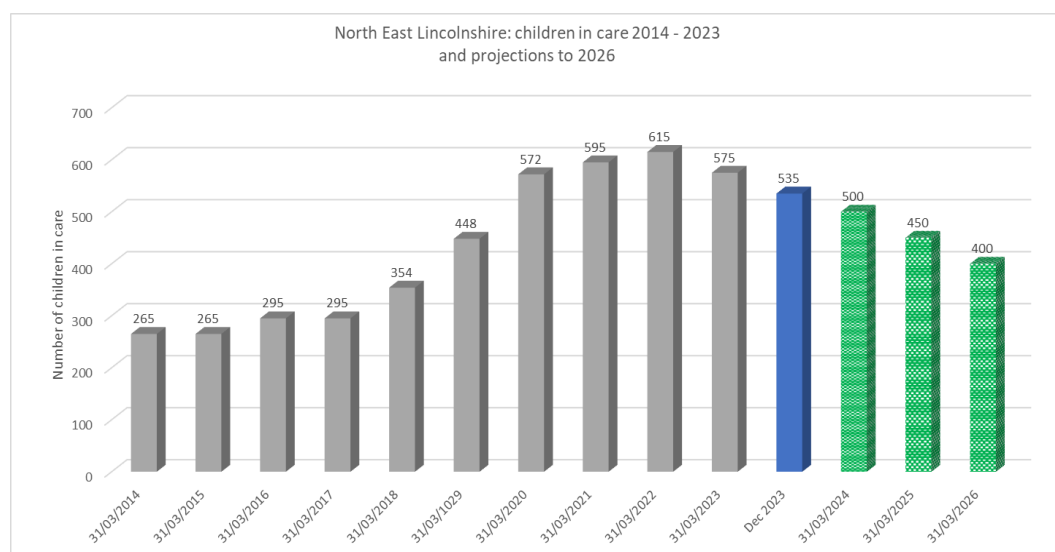


Figure 4  
NEL  
Children in  
Care  
Projections



Data shows a consistent trend whereby there are more children exiting the care system than are coming into care, e.g. during the past 12 months, there were 102 children came into care whilst 197 left the care system. Hence the overall volume of children in care within North East Lincolnshire has been reducing consistently in the last 12 months.

The current placement mix is shown in the table overleaf (highlighted in yellow), together with a comparison as to how this has changed over the past 4 years.

It shows that 54% of children in care are currently living in a setting that is part of the Council's own provision, compared to 60% in 2022 and 75% in 2020. This provides the context for the Council's ambition that its own foster carer and residential settings will continue to provide the majority of homes for children in care.

	Children placed in	Mar-24 (479 CiC)	Mar-23 (557 CiC)	Mar-22 (600 CiC)	Mar-21 (590 CiC)	Mar-20 (560 CiC)
<b>Own provision</b>	Mainstream FCs	144	157	204	203	224
	Connected Carers	86	97	128	160	154
	In-house residential	17	12	25	30	28
<b>Private provision</b>	Independent Foster care	128	141	123	74	45
	Private residential	30	26	17	14	12
	Secure	0	0	0	1	1
<b>Other provision</b>	With Parents	34	61	68	67	57
	Semi-independent	24	32	27	30	33
	Independent living	0	0	0	4	4
	Placed for adoption/FFA	16	31	8	7	2

#### What we know about our children in care

	Age of children				
	Under 1yo	1-4yo	5-9yo	10-14yo	15-17yo
% of children in care	4.4%	17.4%	26.3%	30.1%	21.8%
% in same placement for the past 12 months	48%	57%	84%	71%	72%
% with 3 or more placements in the past 12 months	13%	10%	4%	9%	10%

In the last six months most of the children entering care have been under 5 years old. These children have entered care following families having accessed early help support, and support via a Child in Need Plan or Child Protection Plan. This demonstrates to the Council that the children who come into care, need to come into care.

Equally, most children leaving care during the past six months was also under 5 years old and have been in care for over 12 months. Most of these children left care having been reunified with family members, became adopted, or have Special Guardianship Orders in place with a relative carer.

#### [What we know about our Care Leavers](#)

North East Lincolnshire currently has 415 entitled care leavers, with 87% open to accessing care leavers support via the Council. Of these, 286 care leavers having an open referral to access support are under the age of 21 years old. Some 40% of care leavers are engaged in some form of education, training or employment, whilst 72% of care leavers are living in suitable accommodation, including independent accommodation, living with relatives, living in semi-independent accommodation and living with former foster carers.

All children in care are allocated a Careers Adviser in Year 11 to access support with post 16 Education, Employment and Training (EET) options. EET Practitioner support is also offered to care leavers aged 16-25, via the New Futures Team.

## Key Approaches

### Approach to reducing the number of Children in Care in Northeast Lincolnshire

The Council will take a two-pronged approach towards ensuring that children enter only when it is necessary, and, when they do come into care, to ensure they experience safe, stable, and loving placements.

#### Ensuring that it is appropriate for a child to be taken into care

The '[Prevention and Early Help Partnership Strategy](#)', sets out how the North East Lincolnshire safeguarding partnership works to ensure that children, young people and their families receive appropriate support at the right time. There are a number of services aimed at preventing the escalation of need and supporting children to stay with their families, where it is safe to do so:

- **[Team Around the Family \(TAF\)](#):** supporting children, young people and families at the earliest opportunity, bringing together all support and services within the local area to promote a *whole family* approach.
- **[Early Help and Family Hubs](#):** providing local advice, guidance, and support to families, in a way that feels accessible to them.
- **[Start for Life](#):** recognising that the first 1001 days of a baby's life are the most crucial to their lifelong development. We are therefore developing a comprehensive *Start for Life Offer* that will include advice, guidance, support and services for babies and their parents / carers to ensure everyone gets the best start for life.
- **[Adolescence](#):** supporting young people to turn away from anti-social behaviour and crime, to reduce risks of being exploited or missing from home, prevent substance use and recognise early intervention to support a young person's emotional wellbeing.
- **[Special Educational Needs and Disability \(SEND\) Partnership](#):** reflecting the breadth of services across education, health, early help and social care who work with children who have emerging or identify SEND.

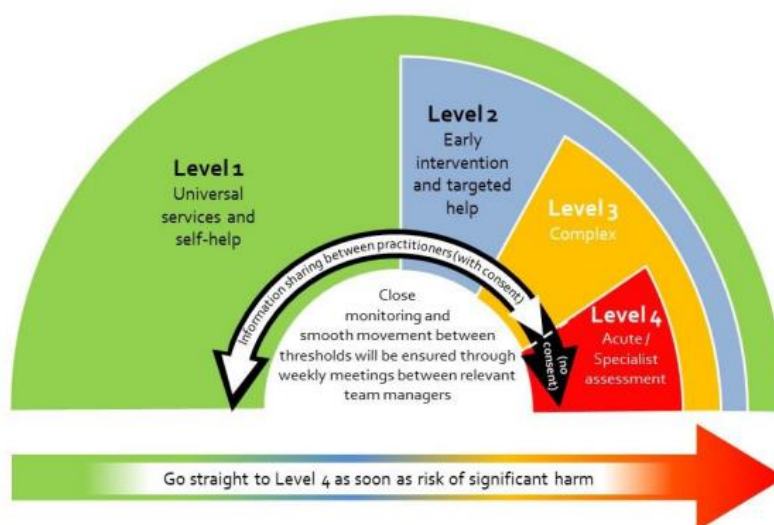


Figure 5 NELC Levels of Support

As well as seeking as early as possible to prevent the escalation of need, the Integrated Front Door (IFD) will ensure that the Council and its partners correctly apply thresholds to ensure that children, young people and families receive the right support first time.



### Ensuring that children do not stay in care longer than is necessary

The Council actively supports a range of different routes for achieving permanence, based upon the specific needs of the individual child, young person and family:

- **Reunification:** working with birth families to address issues that led to the child being taken into care, e.g. via the Family Group Conferencing model that collectively works with parents, professionals, and families to resolve the challenges they face and empower people to change their own lives.
- **Kinship Care:** placing a child with relatives or close family friends when they cannot live with their parents, thereby allowing the child to maintain connections with their family and community while receiving care in a familiar environment.
- **Special Guardianship Orders (SGO):** a legal arrangement that gives a relative or other *significant person* parental responsibility for a child until they turn 18. The Council has worked to reduce the time taken for carers going through the SGO process, as well as introducing a new financial pathway for SGOs
- **Child Arrangement Orders (CAO):** a CAO decides where a child lives and will give the person parental responsibility.
- **Long-term fostering:** In some cases, fostering can become a long-term arrangement if adoption or SGOs are not preferred. Long-term fostering provides stability and care within a foster family for the child until they reach adulthood.
- **Adoption:** North East Lincolnshire Council is part of the 'One' Regional Adoption Agency, which provides adoption services for five local authorities across the North and Humber region.

Alongside these routes to achieving permanence, young people who cease to be looked after by the Council when they turn 18 years old are supported as Care Leavers to thrive independently.

The Council performs well in keeping in touch with their care leavers, in line with national and comparator groups with Statistical Neighbours. For those who cease to be looked after when over the age of 16, the overwhelming majority have continued to live in the same home after leaving care, whilst approximately half of care leavers aged 16-18 years are in touch with the Council's New Futures Service, with just under half of them meeting the eligible criteria for Care Leavers support.

"it's not about the place its about the people in it"



Figure 6 Child in Care Council Quote

The Council also provides suitable accommodation options for its care leavers, although it is acknowledged that this offer can be strengthened by improving how our systems and services work together to support Care Leavers to sustain their suitable accommodation options. Improving this connection will enable Care Leavers to access universal local housing related support packages to enhance and improve the skills, independence and strengths young people need as they become young adults. Our offer for Care Leavers needs to be shaped by our values of holding high aspirations for young people, and as a Corporate Parenting provide opportunities for young people to learn and gain experiences within our Organisation and alongside our Workforce.

## Approach to Supporting Placements to meet the needs of our children in care

### Developing our Fostering Service

The Council is committed to providing as many loving homes as possible for children in care and has been working to increase our foster care capacity through recruitment and retention activities.

Taking on board feedback from our foster carers, the Council will be trialling a number of different campaigns to help make our foster carers feel valued and supported to ensure we retain as many of our incredible carers as possible. At the same time, the Council will continue with our recruitment drive as we start to target our recruitment based on a new approach which looks at the values of prospective carers (based on national research) and the types of campaigns and messaging have been shown to resonate most with them.



Figure 7 Fostering NEL

In line with this new approach, we have been reviewing our digital communications and marketing material so that we are able to make the content as clear, concise and easy to access as possible for those who need it.

Collaborating with a small group of our foster carers, we are also trialling mapping their strengths and capabilities so that we can match children and young people with carers that can best meet their needs.



Figure 8 The voice of Fostering Families - How we feel

### Developing our Residential Offer

The Council successfully operates and manages 6 mainstream children's homes which offer the love, care and support for some of our most vulnerable children. Being located within the North East Lincolnshire area allows the children living at these homes to remain close to their families, their local school, and network of friends. All of which is a priority for us as Corporate Parent as we recognise the importance of these crucial bonds. We recognise the incredible contribution our partners make in this, and we plan to launch a multi-agency approach to how our children in care are prioritised, have their health, education and social needs met to allow them to flourish.

It is our ambition that the children who come to live in one of our residential homes do so for a limited amount of time and, subject to it being part of their wider care plan, that they may go on to live in a family, whether this is through foster care or possibly with their birth family or a relative from their wider family network. We will introduce clear expectations around our planning for children's day to day lives and permanence so that children know their plan, feel listened to about their future and understand the reasons decisions have been made.

Moving forward, we have ambitions to utilise the space within our residential estate in the most effective way, so we can offer more children the home environment they deserve. It is also crucial that we have clear accountability on how money is spent, so we want to ensure we are providing outstanding care that is at the same time cost effective. Thus, we will revisit bed space and capacity as well as being clear on age groups for each home and creating a clear profile of need alongside improved admission and matching processes to ensure children are being given the best chance at living happily. We plan to invest in our workforce as well, to enable staff to work in a trauma informed, therapeutic parenting approach, so we can offer children a loving home.

### Developing our Supported Accommodation Offer

For those children that may live in a children's home until they can begin to live independently, we will continue to support them into their adulthood through post 16 accommodation options, prepping for adulthood skills and supporting them to have the ambitions and aspirations to be the best they can possibly be.



*Figure 9 Children in Care Council Quote*

The Council successfully operates and manages two supported accommodation projects delivered within the borough, which are going through the registration process with Ofsted. A total of 23 supported accommodation places are provided, including one assessment place. Both projects provide a mixture of shared housing and self-contained one-bedroom flats. The projects enabled young people to live close to their support networks, including family and friends, whilst offering



ongoing support to all, enabled these young people to build on their skills to live independently when they leave care. Regular access and time with a dedicated and well-trained team of support workers is accessible to all young people living in supported accommodation. This dedicated support team enables young people to create ambitions and aspirations, that they can achieve enabling them to be the best they can possibly be.

It is our ambition that those who live in supported accommodation feel listened too, they will have clear expectations about the planning process they will be involved in for their future and understand how they will be supported on their journey into independence when the time comes for them to leave care. Young people will co-design their support packages with their Staying Close worker, who will walk alongside them throughout their journey and into adulthood. This consistent support will be there flexible to the needs of the young person, providing space to grow, testing their ability to increase their independent living, within a safe environment.

### Developing our relationship with commissioned providers

The Council is part of the Yorkshire and Humber Children's Services Commissioning Partnership, a group of local authorities across Yorkshire and The Humber that undertake a co-ordinated approach to the commissioning of external placements for children. Commonly known as the "White Rose partnership", the Council commissions Independent Fostering Agency and residential care placements via the White Rose partnership, alongside specialist education placements at Independent Schools and Colleges for SEND.

Moving forwards, the Council will continue to be an active partner in the White Rose partnership, both at a regional level and through the East sub-regional group. We will continue wherever possible to make placements with approved providers via the White Rose partnership and work collaboratively with the other local authorities to share expertise and learning, e.g. around a shared approach to quality assurance and market management (including price negotiation) across Yorkshire and The Humber.

### Independent Fostering Agencies

Over the last 2 years the Council's children in care have lived with foster carers managed by 37 different IFAs. We commission placements most regularly with 3 agencies, as they have a high number of foster carers living within North East Lincolnshire and surrounding local authorities.

Moving forwards, we will continue to adopt and adapt our ways of working to maximise our ability to identify the best placements for our children in a challenging market. We will develop further our relationship with those agencies and organisations that are able to provide local foster care homes, whilst also recognising that we may sometimes require access to more specialist and/or out-of-county placements when this is in line with a child's assessed needs and care plan.

We will also continue to develop our approach to placement stability, ensuring that our commissioning and social care teams are always communicating effectively with external partners and respond to needs to prevent unnecessary placement break down.

### Independent Residential Home Providers

Over the last 2 years our children in care have lived in homes operated and managed by 28 different independent providers. The overwhelming majority of these homes are outside of North East

Lincolnshire; indeed, there is currently only one privately managed Ofsted-registered children's home located within the North East Lincolnshire local authority area.

Through our commissioning and social care teams, the Council aims to build effective working relationships with commissioned providers to ensure there is a joined-up approach to providing a package of support to meet the children's needs and help them achieve their outcomes. And, wherever possible and in line with their care plan, to step down the young person into a family setting or to move on to independence as appropriate.

Moving forwards, we will continue proactively to liaise with provider organisations that are planning to open provision within North East Lincolnshire to ensure that we can work effectively with them to meet the needs of our children and young people whose care plan suggests they would benefit from living in a residential children's home.



The voice of Children and Young People in North East Lincolnshire

Our Voice, Listen Up

#### What happens in a home to make it feel like home

"feeling loved and cared for and treating me normally"

"not being treated differently to others living in the house"

"we don't want to feel harassed, caring doesn't mean being on at you all the time, allowing us space and time to go at our pace does"

"celebrating special occasions and things I do well"

"make sure you know our likes and dislikes, not just from the file as things change, check this with me so that the things you might do to make me feel welcome are things that actually do feel thoughtful"

#### The spaces we live in

"allow me to have my own space and make it feel like my space, not just a box with a bed in it. This may be the only space I have that is for me and just me"

"we should have new bedding, pillows when we move somewhere new."

"new pyjamas are always nice"

"If you are staying somewhere you should be allowed to decorate your room in a way you would like to make it feel like your own"

#### Moving home to birth family after being in care

"This should be graduated to get used to the new space, like visiting then staying over a night, then a few nights then moving back"

"Make sure that the space for us we are moving back to is right for us, we might have moved out a long time ago and changed since"

"check how things are going and support us when we go back to living with family"

#### What could make being looked after better?

"No more time limiting on my tech."

"Nothing, they look after me right"

"To know I'm staying till I'm an old man please."

"Everything is fine, I have got a Nintendo."

"school so i can make more friends."

"LATER BEDTIME and more hugs and friends"

Children Looked After – Voice and Influence Survey feedback (April – December 2023)



**Children and young people tell us  
they feel happy where they live**

**Children and young people tell us  
they have the sorts of food and  
drinks they like in their home**



**Children and young people tell us  
they never feel bullied or picked  
on in their homes**

**Children and young people tell us  
they feel safe where they live and get  
on well with those caring for them**



**Children and young people tell us  
things are very good or excellent at  
school**



The voice of our Fostering Families

Figure 10 Ambitions we believe are important for Children and Young People



Figure 11 Our top three priority outcomes for Children and Young People

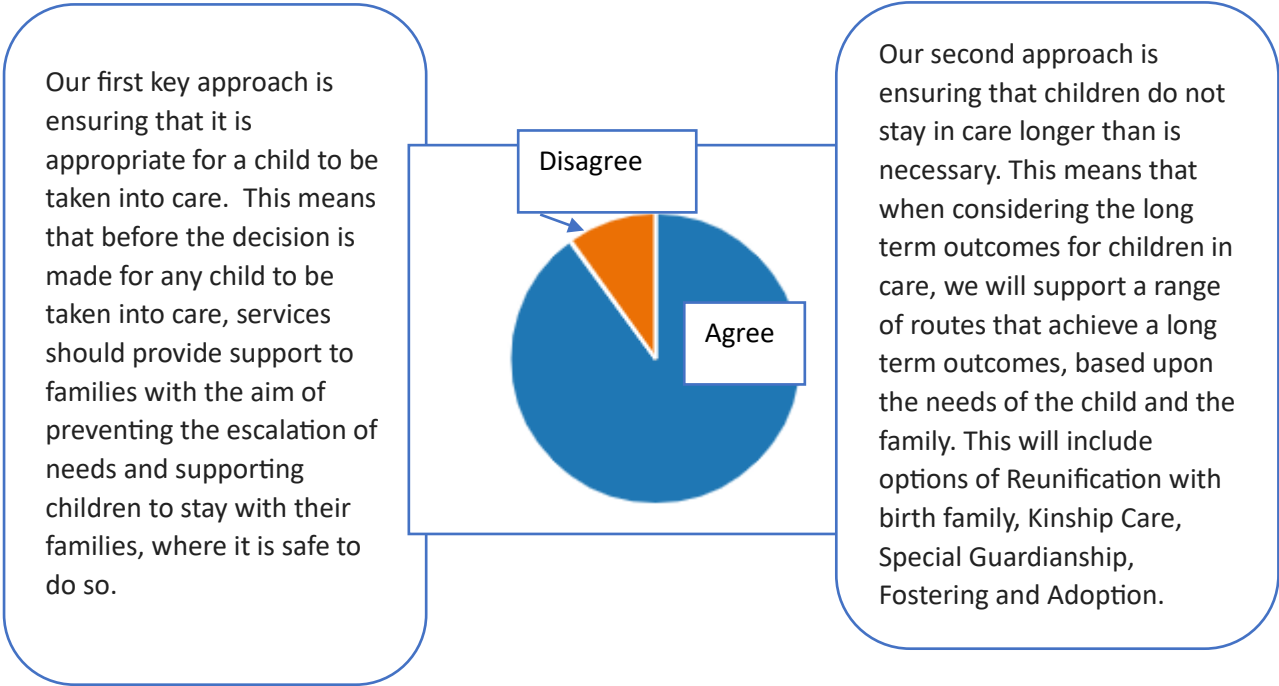


Figure 12 Key Approaches Feedback

### What does success look like

Given the context for this strategy is framed by the Council's overarching objective to reduce the number of children in care within North East Lincolnshire to 400 over the coming years, achieving this has to be the primary measure of success and it is essential that the resources continue to be committed to achieve this.

In placement sufficiency terms, the key challenge over the 3-year period covered by this strategy will be as much about achieving an appropriate 'placement mix' as it is about general challenge of overall placement capacity. This 'mix' might present itself in a number of different ways, i.e. maintaining an appropriately healthy proportion of foster care placements (versus, say, residential); achieving a majority of placements managed directly by the Council (across foster care, residential and supported accommodation).

Whilst this might imply the Council will be relatively less reliant than many Authorities on commissioning a high volume of placements from the private sector, the need to establish and maintain a strong relationship with the private and voluntary sectors will be crucial for the Council so that it can commission a complementary range of placements from the private sector that might, for example, meet a set of more specialist needs that will not be met from its internal estate. Or, from time-to-time- simply to meet a spike in demand for placements that relieves pressure on internal placement services.

The following table gives an indication as to what the high-level placement mix might look like if the Council's plans and strategies come to a successful fruition over the next 3 years, whilst the table overleaf sets out a more detailed set of outcomes and measures of success.

<b><i>Provision Type</i></b>	<b><i>Children in Care (500)</i></b>	<b><i>Provision Type by % (Mar 24)</i></b>	<b><i>Children in Care (400)</i></b>	<b><i>Provision Type by % (Mar 27)</i></b>
<b><i>Own provision</i></b>	267	53%	267	67%
<b><i>Private provision</i></b>	156	31%	83	21%
<b><i>Other provision</i></b>	77	15%	50	13%

Outcomes	Our Measures of Success
More children experiencing stability within families	<ul style="list-style-type: none"> <li>• % of children experiencing 3 placements and % of children who have been in care for 2.5 years+ living in the same home for the last 2 years.</li> </ul>
Children experience sustained and meaningful relationships	<ul style="list-style-type: none"> <li>• % of children experienced 2 or more changes of social worker over the previous 12 months.</li> </ul>
Children in care are able to be part of their communities in North-East Lincolnshire	<ul style="list-style-type: none"> <li>• % of the CIC population were placed out of the area vs national figure</li> <li>• All care leavers who live in the community live in suitable accommodation with support in line with their needs</li> </ul>
The majority of care leavers are in education, employment and training and this continues to improve	<ul style="list-style-type: none"> <li>• Care Leavers aged 19-21 years in EET % vs National figure % and Statistical Neighbours</li> <li>• 17 and 18 year olds in EET % vs National figure % and Statistical Neighbours</li> </ul>
Very low numbers of children in care are engaged in criminal behaviour	<ul style="list-style-type: none"> <li>• % of children in care over a year received a final warning or conviction vs National figure % and Statistical Neighbours</li> <li>• Children in Care continue to make more progress in Reading and Writing between Key Stage 1 and Key Stage 2 than the national average.</li> </ul>
Children progress to permanence through adoption if it is the right thing for them whatever their age and needs	<ul style="list-style-type: none"> <li>• 3-year average timescale from entering care to placement vs National figure % and Statistical Neighbours</li> </ul>
More children progress from care to permanence	<ul style="list-style-type: none"> <li>• % of children leaving care did so to legal permanence via adoption, SGO or CAO. vs National figure % and Statistical Neighbours</li> <li>• % returned to their families and % remained with their foster carer as a 'Staying Put' arrangement</li> <li>• Children in care and care leavers consistently say that they feel listened to and can articulate any issues or concerns.</li> </ul>



North East Lincolnshire Council Children in Care and Care Leavers Sufficiency Delivery Plan		
Delivery Area	Area of Focus	Targets and Milestones for Delivery
<b>Sufficiency for Children in Care</b>	The overall number of children in care within North East Lincolnshire is reduced to around 400 by 2026	<ul style="list-style-type: none"> <li>Children in Care Rate per 10,000 decreases</li> <li>Regional Children in Care Rate per 1,000 decreases</li> <li>Rates of Children in Care grouped by age and gender</li> </ul>
<b>Sufficiency for Children in Care</b>	That children in care grow up in stable homes with a loving family, close to their birth family and community, and with the additional support of professionals whenever they need it	<ul style="list-style-type: none"> <li>% of Children in Care living within the borough increases</li> <li>% of Children exiting Care with a legal order or returning to family increases</li> <li>% of Children in Care living within in-house provision increases</li> <li>% of Children in Care living with in-house fostering families increases</li> <li></li> </ul>
<b>Sufficiency for Children in Care</b>	The Council has access to a variety of placement options that is able to meet the changing needs of children in care, including an adaptable post 16 accommodation and support offer for older children-in-care and care leavers	<ul style="list-style-type: none"> <li>NEL Placement Provision comparison, with increasing utilisation of in-house provision being used</li> <li>The number of in-house fostering families increases</li> <li>Residential homes utilisation is consistently achieving 85% occupancy rates</li> <li>Increase the number of young people aged 16 years old who are enabled to live in Supported Accommodation</li> <li>Continue to improve stability performance: 3 or more placement moves to be in line with or less than the national average</li> <li>Continue to improve stability performance: Children looked after for at least 2.5 years and aged under 16 who have been in the same placement for at least 2 years to be in line with or less than the national average</li> </ul>
<b>Sufficiency for Care Leavers</b>	Adaptable post 16 Care Leavers offer is developed and launched, to include accommodation and support.	<ul style="list-style-type: none"> <li>Develop a Care Leavers offer with Care Leavers by September 2024</li> <li>Launch and deliver a NEL Care Leavers offer by October 2024</li> <li>In partnership with the Housing Partners embed a transitional pathway that supports young people into accommodation that meets their needs in our community.</li> <li>% of Care Leavers over 16 years old who remain in touch &gt;95%</li> <li>% of Care Leavers over 16 years old who reside in suitable accommodation &gt;95%</li> </ul>

		<ul style="list-style-type: none"> <li>• % of Care Leavers over 16 years old who are accessing Education, Employment or Training &gt;70%</li> </ul>
<b>Sufficiency for Children in Care</b>	An early help and edge of care support offer is in place to prevent children and young people from coming into care; which can also enable reunification with family as early as possible	<ul style="list-style-type: none"> <li>• &lt; The number of children entering care, year on year</li> <li>• &gt; The number of children exiting care, before 16 years old</li> <li>• &gt; The number of children exiting care, who are reunified with family</li> <li>• &lt; The length of time children under 16 years old are in care</li> </ul>
<b>Sufficiency for Children in Care</b>	Increase our internal foster care capacity and ensure our carers are well supported to provide quality homes for children and young people	<ul style="list-style-type: none"> <li>• Develop and deliver a Fostering Recruitment and Retention Strategy by September 2024 to include; <ul style="list-style-type: none"> <li>○ Fostering Recruitment</li> <li>○ Fostering Training and Development</li> <li>○ Fostering Networks and Support</li> </ul> </li> <li>• &gt; Foster Carers utilisation</li> <li>• &gt; The number of children “Stepping Down” from Residential Placements to Fostering</li> <li>• &gt; Increase the number of Fostering Families who can provide Staying Put options</li> </ul>
<b>Sufficiency for Children in Care and Care Leavers</b>	To ensure the organisation continues to monitor the progress of sufficiency of placements in NEL and remains agile to future changing demands in providing a variety of placement options for Children in Care, and accommodation options with support packages for Care Leavers.	<ul style="list-style-type: none"> <li>• Establish a reporting dashboard under the delivery of the Corporate Parenting</li> <li>• Review the current governance structures to ensure an agile approach can be applied to meeting future demands in providing a variety of placement options</li> <li>• For the Delivery Plan to be reviewed on an annual basis, with presentation to the Corporate Parenting Board on progress of delivery until the next Sufficiency Strategy is required to be developed</li> </ul>



## North East Lincolnshire

### Children in Care and Care Leavers Sufficiency Strategy

2024 - 2027

