

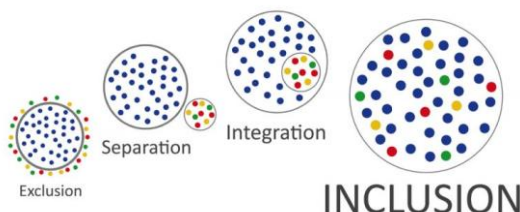


NORTH EAST LINCOLNSHIRE VIRTUAL SCHOOL NEWSLETTER AUTUMN TERM 2024

MEET THE VIRTUAL SCHOOL SLT

Thank you to our education establishments for the support provided during the start of the new school year. NEL's Virtual School are committed to working in partnership with you to ensure the best outcomes for our children and young people. Please do invite us into your settings to build and strengthen relationships and discuss how we can move forward collectively as one team wrapping around our children. Best Wishes, Michelle, Avril & Jodi

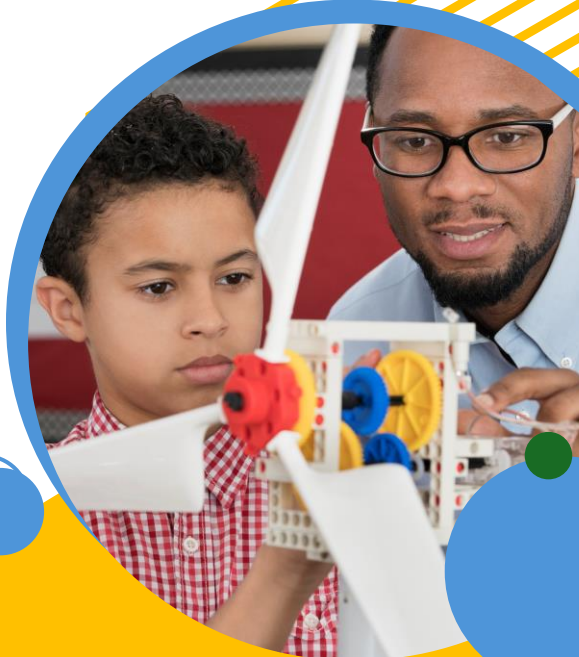
Michelle McMahon, Virtual School Head
michelle.mcmahon@nelincs.gov.uk
Avril Newton, Deputy Head for Standards
avril.newton@nelincs.gov.uk
Jodi Parkin, Deputy Head Extended Duties
jodi.parkin@nelincs.gov.uk



VIRTUAL SCHOOL TRAINING

Thank you to the 96 Educational Professionals from across our borough and beyond, who attended our **Virtual School Training for Headteachers, Designated Teachers and Designated Safeguarding Leads** over the course of these past two weeks. Your time and commitment in supporting positive outcomes for our children and young people is invaluable. The training focussed on setting new expectations, the new Personal Education Plan layout, the new **Pupil Premium Plus Guidance** released in June 2024 (available on our website) and how the local authority must demonstrate how the PPG+ funding is raising the attainment and aspirations of children in care.

Further training sessions will be advertised after half-term and the training will be available to access on our website. If you have not had the chance to familiarise yourself with the new PPG+ Guidance we would urge you to do so, or discuss with your Inclusion Officer.



OUR CHILDREN CAN BE OUR GREATEST TEACHERS
IF WE ARE HUMBLE ENOUGH TO RECEIVE THEIR
LESSONS.

Bryan McGill





"WHEN A FLOWER
DOESN'T BLOOM YOU FIX
THE ENVIRONMENT IN
WHICH IT GROWS, NOT
THE FLOWER."
Alexander den Heijer

COHORT NUMBERS

409	Total Children in Care Aged 3-18
233	Children in Care In Area School
176	Children in Care Out of Area Schools
122	Children in Care with an EHCP
542	Child in Need Aged 5-17
144	Child Protection Aged 0 - 16
65	Kinship Care Aged 0 - 18

PERMISSION TO BE PROUD

- ❖ Child in our Care, age 12 is now in school with 100% attendance following a year's absence.
- ❖ Child in our Care, age 15 is now in school with 100% attendance following a year's absence.
- ❖ Child in our Care, age 10 is thriving new school and able to share his experiences during PHSE.
- ❖ Young Person in our Care, age 17 has achieved 100% attendance since starting college, showing resilience and striving to re-sit her GCSE's.
- ❖ Child in our Care, age 14 who was a long-term non-attender returned to Education in full uniform, successfully accessing Thrive Program to help settle.
- ❖ Child in our Care, aged 15 who has not engaged in Education since September has returned to school for one hour each morning.
- ❖ Child in our Care, age 7 was accessing primary specialist EHCP provision for 1.5 hours per day. Now accessing a full-time table with 100% attendance in secondary provision, building great relationships and making good choices.

GENERAL INFORMATION

Please ensure your children are coded correctly on the Department for Education, especially when they move between CIN/CP/CIC/CPIC. A deep dive earlier in the year identified over 140 children incorrectly coded.

As per DfE statutory guidance a child previously in care (PLAC - DfE terminology) is a child who was in the care of the local authority at the point at which they were adopted, made subject to a Special Guardianship Order (SGO), or a Child Arrangements Order (CAO). When claiming the Pupil Premium Grant on the October census please be aware children who have returned to the care of their parents are not identified as PLAC.

If you have a concern regarding one of our children with a social worker (those at CIN/CP), a child previously in care or a child in Kinship Care the Virtual School are here for advice, guidance and signposting. Please join one of our Education Clinics (accessible through our website) or contact our Deputy Head (Extended Duties), Jodi Parkin.



What divides us
pales in
comparison to
what unites us!

Edward Kennedy



KEY DATES

**28th October - 8th November
Corporate Parenting Fortnight**
Across the authority teams are coming together to host a variety of events aimed at our children in care and care leavers culminating in the YOUUnique Awards

1st November Halloween Party
Education and Fostering are working together to host a Halloween Party for children in our care and care leavers.

**6th November Corporate
Parenting Partnership Event**
Children's services will launch the new corporate parenting promise, listen to the views and experiences of our children and young people and hear from a renowned national speaker.

8th November YOUUnique Awards
Thank you to all those who took the time to nominate our children in care and care leavers. The panel are gathering as we speak to choose the winners who will be announced at the awards ceremony.

**20th November 2024 Additional
Funding Requests Deadline**
Please ensure any additional funding requests as shown on the PEP document are completed and returned by this deadline for payment in January.

THE POWER OF POSITIVE LANGUAGE

Within NEL Children's Services we have been considering not only the how the language we use impacts on adults who gain access to their records, but how the positive use of language can reframe negative experiences for our children and young people in the present. Some useful documents available to help you start to think about this in your own settings are **Language That Cares** published by TACT, and **Mind Your Language** published by CAFcass.

"We are not mistakes on pages, we are awesome novels with unorthodox beginnings." (TACT ambassador Solomon OB)

ATTENDANCE

The new guidance, **Working Together to Improve School Attendance** became statutory in August 2024 and can be found on the Virtual School website.

Should attendance of our Children in Care fall below 95% please contact your Inclusion Officer at the earliest opportunity to agree suitable support plans.

SHOUT OUT'S

Thank you to **Middlethorpe Primary Academy** for supporting one of our children previously in our care. The collective efforts of various teams who came together to not only create a support plan, but a plan B to avoid permanent exclusion was partnership working at it's best!

We would like to say a huge thank you to two of our Designated Teacher's who are moving on to pastures new, **Emily Burford from Lincoln Carlton Academy and David Akers from Ward Jackson School**. Their advocacy and support to ensure the best outcomes for our children in care has been unwavering. We wish you well in your new roles.

And finally, a shout out for **Joseph Norton Academy** in supporting one of our young people to access full time education.