

Inside North East Lincolnshire's **community guide FREE** to every home



# North East Lincolnshire **Stronger Together**

**Stronger Economy: Stronger Communities.  
Together we can be stronger.**

**Autumn/Winter 2024**

**Inside:** Your festive events guide: join our fostering family:  
Family Hubs news: vital winter help & advice: help with your money:  
keeping safe & warm: learn new skills: ways to stay well & healthy...**and loads more!**



# Welcome

Welcome to our autumn/winter household brochure, and once again it's packed with useful advice for everyone.

I want to use this introduction to thank everyone who took part in the consultation on the proposed devolution deal for Greater Lincolnshire. We now have the go-ahead from Government for the Greater Lincolnshire Combined County Authority, (GLCCA), which will be formed ahead of the Mayoral election next May.

For Greater Lincolnshire there is a total investment fund of £720m over the next 30 years to invest in some key areas that will benefit us all. In fact, initial funding is already being used to support plans for 130 new homes on Alexandra Dock (alongside Garth Lane bridge) and for a new Grimsby Town Centre Transport Hub. I want to reassure you too that the



Left to right: Leaders of North Lincolnshire Council, Lincolnshire County Council and North East Lincolnshire Council met at Lincolnshire Day celebrations.

GLCCA does not mean the loss of your local services, delivered by local people – North East Lincolnshire Council will continue to provide these in the same way it does now.

Please do go to [www.nelincs.gov.uk/devolution/](http://www.nelincs.gov.uk/devolution/) for all the details – and

let's all look forward to a future which will see local people making the right decisions in the right areas.

**North East Lincolnshire Council Leader, Cllr Philip Jackson.**

(Portfolio Holder for Economy, Regeneration, Devolution & Skills).

## Meet your Cabinet

Together they make key decisions, as well as having individual responsibility for services.

### Cllr Jackson is supported by his Cabinet colleagues.

**Deputy Leader Cllr Stan Shreeve**  
(Portfolio Holder for Health, Wellbeing and Adult Social Care)

"With my Portfolio responsibilities, I am pleased to see advice in this brochure for people this winter. There are many services out there to help so please do use them."

**Cllr Margaret Cracknell**  
(Portfolio Holder for Children and Education)

"As we work to improve the lives of our young people, I would like to thank all those who are supporting us. On pages 6&7 you will find details of two very important areas of work - please take a look."

**Cllr Hayden Dawkins**  
(Portfolio Holder for Culture, Heritage and the Visitor Economy)

"Just look at the page next to this one – there's so much going on in the run-up to Christmas and that's great as we want families to enjoy themselves locally."

**Cllr Stephen Harness**  
(Portfolio Holder for Finance, Resources and Assets)

"We work with partners to offer support for all. HEY Credit Union, paying household bills, and ways to keep homes warm for less are all outlined in this brochure."

**Cllr Ron Shepherd**  
(Portfolio Holder for Safer and Stronger Communities)

"In this brochure, you will read about the work of our Police and Crime Commissioner. Keeping our area safe

is a partnership effort – we are making a difference, and we are determined to continue."

**Cllr Stewart Swinburn**  
(Portfolio Holder for Housing, Infrastructure and Transport)

"We are working hard to keep our borough moving in the future. Road works are frustrating, but it is vital we keep all our road users safe, and our highways fit for purpose. With my housing responsibilities, I welcome the support for residents that is outlined in this brochure."

**Cllr Henry Hudson**  
(Portfolio Holder for Environment and Net Zero)

"As a council we will continue to drive forward actions that improve our environment for everyone. This is a vital part of our work in the years ahead."



# 'Tis the Season to be Jolly ...

With lots of Christmas events and activities in North East Lincolnshire filling the diary, discover what's on and all the fun things you can see, do and enjoy this festive season.

The Discover North East Lincolnshire team have created new Christmas pages on their website so you can sit back and plan your activities for all the family, including where to go for: **festive afternoon teas, local real trees, Christmas markets, festive pantomimes and performances, local food and drink, where to see Santa, local shopping** and much more.

For all the details plus lots more fun and festive information, go to: [www.discovernortheastlincolnshire.co.uk/christmas](http://www.discovernortheastlincolnshire.co.uk/christmas).



Kick off the festive season at **Great Grimsby's Christmas Festival** event on Saturday 23 November.

Join us from 12 noon for our outdoor Christmas Market featuring gifts and crafts, refuel with tasty sweet treats and delicious street food from our vendors. Watch festive entertainment at the main stage throughout the day including live music and performers. Wander down to Riverhead Square for more fun and entertainment. Then stay around for the parade and watch the Christmas tree lighting followed by great live music. In Cleethorpes, the Christmas Tree lighting event is on Friday 29 November and is located outside St Peter's Church.

## Don't miss our Weekend What's On Guide

Every Thursday teatime we post our weekend guide on our social media channels, so do follow us on Facebook or Instagram. Or pop over to our dedicated page on our website (found under the 'What's On' section).

[https://www.](https://www.discovernortheastlincolnshire.co.uk/whats-on/weekendguide/)

[discovernortheastlincolnshire.co.uk/whats-on/weekendguide/](http://discovernortheastlincolnshire.co.uk/whats-on/weekendguide/)

## Get our monthly emails



Sign up to receive emails from Discover North East Lincolnshire. As a subscriber you'll get regular updates from us about events taking place, things to do, competitions, news and more. Sign up today, you don't want to miss out!



### DIARY DATES

**Saturday 16 and Sunday 17 November**  
OE Artisan Market, Healing Manor Hotel

**Tuesday 19 November**  
Fairytale in New York, Grimsby Auditorium

**Thursday 21 November**  
Christmas Memories, Grimsby Auditorium

**Saturday 23 November**  
Great Grimsby Christmas Festival

**Thursday 28 November**  
Starsailor, Docks Academy

**Friday 29 November**  
Cleethorpes Tree Lighting, St Peter's Avenue

**30 November to 7 December**  
One Man, Two Guvners, Caxton Theatre

**Sunday 1 December**  
Christmas Craft Market by Anything Goes, Beachcomber

**Santa Specials at Cleethorpes Coast Light Railway**  
During December - Saturday 7th, Saturday 14th, Sunday 15th, Saturday 21st, Sunday 22nd and Tuesday 24th

**7 December to 29 December**  
Dick Whittington meets Pirates of the Caribbean Panto at Grimsby Auditorium

### Saturday 7 December

The Big OE Makers Market Christmas Finale, Grimsby Minster

### Sunday 8 December

RNLI Reindeer Run, Cleethorpes Seafront

### Saturday 14 December

Grimsby Philharmonic Society's Christmas Concert, Grimsby Minster

### Opens 14 December to 30 December

The Wizard of Oz, a TaleGate Panto at Parkway Cinemas

### Friday 20 December

Grimsby Farmers Market, Victoria Street

### Friday 20 & Saturday 21 December

Benidorm Tom's Christmas Party, Yardbirds Rock

### Saturday 21 December

Fresh Catch 6: X-mas Special, Docks Academy

### Tuesday 31 December

Slade UK, Yardbirds Rock

**Lots more on our website**



# Spades in the ground!

Early 2025 will see lots of change in our town centres.



Here's just a snapshot for you of the progress we're making on some key schemes.

## Getting around and about

In September, two transport-based projects that will change the way we move around Grimsby Town Centre were given the green light.

The Abbey Walk car park was built in 1969 by Holst & Company of Scunthorpe at a cost of approximately £200,000.

Whilst a key asset for the town centre, the car park was closed in May this year, after structural defects were found. This was water ingress into key structural supports, making the car park potentially unsafe to use.

It has now been approved to proceed with plans to demolish the car park, and replace it with a 120-space surface car park, but with the capability in the foundations of being built on in future years if needed.

We are already talking with the artist, Harold Gosney, who created the sculptures on the wall of the car park to see whether these can be saved for the future.

Separately, the outline plans for a new transport hub off Osborne Street in the town centre were also approved. It will sit behind the current vacant units on Osborne Street which the council owns. A planning application will be submitted for the site after discussion with local people and businesses.

The demolition of the frontage of these units, and Abbey Walk car park will happen in early 2025.

<https://www.nelincs.gov.uk/a-town-centre-transport-transformation-is-on-the-way/>



## Town centre housing site

The Alexandra Dock area of Grimsby, between the new Onside Youth Zone and the Fishing Heritage Centre area looks set to be transformed over the next few years after the build lease for the area was

signed with leading UK homebuilder, Keepmoat.

The 6.25 acre town centre site bordered by Fisherman's Wharf and the River Freshney will eventually see a community of around 130 homes with supporting commercial accommodation.

Keepmoat will be doing consultation before a formal planning application is submitted in the coming months.

<https://www.nelincs.gov.uk/brownfield-housing-site-moves-a-step-closer/>



## Sea Road, Cleethorpes

JemBuild Ltd, based in Humberston, North East Lincolnshire, has won the contract to build the iconic building at Sea Road in Cleethorpes, which will start in the new year.

Committed to using local companies where possible, JemBuild has already been working with North East Lincolnshire Council on the retaining wall works behind the old beach safety offices.



A new three-storey building will be constructed on the brownfield site on Sea Road, comprising retail or hospitality space, as well as new public amenities and a changing places facility. Work is ongoing to secure the pre-let agreement for the hospitality provider that will occupy the building. [www.nelincs.gov.uk/sea-road](http://www.nelincs.gov.uk/sea-road)

Work is also ongoing on the Market Place and Pier Gardens scheme. Watch out in the next brochure for updates to these!

Follow the progress of our schemes on [www.nelincs.gov.uk](http://www.nelincs.gov.uk)





# How to get about the borough this Winter

## Looking to get about the borough in the cold? Why not take the bus?

With a range of discounted tickets and free passes for those who are eligible, there are plenty of reasons to hop aboard this Winter.

Regardless of where you live in North East Lincolnshire, there is a service that can help you get to wherever you need to go.

For those looking to save this Winter, the £1 ticket is available to both adults and children. This wonderful offer enables you to travel anywhere in North East Lincolnshire for just £1, all day on weekends and after 6pm Monday to Friday, so you can get out and about to beat those winter blues for less.

However, you may be able to get across the borough completely free of charge if you're eligible for a Concessionary Travel Pass. Those who are of pensionable age or disabled can apply for the pass to allow them free local bus travel before 9.30am to 11pm Monday to Friday and free local bus travel all day weekends and bank holidays.

To apply, visit - <https://www.nelincs.gov.uk/streets-travel-and-parking/travel-and-public-transport/bus-pass-concessionary-travel-scheme/>

Additionally, new service changes have made getting across North East Lincolnshire more accessible for residents.

An increased frequency of the 3 and 4 services means there will be a bus every 10 minutes instead of 15 as well as extra journeys to Laceby in the morning and evening.

A brand new bus route has also meant that those living in Bradley now have constant access to bus travel. The number 11 travels through the town centre, reaching as far as Cheapside and Bradley Road to ensure all residents have the opportunity to use it.

Look out for upcoming Christmas service changes and plan your journey at <https://www.stagecoachbus.com/about/east-midlands>

**“The feeling that you’ve helped a child and the rewards that you get from it, it’s an amazing feeling.”**

Bev, a foster carer in North East Lincolnshire



North East Lincolnshire Council



**To find out more about becoming a foster carer visit**

**[www.nelincs.gov.uk/fostering](http://www.nelincs.gov.uk/fostering)**







# Family Hubs and Start for life

**Supporting families so they can give their child the best start for life, whoever they are and regardless of ability or circumstance.**

**Our Family hubs** provide a place where services can connect and work together, to help families access help and support at a local level.

From parents thinking about having a baby, right through to a child turning 19 years old (25 years old for a young person with a disability or special need).

Families will be able to access the right support at the right time in the right place.

## **Our Hubs offer support with:**

- Becoming a parent
- Easy, local access to registering your baby's birth
- Infant Feeding
- Understanding your child's development
- Parenting and co-parenting
- Supporting your mental health needs
- Raising aspirations for families
- Signposting and helping parents to access services that can help



For more information, visit: [livewell.nelincs.gov.uk/start4life](http://livewell.nelincs.gov.uk/start4life)

## Help with Cost of Living

### Household Support Fund

The Council has been awarded just over £1.5m from the Government's DWP Household Support Fund to help its most vulnerable communities to March 2025.

This is the sixth round of funding and the previous schemes have provided support for free school meals, direct payments, boiler servicing for older people and food bank support. The scheme will continue to fund the Warm Space initiative; organisations involved in this can be found here:

[www.nelincs.gov.uk/benefits/household-support-fund/](http://www.nelincs.gov.uk/benefits/household-support-fund/)

If you or someone you know is experiencing financial distress, get help and support via ConnectNEL.

The fund supports with costs for energy, food and emergency household expenses through vouchers, goods and grants, benefit and debt advice as well as other support. For more information on this and Council Tax, Housing Benefit or Free School Meals visit [www.nelincs.gov.uk/benefits](http://www.nelincs.gov.uk/benefits)

### Claim pension credit NOW to get the winter fuel allowance

Pensioners. Have you checked if you can claim pension credit to help support your income?

AGE UK North East Lincolnshire can help you check and also help you apply for support. Office appointments are available at both the Grimsby and Cleethorpes offices as well as home visits, where appropriate. Call 01472 344976 to start your journey or visit [www.gov.uk/pension-credit](http://www.gov.uk/pension-credit).

Pension credit is worth, on average, £3,900 a year. But did you know, if you receive just £1 in Pension Credit, then you are eligible for winter fuel allowance too. Pension Credit also unlocks additional support including help with Council tax, NHS dental care, and for those over 75, a free TV licence.

Last date to apply and still qualify for Winter Fuel Payment is 21 December 2024.



## Help on your doorstep at Centre4

Whatever the challenge, support is available at Centre4. We can help with things like:

**Debt advice** – Need help with dealing with an existing debt or advice on how to manage your money? Our trained team are on hand to help.

**Welfare, benefits, housing support** – Struggling to find out which benefits you can claim? Our team is on hand to assist you, either to complete benefit claim forms, advice to help get the benefits that you may be entitled to.

**Wellbeing Support** – Social Prescribing aims to connect people to meet the practical, social and emotional needs that affect their Health and Wellbeing or their Mental Health.

**Youth Club** – For all upcoming activities for young people aged between 7 years to 19 years, visit the Centre4 Facebook page.

**Community Hub** – We have great working spaces available to use, community spaces available to hire. Drop in for a Barista Coffee at the Canopy Café or Community Café

**4 Families** – Being a parent has its ups and downs and you may need some help from time to time. Our volunteers can offer friendship and support along your parenting journey.

**Room Hire** – Contact Centre4 for all your room hire needs on 01472 403403

**Community Gym/Sports Hall** - Want to improve your fitness levels? Join Centre4 Community Gym by dropping in or calling 01472 403403

If you would like to find out more about any of these services, give us a call on 01472 403403 or drop-in at 17a Wootton Road, Grimsby DN33 1HE.

Take that step  
and contact  
connectNEL  
TODAY







**Stop smoking:  
lose weight:  
get fitter:  
improve your mood:  
beat stress:  
find your focus.**

Did you know, there's **FREE** local support to help with all of these things...and more?

The Wellbeing Service is a team of people with the expertise and experience to help YOU change your life.

But don't just take it from us – here's what one local person said: *"I was overwhelmed with life and didn't know where to start, but I'm no longer taking anti-depressants and I'm feeling healthier after losing a stone. I'm more in control of my spending thanks to the support I've received."*

**If you want to change, don't delay and find us today: Wellbeing Service (nelincs.gov.uk) email: wellbeing@nelincs.gov.uk phone: 01472 325500**



## Supporting you on your journey to motherhood



### Who are we?

We're a new **FREE** service offering wellbeing support to women who are thinking about conceiving, who are already pregnant and those who are post-birth.

### Things we can help with:

Low Mood	Confidence/ Self-Esteem	Coping Strategies
Anxiety	Unhealthy Behaviours	Stop Smoking
Stress Management	Debt/ Financial Concerns	Healthy Eating
Daily Routines/ Focus	Housing, Family Concerns	Wider Wellbeing

### Contact a member of our team:

01472 325500

[www.nelincs.gov.uk/mws](http://www.nelincs.gov.uk/mws)

[wellbeing@nelincs.gov.uk](mailto:wellbeing@nelincs.gov.uk)

This is not a psychological or clinical service.



**Get free support**

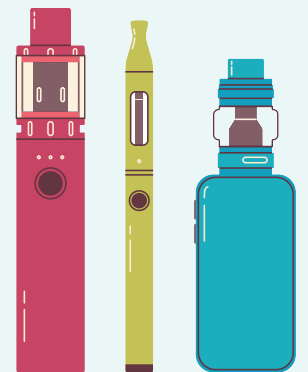
# SWAP TO STOP

**Ditch the cigs** for a free vape and get support to quit smoking

**Get free support** to kick the habit, and receive a free vape

- 12-week support
- A free vape starter kit
- A choice of products and flavours

**Must be aged 18+ to qualify**



**Interested? Get in touch!**

Scan the QR code, call 01472 325500, or visit: [livewell.nelincs.gov.uk](http://livewell.nelincs.gov.uk)



# Helping people in North East Lincolnshire to be better off



## Can we help you get ready for Christmas?

### Spread the cost with one of our low-cost Christmas Loans!

Your not-for-profit Credit Union has loans of all sizes to meet your festive needs, whether they be presents, food and drink or a festive break.

- Borrow from £100 upwards
- Interest is only charged on the reducing balance
- Repayments can be weekly, fortnightly, 4 weekly or monthly to match your income
- Pay off your loan early without any penalty fees
- You may save into our Christmas Saver account alongside your loan repayments ready for next year

> [www.hullandeycu.co.uk/christmas-loan](http://www.hullandeycu.co.uk/christmas-loan)

### Loan examples (paid over 12 months)

**Borrow £250 @ £25.12 per month**  
(total repayable £301.44). 42.6% APR.

**Borrow £500 @ £50.23 per month**  
(total repayable £602.76). 42.6% APR.

### Plan ahead for next year...

We offer an alternative way to plan for festive spends. Our popular **Christmas Saver** account lets you lock money aside, safely out of temptation's way, through the year until 1<sup>st</sup> November. Just £10 a week saved from early January could give you a handy 'pot' of £500 for next Christmas.

> [www.hullandeycu.co.uk/christmas-saver](http://www.hullandeycu.co.uk/christmas-saver)



HEY Credit Union is authorised by the Prudential Regulation Authority and regulated by the Financial Conduct Authority and the Prudential Regulation Authority – FRN 213620.

## 25 Years as The Fairer Alternative

This year sees HEY Credit Union celebrating its **25<sup>th</sup> Anniversary**. Since 1999 our 18,000 members are estimated to have saved a massive **£25 million** in interest charges, as well as earning **£1.6 million** in saver rewards (Dividends). This money has stayed in our region's economy rather than ending up in the City of London or as bankers' bonuses. We are one of a worldwide 'family' of credit unions, all owned co-operatively by the people who save and/or borrow with us, with service not profit as our guide.

If you support our aim to help people to afford their lives, build financial resilience to withstand hard times and manage their money well, why not become a **Credit Union Member**? It's free to join, and you'll be making a positive difference in your community.

## What our local Members say:

*"Saving with the CU is a lifesaver! I use the Christmas Saver which is great for me as I'm terrible at saving and this does not allow me to withdraw funds until November so it's fabulous to have money for Christmas. The Grimsby team are friendly and approachable, and nothing is too much trouble for them. Also, the £25 bonus in the first year is amazing and a great incentive to join. I fully recommend saving with this group."*

*"You are always so helpful when I visit the branch. I wish all customer service was like this!"*



## At our Grimsby Branch since Jan 2022:

**890 Members** have joined

**£254,926** has been accumulated in **Savings**

Local Members earned **£6,600** in **Saver Rewards** in 2023 24

Members have taken out **474 Loans** with us totalling **£1,063,504**

*We estimate NEL residents have **saved over £800,000** in interest charges by borrowing from us instead of using doorstep lenders.*

## Where to find our friendly team

**Grimsby Library, Town Hall Square:** Tu, W, Th 10am - 2pm  
**Community Shop, Centre4:** Tu 10am - 12.30pm  
**West Marsh Community Cntr:** W 11am - 2pm  
**Freeman Street Market (The Courtyard):** F 10am - 2pm  
**Immingham:** see website.

For the full range of services our members enjoy, handy money tips, a benefits checker, budget planner and links to support services, visit [www.hullandeycu.co.uk](http://www.hullandeycu.co.uk)

Follow us on social media: 'HEYCreditUnion'





# MOVED HERE FROM ABROAD?

## You may need to apply for an eVisa

Anyone living in the UK that moved here from overseas will need to apply for an eVisa to prove their immigration status.

### What's an e-Visa?

It's an online record of your immigration status and the permissions you have to enter or stay in the UK.

If you're already living in the UK, you have until 31st December 2024 to apply online for an eVisa.

### Who needs an eVisa?

Anyone who has travelled to this country to live and work will require an eVisa from 1 January 2025.

If you already live and work here, but are not a British citizen, then you will need to apply for an eVisa.

The eVisa replaces much of your physical documentation. It's also secure, so cannot be lost, stolen or tampered with.

eVisas can be shared with landlords and potential employers to prove your right to live and work here.

If you are a British or Irish citizen, and you hold a British or Irish passport, you do not need an eVisa or a UKVI account and do not need to do anything.

### Is there a cost?

Applying for an eVisa is free.

### How do I find out more and apply?

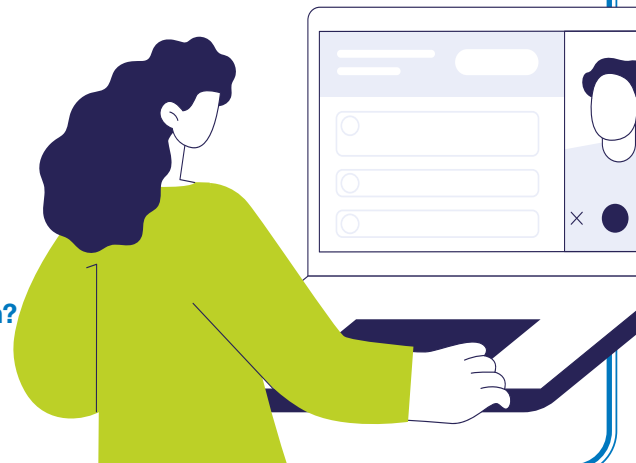
You can find out more about the eVisa scheme and how to apply at [www.gov.uk/evisa](http://www.gov.uk/evisa)

### Need help with your application?

If you need some assistance with completing an application, support is available.

Contact Citizens Advice North East Lincolnshire by email at [immigration@advicenel.org.uk](mailto:immigration@advicenel.org.uk) or over the phone on 01472 252516.

Alternatively, contact Migrant Help over the phone on 07483 170100 or via email at [evisa@migranthelpuk.org](mailto:evisa@migranthelpuk.org).



## Join our community group and help broaden horizons

### One Voice offers a range of weekly activities within the community

One Voice has been supporting the communities of Immingham, Habrough and Stallingborough since 2009. As a Charitable Incorporated Organisation it also holds annual events and community projects.

Recent ones have included cookery courses to cook healthy meals on a budget, with funding from NELC in partnership with CARE, and a Youth outreach project, to raise awareness of activities on offer and identify gaps in provision or barriers to accessing activities. This is funded by the Police and Crime Commissioner.

With the support of JEFF Funding, One Voice is delivering music production sessions for young people. Its community What's On Guide is at [www.onevoicecommunity.com/whats-on-guide/](http://www.onevoicecommunity.com/whats-on-guide/)

As the work of One Voice continues, so does the need for people who want to make a difference.

If you are interested in getting involved email [chair@onevoicecommunity.com](mailto:chair@onevoicecommunity.com) or ring **07513612964**.



## What's On in your area?

Whether you are someone in North East Lincolnshire looking for something new to do, or a local organisation wishing to shout about the amazing work you do, a group seeking advice about funding, or even wishing to take part in the fabulous **NE Lincs Winsby Community Lottery**... Community Spotlight is for you.

Community Spotlight is a 'one-stop-shop' for our communities to share events, groups, clubs and good work being done in our area.

It's a place to 'shine a light' on and support the fantastic community groups and organisations out there, as well as providing some great informative content for the groups themselves.

You can find all this info – and more – at [www.nelincs.gov.uk/community-spotlight](http://www.nelincs.gov.uk/community-spotlight)

## If you or someone you know is worried about losing their home, there are people who can help. You can read here how local man Graham was supported – we can do the same for others.

Graham was drinking to help him cope after being sectioned due to a mental health episode. His life spiralled further after his long-term relationship broke down and he lost his job. Graham was then served an eviction notice after problems with flatmates.

Desperate, he called the North East Lincolnshire Council's Homeless Team, and officers immediately stepped in. He was referred through the council's Housing Related Support scheme to one of their seven providers. They helped Graham apply for Universal Credit, and access food banks.

With their support, he went back to learning to improve his reading and writing skills and apply for PIP (Personal Independence Payment). He was also supported to access mental health services to help him with his ongoing struggles.

**In a new home with money now coming in, Graham said "I began to feel much better, I am drinking less and eating well."**

**Housing Related Support is for anyone over 16 who needs help and is willing to work with services to learn new skills and achieve their goals. If you think Housing Related Support could help you, please ring the NELC Home Options Team on 01472 326296 (Option 1).**



## Home energy advice

Contact the home energy team for all your energy and housing enquiries, including:

- heating
- insulation improvements
- housing repairs
- home improvement grants

## Don't get left out in the cold this winter...

Every year, damp and mould causes issues for thousands of homes when the colder weather sets in.

Enjoy a warmer home this year; visit [nelincs.gov.uk/homes-and-property](http://nelincs.gov.uk/homes-and-property) for help and advice



**For advice and support contact North East Lincolnshire Council's Home Energy Team on (01472) 326296 (option 5) or email [energy@nelincs.gov.uk](mailto:energy@nelincs.gov.uk)**



Working in partnership





# PROUD NORTHERNER?

We are too but we all need  
a little extra help sometimes.

Join our free **Priority Services Membership**  
if you might be more vulnerable in a power cut.

Be prepared, whatever the weather.  
Save our power cut map and **105**  
in your mobile phone. We're here for you 24/7.

Find out more and join our priority services  
community today at [northernpowergrid.com/care](https://www.northernpowergrid.com/care)





## YOUR POLICE AND CRIME COMMISSIONER

### JONATHAN EVISON

I am delighted to have been re-elected in May as your Police and Crime Commissioner. Over the past 3 years, we have been working hard to increase feelings of safety and improve public confidence in policing, but the work can not stop there. My priorities going into the next 4 years will be to ensure there is more visible policing and more initiatives to tackle drugs and anti-social behaviour. We are continuing to develop fair policing to help tackle rural, coastal and urban crime. We will be introducing more new technology to help make our roads safer and reduce casualties. We will continue to maintain strong support for victims of crime and increase the work to end violence against women and girls.



- HumbersidePCC
- opcchumberside
- HumbersidePCC

[www.humberside-pcc.gov.uk](http://www.humberside-pcc.gov.uk)

## MY COMMUNITY ALERT

My Community Alert is a free messaging system where I regularly share work that we are doing. It is also where you can find out more about local policing activity in your area, the latest initiatives and how you can get involved.



Commissioned by the Humber Violence Prevention Partnership (Humber VPP), Youth Connect is a website for 11-to-18- year-olds who are looking to explore new interests, develop skills and contribute to their community. The platform is part of a strengths-based campaign to encourage young people to take part in positive activities as an alternative to being drawn into crime or violence. The comprehensive directory of activities – including sports clubs, art classes and silent discos – covers Hull, East Riding of Yorkshire, North Lincolnshire and North East Lincolnshire. Youth Connect also lists relevant support services so young people have access to any help they may need. To see what activities are happening in your area, visit [www.youth-connect.co.uk](http://www.youth-connect.co.uk)

## NEW SERVICE FOR VICTIMS OF CRIME



In conjunction with Victim Support, our office has launched a new service to support people who have been affected by crime.

Affected By Crime (ABC) is a new service dedicated to helping people in the Humber region. Support is available to all victims of crime and their families regardless of whether they have reported the crime to the police. The service seeks to support people to cope and recover after crime.

The ABC service can:

- ▶ Help you to navigate the criminal justice system and talk to other criminal justice agencies
- ▶ Support you to cope with what you have experienced
- ▶ Talk to you about your safety
- ▶ Provide you with access to useful websites and online tools
- ▶ Answer your questions, or signpost you to someone who can

The service can be accessed by telephone **(0800 368 7586)** or live chat, which can be found on the service's website [www.affectedbycrime.com](http://www.affectedbycrime.com)



“

“I get a love note every other day”



Stalking can be recognised by remembering **FOUR**.  
Stalking behaviour is **Fixated, Obsessive, Unwanted, and Repetitive**.

If you are in immediate danger ring the police on **999**.  
Alternatively use **101** to report your stalking.

For support and advice you can contact **Women's Aid**  
on **01472 575757**.

For more information please visit **Stalking and harassment: Support and advice | NELC (nelincs.gov.uk)**



# Learning at your finger tips!



It really is never too late to learn something new in North East Lincolnshire! No matter whether your situation and your end goal, there really is something to suit everyone.

## Not sure where to start?

Would you like to do something, but you're not quite sure what it might be? In North East Lincolnshire we have a fully funded careers team that are here to support you. No matter what your circumstances are, book in for a free careers appointment with a qualified careers advisor and they can talk to you about all the options from our training and employment providers.

## Would you like support into a new job?

Across the area, we have projects supporting people to get the job you want. Build your confidence, improve

your skills and access employment across our key sectors such as Health and Social Care and Engineering Construction.

## Already in work but would like to upskill?

There are lots of options available, even if you are working. New Skills Bootcamps are available offering a huge range of subjects from youthwork to HGV driving!

You can also find part time, evening, or distance learning courses if you want to study in your own time or from home. These can be anything from Counselling, Mental Health awareness to English and Maths.

LEARN ★ CONNECT ★ EARN

Many of these courses are fully funded for all adults, but please speak to providers to get details.

Apprenticeships are also available to people of any age and can be used to upskill within your current job role – even if you work for a small business. Local businesses can get support with apprenticeship levy by visiting our apprenticeship webpage.

## Come talk with us:

Thursday 9 Jan, Freshney Place

Wednesday 5 March  
10-3pm Grimsby  
Job Centre  
(National  
Careers Week)



**Lincs Inspire**

**Sunday 24th November**  
**Cleethorpes**  
**10:30am to 2:30pm**

**Christmas**  
at the  
**Leisure Centre**

**Giant slide (small fee)**

**LINCINSPIRE.COM/  
CHRISTMAS-AT-THE-LEISURE-CENTRE/**