

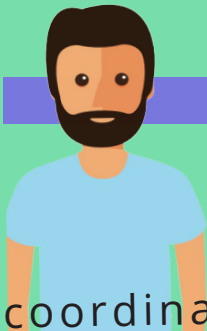


What is Lifelong Links?



It can help find and bring together people who care about you.

How does it work?
What happens?



A trained coordinator will talk to you about:

coordinator*

*will work with you throughout Lifelong Links and listen to what you want and need.

People you want to be in touch with.

Your family, friends & school.

Your hopes and dreams.

After chatting to you the coordinator will:

1

Learn about the people that are important to you.

2

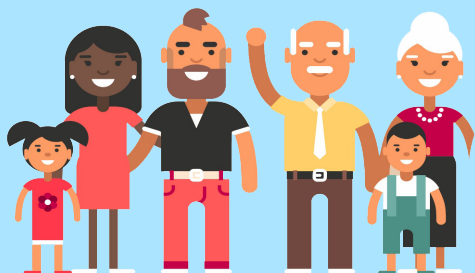
See if they can find those people and get in contact with them, if it is safe to do so.

3

Discuss with you and your social worker if they should be invited to a meeting called a **Family Group Conference**.

How can Lifelong Links help me?

You can learn more about your family history.

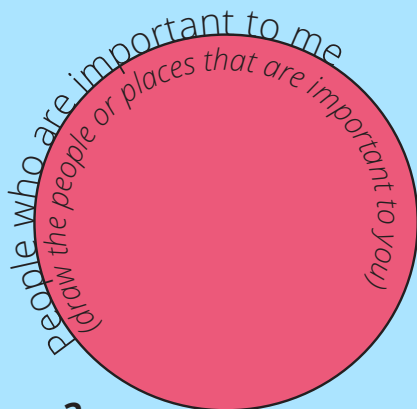


By bringing together people who you want in your life and who you can turn to for support as you grow up.

Can help you find people you have lost contact with or a family member you've not met yet.

Can I be involved?

If you want to learn more talk to your social worker or carer and they will contact the Lifelong Links service in your area.



Do you have any questions?

If there is anything you don't understand please just ask. You can write your questions here so you don't forget them.
