

North East Lincolnshire Elective Home Education Newsletter Summer 2025

Meet the EHE team



Our team consists of Claire (Elective Home Education coordinator), Dan and Laura (Education

Welfare Inclusion Officers). We are here to offer support, information and guidance about elective home education.

Welcome to the Elective Home Education (EHE) newsletter. We hope you find these newsletters insightful and interesting. If there is something specific you would like to discuss, please get in touch with the team.

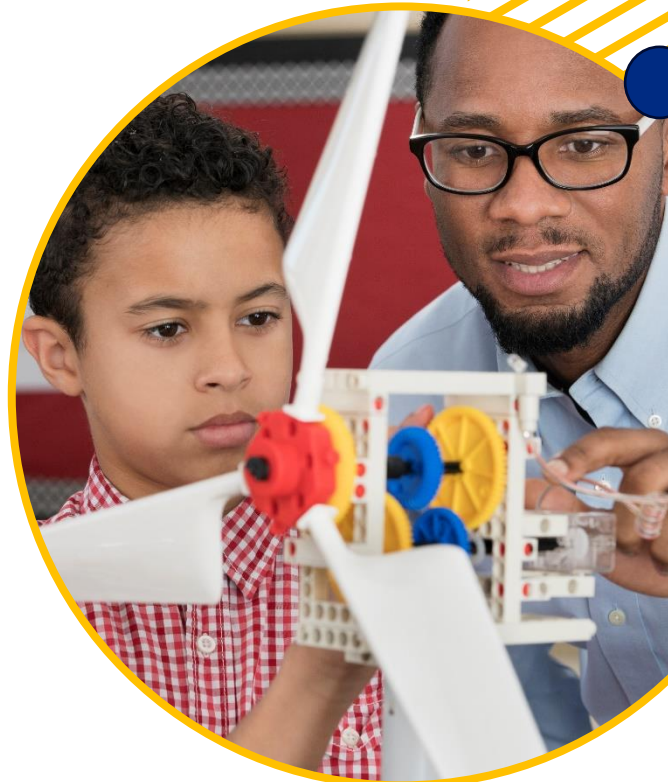
The team strive to conduct annual visits to families to check in, offer support, and let children showcase the progress they have made. We would love to see what you have achieved. If you would like to arrange a visit, please contact us.

You can contact us by telephone on **01472 323203**, by whatsapp on **07765351485** or by email electivehomeeducation@nelincs.gov.uk. We aim to respond within 5 working days (please note we are a term time only service).

From September 8th, 2025, we will be running term time drop-in sessions at our Family Hubs, so please feel free to come along. You can find us at:

Immingham family hub every Monday 1pm-3.30pm
Central family hub every Wednesday 1.30pm-4pm
Nunthorpe family hub every Friday 9.30am-12am

www.nelincs.gov.uk/EHE



Our children, our future



North East Lincolnshire Council
Children's Services

North East Lincolnshire Elective Home Education Newsletter Summer 2025



Summer Visits

Thank you to those families we have visited this term and for the many reports we have received. It has been a privilege to observe the progress your child is making in their home education journey. We have seen a variety of educational activities, from maths working walls to scrunchie making! Have a fantastic summer, and we look forward to seeing you again in the autumn term.

COMPETITION!

Design our new logo

Calling any budding designer!

Can you design a new logo for North East Lincolnshire Home Education?

Entries by email to
electivehomeeducation@nelincs.gov.uk

We would love a new logo that represents the wonders of elective home education.

The winning entry will be used as the official logo for North East Lincolnshire Elective Home Education.

Family hub fun days

Did you know our family hubs are hosting many fun days over the summer? Please join them for family fun with face painting, games, competitions and prizes to win!

Central Family Hub Wed 30th July 10-2
Queensway Family Hub Thurs 7th August 10-2
East Marsh Family Hub Tues 12th August 10-2
West Marsh Family Hub Sat 16th August 10-2
Nunthorpe Family Hub Wed 20th August 10-2
Immingham Family Hub Fri 22nd August 10-2
Reynolds Family Hub Thurs 28th August 10-2



Compass Go Support

All children (age 5-19 years) can access support from Compass Go, a mental health support team that assists children, young people, and families in North East Lincolnshire with issues related to emotional and mental health well-being.

www.compass-uk.org/services/north-east-lincolnshire-mhst

Compass Go is offering sessions to small groups of home-educated children of similar ages. These sessions can be conducted either face-to-face or virtually. For further information or to express interest, please contact

electivehomeeducation@nelincs.gov.uk