



# Local Arrangements 2025/26

**CONTENTS**

Foreword	3
1. Introduction and Local Context	5
2. Partnerships	7
3. Safeguarding Partners and Relevant Agencies	8
4. Child Safeguarding Practice Reviews	11
5. Scrutiny and Assurance	12
6. Multi-agency Education and Training	14
7. Funding Arrangements	15
8. Voice and Engagement	16
9. Performance and Analysis	17
10. Annual Report and Review	18
11. Priorities for 2025/26	19
12. Appendix 1: Relevant Agencies	23

## Foreword

Welcome to the North East Lincolnshire (NEL) Safeguarding Children Partnership (SCP) Local Arrangements to safeguard and promote the welfare of children.

Children, young people and families are first, centre and last in all we do, and we are proud to acknowledge and celebrate the positive outcomes we have achieved. We want NEL to be a place our children can grow up happy and healthy, safe in their homes and communities with people that love them. We are ambitious for a child's future with a focus on learning and aspiration so they can be the best they can be.

By being 'stronger together', we can achieve our vision of 'Our Children, Our Future'.

Our NEL SCP Local Arrangements place children, young people, families and communities at the heart of our early help, family help and safeguarding system. The NEL SCP Local Arrangements are set in the context of the Helping, Supporting and Protecting Children and Families in NEL Threshold Document (NEL SCP Threshold Document) and underpinned by our local practice approach to ensure children and families receive the right support, at the right time by the right person.

The NEL SCP Threshold Document is set in the context of our NEL SCP that includes the three statutory safeguarding partner organisations, (the Police, Integrated Care Board and Council), and other relevant partners. Specifically, it sets out the levels of need and the local criteria for action. This will be achieved through services which support children, young people, and families to participate, find help online and in their networks and communities, to be resilient, stay safe and independent.

We want children, young people, and families to be supported by a workforce that is passionate, compassionate, motivated, and proud of their work and who know, support and care for our children, families, and communities. We want our workforce to be supported by caring and knowledgeable leaders and colleagues and be supported to learn, develop, reflect on practice, and feel valued, appreciated, and respected. We will ensure the workforce have the tools and resources that they need to make a difference with everyone taking responsibility for their own learning, development and practice. In NEL relationships unite us, and we put children at the heart and of centre of our work. We are ambitious and we want to be innovative and collaborative to create lasting change. We are aspirational for ourselves, as well as our children and families, and we will hold each other to account with open and honest conversations in the context of a shared vision and thresholds.

Across the partnership, we remain committed to co-producing with children, young people and families using their strengths and assets to develop services to meet their individual needs. By listening, learning, reviewing and adapting, by taking account of performance data and intelligence, by listening to our children, young people, families and taking account of the findings from independent scrutiny, rapid reviews, practice reviews, priority areas of focus have been identified where partnership action will be completed through the delivery of SCP strategic plans.

These NEL SCP Local Arrangements fulfil the requirements set out in Working Together to Safeguard Children 2023 (Working Together 2023), including the arrangements for:

- the safeguarding partners to work together to identify and respond to the needs of children in the area
- commissioning and publishing Local Child Safeguarding Practice Reviews
- independent scrutiny of the effectiveness of the NEL SCP Local Arrangements

The NEL SCP Local Arrangements are managed and co-ordinated by the SCP Team, through the Children's Assurance, Partnerships and Evaluation (CAPE) Team within NEL Council. Supported via the NEL SCP partnership and governance arrangements, and through system leaders and key officers from across partner organisations, we will deliver a focussed, co-ordinated response, innovate system change, deliver efficiencies and drive-up multi-agency practice.

As Delegated Safeguarding Partners and through the NEL Safeguarding Children Partnership Board (SCPb), we remain committed to improving outcomes for our children, young people and families and we will continue to work collaboratively so that equal and joint, consistent and committed leadership continues.

These NEL SCP Local Arrangements were published in September 2025 and will be implemented with immediate effect.



**Paul French**  
Temporary Chief Superintendent  
Humberside Police



**Paula South**  
Director of Nursing Governance,  
Humber and North Yorkshire  
Integrated Care Board



**Anne Marie Matson**  
Director of Children's Services  
North East Lincolnshire Council

## 1. Introduction and Local Context

### Introduction and context

Helping, supporting and protecting children through a co-ordinated approach to safeguarding children is everyone's responsibility. Children, young people and families are at the centre of the system and through collaborative working across agencies who work with children, young people and families, including those who work with parents/carers, the ambition of the NEL SCP Local Arrangements is that everyone is able to recognise, respond and fulfil their responsibilities to children, young people and families in order to build their resilience and ensure that they are safeguarded.

The NEL SCP provides the safeguarding arrangements under which the safeguarding partners and relevant agencies work together to coordinate their safeguarding services, identify, and respond to the needs of children and young people in NEL, commission and publish local child safeguarding practice reviews and provide scrutiny to ensure the effectiveness of the arrangements. Accountability for the effectiveness of safeguarding rests with the safeguarding partners through the NEL SCPB.

These NEL SCP Local Arrangements meets the requirements of Working Together 2023, with a focus on:

- arrangements for the safeguarding partners to work together to identify and respond to the needs of children in the area
- arrangements that enable joint identification of, and response to, existing and emerging needs, and to agreeing priorities to improve outcomes for children.
- the relevant agencies the safeguarding partners will work with, why these organisations and agencies have been chosen, and how they will collaborate and work together to improve outcomes for children and families
- how all, schools (including independent schools, academies, and free schools), colleges, early years and childcare settings, and other educational providers (including alternative provision) will be included in the safeguarding arrangements
- how any youth custody and residential homes for children will be included in the safeguarding arrangements how the safeguarding partners will share information and data safely and effectively, using arrangements that clearly set out the processes and the principles for sharing
- how the safeguarding partners will use data and intelligence to assess the effectiveness of the help being provided to children and families, including early help
- how multi-agency training will be commissioned, delivered, and monitored for impact, and how they will undertake any multi-agency audits
- how the arrangements will be funded
- the process for undertaking local child safeguarding practice reviews, setting out the arrangements for embedding learning across organisations and agencies
- how the arrangements will include the voice of children and families, including how to escalate concerns and how any disputes will be resolved, including whistleblowing procedures

## Legislative context

Working Together 2023 identifies strong, joined-up leadership and clear accountability as critical to effective multi-agency safeguarding, in bringing together the various organisations and agencies.

It identifies it is important that the head of each statutory safeguarding partner organisation, referred to as the Lead Safeguarding Partner, plays an active role in these arrangements.

## Helping, Supporting and Protecting Children and Families in NEL Threshold Document 2024 / 28

The **NEL SCP Threshold Document** meets the requirements of Working Together 2023 by setting out the levels of need (thresholds) in NEL, in the context of our broader system for early help and protection and fulfils the safeguarding partners' responsibility to publish a threshold document.

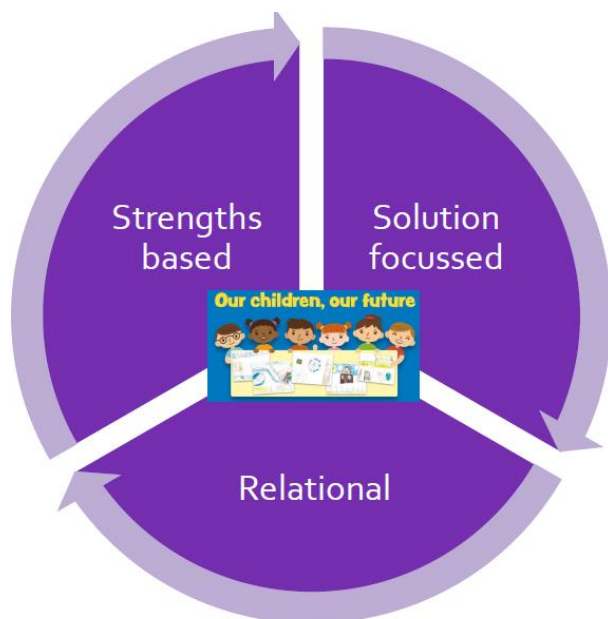
The NEL SCP Threshold Document is also set in the context of the Children's Social Care National Framework 2023 and underpins the local Practice Approach and associated planning and commissioning arrangements.

Specifically, the document:

- sets out how services support children, young people, and families to participate, find help online and in their networks and communities, to be resilient, stay safe and independent
- sets out our local definitions of levels of need, including universal, targeted and specialist
- sets out guidance to professionals about providing early help and making decisions about levels of need
- introduces the local Practice Approach which provides the framework for how the provision of help and protection should be undertaken across the partnership
- introduces the Risk Analysis Framework which provides a consistent model for the assessment, analysis and management of risk
- sets out the shared vision principles which underpin multi-agency practice in NEL

Our NEL organisational model places children, young people, and families at the centre of a system that works for all, where the earliest help is to enable families to access information and self-help, in their communities. For those more in need, targeted early help prevents escalation and enables resilience and independence, to achieve positive outcomes. Where required, specialist agency involvement and protection are swift, responsive, and effective, leaving the child's family and network stronger

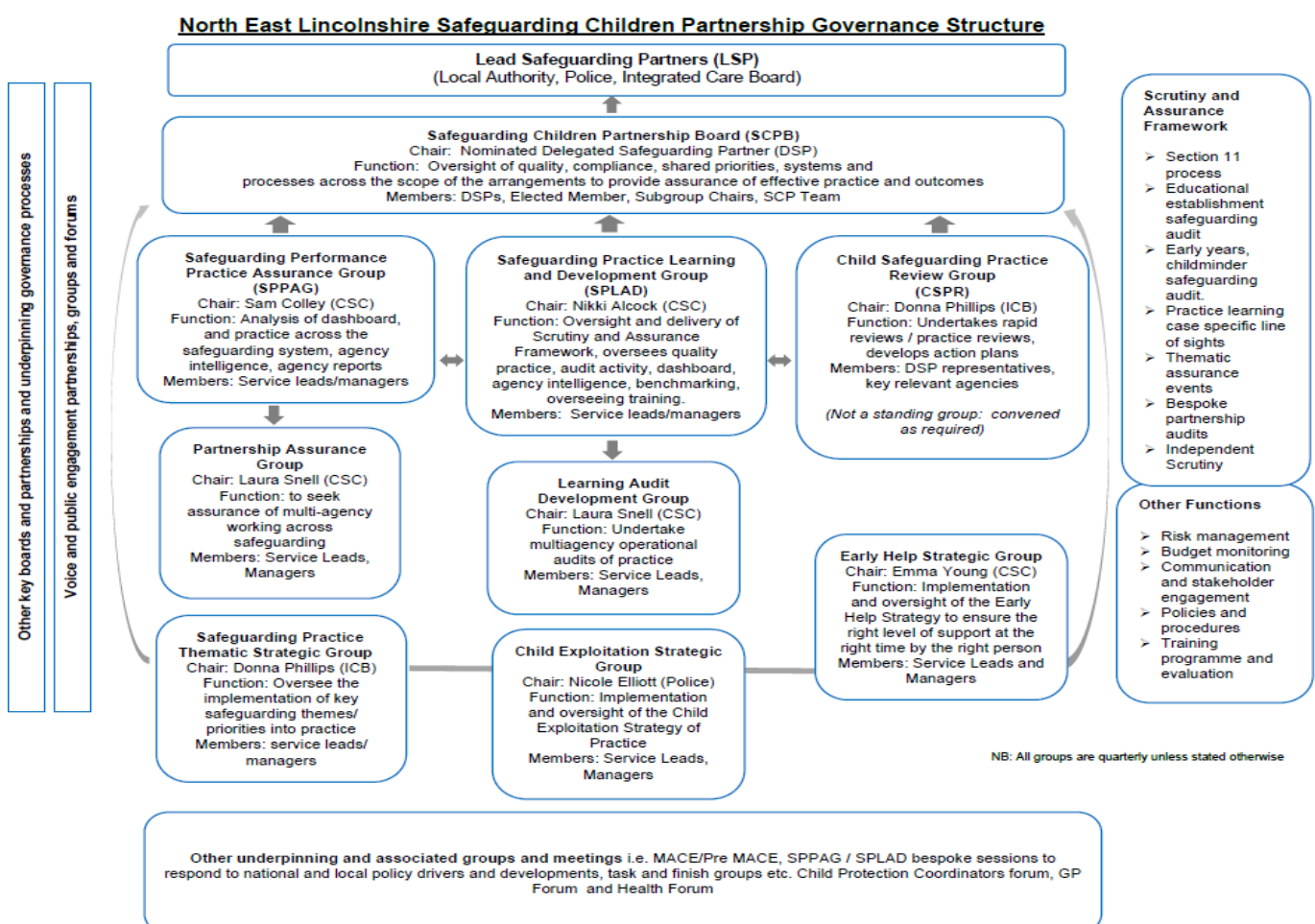
**The NEL Practice Approach** provides the framework for how every practitioner should work with children, young people, and families across the Borough. It is based on our NEL culture, values and beliefs, and our vision 'Our children, our future' aimed at focusing us to achieve our ambition for children to grow up happy and healthy, safe in their homes and communities with people that love them. We will do so by adopting a relational approach with each other, and our children, young people and families, to build on their strengths and enable them to find solutions for themselves



<b>Relational</b>	<p>We want:</p> <ul style="list-style-type: none"> <li>to have strong, positive, trusting relationships across the partnership that builds co-operation and constructive challenge</li> <li>such relationships to be at the heart of practitioners, managers and senior leaders' relationships with children, young people and families</li> <li>that everyone engages constructively to deliver effective support to children, young people and families</li> </ul>
<b>Strengths based</b>	<p>We want:</p> <ul style="list-style-type: none"> <li>to work with children, young people, parents and carers to find and amplify their strengths to effect positive change and achieve the best possible outcomes</li> </ul>
<b>Solution focussed</b>	<p>We want:</p> <ul style="list-style-type: none"> <li>to help people explore their strengths and resources and drawing up a plan about what needs to be achieved to overcome concerns</li> </ul>

## 2. Partnerships

The NEL SCP Local Arrangements have been established in the context of wider partnership and governance arrangements in NEL. They are designed to be and are consistent with the requirements of Working Together 2023 and the delivery of the NEL SCP priority areas of focus. Under the auspices of the NEL SCP, the NEL SCP Local Arrangements are underpinned by a robust partnership and governance structure which is detailed below:





## Links to Wider Strategic Partnerships

We recognise that to be most effective we need to drive action that goes beyond the usual constraints and boundaries of the individual organisations involved. To achieve this, we will work closely with other partnerships which have a key role in the health and wellbeing of children, young people and their families, including but not exhaustive the:

- Corporate and Community Parenting Board
- Domestic Abuse Partnership Board
- Safeguarding Adults Board
- Children, Young People and Families Strategic Board
- Community Safety Partnership
- Youth Partnership Board
- SENDAP Partnership Board
- Health and Wellbeing Board

## 3. Safeguarding Partners and Relevant Agencies

### Leadership

In NEL the Lead Safeguarding Partners as identified by Working Together 2023 are:

- Chief Officer of Police
- Local Authority Head of Paid Service
- ICB's Chief Executive

All three Lead Safeguarding Partners have equal and joint responsibility for local safeguarding arrangements underpinned by equitable and proportionate funding including through any contributions from relevant agencies.

Locally the three Lead Safeguarding Partners for NEL are,

- Sharon Wroot, Chief Executive, NEL Council
- Teresa Fenech, Executive Director of Quality and Nursing, Integrated Care Board
- Chris Todd, Chief Constable, Humberside Police

Locally, the agreed lead representatives have delegated their functions to the Delegated Safeguarding Partners who are:

- Ann-Marie Matson, Director of Children's Services, NEL Council
- Paula South, Director of Nursing Governance, Humber and North Yorkshire Integrated Care Board
- Paul French, Temporary Chief Superintendent, Humberside Police

These Delegated Safeguarding Partners have the responsibility and authority for ensuring full participation with the NEL SCP Local Arrangements, though the Lead Safeguarding Partners remain accountable for any actions or decisions taken on behalf of their respective organisation.

The lead representatives (Lead Safeguarding Partners) and those they have delegated their authority to (Delegated Safeguarding Partners), are able to:

- Speak with authority for the safeguarding partner they represent



- Take decisions on behalf of their organisation or agency and commit them on policy, resourcing and practice matters
- Hold their own organisation or agency to account on how effectively they participate and implement the NEL SCP Local Arrangements

The three Delegated Safeguarding Partners agencies will have in place specific assurance arrangements with their respective Lead Safeguarding Partner in order to provide assurance they are meeting their delegated responsibilities.

Strong leadership is essential for the NEL SCP Local Arrangements to be effective in bringing together various organisations and agencies. They will be strongly led and promoted, specifically by local area leaders, including the lead representatives from the safeguarding partner organisations and those to whom they have delegated their authority to, the Portfolio Holder for Children and Education and also through the commitment of chief officers in all agencies.

The NEL SCP Local Arrangements will be delivered through the NEL SCPB which brings together the Delegated Safeguarding Partners, and other relevant officers, to oversee, innovate and develop the NEL SCP Local Arrangements and seek assurance regarding the standard of local implementation across the safeguarding system and to ensure children, young people and families are resilient and safeguarded.

The NEL SCPB is chaired by Ann Marie Matson as one of the three Delegated Safeguarding Partners, it has been agreed the role will be shared a biannual rotational basis.

The core membership of the NEL SCPB is representative of the three Delegated Safeguarding Partners, and respective members from the safeguarding partner organisations. In addition, schools, colleges and other education settings are represented by the Service Director Education Inclusion and Integration, NEL Council.

The NEL Council Portfolio Holder for Children and Education, strategic leads for key relevant agencies and a number of other key officers are invited to attend NEL SCPB meetings.

More detail regarding safeguarding partners' roles and responsibilities and membership of the NEL SCPB is articulated in the NEL SCPB Memorandum of Understanding and the Terms of Reference.

## Relevant Agencies

The strength of local partnership working is predicated on the safeguarding partners working collaboratively together with relevant agencies, whose involvement the safeguarding partners consider is required to safeguard and promote the welfare of children. The NEL SCP Local Arrangements will engage local agencies to collaborate and provide targeted support to children and families.

Relevant agencies are those organisations and agencies whose involvement the safeguarding partners consider are required to safeguard and promote the welfare of local children. **The Child Safeguarding Practice Review and Relevant Agency (England) Regulations 2018** sets out the list of relevant agencies that are required to work under the auspices of multi-agency safeguarding arrangements.

The NEL SCP Local Arrangements are designed to be responsive to relevant agencies are those organisations and agencies whose involvement the safeguarding partners have identified are required to safeguard and promote the welfare of local children.

- It is important to note that: although safeguarding partner organisations are not referred to in the regulations, their staff are subject to the NEL SCP Local Arrangements
- That certain key agencies are not listed in the regulations, as their functions are commissioned or otherwise overseen by one or more of the safeguarding partners - for example, GPs, dentists and mental health service providers are already represented variously through the inclusion of Integrated Care Boards, NHS England, NHS Trusts and Foundation Trusts
- The list of local selected relevant agencies is intentionally focussed at an agency-based level - it is not intended to be an exhaustive list of all bodies and individuals which come into contact with children

The safeguarding partners have selected relevant agencies in NEL based on those that are evident in the local environment, those with whom safeguarding partners have a relationship with and those who have responsibility for and who can actively contribute to helping and protecting children in NEL.

There is an expectation that relevant agencies who are subject to Section 11 share their inspection reports and action plans regarding issues relating to safeguarding and promoting the welfare of children.

Other agencies who are not named in the Relevant Agency (England) Regulations have been included in the NEL SCP Local Arrangements. Examples of these are Humberside Fire and Rescue Service, Lincolnshire Housing Partnership, the voluntary, charity, social enterprise sector who provide activities, support and services for children and families, private sector organisations, faith-based organisations and other health providers. Agencies who are not named in the regulations, whilst not under a statutory duty, should nevertheless cooperate and collaborate with the safeguarding partners particularly as they may have duties under section 10 and/or section 11 of the Children Act 2004.

Where a relevant agency has a national remit, such as the British Transport Police and CAFCASS the safeguarding partners will collaborate and take account of that agency's individual responsibilities and potential contributions towards a number of local safeguarding children's arrangements. The safeguarding partners have secured the clinical expertise of designated health professionals for safeguarding and looked after children within their arrangements.

The full list of locally selected relevant agencies and other agencies not named in the regulations yet included are in the NEL SCP Local Arrangements Appendix 1. Relevant agencies who have been selected must act in accordance with the NEL SCP Local Arrangements.

The list of selected relevant agencies and other agencies included may change over time to reflect those present in our local footprint. The list will be revised and republished as appropriate. Selected relevant agencies and other organisations and agencies included in the NEL SCP Local Arrangements are subject to our scrutiny and assurance arrangements.

### **Early years settings, schools, colleges and other education providers**

The safeguarding partners gave full consideration to how education was represented in the NEL SCP Local Arrangements and education representatives input at both an operational and strategic level, aligned to the requirements of Working Together 2023. Safeguarding partners acknowledge the pivotal role that schools, colleges and other educational providers play in building resilience, safeguarding and promoting the welfare of children, as detailed in the statutory guidance Keeping Children Safe in Education 2024.

The Director for Education Inclusion and Integration is a member of the NEL SCPB, and the Deputy Service Director for Inclusion is a member of the Safeguarding Performance Practice Assurance Group and the Safeguarding Practice Learning and Development Group.

There are established, collaborative relationships with schools/academies and colleges. This includes the school child protection co-ordinators forum, associated safeguarding audit frameworks and the primary and secondary heads forum.

In addition, a number of local educational establishments are represented on the wider SCP sub groups. The NEL SCP Team provide a quarterly update to the schools Child Protection Co-ordinators meeting on learning from practice and key messages are weaved through routine communications to schools and settings. Schools and educational establishments are also actively involved in scrutiny and assurance activity.

Early years providers play a crucial role in safeguarding and promoting the welfare of children, as defined by their duties under Section 40 of the Childcare Act 2006. There are robust arrangements in place at a strategic and operational level to engage with early years providers to ensure they are fulfilling their safeguarding responsibilities, for example through safeguarding audits and line of sight meetings focussing on safeguarding

### Youth Custody and Residential Homes

The Youth Offending Service reports to the NEL SCP through the Local Authority Children's Services representative on the SCPB. The Youth Offending Service is also represented on our NEL SCP wider sub-groups. There are no Youth Custody homes within the local authority but those which are in the region will be required to report on arrangements as and when necessary.

There is representation from residential homes, which are in the area of the local authority, on our NEL SCP Multi-Agency Child Exploitation Panel (MACE). All residential homes for children within the area, including those provided by NEL Council and private sector organisations, are selected by the safeguarding partners as relevant agencies. There are mechanisms in place to engage residential homes in the NEL SCP Local Arrangements which will include the section 11 process and the local provider forum.

### Geographical Area

The partnership covers the geographical area of NEL as defined by the local authority boundary.

The geographical footprint for the NEL SCP Local Arrangements is the NEL Council local authority area.

This footprint corresponds with that of the Humber and North Yorkshire Integrated Care Board, which includes the NEL Health and Care Partnership. Humberside Police covers the NEL local authority area and three other local authority areas.

The safeguarding partners and other agencies included in these NEL SCP Local Arrangements will fulfil their statutory and legislative duties to safeguard and promote the welfare of children from NEL who live or are placed outside of our local authority area.

Likewise, the safeguarding partners and other agencies included in these NEL SCP Local Arrangements will fulfil their statutory and legislative duties to safeguard and promote the welfare of all children who live within the NEL local authority area including looked after children placed in NEL by other local authorities or those who move into our local area

## 4. Child Safeguarding Practice Reviews

The responsibility for how the system learns lessons from serious child safeguarding incidents, lies at a national level with the Child Safeguarding Practice Review Panel (the Panel) and at a local level with the safeguarding partners.

Serious child safeguarding cases are those in which:

- abuse or neglect of a child is known or suspected and
- the child has died or been seriously harmed

The three safeguarding partners must make arrangements to:

- identify serious child safeguarding cases which raise issues of importance in relation to the area
- commission and oversee the review of those cases, where they consider it appropriate for a review to be undertaken

In order to determine whether to carry out a local child safeguarding practice review, a Child Safeguarding Practice Review Group will be convened with the safeguarding partners' representatives as the core members.

Should a local child safeguarding practice review be undertaken, the Child Safeguarding Practice Review Group will continue to give oversight to the action plan until completion or with agreement from the safeguarding partners the action plan will be monitored by the Safeguarding Practice Learning and Development Group. The action plan will be finally signed off by the Delegated Safeguarding Partners at the NEL SCPB.

The NEL SCP policies and procedures outline the local process for identifying a serious child safeguarding case, notifying the safeguarding partners and the Panel, undertaking a rapid review and decision-making on whether to undertake a review. [Learning from practice | NELC](#). They also inform on commissioning, overseeing and publication of a review and how the findings, learning and identified improvements are embedded in practice to make a real impact on improving outcomes for children.

## 5. Scrutiny and Assurance

### Scrutiny and Assurance Framework

The NEL SCP Local Arrangements have been developed to create an environment that is conducive to robust scrutiny and constructive challenge. They include opportunities to proactively catch local agencies before they fall as well as a partnership approach to learning and development across the multi-agency children's safeguarding system.

Locally, there is a culture of challenge and holding partners to account. There are embedded systems and processes for professional challenge across the safeguarding system and evidence of scrutiny and assurance arrangements in place at all levels across our safeguarding partner organisations.

There is an ongoing drive and commitment to ensure continuous improvement leading to better outcomes and experiences for our children, young people and families and we continue to develop innovative approaches relating to scrutiny and assurance.

Through the NEL SCP Scrutiny and Assurance Framework, a range of mechanisms are in place to ensure scrutiny and assurance including independent scrutiny, which are:

- Section 11 process (Safeguarding Children Partnership audit)
- Education establishment audit
- Early years safeguarding audit
- Agency specific assurance events
- Thematic assurance events
- Practice learning line of sight events
- Partnership audits
- Independent Scrutiny officer activity
- Agency call ins

The NEL SCP will publish a report annually giving details of activity and the impact of that activity across the SCP.

- Working Together 2023 requires the safeguarding partners to ensure there are arrangements for effective independent scrutiny. The independent scrutiny role
- Provide safeguarding partners and relevant agencies with independent, rigorous, and effective support and challenge at both a strategic and operational level.
- Provide assurance to the whole system in judging the effectiveness of the multi-agency safeguarding arrangements through a range of scrutiny methods
- Ensure that statutory duties are being fulfilled, quality assurance mechanisms are in place, and that local child safeguarding practice reviews and national reviews are analysed, with key learning areas identified and effectively implemented across the safeguarding system
- Ensure that the voice of children and families is considered as part of scrutiny and that this is at the heart of arrangements through direct feedback, informing policy and practice
- Be regarded as a 'critical friend' and provide opportunities for two-way discussion and reflection between frontline practitioners and leaders. This will encourage and enable strong, clear, strategic leadership
- Provide independent advice when there are disagreements between agencies and safeguarding partners and facilitate escalation procedures
- Evaluate and contribute to multi-agency safeguarding published arrangements and the annual report, alongside feeding into the wider accountability systems such as inspections

### Independent scrutiny arrangements

The role of independent scrutiny is critical to provide assurance in judging the effectiveness of the NEL SCP Local Arrangements.

Independent Scrutiny Officers play a significant role in the NEL SCP Scrutiny and Assurance Framework and there is a small pool of Independent Scrutiny Officers from a range of backgrounds. This ensures different perspectives and provide a degree of flexibility and capacity to contribute to the scrutiny and assurance arrangements as required.

Independent scrutiny will:

- provide safeguarding partners and relevant agencies with independent, rigorous and effective support and challenge at both a strategic and operational level
- provide assurance in judging the effectiveness of multi-agency arrangements to safeguard and promote the welfare of all children in NEL

- ensure that statutory duties are being fulfilled, quality assurance mechanisms are in place and that local child safeguarding practice reviews and national reviews are analysed, with key learning areas identified and effectively implemented across the safeguarding system
- ensure that the voice of the children and families is considered as part of scrutiny and that this is at the heart of arrangements through direct feedback, informing policy and practice
- be regarded as a critical friend and provide opportunities for two way discussion and reflection between practitioners and leaders
- provide independent advice when there are disagreements between agencies and safeguarding partners and facilitate escalation procedures
- report to the safeguarding partners any recommendations from their scrutiny and assurance activities
- evaluate and contribute to multi-agency safeguarding published arrangements and the annual report, alongside feeding into the wider accountability frameworks such as inspections

The Independent Scrutiny Officer(s) main responsibilities are to:

- provide independent scrutiny and evaluation pertaining to agency specific and thematic assurance events and to practice learning line of sight events
- scrutinise the arrangements to identify and review serious child safeguarding cases
- scrutinise how well the safeguarding partners are providing strong leadership
- have a direct interface and engage with children, young people and families to determine the impact of the NEL SCP Local Arrangements
- have a direct interface with front line practitioners in order to have an informed perspective on practitioners' skills, knowledge and practice which enables them to fulfil their responsibilities within the NEL SCP Local Arrangements
- prepare written reports in relation to scrutiny and assurance activity
- attend and contribute to the NEL SCPB and other partnerships, events and meetings to present findings
- contribute to reciprocal peer review arrangements where arranged
- attend to represent an independent scrutiny perspective within individual safeguarding partners' scrutiny arrangements, if required
- attend and contribute to inspection activity as appropriate
- scrutinise the NEL SCP Local Arrangements and annual report prior to publication

In the event of any dispute between the safeguarding partners and/or relevant agencies or any local disputes relating to multi-agency practice, an Independent Scrutiny Officer may also assist with the dispute resolution process

## Learning and improvement

A key element of our scrutiny and assurance process is on learning and improvement. The Safeguarding Practice Learning and Development Group has representation across the three safeguarding partner organisations and other selected relevant agencies. The group is responsible for co-ordinating the outcomes of scrutiny and assurance activity that are multi-agency in nature. It will monitor, implement and review areas for development to ensure we positively impact on our commitment towards continuous improvements across frontline multi-agency practice. In addition, the group will disseminate learning from local child safeguarding practice reviews or multi-agency case audits and from other areas local and national child safeguarding practice reviews, other national reports and research.



There are also learning and improvement opportunities through the partnership groups that feed into the Safeguarding Practice Learning and Development Group. The groups also enable reflection on single agency audit and quality assurance of practice at key points along the safeguarding pathway, focussing particularly (although not exclusively) upon:

- safeguarding intervention within targeted services (both informal and formal)
- the interface between targeted services and the Integrated Multi Agency Partnership (IMAP)
- the work of the Integrated Multi Agency Partnership
- the work of children in need and child protection

Overall, the learning will contribute to further strengthening the safeguarding system, multi-agency practice and the nuanced approaches that services can develop.

## 6. Multi-agency Education and Training

Working Together 2023, identifies the provision of multi-agency safeguarding professional development and training as one of the key joint functions of the multi-agency safeguarding training and development.

Multi-agency training is important for supporting our collective understanding of local need and for practitioners to be effective in universal services and across the safeguarding pathway. The premise of multi-agency training is that it provides 'added value' and it is 'better together' in providing a collective understanding of the local needs of children and families the new and emerging threats.

Locally, there is an ongoing commitment to developing multi-agency education and training, which is underpinned by robust evaluation processes to ensure that the education and training programme is clearly focussed on the needs of partners to deliver effective services. In addition to needs analysis, the education and training programme is informed by learning from local and national practice reviews, local scrutiny and assurance events and research. Through system leaders, key officers and the NEL SCP Team as appropriate, there will be further developments to enhance the commissioning, delivery, monitoring and evaluation of the effectiveness and impact of multi-agency education and training. The outcomes will be fed into partnership processes and included in the annual report.

A NEL SCP education and training programme is published on the SCP website and is aligned to the SCP priorities and statutory functions. Awareness, intermediate and masterclass education and training is available. The education and training programme is flexible, includes different methodologies e.g. e-learning, workbooks, face-to-face and virtual training, updated and republished as required to reflect local need. Continuous learning, a collective understanding of new and emerging threats, trends and issues, familiarising ourselves with evidenced based practice about what works, utilising research and ultimately providing the multi-agency children's workforce with the knowledge, skills and mind-sets to transform the rhetoric of training into day to day practice is key to improving outcomes for our children, young people and families.



In addition to training, there will also be development opportunities focussed on information sessions, practice forums and conferences. These development activities promote putting theory and research into practice, developing evidence-based practice and expertise, sharing perspectives and learning and enhancing confidence in helping and protecting children and young people. Publications that support learning and that may be of interest will also be made available through communications routes and published on the website.

The NEL SCP Education and Training Strategy seeks to ensure safeguarding training/learning activities are based on local need, and meet the needs of practitioners, in being able to recognise and respond to need and risk. In addition, it aims to measure the impact of safeguarding training on practice and improving outcomes for children and young people. We will ensure that through the partnership structure and functioning that learning from child safeguarding practice reviews, voice of the child, findings / improvement from audits and national research and best practice is embedded into training and informs local practice and continuous learning.

Continuous learning is key to improving outcomes for our children, young people and families. Through our approach to analysis of data, assurance activity and voice of children and practitioners we will form a collective understanding of new and emerging threats, trends and issues, familiarising ourselves with evidenced based practice about what works, utilising research. This will inform an ongoing review of provision and availability of safeguarding children training and work force development opportunities and the identification of gaps which will inform development to meet the needs of the workforce.

## 7. Funding Arrangements

The NEL SCP is committed to an agreed equitable split of the costs associated with the new arrangements. A three year finance and resourcing plan has been agreed consistent with meeting the SCP functions and priority areas of focus. The plan outlines the contributions from the three safeguarding partner organisations, and those by wider agencies and resources identified for commissioning independent scrutiny. Details of funding will be published in the annual report. Any requests for additional funding in year will be considered by the safeguarding partners and agreed through the appropriate governance routes.

The safeguarding partners have also committed to providing in kind resources through relevant system leaders and key officers across their respective organisations.

In the event of a child safeguarding practice review, funding will be met by the safeguarding partner organisations and where necessary, each partner will contribute equitable and proportionate funding over and above the normal allocation in order to fulfil the full costs of any review.

In addition, safeguarding partner organisations will contribute to the development and delivery of the education and training programme, communications, marketing and events.

## 8. Voice and Engagement

The Children, Young People and Families 'Stronger Together' Strategy sets out the local commitment to putting children, young people and families at the centre of all we do. In the context of our practice approach, and our focus on relationships, we will listen to their views and lived experiences, needs and vulnerabilities. Through working together with them as partners and experts in their own lives, we will co-produce local services and support which meet their needs, leading to better outcomes.

Across the partnership, we are committed to enabling opportunities at all levels to listen to and take account of the views and lived experiences of our children, young people and families. From a whole partnership perspective, we are committed to:

### At an individual level, we must

- ensure there are opportunities to gain the views and feedback of individual children, young people and families; and make every contact count
- ensure that children, young people and families are able to have a say on issues that directly impact on their lives, experiences or outcomes
- ensure that individual children, young people and families have access to self directed information and support through a trusted digital offer

### At a service level, we must:

- ensure there are voice and engagement groups/partnerships/mechanisms to listen to and take account of experiences of services and provision
- ensure the collective views of children, young people and families are taken into account to shape and influence service developments
- include children, young people, parents/carers in recruitment and commissioning processes (where applicable)

### At a strategic level, we must:

- ensure the views and lived experiences of children, young people and families are included in needs assessments, priority setting and strategic planning frameworks
- include children, young people, parents/carers in joint commissioning, assurance / scrutiny, partnerships and governance processes, and develop their opportunities for challenge, power and influence
- show evidence of voice and engagement, and its impact and outcomes across the system

### To enable engagement, we must:

- ensure clear, open, transparent communications, representative voice and engagement opportunities and fair access
- provide feedback on the outcomes of voice and engagement activity, and share across the partnership as appropriate to ensure we make the best use of information available to us to ensure it shapes and influences service design and commissioning, and to encourage and support ongoing relationships and trust
- challenge and support each other to work within these engagement principles

We work with and take account of the views and lived experiences of children, young people and families through established groups, forums and mechanisms where they can have their say, share their views and experiences, challenge and support local decision makers and shape and influence strategic planning, commissioning and service provision at an individual, service and strategic level.

We also encourage and support children and young people to have their say through other mechanisms, including but not exhaustive:

- The voice of the child is considered as part of the scrutiny and assurance framework
- Children, young people and families are involved in the scrutiny and assurance framework, as appropriate
- Voice of the child and understanding the child's lived experience guidance published
- Voice and engagement input to be presented at each SCPB
- Routine and ad hoc surveys i.e. Adolescent lifestyle survey
- Involvement of young people in commissioning and recruitment

Emerging issues, themes, impacts and outcomes of voice and engagement activity are fed into key subgroups and wider partnership arrangements as appropriate.

The NEL SCP annual report evidences how the NEL SCP Local Arrangements take account of and include the views and lived experiences of children and families as required by Working Together 2023.

## 9. Performance and Analysis

The NEL SCP Local Arrangements makes use of performance data and intelligence to assess the effectiveness of the help and support being provided to children and families across the safeguarding system (from early help to children in need and in need of protection, children in care and care leavers, including children and young people with special educational needs and/or disabilities).

Analysis and evaluation of performance data and intelligence, including the outcomes of scrutiny and assurance, enables an understanding and synthesis of the whole system and contributes to informed decision making. It also enables safeguarding partners and agencies to be confident that decisions and 'risks' are shared and helps to ensure high quality and safe practice.

Performance data and intelligence is routinely collated, analysed and reported into the partnership arrangements on a quarterly basis, as follows:

<b>NEL SCPB</b>	A performance dashboard is presented on a quarterly basis. This is inclusive of key performance data and intelligence, including analysis and evaluation, exceptions and recommendations across the safeguarding system
<b>Safeguarding Performance Practice and Improvement Group</b>	The group has oversight of the analysis of the performance dashboard and practice across the safeguarding system. Agency data and intelligence is provided through the quarterly agency assurance reports to the group. The group receive data and analysis from the Learning Audit Development Group from multi agency audits of practice aligned to the SCP priorities
<b>Safeguarding Practice Learning and Development Group</b>	The group has oversight of the outcomes of scrutiny and assurance activity that are multi-agency in nature and disseminates learning from local child safeguarding practice reviews and from other areas local and national child safeguarding practice reviews, other national reports and research. The group has oversight of multi-agency education and training and communication and stakeholder engagement activity. The group has oversight of data and analysis through the quarterly SCP performance dashboard
<b>Early Help Strategic Group</b>	The performance dashboard is considered on a quarterly basis in focussing on early help including activity and impact aligned to the early help strategic delivery plan
<b>Safeguarding Practice Thematic Strategic Group</b>	The performance dashboard is considered on a quarterly basis in focussing on progress against the delivery of the Neglect and Child Sexual Abuse priorities. Data and intelligence profiles pertaining key areas of focus are available on a regular basis through key partnership groups
<b>Child Exploitation Strategic Group</b>	The performance dashboard is considered on a quarterly basis in focussing on progress against the delivery of the Child Exploitation strategic plan. Data and intelligence from partner agencies is received in informing the development of the local child exploitation profile

This list is not exhaustive and there are other points within the NEL SCP Local Arrangements for performance data and intelligence monitoring and analysis.

Quarterly performance reporting to the NEL SCPB and the sub groups chairs reports provide evidence of emerging issues and themes, and clear recommendations for the NEL SCPB to consider.

The NEL SCP safeguarding policies and procedures provide comprehensive information and multi-agency practice guidance on multi-agency safeguarding working arrangements and expectations as required by Working Together 2023 (link - [Procedures and resources for professionals | NELC](#))

Expectations and clear guidance in respect of information is published on the NEL SCP and is consistent with Department for Education information sharing advice for practitioners providing safeguarding services for children, young people, parents and carers.

## 10. Annual Report and Review

The annual report will set out what has been done as a result of NEL SCP Local Arrangements and how effective they have been in practice. As part of this, the annual report will include:

- evidence of the impact of the work of the safeguarding partners and agencies on outcomes for children and families
- an analysis of any areas where there has been little or no evidence of progress on agreed priorities
- a record of actions taken by the safeguarding partners in the report's period (or planned to be taken) to implement the recommendations of any local child safeguarding practice reviews or national safeguarding practice reviews
- ways in which the partners have sought and utilised feedback from children, young people and families to inform their work and influence service provision

The report will also include agreed priority areas of focus and delivery plan actions.

The annual report will be endorsed by the NEL SCPB on behalf of the NEL Council Chief Executive, Humber and North Yorkshire Integrated Care Board Executive Director for Nursing and Quality, and the Chief Officer of Humberside Police. Following endorsement, the report will be distributed through relevant routes across the three safeguarding partners (via NEL Council's democratic functions, the Humber and North Yorkshire Integrated Care Board and Office of the Police and Crime Commissioner). It will also be distributed across relevant partnership arrangements. The annual report will be subject to independent scrutiny by the Independent Scrutiny Officer(s) prior to final publication.

## Review and Governance

These NEL SCP Local Arrangements has been developed by the partnership in consultation with relevant agencies and endorsed by the NEL SCPB. These arrangements will be formally reviewed on an annual basis and in year as appropriate, and all changes will be agreed with the three safeguarding partners and the SCPB.

Progress against the priority areas of focus and delivery plan actions will be monitored through the partnership and governance arrangements, and ultimate oversight via the SCPB.

NEL aspires to be a place in which healthy and constructive challenge is seen as a positive and not a threat; where we learn from one another and respect others' views and opinions; and where we always strive to resolve differences.

The NEL SCP have established a multi-agency dispute resolution agreement for the resolution of concerns and disputes at a strategic level with a clear process and timescales.

When a range of professionals and agencies are undertaking assessments and providing services for children, there will inevitably be times when perspectives differ and conflicts of opinion or views give rise to challenge and or disagreement. The NEL SCP Escalation Procedure provides a timely and straight forward way of seeking resolution at an operational level in the event of any disagreement between practitioners involved in the NEL SCP Local Arrangements relating to multi-agency practice. This is to enable the best outcome for the child and to support effective multi-agency working.

## 11. Priorities for 2025/26

### Priority areas of focus for 2025 / 26

The priority areas of focus have been identified through performance analysis, local practice, learning from local reviews including the children's lived experiences, the experiences of practitioners and on national research. The priority areas of focus remain the same as 2024 to 2025, in order to build on the progress and impact made by further developing local arrangements and the quality of practice in these areas.

Priority areas of focus			
Priority area of focus	Lead partnership	Governance	Anticipated action and system change
Embed the NEL SCP Neglect Strategy to respond to children at risk of and experiencing neglect, with a focus on the impact of the neglect training and tool	Safeguarding Practice Thematic Strategic Group	NEL SCPB	<ul style="list-style-type: none"> <li>Implement and oversee the impact and effectiveness of the Neglect Strategy delivery plan</li> <li>The use of neglect screening tool and wider neglect toolkit to be embedded and used consistently across NEL. This will be through clear pathways to improve uniformity in neglect cases across the partnership</li> <li>The introduction of a local championing approach to support a culture of consistency in cases where there are indicators of neglect</li> <li>Multi-agency neglect training to continue to be delivered across partner agencies on indicators of neglect, the impact on children, roles and responsibilities of agencies</li> <li>Hold a multi-agency thematic assurance event, led by an Independent Scrutiny Officer, to include case audit/review of child neglect cases</li> <li>Raise community awareness and engagement, underpinned by the creation of a communications plan to develop and deliver internal and external communications on neglect</li> </ul>



Priority areas of focus			
Priority area of focus	Lead partnership	Governance	Anticipated action and system change
Embed the Child Sexual Abuse Strategy to respond to children at risk of and experiencing child sexual abuse, with a focus on awareness raising and assessment of risk and need	Safeguarding Practice Thematic Strategic Group	NEL SCPB	<ul style="list-style-type: none"> <li>Implement and oversee the impact and effectiveness of the Child Sexual Abuse Strategy delivery plan</li> <li>Multi-agency child sexual abuse training to continue to be delivered across partner agencies on indicators of CSA the impact on children, roles and responsibilities of agencies</li> <li>The use of Child Sexual Abuse Risk Assessment tool to be embedded and used consistently</li> <li>Hold a multi-agency thematic assurance event, led by an Independent Scrutiny Officer, to include case audit/review of child sexual abuse cases</li> <li>Further development of data in understanding the local prevalence of child sexual abuse and in informing the local response</li> <li>Raise community awareness and engagement, underpinned by the creation of a communications plan to develop and deliver internal and external communications on child sexual abuse</li> </ul>
Embed the Early Help Strategy to further embed the focus on helping and supporting children and families at the earliest point, and to reduce the need for statutory intervention	Early Help Strategic Group	SCPB	<ul style="list-style-type: none"> <li>Implement and oversee the impact and effectiveness of the revised Early Help Strategy delivery plan</li> <li>Further training and support to partner agencies to identify the needs of children and families at the earliest opportunity</li> <li>Further enhance the early help training offer, including (but not exhaustive) the development of early help training and working with resistant families also the impact of domestic abuse and neglect on families</li> <li>To reintroduce the fed-up programme of support to families to reduce the impact of parental substance use f</li> </ul>
Further develop the multi-agency approach to Child Exploitation, including Sexual Exploitation	Child Exploitation Strategic Group	NEL SCPB	<ul style="list-style-type: none"> <li>Implement and oversee the impact and effectiveness of Child Exploitation Strategy and delivery plan to maximise opportunities to prepare, prevent, protect and pursue leading to better experiences and outcomes</li> <li>Review the current child exploitation practice guidance</li> <li>Develop a local child exploitation profile</li> </ul>

Priority areas of focus			
Priority area of focus	Lead partnership	Governance	Anticipated action and system change
with a focus on transitions			<ul style="list-style-type: none"> <li>• Hold a multi-agency thematic assurance event, led by an Independent Scrutiny Officer, to include case audit/review of child criminal and sexual exploitation cases focused on transition to adulthood, observation of a MACE meeting/MACE triage and a desktop review on the impact of MACE/MACE triage</li> <li>• A SCP Child Exploitation risk assessment toolkit to be developed to include online exploitation</li> <li>• Develop a further understanding of the local youth offer in providing safe spaces for children and young people</li> </ul>

### NEL SCP Local Arrangements delivery plan 2025 / 26

As Delegated Safeguarding Partners and their respective safeguarding partner organisations, and with relevant agencies, we will continue to listen, learn, review and adapt in order to ensure our NEL SCP Local Arrangements best meet the needs of the children, young people and families in NEL, so they grow up happy and healthy, safe in their homes and communities with people that love them

As well as the priority areas of focus and associated actions, our NEL SCP Local Arrangements are underpinned by a delivery plan, which is built around the following areas:

- Actions carried forward from the previous development plan, where progress has been made, but where a further focus is required
- Recommendations from independent scrutiny of the NEL SCP Local Arrangements
- Actions associated with key policy drivers

Development Plan		
Priority Area Focus	Lead Partnership	Anticipated Action and System Change
Scrutiny and Assurance (including independent scrutiny)	Safeguarding Practice Learning and Development Group	<p>Develop and implement our scrutiny and assurance programme which will contribute to improved practice and outcomes for children</p> <p>In addition to the independent scrutiny in association with the priority areas of focus, as a minimum, there will also be independent scrutiny in relation to:</p> <ul style="list-style-type: none"> <li>• the Section 11 Annual Audit</li> <li>• an audit of the effectiveness of the SCP Local Arrangements</li> <li>• Family network family led approach</li> </ul>



<b>Development Plan</b>		
<b>Priority Area Focus</b>	<b>Lead Partnership</b>	<b>Anticipated Action and System Change</b>
		We will also explore developing the involvement of children, young people and families in our scrutiny and assurance processes
Data Intelligence and Performance	SCPb	Further develop the quality of the data analysis of the performance dashboard and framework in evidencing the impact of the delivery of the four SCP priorities and key functions understanding across the partnership to underpin our NEL SCP Local Arrangements
Child and Family Engagement	Safeguarding Practice Learning and Development Group	<p>Further develop ways in which the partners seek and use feedback from children and families to inform their work and influence decision making</p> <p>Commit to ensuring that each partner agency share work undertaken and impact of voice and engagement as part of the standing agenda item at SCPb meetings</p>
Child Safeguarding Practice Reviews	Safeguarding Practice Learning and Development Group	Review and build on the annual independent scrutiny of the identification and notification process for serious child safeguarding cases to seek assurance of our local decision making and partnership processes
Education and Training	Safeguarding Practice Learning and Development Group	<p>Deliver the revised training and education offer across the partnership aligned to the SCP priorities</p> <p>Continue the development of eLearning safeguarding introduction to safeguarding</p> <p>Develop a survey to be disseminated across the partnership to generate understanding regarding the impact of training</p>
Safeguarding practice standards	Safeguarding Practice Learning and Development Group	The development and implementation of a local championing approach to specific safeguarding themes based on practice standards, practice guidance and tools aligned to the four SCP priorities
Funding	SCPb	Continue to review and increase the safeguarding partners contributions to the NEL SCP, and continue to be creative in the way in which we deploy the funding, and available capacity, to ensure we continue to develop and deliver our NEL SCP Local Arrangements
Communication and Stakeholder engagement	SCPb	Review and revise the SCP Communication Strategy in supporting the delivery of communication / awareness raising in delivering the NEL SCP Local Arrangements

Development Plan		
Priority Area Focus	Lead Partnership	Anticipated Action and System Change
		<p>Hold an event to share the key messages from the NEL SCP Annual Report 2024/25 and to celebrate the partnership contributions to the NEL SCP Local Arrangements</p> <p>Further develop the new SCP dedicated website in ensuring it fully supports the partnership in the delivery of the NEL SCP Local Arrangements and provides practitioners with resources, procedures and training in supporting effective practice</p>
Responding to National Reforms	SCPB	<p>Review of NEL SCP Local Arrangements and associated governance arrangements in response to Keeping Children Safe Helping Families Thrive national reforms</p> <p>Focus on data development, and opportunities to further explore alignment with National Children's Social Care Framework</p>
Governance	SCPB	<p>Review and refresh the governance structure, including subgroups and membership</p> <p>Develop operational standards to further enhance the quality of governance and reporting arrangements</p>

### 13. Appendix 1: Relevant Agencies

#### NEL SAFEGUARDING CHILDREN PARTNERSHIP

##### Defined Relevant Agencies

##### EDUCATION AND CHILDCARE

##### Local authority-maintained schools (under section 342 of the Education Act 1996)

###### Nursery

- Great Coates Village Nursery
- Scartho Village Nursery

###### Primary

- Coombs Briggs Primary School
- Grange Primary School
- Humberston Church of England Primary School
- Queen Mary Infant and Nursery School
- Scartho Infants Primary School
- Stallingborough Church of England Primary School
- Stanford Junior and Infant School
- Western Primary School

###### Secondary

No local authority-maintained schools

##### Academies

###### Primary

- Bursar Primary Academy
- Canon Peter Hall Church of England Primary Academy
- East Ravendale Primary Academy
- Edward Heneage Primary Academy
- Eastfield Primary Academy
- Elliston Primary Academy
- Enfield New Waltham Primary Academy
- Fairfield Primary Academy
- Great Coates Primary Academy
- Healing Primary Academy
- Humberston Cloverfield's Primary Academy
- Laceby Acres Primary Academy
- Lisle Marsden Primary Academy
- Little Coates Primary Academy
- Macaulay Primary Academy
- Middlethorpe Primary Academy
- New Waltham Primary Academy
- Oasis Academy Nunsthorpe
- Old Clee Primary Academy
- Ormiston South Parade Primary Academy
- Pilgrim Primary Academy
- Reynolds Primary Academy
- Scartho Juniors Academy

- Signhills Infants Academy
- Signhills Junior Academy
- South Parade Primary Academy
- Springfield Primary Academy
- Strand Primary Academy
- St Joseph's Voluntary Aided Catholic Academy
- St Marys Voluntary Aided Catholic Academy
- St Peters Church of England Primary Academy
- Thrunscoe Primary Academy
- Waltham Leas Primary Academy
- Weelsby Primary Academy
- Welholme Primary Academy
- William Barcroft Junior Academy
- Woodlands Primary Academy
- Wybers Wood Primary Academy
- Yarborough Primary Academy

### **Secondary**

- Beacon Academy
- Cleethorpes Academy
- The Academy Grimsby (TAG) (key stage 4 only)
- Havelock Academy
- Healing Science Academy
- Humberston Academy
- John Whitgift Academy
- Oasis Academy Immingham
- Oasis Academy Wintringham
- Ormiston Maritime Academy
- Toll Bar Academy

### **Special School Academies**

- Cambridge Park Special School Academy
- Humberston Park Special School Academy

### **Pupil Referral Unit (PRU) Academies**

- Sevenhills Academy
- Phoenix Park Academy

### **Governing bodies (of local authority-maintained nursery, primary, secondary, special and pupil referral unit schools and academies, further education and higher education providers)**

- All governing bodies

### **Any providers of further and higher education or training**

- Franklin College
- Grimsby Institute
- Linkage (special post-16 provision)

### **Independent Schools**

- Best Future
- Orchard Education

- St James School
- St Martins School

### **Childcare providers**

- All childcare providers

### **Children's Centres**

- Reynolds
- Highgate
- East Marsh
- Central
- Immingham
- Queensway
- Broadway
- Nunsthorpe and Bradley Park
- Riverside
- Scartho
- West Marsh

## **HEALTH AND SOCIAL CARE**

### **HS England**

- NHS England North (Yorkshire and Humber)

### **NHS Trust**

- East Midlands Ambulance Service NHS Trust

### **NHS Foundation Trusts**

- Northern Lincolnshire and Goole NHS Foundation Trust
- Lincolnshire Partnership NHS Foundation Trust

### **Health providers**

- Navigo
- Care Plus Group
- Primary Care

### **Adoption Support Agency**

- NEL Council Adoption Service

### **Registered adoption society (also known as voluntary adoption agency)**

- No local provision

### **Fostering Agency**

- NEL Council Fostering Service
- Treehouse

### **Children's Homes**

- Eight locations in NEL

### **Residential holiday schemes for disabled children**

- No local provision

## CRIMINAL JUSTICE

### **Child and Family Court Advisory and Support Service (CAFCASS)**

- CAFCASS South Yorkshire and Humberside

### **Probation Services**

- National Probation Service (North Lincolnshire and NEL)
- Community Rehabilitation Company (Humberside, Lincolnshire and North Yorkshire)

### **Youth Offending Hubs**

- NEL Youth Offending Service

## POLICE AND IMMIGRATION

### **British Transport Police**

- British Transport Police Midlands

### **Port Police Forces**

- Port Police Force

### **Border Police**

- Border Police

## OTHERS

- Salvation Army
- Blue Door
- NSPCC
- Other charities commissioned by safeguarding partners
- Religious Organisations (as set out in the school admissions regulations 2012)
- All sport and leisure providers
- Tree House Care
- Cat Zero
- Climb 4
- Compass Go
- Door Step
- Oasis Community Hub
- Women's Aid
- YMCA
- Young Minds Matter

## OTHER AGENCIES INCLUDED IN THE SAFEGUARDING

### **Voluntary Community Social Enterprise**

- Voluntary Action NEL
- North Bank Forum
- Carers Support Centre
- Others significant to the area

### **Faith-based organisations**

- All faith-based organisations

**Private sector organisations**

- Private sector organisations who provide activities, support and services to children, young people and families

**Fire and rescue service**

- Humberside Fire and Rescue Service

**Health providers**

- Virgin Care
- We Are With You