

# Parent/Carer guide to choosing safe out of school clubs



An out of school setting can mean many things, from places like community and youth centres, sports clubs, and places of worship to individuals offering tuition in their home or providing coaching at a playing field or local park.

## Did you know...

**Out of school settings are not inspected or assessed** - so there is no checking of the quality and safety of their provision. As a minimum organisations or clubs working with children and young people should have safeguarding policies in place to reduce the risk of harm.

## As a parent/carers...

You will want to know that your child is safe whilst they are not in your care, and feel reassured that should a matter arise, that it will be dealt with timely, appropriately and safely!

One of the biggest indicators of how well a setting will care for your child is reflected in how other children and parents/carers respond to the setting. Are they:

- Happy
- Keen to attend
- Speaking highly of the setting

## If you have a concern...

About the safety of a child and/or concern about staff member/volunteer contact the Safeguarding and Partnership Hub:

Mon to Thurs 8.30am to 5pm Fri 8.30 am to 4.30pm

**01472 326292 (option 2, option 2)**

Out of Hours Emergency Duty Team contact (Mon-Thurs: 5pm-8:30am., Fri-Mon: 4:30pm-8:30am)

**01472 326292 (option 2)**

**If you think a child is at an immediate risk of harm contact 999 urgently!**

## What to look and ask for...



Does the venue look and feel safe and secure - who can enter the building during the activity session?



Are there enough staff/volunteers for the number of children taking part?



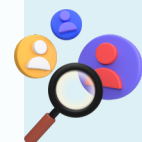
Do they have safeguarding and health and safety policies that can be seen and read by parents?



Who is the named safeguarding lead person and how do you contact this person to raise a concern?



What training and qualifications do the staff and volunteers have to look after your child?



Have all staff and volunteers been vetted to ensure they are safe to look after your child?



Have you been asked:  
For medical information  
Emergency contact details  
Permission for photos and how they are shared/used

## For more information visit...

North East Lincs  
Families First  
Information Service  
Website

North East Lincs  
Safeguarding Children  
Partnership Website:

