

North East Lincolnshire Corporate and Community Parenting Quarterly Newsletter December 2025

Welcome to the NEL Corporate and Community Parenting newsletter!

This newsletter is published on a quarterly basis, following meetings of the Corporate and Community Parenting Board, and will celebrate the positive news of our partnership approach to supporting the children in our care and care leavers.

It will also include information on any upcoming training opportunities and events, as well as any relevant legislation or guidance to help us to be the best possible Corporate and Community Parents for our children.

Corporate and Community Parenting Board Meeting - 29th September 2025

At the latest Corporate and Community Parenting Board meeting, the Chair proudly celebrated the exceptional outcome of the recent ILACs inspection, which recognised Leadership as outstanding and awarded a "Good" rating for Children in our Care and Care Leavers. The Board acknowledged the importance of building on this success and thanked everyone for their dedication in achieving such progress.

Updates were shared on Voice and Influence initiatives, including the Influencers group's work, the Bridge group's engagement with a government minister, and preparations for the upcoming Virtual School Conference. The Buddy independent visitor programme continues to thrive, alongside the formation of a care leavers' voice group and the transition of the Advocacy service into the Local Authority from October 2025. Creative Conversation sessions remain a vital platform for young people to shape Board discussions, with future topics including health, community safety, and play.

The Board celebrated all children's homes now being rated "Good" and discussed strengthening oversight for out-of-area placements. Annual reports for Fostering, Adoption, and Private Fostering were received, and the IRO Annual Report was unanimously approved - highlighting improved engagement, timely reviews, and the success of Bake Off sessions.

There was an inspiring update on the success of the Summer Scheme. This saw twelve care leavers begin the six-week programme, with nine completing it. Of those, three were offered full-time apprenticeships, one is set to join the Council's graduate programme after completing their university degree, and another secured a placement elsewhere. Feedback from participants highlighted a marked increase in confidence, which was warmly received.

Progress on the upcoming Family Enterprise scheme, launched during the Corporate and Community Parenting Fortnight Partnership Event on 5th November, was also shared. With CPO confirmed as the programme provider and branding designed by a young person, this initiative aims to collaborate with foster-friendly businesses. As part of this, mentorship and business setup support are being explored, with care leavers shaping the scheme's content to ensure it meets their needs. The Family Enterprise was praised as a powerful example of collective support in action, generating strong enthusiasm for its future.

The Chair closed the meeting by inviting partners to pledge their support for children and young people – particularly over the Christmas period.

Massive thanks goes to the young people who attended the Board

meeting, who shared powerful personal insights with the other Board members.

Sub group Updates



Education

The Board has been assured that the outcomes from the end of the last academic year were not reflective of the norm. In response, enhanced progress monitoring systems have been implemented to ensure timely identification and delivery of support. A new live reporting mechanism is also now in place to strengthen oversight and responsiveness.

It was confirmed that each child's educational journey is closely monitored, with strengthened Personal Education Plan (PEP) processes in place. Where a child is not in full-time education, challenge is applied and support plans are swiftly implemented. Attendance and access are actively tracked to ensure progress, and data on these interventions will be included in future Board reports to evaluate impact. The Board was urged to take collective ownership of this issue and to champion the educational rights of all children in our care.

A key focus for the subgroup moving forward is the fostering friendly offers pledged by schools.

Help and Protection

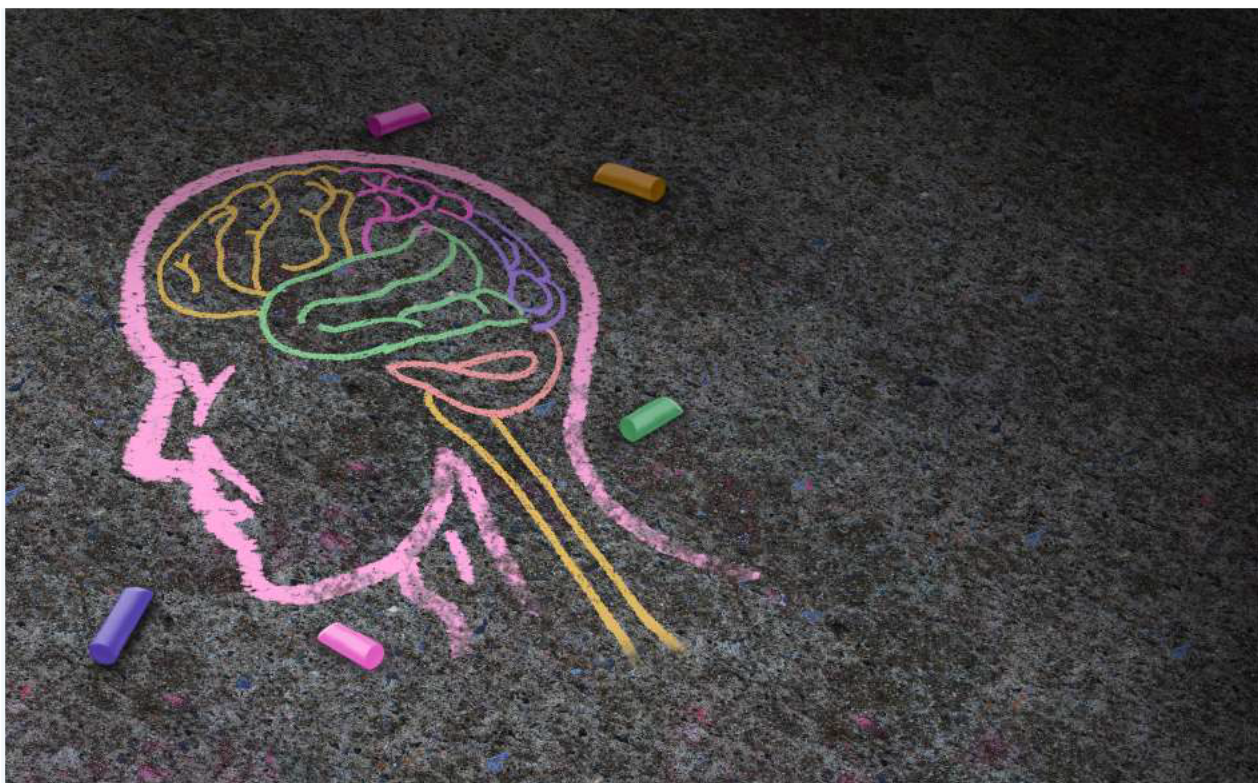
It was reported that a new Education Health Care Plans Co-ordinator, with a focus on social care, has now taken up post.

A recent rise in the number of unaccompanied asylum-seeking children in the local area was highlighted.

Concerns were raised regarding limited attendance and engagement within the subgroup, which has hindered effective reporting to the Board. As a result, a development session to clarify the subgroup's remit and review its membership is being considered.

Additionally, while data on key focus areas has been requested, challenges in embedding this work persist. It was agreed that this matter will be brought forward at the upcoming Safeguarding Children's Partnership Board.





Health

As requested at the last Board meeting, a detailed update on Navigo waiting times was provided, highlighting improvements and ongoing challenges across mental health services.

It was noted that figures with North East Lincolnshire outperform statistical neighbours, although room for improvement was also acknowledged.

Thanks were extended to ICB colleagues for their contributions and the support received in a challenging environment.

Questions around sexual health support for care leavers prompted a review of the current offer, including consideration of tailored drop-ins and metrics that reflect care leavers' priorities. The scope of this support is to be clarified.

Housing

The subgroup's Terms of Reference have now been approved, and membership is under active review.

Efforts continue to embed robust processes that ensure care leavers have

access to safe and secure housing. A new Assistant Director of Housing is expected to take up post shortly, which will further support this work.

Strengthening support for those with more complex needs is a key priority, and the recently implemented Corporate Landlord policy was celebrated as a positive step toward addressing the housing needs of care-experienced individuals.





Champions

A lifelong offer for our care leavers has been implemented and will continue to be strengthened, specifically in terms of the partnership offer.

The importance of partnerships was emphasised, with work continuing to be undertaken to ensure that the best-placed partners are involved in all discussions.

If you would like to be part of this, and add your voice to the championing of Corporate and Community Parenting, then please contact: **corporateparenting@nelincs.gov.uk**

Corporate and Community Parenting Fortnight

Over the past two weeks, North East Lincolnshire Council has marked **Corporate and Community Parenting Fortnight** with an incredible programme of events, celebrations, and opportunities to reflect on the role we all play in supporting our children and young people.

✦ Highlights included the Halloween bake-off, the Halloween disco, and the much-loved “Ready Steady Come Dine With Me” in our children’s homes. The fortnight culminated in the inspiring YOUNique Awards, filling the Town Hall with love, pride, and celebration of our amazing children, young people, and carers.

🤝 Alongside the fun, there were moments to challenge ourselves and recognise the difference we can all make as Corporate and Community Parents. From the Council leadership forum and the Cleethorpes Park Run takeover, to the launch of the Family Enterprise Scheme, and the Foster Friendly Brunch, the message was clear: everyone has a role to play, and together we can achieve so much.

💖 Throughout the fortnight, we were reminded of the extraordinary power of love, resilience, and partnership. We saw the dedication of foster carers, the talent and character of our young people, and the strength that comes when carers, professionals, community members, and young people work side by side.

📧 Keep an eye out for a **special newsletter dedicated to the fortnight**, which will share more stories, highlights, and reflections.

Upcoming Events

Upcoming events and activities include:

- 22nd December - Christmas Bake Off @Nunsthorpe Family Hub

If you would like to know more about Corporate and Community Parenting, please go to the website via: [**Corporate and Community Parenting | NELC**](#)

or contact: **corporateparenting@nelincs.gov.uk**

If you would like to know more about Fostering, please go to the website via: [**Fostering in North East Lincolnshire | NELC**](#)

or contact the Fostering team on: **fosteringandadoption@nelincs.gov.uk**