

# North East Lincolnshire Corporate and Community Parenting Quarterly Newsletter

May 2026



**Welcome to the NEL Corporate and Community Parenting  
newsletter!**

## **Corporate and Community Parenting Board Meeting - 16th March 2026**

Corporate and Community Parenting Board Meeting - 16th March 2026

This quarter saw strong progress across our Corporate and Community Parenting priorities.

Children and young people's voices continue to shape our work, including development of a clearer Corporate and Community Parenting offer, built around the Corporate and Community Parenting Promise so that children, young people, and carers can easily see what support sits behind each commitment. North East Lincolnshire also hosted the Regional Care Leavers event, which received very positive feedback from those who attended.

Key themes include growing participation and support: requests for independent advocacy have increased and we are strengthening awareness and access for children living out of area and for those with SEND. Attendance at review meetings has also risen, with feedback showing children feel more involved and better informed about their plans. Young people continued to take part in positive activities and events, including work by the Bridge group to inform the Virtual School Conference and completing the Humber Night

Challenge, while Buddies capacity has now grown above the national average, ensuring that more children can access an independent visitor.

The Questions and Creative Conversation for this Board focused on feeling safe. Partners welcomed the honest feedback from children and young people and agreed actions to take forward together.

Fourteen children and young people completed the Quarterly Questions. Themes included feeling less safe in some parks and poorly lit streets, alongside concerns about crime, behaviours, and violence and the impact this can have on confidence and day-to-day choices.

Young people suggested improved lighting and greater visible support through an increased police and community safety officer presence. Trusted adults and well-kept spaces were also highlighted as helping people feel safer.

These responses then shaped the Creative Conversation, focusing on building confidence and making sure young people know what support is available.

Partners shared practical measures that help people feel safer, including reporting anti-social behaviour, late-running bus services and the positive impact of the Angel Street scheme. The use of CCTV cameras was noted, alongside opportunities to improve lighting at Patrick Street underpass and Ainslie Park.

The Board also reflected on how perceptions of safety can be influenced by behaviour and what is shared online and reinforced that support is available. Members discussed strengthening trust through consistent responses, challenging stigma about care experienced young people, and sharing simple safety advice (for example, seeking help from venue staff if worried when out).

Partners agreed actions to build on this work and will progress these together, keeping young people's safety, confidence and access to support at the centre. Young people described the session as valuable and validating, reflecting a shared commitment to listen and act.

It was with pride that the Board reflected on the positive impact of the Family Enterprise, as well as on being selected as one of seven authorities in the Kinship Zone pilot programme, focusing on improved financial support for kinship carers and preventative family network support packages.

Board development also continues, with recent LGA sessions strengthening understanding of corporate and community parenting roles and responsibilities and informing the updated delivery and development plan.

## **Sub group Updates**

### **Education**



The subgroup reported that, while persistent absence remains higher than desired, there has been a reduction over the past month.

School exclusion and suspension continue to be a challenge; however, a recent permanent exclusion involving a child in our care has been overturned. Work is underway to strengthen early planning for children who have been suspended or are at risk of suspension, including targeted support from the Virtual School

through visits to individual schools.

In addition, the Aspiration and Success subgroup has now been disbanded, as it is no longer required following the introduction of monthly NEET panel meetings.

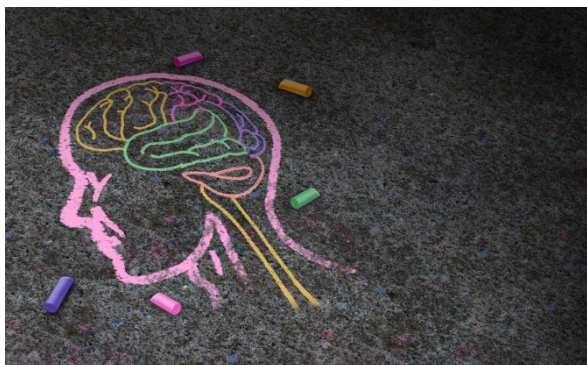
## **Help and Protection**



It was shared that work is underway to develop a dashboard that strengthens our understanding of the risk of exploitation facing children and the effectiveness of the multi-agency response. Alongside this, there will be an increased focus on raising awareness and improving community understanding that safeguarding children from exploitation is everyone's responsibility, with continued emphasis on the importance of partners and communities submitting relevant intelligence.

Work is also ongoing with Humberside Police and the Youth Justice Service following a recent increase in children in our care being remanded. This reinforces the importance of building our shared understanding of exploitation and responding early and effectively.

## Health

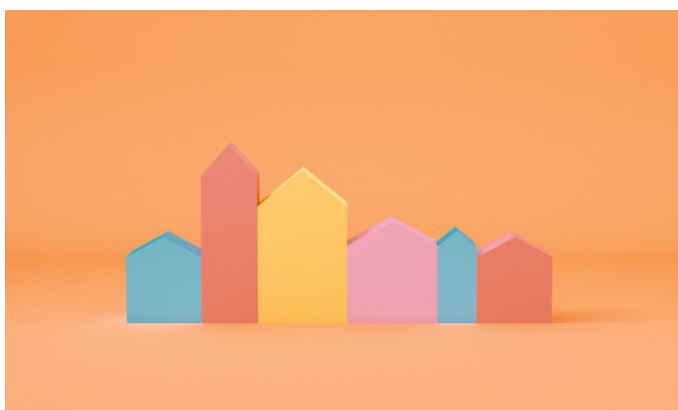


Progress has been evident since the last Board, and recommendations from the subgroup report - particularly those focused on strengthening young people's voice - will be taken forward to shape the next iteration of the Board delivery plan.

Good practice examples were shared, including health assessments now being completed at a location chosen by the young person.

Work is also progressing on a dedicated therapeutic mental health offer for care leavers through the ICB. This is moving closer to implementation, with delivery potentially possible within the next 3–6 months.

## Housing



An update was shared that a dedicated Care Leaver Housing Officer has been appointed, focusing on ensuring care leavers receive the best possible housing support.

Work is underway to improve how young people understand the local offer, and changes have been identified to make the information clearer and easier to navigate.

In parallel, new accommodation options are being developed. Additional one-bedroom properties and flats are being sourced, with ongoing liaison with local agencies to increase the amount and range of provision available.

There has also been positive progress on developing a housing-related support commissioning process. Initial market testing is taking place, with a tender expected to be issued later in the spring. Alongside this, the care leavers' accommodation data dashboard is being refreshed to better identify and respond to the different needs across the cohort, and joint training is planned to strengthen relationships between Children's Services and Housing staff.

It was acknowledged that accommodation continues to be a significant challenge, and thanks were extended to the Housing team for their ongoing support and the progress being made.

## Champions



The subgroup continues to be well attended and active. Members shared updates to strengthen awareness and take-up of the Corporate and Community Parenting offer among young people, celebrated progress on providing bicycles for care-experienced people and discussed opportunities to expand free travel schemes in line with neighbouring local authorities.

The Family Enterprise programme update noted that seven young people

remain actively engaged, with two securing employment and training opportunities following their involvement. Strengths and areas for development have been identified for the next cohort, due to start in May 2026.

If you would like to be part of this, and add your voice to the championing of Corporate and Community Parenting, then please contact: [corporateparenting@nelincs.gov.uk](mailto:corporateparenting@nelincs.gov.uk)

## **Celebrating the North East Lincolnshire Kinship Zone**

On 22nd April, we proudly launched the Kinship Zone in North East Lincolnshire, bringing partners together with colleagues from the Department for Education. Together, we set the national and local context and reinforced the Families First approach, putting prevention and early support at the heart of our work.

Local insight kept the day focused on what matters most: kinship care, strong relationships, and the commitment and love that hold families together. Our guest speaker, Lisa February, brought this to life through her lived experience of becoming a kinship carer, and her story highlighted the difference the Kinship Zone can make for families in our community.

Since the launch, we have moved quickly to shape a strong, locally led Kinship Zone offer and embed family network practice across Children's Services and with our partners. This will improve stability for children, strengthen support for kinship carers, and help prevent children from entering our care where it is safe to do so.

For children and young people in North East Lincolnshire, the Kinship Zone is about feeling safe, supported and connected. It means we will work harder to help them stay within the people and places they know, where that is safe to do so, and to make sure their voices and experiences shape the help they receive. It also means better stability, less disruption, and earlier support for families so that small problems do not become crises.

For our partner organisations, the Kinship Zone is a shared commitment to do things together - not in parallel. It means clearer pathways, stronger

information sharing, and a joined up approach to identifying and supporting kinship and wider family networks early, making it easier for families to get the right help at the right time.



## **Stronger Together: Regional Children in Care & Care Leavers Event**

Influencers hosted the Regional Children in Care and Care Leavers event in Grimsby on 19th February, bringing together almost 100 children in our care and care leavers from across Yorkshire and Humber.

The day opened with an uplifting performance of Bruno Mars' 'Count on Me' by NELC Children's Services Senior Leadership Team, before young people took part in creative and confidence-building activities such as 'Walk a Mile in My Shoes', celebrating why we love where we live, comparing local offers, and practising active listening.

The event ended on a real high with a time capsule of aspirations for the year ahead (to be opened next year) and a shared moment to mark World Care Day.

Feedback was fantastic: young people told us they "loved the day" and "definitely want more events like this", and we're excited to build on this success in the months ahead.



## **The Corporate and Community Parenting Promise**

Work is progressing on transforming the Corporate and Community Parenting Promise into a tangible and visible offer that clearly demonstrates what children and young people in our care can expect from us.

In North East Lincolnshire, our Corporate and Community Parenting Promise represents our collective commitment as a whole council and wider community to ensure children in our care and care-experienced young people feel safe, heard, supported, and hopeful about their future.

Our Promise emphasises that every child and young person in our care has the right to:

- Feel loved, valued, and be part of their community
- Access opportunities that help them thrive - from education and employment to hobbies, wellbeing support, and safe places to live
- Have their voice heard and acted upon
- Be supported by adults who champion them, challenge inequality, and remove barriers
- Experience stability, belonging, and positive relationships

To help turn this Promise into real, practical support, we've included a QR code that staff can scan to share offers of help, opportunities, or contributions that you or your service can make. Whether it's offering work experience, mentoring, access to resources, discounted or free activities, sharing skills, or simply wanting to get involved in a way that supports our children and young people - every offer makes a difference.

We strongly encourage all colleagues across North East Lincolnshire Council and partner organisations to make use of the QR code and reflect on how their service can play a part. Our children and young people deserve the very best from all of us, and together we can build an offer that reflects the ambition, compassion, and community spirit of our area.



**Could you Be a Buddy?**

**buddies**  
North East Lincolnshire

Buddies are volunteers who are independent of children's social care, can be a positive role model, and build a trusted relationship with a child in our care or care leaver.

**Interested?**  
Please email [cape@nelincs.gov.uk](mailto:cape@nelincs.gov.uk)

## Upcoming Events

Upcoming events and activities include:

- 1st June 2026 Creative Conversation - Things To Do, Place To Go, How Do I Know

**If you are working with any young people who you think would be interested in contributing to this discussion, please encourage them to attend at the Haven from 5-7pm**

- 15th June 2026 - Corporate and Community Parenting Board

If you would like to know more about Corporate and Community Parenting, please go to the website via: [Corporate and Community Parenting | NELC](#) or contact: **corporateparenting@nelincs.gov.uk**

If you would like to know more about Fostering, please go to the website via: [Fostering in North East Lincolnshire | NELC](#) or contact the Fostering team on: **fosteringandadoption@nelincs.gov.uk**