



North East Lincolnshire Children Young People and Families

'Growing Stronger Together'

Strategic Framework 2026/28



An intro to 'Growing Stronger Together' for our children, young people and families in NEL

- Welcome to 'Growing Stronger Together' which builds on what we already do, and makes it even clearer as to how we work together to help improve things for our children, young people and families in North East Lincolnshire
- We promise to work together to take shared responsibility to make life better for all children and young people, especially those who need the most help
- There are lots of things changing across the country, so we want to use these changes as opportunities, to get better, improve our services and challenge ourselves to grow
- Good relationships are really important. When we work together across schools, health, social care, police, charities, businesses and the community, we can better understand what needs to be done so we can make real, long-lasting change
- We know that prevention, getting it right the first time, and helping children and young people as early as we can, and the people who love and care for them, is the best way to grow into happy and healthy adults who can flourish and thrive. We will make sure everyone can get fair and easy access to info, help and support when they need it
- We have agreed on '6Ps' to explain what we promise to do, what we believe in, what our priorities are, who is involved, and how we will check that things are working so we can keep 'Growing Stronger Together'.



'Growing Stronger Together'

6P's Strategic Framework



Promise: We want our children and young people, and their families, to flourish and thrive and that our values help us make good choices and do the right things



Principles: We work via a 'unified approach' across the borough, in a way that puts the child first, where we are relational, strengths based and solution focused, and where we are trauma aware



Priorities: We want children to start well; grow up well; feel safe / be safe; have fair chances for all; have their voice heard; and where we build strong foundations together



People: Where everyone works together including children, young people, families, communities and across the partnership and workforce



Place: Where the things we do meet the needs of our neighbourhoods / localities / communities across the borough



Prove: We listen, learn, review and adapt, we measure what we treasure and we listen to real voices so we know what is working

“
Don't just promise.
Prove.”

Promise: Vision and Values

We want '**Our Children, Our Future**' to grow up feeling safe, loved and cared for. We want them to belong, and to get support from their family networks, schools and communities, so they can flourish and thrive.

We will:

- Make sure children and young people come first all we do. We will seek out, listen to, and learn from their different views and experiences, and work with them to make things better
- Help, support and protect as early as possible, build trust and make sure everyone has a fair chance
- Encourage children, young people and families to believe in themselves so they can reach their goals
- Remove barriers so every child and young person feels they belong, are valued, and can feel confident about their future
- Be curious, ask questions and make the most of every chance to help make a difference
- Be brave and do what is right, even when it is hard
- Be honest with each other and work together towards the same vision
- Work together as 'one team' to do what is best for children, young people and families, not for our own organisation



Principles: Our 'Unified Approach'

Our '**Unified Approach**' explains how we work together, with each other, and our children, young people, families and communities, to help everyone '**grow stronger together**' across North East Lincolnshire

- **Relational:** We want to have strong, trusting relationships, where we are '**human first**' and where we all support and challenge to do the right thing
- **Strengths based:** We look for the strengths in people so they can grow in confidence and make positive changes
- **Solution focussed:** We help and support people to think of their own ideas to solve problems, which helps them to become stronger and more able to cope in the future
- **Child First:** We see children as children, not just their behaviour, and we work with them in a positive way to help them feel included and not judged
- **Trauma aware:** We seek to be more aware and understand past trauma and how it affects people. We support them to overcome challenges, feel safe and be ready to thrive, and we are working toward everyone becoming more trauma informed.
- The '**green leaves**' refer to some of the important ways we work together across the borough to support our children, young people, families and communities



Priorities: Priority areas of focus

There are lots of different groups and teams across North East Lincolnshire who work together for '**Our Children Our Future**'. There are different plans, strategies and charters which help to make things better for all our children, young people and families, including those who need the most help.

Across the whole area, we want everyone to understand our shared priorities. These help us to focus on what we need to do together to make the biggest difference to our children, young people and families.

The things we do fit under the following priorities:

- 

Start Well: ensure children have the best start in life
- 

Grow Up Well: ensure support to children and young people to be healthy in their body and mind, stop things from getting any worse, have healthy relationships, make sure they can play and feel joy, and be the best they can be
- 

Be Safe / Feel Safe: enable children to get the help, support and protection they need to be safe and feel safe
- 

Fair Chances for All: to make sure all children and young people have the same chances, that things are fair, welcoming and easy to access, especially for those who need more help
- 

Amplify Voice: to empower children, young people and families so they can share their ideas, make decisions with us and shape what we do
- 

Strong Foundations Together: to work together, as '**one team**', where we share information, and good ways of working, so we can better support children, young people and families



People: Working together with / for the people we serve

The people who work across our services are really important. They help children, young people and families, and they help make good changes happen.

We want the best for ourselves, and for all our children and young people. Through 'Growing Stronger Together', we want to find new ways of working as 'one team', so we can be the best we can be.

We want everyone who works across the borough to:

- Work together in a **'Unified Approach'**
- Understand what our children, young people, families and communities need
- Do the right thing at the right time, even if it's not usually part of their job
- Be motivated, skilled and competent and keep going even when things are tough
- To welcome diversity, treat everyone fairly and challenge people when they don't
- Be and feel supported so they can do their best, be the best they can be and **'grow stronger together'** for our children, young people and families

We will do this by:

- Learning about how services for children, young people and families work across the borough, and how everyone can help
- Speaking up for what children and young people need
- Listening, learning, reviewing and adapting when we need to
- Being flexible, creative and open to new ideas
- Noticing and celebrating when people do well
- Sharing information and good ways of working
- Supporting leaders and workers at every level to work well together

Place: Understanding our 'place'

Across North East Lincolnshire, we care a lot about the local area - its history, heritage, evolving culture, and the people who live here. We want to understand what different neighbourhoods, localities and communities need so we can make good plans that really help children, young people and families, and make a positive difference to their lives.

We listen to what people tell us, and we use what we learn about their strengths and challenges to make changes that fit the best. We work together with children, young people and families because they are the experts in their own lives.

Some of the important ways we work together across the borough include:

- **Growing Up Well in NEL:** where we focus on helping as early as we can, where there is a focus on play and joy, not only treatment, so children and young people enjoy positive wellbeing and where they learn to cope throughout their lives
- **Building a Borough of Belonging:** where children and young people, whatever their identity, race and culture, feel included, have a sense of belonging in their homes, schools and communities and where they feel love and care
- **NEL as Playful Place:** where people of all ages can be playful and play, and where they can enjoy their local spaces and places to have fun
- **NEL as Marmot Place:** where we are working together so that everyone has fair health and wellbeing outcomes, particularly those who may need the most help to achieve positive health and that there is a focus on wider issues like housing, poverty, skills and income to help contribute to better outcomes.

There are lots of national changes for example, the children's reforms, neighbourhood health, the National Youth Strategy and the National Child Poverty Strategy, which give us a good opportunity to think about how we work together across the borough to make the biggest difference for all, particularly those who need help the most.

We are committed to working in a more joined up way across the whole areas for children, young people and families can flourish and thrive.

These place-based workstreams align with, and contribute to, the delivery of the North East Lincolnshire Joint Health and Wellbeing Strategy, through the Health and Wellbeing Board, which supports improved outcomes for children, young people and families through their lives.

Prove: How do we know what is working

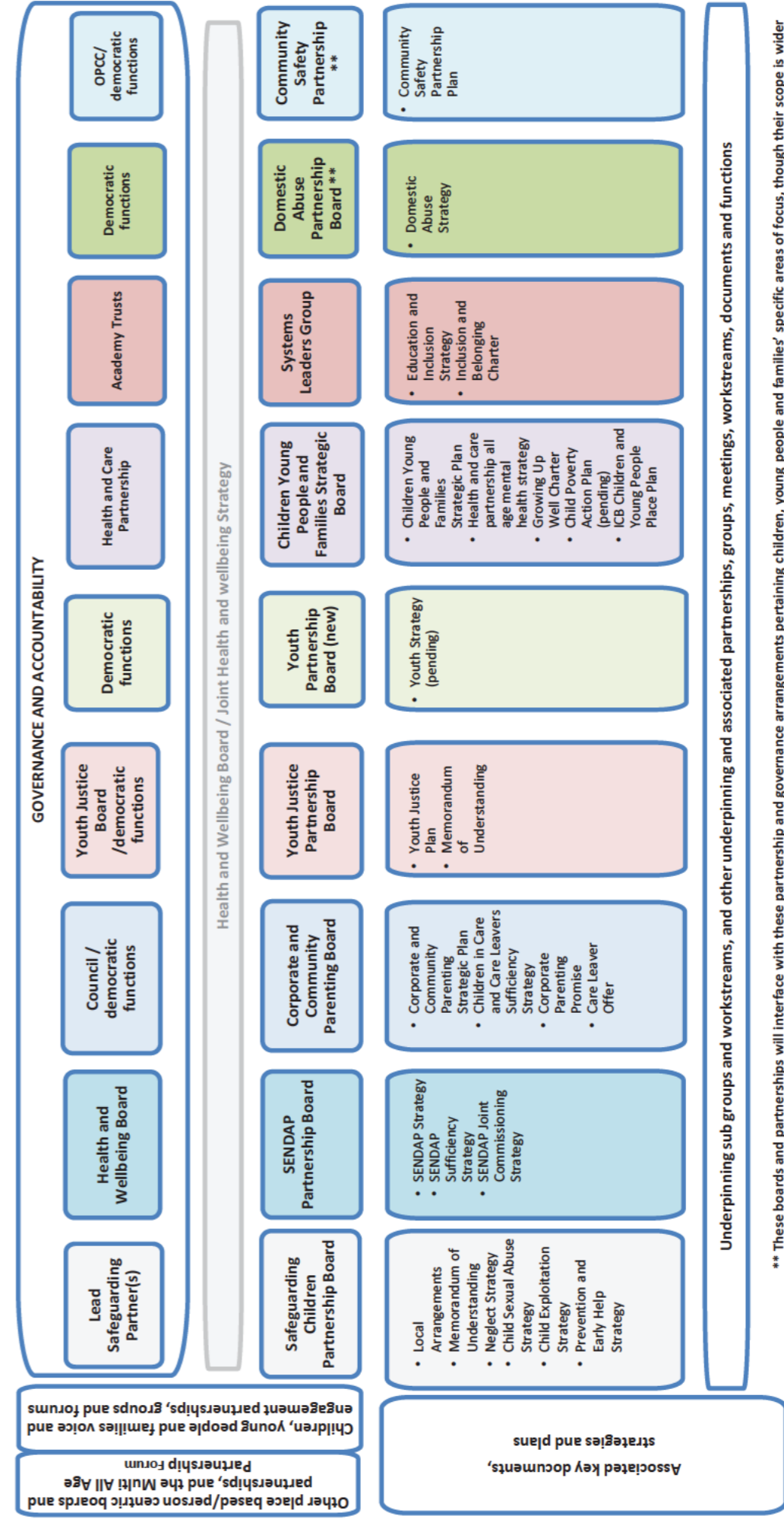
We need more than just numbers....

We are committed to listening, learning, reviewing and adapting, so we know what works, what difference it is making and what we can do differently together. To make sure we do the things that work the best, we'll talk at the different groups and meetings, and we will help and support each other to do the right thing. We'll try to make sure we 'measure what we treasure', and we'll use different ways of checking the progress we are making.

We will do this by:

- **Shared Outcome Dashboard:** We will use this to help us to keep an eye on key data about the things we are involved in so we know what difference we are making
- **Family and Youth Voice:** We will actively seek and listen to the feedback we receive from our children, young people and families through surveys, groups and activities. We will act on what we know to help change things for the better and we will share what we've done through "You Said, We Did" updates
- **Annual Public Report(s):** There are lots of reports that explain what has been done well, and what still needs to be improved. We will make sure we review these and we will ensure that they are used to keep the community informed about our achievements, the impact on outcomes and areas for improvement
- **Celebrating Success:** We'll share stories of impact alongside data to highlight the positive changes we're making, for examples through conference(s), event(s) and communications
- **Continuous Learning:** We will keep learning and improving, and we'll use real evidence and people's experiences to make our work better over time, so they can enjoy improved outcomes

Place based children, young people and families partnership governance and bookcase of key documents



** These boards and partnerships will interface with these partnership and governance arrangements pertaining children, young people and families' specific areas of focus, though their scope is wider





North East Lincolnshire Children Young People and Families

'Growing Stronger Together'

Strategic Framework 2026/28

