

NOTE
A 3.25m running lane to be maintained, on Short Street.

NOTE
Parking bays to be suspended.

NOTE
Parking to be suspended to allow vehicles to turn safely.

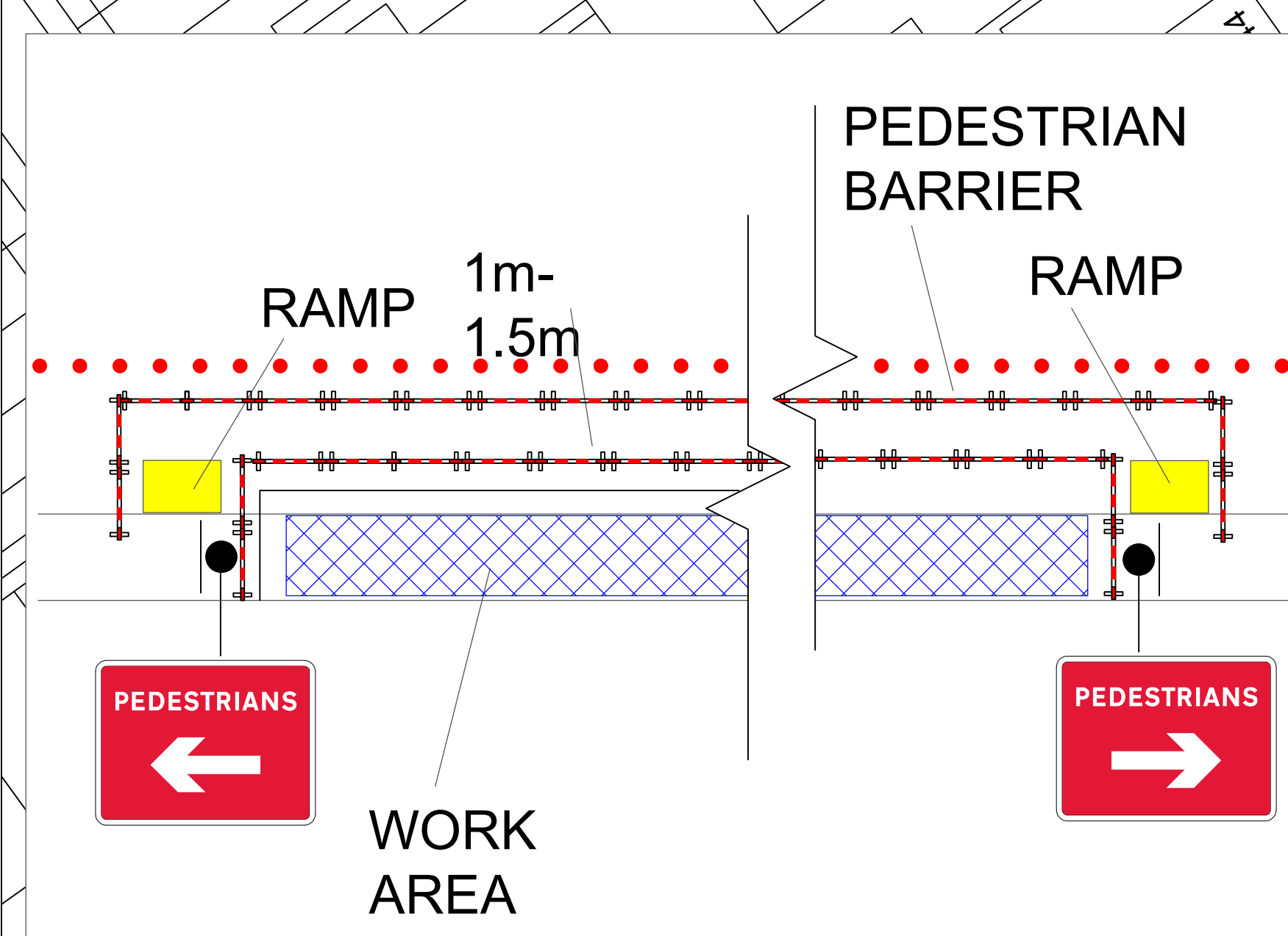
NOTE
Cosgrove Street to be re-scinded to allow safe access and egress. All conflicting signs to be masked out / covered.

NOTE
Parking to be suspended to allow larger vehicles to manoeuvre.

NOTE
Signage on Mill Place to be moved back, to ensure an absolute minimum of 1.2m is remaining on the footway.

NOTE
A pedestrian walkway will be installed, to assist 24/7 access to businesses & properties.

PEDESTRIAN WALKWAY DETAIL



- Key**
- Traffic Cones
 - ▬▬▬▬ Pedestrian Barrier
 - ▨ Work Area
 - No Parking Cones
 - ▬▬▬▬ Pedestrian Diversion Route
 - ▬▬▬▬ RAMP
 - ▬▬▬▬ Kerb Ramp

Drawing No:
RW-CLEETHORPES-001

PHASE ONE

Scale:NTS Drawn by: SBTM/Approved by: MB

Crown Copyright. All rights reserved. Unauthorised reproduction infringes Crown Copyright and may lead to prosecution or civil proceedings.