



North East Lincolnshire Council

Childcare Sufficiency Assessment

2012/13 refresh

Table of contents

Introduction	3
Key findings	6
Choice and flexibility.....	6
Availability	6
Quality	7
Affordability.....	7
1. Supply of childcare	8
1.1 Flexible free entitlement for three and four year olds (Early education).....	8
1.2 Flexible funding entitlement for two year olds.....	13
1.3 Stocks of registered childcare.....	15
1.4 Special educational needs (SEN)	17
1.5 Cost of childcare.....	19
1.6 Ethnicity.....	23
2. Demand for childcare	25
2.1 Occupancy.....	25
2.2 Vacant places	27
2.3 Waiting lists	27
3. Appendices	29
3.1 Sources of information.....	29

Introduction

The Childcare Act (2006) requires North East Lincolnshire (NEL) Council, like all other local authorities in England, to ensure there is sufficient childcare for parents and carers who are working, studying or training. It also highlights the need for local authorities to pay particular attention to the childcare needs of specific target groups, for instance:

- *Low-income families;*
- *Black and minority ethnic families;*
- *Gypsy, Roma and traveller communities;*
- *Families with disabled children or disabled parents;*
- *Families living in rural or inaccessible areas;*
- *Armed Forces families.*

The duties in the act (section 6) require the council to shape and support the development of childcare provision in NEL in order to make it flexible, sustainable and responsive to the needs of the community. This role is described as a 'market management' function, whereby the local authority supports the sector to meet the needs of parents, children and young people, along with other stakeholders.

The council also has a duty to undertake a refresh of the full detailed Childcare Sufficiency Assessment (CSA) on an annual basis; however Section 75 of the Childcare and Families Bill 2012-13 recommends that Section 11 of the Childcare Act 2006 (duty of local authority in England to assess sufficiency of childcare provision) is repealed. This Bill is currently awaiting Royal Assent, on approval from the House of Commons and House of Lords¹.

¹ Source: Childcare and Families Bill 2012/13, Parliament, <http://services.parliament.uk/bills/2012-13/childrenandfamilies.html>

In 2004, the Government published a ‘10-year Strategy for Childcare’², to ensure that every child has the best possible start in life; whilst also providing the option for parents, particularly mothers, to work and progress their careers. The strategy covers four primary categories, which will be referred to within this CSA:

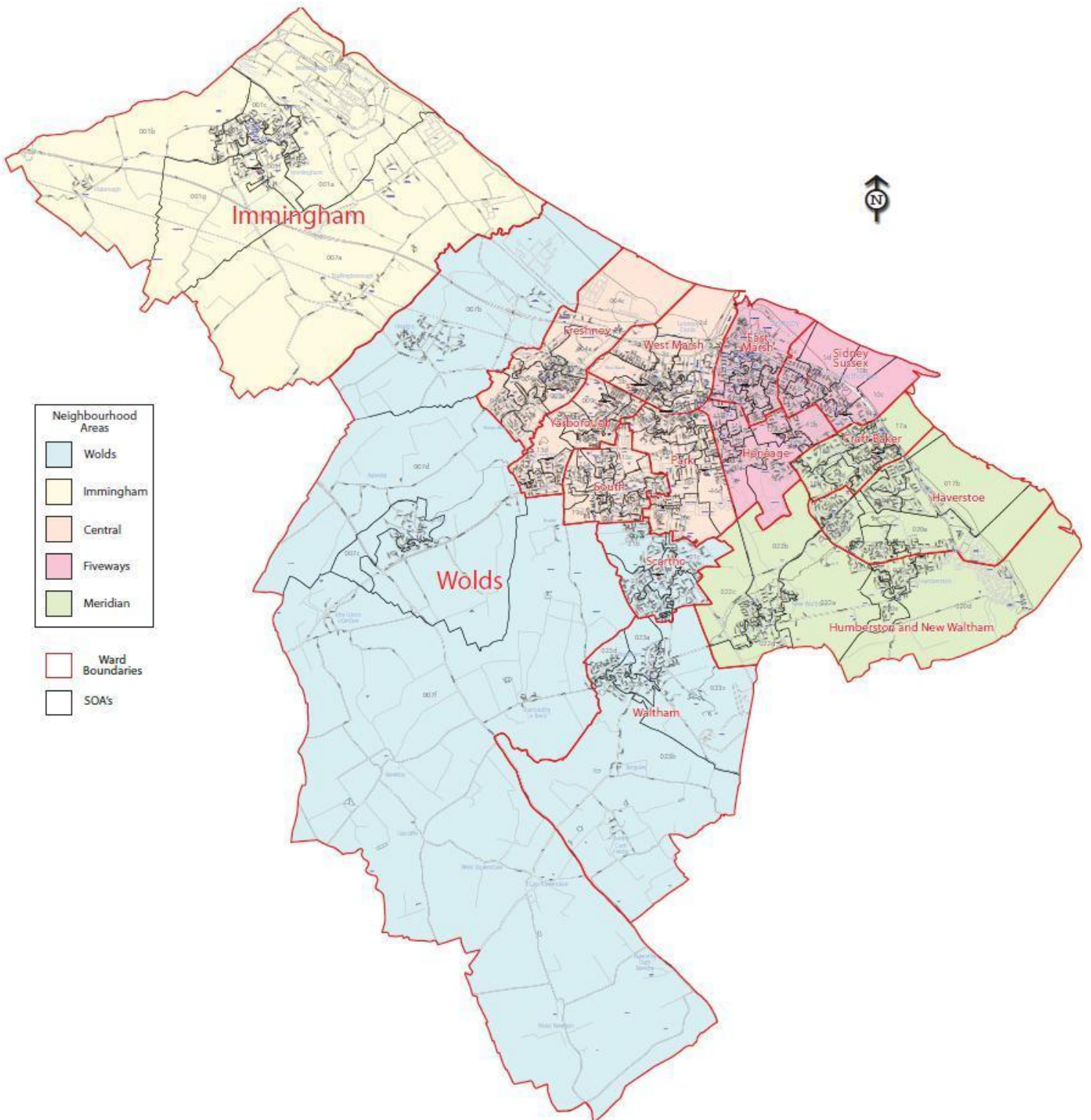
- **Choice and flexibility:** *parents to have greater choice about balancing work and family life;*
- **Availability:** *for all families with children aged up to 14 (17 for disabled children) who need an affordable, flexible, high quality childcare place that meets their circumstances;*
- **Quality:** *high quality provision with a highly skilled childcare and Early Years workforce, among the best in the world;*
- **Affordability:** *families to be able to afford flexible, high quality childcare that is appropriate for their needs.*

For the 2012/13 CSA refresh, analysis has been broken down to a sub-authority level and represented at both electoral ward and neighbourhood level. Details of which neighbourhood each ward sits in is shown below:

Neighbourhood	Electoral ward
Central	Freshney
	Park
	South
	West Marsh
	Yarborough
Fiveways	East Marsh
	Heneage
	Sidney Sussex
Immingham	Immingham
Meridian	Croft Baker
	Haverstoe
	Humberston and New Waltham
Wolds	Scarho
	Waltham
	Wolds

² Source: DfE, *Choice for parents, the best start for children: A ten-year strategy for childcare*, December 2004

A map of NEL³, by its neighbourhood areas and ward boundaries, is represented below:



³ Source: North East Lincolnshire Council ICT department – MapInfo excerpt. This product includes mapping data licensed from Ordnance Survey © Crown Copyright 2007 Licence number 100020759

Key findings

Choice and flexibility

- NEL has 159 registered childcare settings offering 2,877 places.
- Central neighbourhood has the highest proportion of available childcare places, whilst Immingham has the least.
- By carescheme type, day nurseries offer the highest number of available places covering childcare for babies and children up to the age of five years. Provision is also high for out of school clubs, pre-schools and childminding settings.
- Availability of early education for three and four year olds is highest within Central and Fiveways neighbourhoods, both of which are areas with significant levels of socio-economic deprivation.
- Take up of early education places is highest in Central and Fiveways, which directly correlates with availability.
- The number of available places has fallen by 6.5%, while take up has risen by 4.6% since the Spring 2012 Headcount.
- The number of available places per three and four year old (*penetration rate*) is high with an average of 1.63 places per child across NEL, however this has decreased from the 1.75 places per child highlighted in the 2011/12 refresh.
- In NEL, 96.5% of potential⁴ three and four year olds have taken up an early education place.
- Of those three and four year olds taking up a place, 95.3% are taking up their full 15 hour Flexible Free Entitlement (FFE).
- Take up of FFE for the most disadvantaged two year olds in NEL stands at 98.5% this year, up from the 96.1% reported in 2011.

Availability

- Overall occupancy of registered childcare stands at 71.2%, based on findings from the 2012 Family Information Service (FIS) annual update.
- Calculated occupancy rates are highest in Fiveways (80.6%) and Wolds (76.3%) neighbourhoods.
- At ward level, occupancy varies radically from 88.7% in Scartho to 26.8% in West Marsh.
- 62.2% of providers estimate their occupancy as between 51% and 90% over the past 12 months.
- 10.3% of all childcare settings have chosen not to fill any of their vacancies, the majority of which were childminders.
- The economic climate/recession, loss of employment and a lack of childcare enquiries continue to dominate concerns of childcare providers, prompting their decision to not fill vacant places.

⁴ Source: 3 and 4 year olds as depicted by GP registrations: Hull and East Riding Health Informatics Service - Exeter system

- The number of children on waiting lists is significantly high in Meridian, when compared to other neighbourhood areas. Humberston and New Waltham ward has the highest proportion of children on waiting lists, at 16.4%, indicating a high demand for childcare in this area.
- 36.1% of all children on waiting lists were aged two years or under.

Quality

- There are currently no settings rated as '*inadequate*' in NEL.
- Findings from 2011/12 end of year reports⁵ indicate that 9.3% of all childcare settings were rated as '*outstanding*' by Ofsted for overall effectiveness in their inspections. 62.8% received a '*good*' rating while 27.9% gained '*satisfactory*'.
- 20.8% of group based settings achieved '*outstanding*' ratings for overall effectiveness, while 58.3% were '*good*' and 20.8% were '*satisfactory*'.
- 9.3% of childminders achieved '*outstanding*' ratings for overall effectiveness, while 62.8% were '*good*' and 27.9% were '*satisfactory*'.
- Overall outcome results have seen a significant improvement within early years settings over the past year, most notably in the proportion of '*outstanding*' settings, which have increased from 5.5% to 9.3%. This is mostly due to the improvement within group based settings, which incorporates day nurseries, pre-school playgroups and out of school clubs.

Affordability

- Latest average childcare costs highlight that hourly costs within day nurseries range from an average of £4.56 for under two year olds to £4.13 for three years and above.
- Immingham, Scartho and South wards have the more expensive day nursery childcare, based on average hourly costs.
- Average pre-school costs range from £7.97 per session for two to three year olds to £7.92 for children aged three years and above.
- There are four pre-schools whose cost per session exceeds £10.00, located in Haverstoe, Park and Croft Baker wards, while the least expensive sessional group is located in Yarborough ward, costing £6.50 per session.
- There remains to be no out of school provision in Immingham.
- The lowest average out of school cost per session is £6.50 (Freshney and Yarborough wards) and the highest average cost is £10.00 per session (East Marsh and Haverstoe wards).
- Average childminder costs range from an average of £3.75 per hour in Immingham, to £3.99 per hour in Wolds.
- West Marsh and East Marsh wards have the least expensive childminders, costing on average £3.40 and £3.50 per hour respectively.

⁵ Source: North East Lincolnshire Council, Ofsted Inspection outcomes – End of Year report, 2011/12

1. **Supply of childcare**

1.1 **Flexible free entitlement for three and four year olds (early education)**

Every eligible three and four year old is entitled to 15 hours of Flexible Free Entitlement (FFE) for 38 weeks of the year. In order to provide this entitlement, providers must be able to deliver the 'local core offer', as stated below:

As a **minimum**, ensure parents can access their child's free entitlement in the following pattern:

- Three hours a day over five days of the week *or*
- Five hours a day over three days of the week.

Where possible, providers will strive to offer the entitlement flexibly to meet parental demand ensuring the DfE definition is followed, as outlined below:

- Can be taken over a minimum of two days.
- Must be no more than ten hours in one day.
- Must be a minimum of two and a half hours a day.
- Can be taken with no more than two providers.

Entitlement commences from the start of the term immediately following a child's third birthday. Shown in the table below:

Child born on or between	Will become eligible for a free place from
1st April and 31st August	Autumn term (from 1st September)
1st September and 31st December	Spring term (from 1st January)
1st January and 31st March	Summer term (from 1st April)

From 2012 a stretched availability will come into place, whereby parents, if they wish to, should be able to access FFE for 12 hours a week over 47 weeks. 63% of providers within NEL indicated in the full CSA⁶ that they will be able to provide this. Those that indicated that they could not provide a stretched availability were mainly those settings that opened during term time only.

⁶ Source: North East Lincolnshire Council, <http://www.nelincs.gov.uk/resident/family-information-and-children-s-centres/looking-for-childcare-/childcare-sufficiency-assessment/,2011>

Table 1.1a: Availability and take up of three and four year old early education places: Spring term 2013

Locality	Total FFE places	Total takeup
Freshney	400	226
Park	692	349
South	641	292
West Marsh	482	320
Yarborough	599	237
Central total	2,814	1,424
East Marsh	333	234
Heneage	481	423
Sidney Sussex	511	364
Fiveways total	1,325	1,020
Immingham	505	292
Immingham total	505	292
Croft Baker	271	262
Haverstoe	268	169
Humberston and New Waltham	454	222
Meridian total	993	653
Scartho	415	241
Waltham	214	157
Wolds	176	112
Wolds total	805	510
North East Lincolnshire total	6,442	3,900

- In spring 2013, there were 6,442 early education places available to three and four year olds, which marks a 6.5% decrease on the 6,888 available in spring 2012.
- At a neighbourhood level, 43.7% of all early education places were available in Central, 20.6% in Fiveways, 15.4% in Meridian, 12.5% in Wolds and 7.8% in Immingham.
- At ward level, Park, South and Yarborough wards have the largest number of places available, with 692, 641 and 599 respectively.
- Of the 6,442 available places, 3,900 places were taken up throughout NEL. Take up has increased by 4.6% on the 3,727 reported in spring 2012.
- 1,424 early education places were taken up in Central (36.5%), 1,020 in Fiveways (26.2%), 653 in Meridian (16.7%), 510 in Wolds (13.1%) and 292 in Immingham (7.5%).
- Further analysis highlights that 43.9% of available places were provided by PVI (Private, voluntary and independent) settings; while the remainder were offered within LEA (Local Education Authority) settings.

Table 1.1b: Penetration rate of three and four year old early education places: Spring term 2013

Locality	Total three and four year olds	Total FFE places	Penetration rate
Freshney	199	400	2.01
Park	285	692	2.43
South	442	641	1.45
West Marsh	264	482	1.83
Yarborough	312	599	1.92
Central total	1,502	2,814	1.87
East Marsh	357	333	0.93
Heneage	351	481	1.37
Sidney Sussex	373	511	1.37
Fiveways total	1,081	1,325	1.23
Immingham	313	505	1.61
Immingham total	313	505	1.61
Croft Baker	240	271	1.13
Haverstoe	142	268	1.89
Humberston and New Waltham	169	454	2.69
Meridian total	551	993	1.80
Scartho	228	415	1.82
Waltham	131	214	1.63
Wolds	138	176	1.28
Wolds total	497	805	1.62
North East Lincolnshire total	3,944	6,442	1.63

Table 1.1b gives the population of three and four year olds, taken from the September 2012 GP registration dataset⁷ and the number of available places. The penetration rate is defined as the number of available early education places per child (aged three and four years).

- There is an average of 1.63 early education places available for every three and four year old in NEL. This is a decrease on the 1.75 places available in spring 2012.
- Penetration rates at neighbourhood level range between 1.87 in Central and 1.23 in Immingham.
- At ward level, there is significant disparity in the rates, which range from 0.93 in East Marsh to 2.69 in Humberston and New Waltham.
- The penetration rate of 0.93 in East Marsh highlights under provision of FFE for three and four year olds in this heavily deprived ward.
- Croft Baker has the second lowest penetration rate in NEL at 1.13 places per child aged 3 and 4 years.

In spring each year the Local Authority undertakes an Early Years Census whereby all children taking up an early education place are counted, this is called the headcount. The following tables

⁷ Source: Hull and East Riding Health Informatics Service - Exeter system, GP registrations: September 2012

use this data to estimate take up of places against population and also looks at the percentage of children on the headcount that are taking up their full 15 hours.

Please note that the ward and neighbourhood level analysis of child headcount data is taken from the child's home postcode, not the postcode of the provision where they are attending childcare.

Table 1.1c: Estimated take up of three and four year old early education places: Spring term 2013

Locality	Total three and four year olds	Total children on headcount	Estimated take up
Freshney	199	205	103.0%
Park	285	292	102.3%
South	442	370	83.6%
West Marsh	264	246	93.2%
Yarborough	312	287	92.0%
Central total	1,502	1,399	93.1%
East Marsh	357	333	93.3%
Heneage	351	366	104.3%
Sidney Sussex	373	364	97.6%
Fiveways total	1,081	1,063	98.3%
Immingham	313	291	93.0%
Immingham total	313	291	93.0%
Croft Baker	240	271	112.9%
Haverstoe	142	149	104.9%
Humberston and New Waltham	169	149	88.2%
Meridian total	551	569	103.3%
Scartho	228	228	100.0%
Waltham	131	141	107.3%
Wolds	138	116	84.1%
Wolds total	497	485	97.5%
North East Lincolnshire total	3,944	3,807	96.5%

This dataset looks at the potential population of three and four year olds taken from GP registration data at September 2012 against the number of three and four year olds taking up an early education place.

Table 1.1c depicts the percentage of the three and four year old population taking up an early education placement in NEL. Please note that take up is estimated due to the limitations of the datasets. In this case, a number of postcodes could not be validated and children were omitted. In addition, there may also be some variance due to the difference in the child population (September 2012) and headcount (Spring 2013) dates.

Where a child appears on the headcount dataset as attending two or more settings, duplicate entries have been removed to provide a more accurate picture of take up for those children accessing their entitlement to FFE.

- In total, 96.5% of three and four year olds in NEL have taken up an early education place as of spring term 2013. This marks a 1.2% increase on the 95.3% reported last year.
- At neighbourhood level, Meridian has the greatest estimated take up, at 103.3%, while Immingham has the lowest, at 93%.
- At ward level, seven wards have a take up rate over 100% (Croft Baker, Freshney, Haverstoe, Heneage, Park, Scartho and Waltham), while South has a much lower take up at 83.6%. However, no judgement can be made with this regard as parents often choose childcare close to where they work and this may not be in the area they are living.

Table 1.1d: Summary of three and four year olds taking up their full FFE entitlement: Spring term 2013

Locality	Total children on headcount	Total taking up full FFE entitlement	Estimated take up
Freshney	205	199	97.1%
Park	292	275	94.3%
South	370	327	88.5%
West Marsh	246	246	100.0%
Yarborough	287	279	97.2%
Central total	1,399	1,326	94.8%
East Marsh	333	333	100.0%
Heneage	366	354	96.7%
Sidney Sussex	364	357	98.1%
Fiveways total	1,063	1,044	98.2%
Immingham	291	283	97.3%
Immingham total	291	283	97.3%
Croft Baker	271	257	94.8%
Haverstoe	149	129	86.6%
Humberston and New Waltham	149	138	92.6%
Meridian total	569	524	92.1%
Scartho	228	224	98.2%
Waltham	141	131	93.2%
Wolds	116	94	81.0%
Wolds total	485	449	92.7%
North East Lincolnshire total	3,807	3,626	95.3%

Table 1.1d depicts the proportion of all children from the Spring 2013 Headcount that are taking up their full 15 hour entitlement to FFE.

- In total, 95.3% of all three and four year olds from the Spring 2013 Headcount are taking up the full 15 hour entitlement to FFE. This shows a drop from the 96.8% take up rate seen in the spring 2012 headcount.
- The highest take up at neighbourhood level is within Fiveways (98.2%), while it is lowest in Meridian (92.1%).
- Both East Marsh and West Marsh wards have full take up of FFE from all children on the headcount residing in these areas.

- Wolds has the lowest take up, with 81% of children taking up their full FFE entitlement of 15 hours.

1.2 Flexible funding entitlement for two year olds

Poverty has a real impact upon a child's chances of progressing well in the early years and beyond. Only one in five young people from the poorest families achieve five good GCSEs, including English and Maths, compared with three quarters of those from the richest families⁸. Good quality early education, especially from age two upwards, has positive benefits on children's all-round development; however, fewer children from more deprived backgrounds have the opportunity to experience early education at age two⁹.

From January 2013, North East Lincolnshire will be offering 270 free nursery places to the most disadvantaged two year olds in North East Lincolnshire. This will extend again in September 2014 and be offered to 40% of all 2 year olds in the borough. The nursery place is funded for ten hours per week for 38 weeks of the year, during term time.

From September 2013, the Government have announced that all two year olds who are eligible for free school meals will be entitled to receive the two year old funding. Based on current figures taken from the Department for Education (DfE) website, NEL are expected to be able to offer 450¹⁰.

⁸ Source: *Gregg P and Goodman A, Poorer Children's educational attainment: how important are attitudes and behaviours?*, Joseph Rowntree Foundation (2010).

⁹ Source: *Smith, R., Purdon, S., Schneider, V., La Valle, I., Wollny, I., Owen, R. and Bryson, C. (2009) 'Early Education Pilot for Two Year Old Children Evaluation'*

¹⁰ Source: DfE,

<http://media.education.gov.uk/assets/files/pdf/l/2yo%20capital%20and%20revenue%20funding%20allocations%20spreadsheet.pdf>

Figure 1.2a: Proportion of two year olds taking up their full FFE entitlement: Spring term 2013

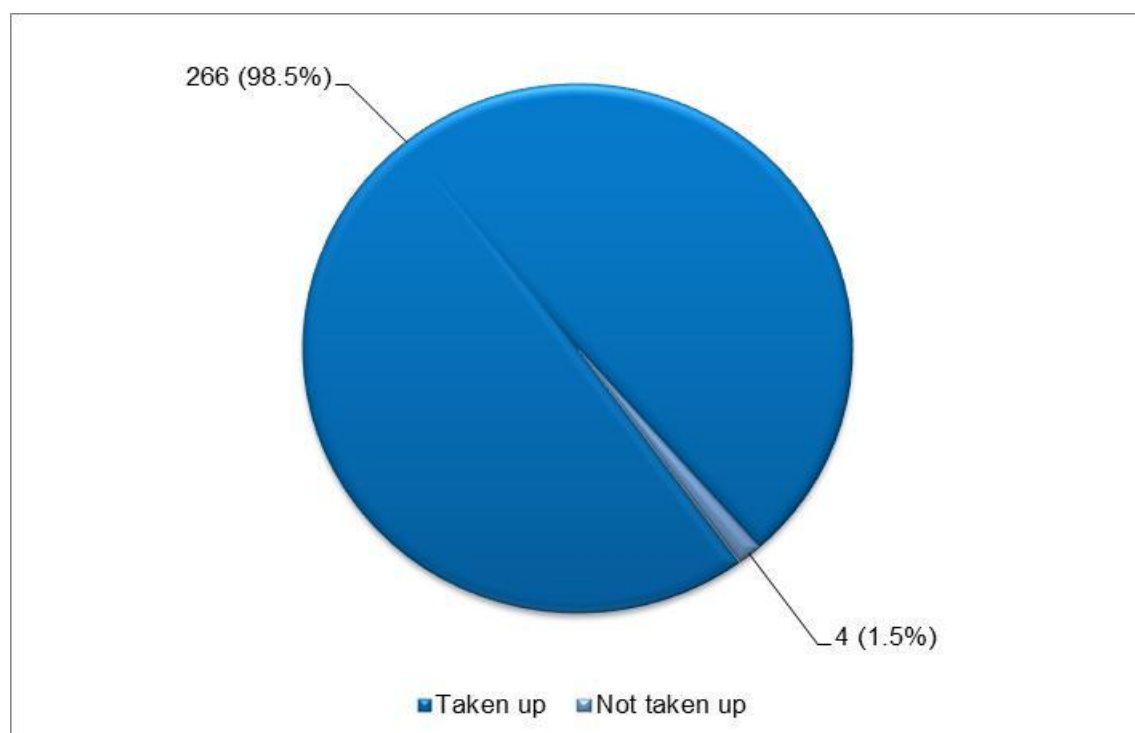


Table 1.2a: Summary of two year olds taking up their full FFE entitlement, by deprivation: Spring term 2013

Neighbourhood	Within top 20%	Outside top 20%	Not known	Grand total
Central	77.1%	22.9%	0.0%	131
Fiveways	97.0%	3.0%	0.0%	100
Immingham	92.9%	7.1%	0.0%	14
Meridian	61.5%	38.5%	0.0%	13
Wolds	0.0%	100.0%	0.0%	6
Postcode not known	0.0%	0.0%	100.0%	2
North East Lincolnshire total	81.2%	16.9%	0.8%	266

- Figure 1.2a highlights that FFE take up for two year olds is at 98.5% this year, up from the 96.1% reported in 2011.
- Table 1.2a summarises the take up of FFE by two year olds across NEL.
- We can see that of the 266 two year olds taking up a place, 131 (49.2%) live in Central, 100 (37.6%) in Fiveways, 14 (5.3%) in Immingham, 13 (4.9%) in Meridian and six (2.3%) in Wolds.
- There were two children whose postcode was not known.
- Further interrogation of the data indicates that 95.9% of the 266 two year olds are using up their full ten hour entitlement.

1.3 Stocks of registered childcare

The maximum number of childcare places that can be made available in all childcare settings across NEL provides additional insight into provision that will enable parents to work, study or take up training. All figures within this section have been taken from the latest childcare stock figures, and are accurate as of 1st March 2013. The stock of childcare is taken directly from the figures determined by Ofsted inspections (www.ofsted.gov.uk). Please note that where a childcare setting is exempt from registration, figures have been collated through direct contact.

Table 1.3a: Numbers of childcare settings, by carescheme type: March 2013

Locality	Childminder	Day nursery	Pre-school playgroup	Out of school club	Creche	Total
Freshney	10	1	0	1	0	12
Park	8	5	2	3	0	18
South	5	3	0	0	0	8
West Marsh	2	1	2	2	0	7
Yarborough	4	2	1	1	0	8
Central total	29	12	5	7	0	53
East Marsh	1	2	1	0	3	7
Heneage	11	1	2	0	0	14
Sidney Sussex	9	1	0	2	0	12
Fiveways total	21	4	3	2	3	33
Immingham	6	2	0	1	0	9
Immingham total	6	2	0	1		9
Croft Baker	10	1	3	1	1	16
Haverstoe	7	1	2	1	0	11
Humberston and New Waltham	5	2	4	2	0	13
Meridian total	22	4	9	4	1	40
Scarho	4	1	0	2	0	7
Waltham	3	0	1	2	0	6
Wolds	7	1	1	2	0	11
Wolds total	14	2	2	6	0	24
North East Lincolnshire total	92	24	19	20	4	159

Table 1.3b: Numbers of registered childcare places, by carescheme type: March 2013

Locality	Childminder	Day nursery	Pre-school playgroup	Out of school club	Creche	Total
Freshney	53	42	0	24	0	119
Park	42	232	58	108	0	440
South	26	145	0	0	0	171
West Marsh	10	50	48	48	0	156
Yarborough	29	131	24	24	0	208
Central total	160	600	130	204	0	1,094
East Marsh	6	47	35	0	57	145
Heneage	61	44	48	0	0	153
Sidney Sussex	47	70	0	81	0	198
Fiveways total	114	161	83	81	57	496
Immingham	24	128	0	32	0	184
Immingham total	24	128	0	32		184
Croft Baker	56	39	64	38	12	209
Haverstoe	39	41	48	26	0	154
Humberston and New Waltham	28	44	118	48	0	238
Meridian total	123	124	230	112	12	601
Scarho	20	77	0	50	0	147
Waltham	16	0	82	106	0	204
Wolds	39	30	26	56	0	151
Wolds total	75	107	108	212	0	502
North East Lincolnshire total	496	1,120	551	641	69	2,877

- NEL currently has 159 operating childcare settings, offering 2,877 registered childcare places across five different sectors of care.
- Day nurseries offer the largest number of places and the highest place to setting ratio with an average of 46.7 places per setting across NEL.
- The childminding sector has the largest number of settings in NEL at 92 with 496 registered childcare places on offer. There is a declining trend for childminders within NEL which follows the national trend where the numbers of childminders have fallen by 13% between 2006 and 2011, as reported in the *2011 Childcare and Early Years Providers Survey*¹¹.
- Central and Meridian neighbourhoods have the largest numbers of childcare settings and registered places, while Immingham has the least available places.
- At ward level, provision in Waltham is limited with no full day care group provision. There are a large number of places on offer, however the majority of these are sessional within out of school clubs (breakfast club/after school club/holiday scheme).
- By comparison, Immingham has a small number of providers, however the majority of its available places are within day nurseries.

¹¹ Source: Department for Education, Richard Brind et al. *Childcare and Early Years Providers Survey 2011*, September 2012.

1.4 Special educational needs (SEN)

In addition to providing FFE availability, the school headcount also gives some insight into the special educational needs of children aged three and four years old on roll, as summarised in Table 1.4a. As a comparator, Table 1.4b gives the percentage of children on roll within early years settings with a special educational need, taken from the 2012 Family Information Service (FIS) annual update. These children are those entitled to FFE and aged 3 and 4 years .

School action (SA) is used when there is evidence that a child is not making progress at school and there is a need for action to be taken to meet learning difficulties. School action plus (SA+) is used where SA has not been able to help the child make adequate progress. At SA+ the school will seek external advice from the LEA's support services, the local Health Authority or from Social Services¹².

A Statement is a document which sets out a child's SEN and any additional help that the child should receive. The aim of the Statement is to make sure that the child gets the right support to enable them to make progress in school¹³.

Table 1.4a: Summary of children on headcount with special educational needs: Spring 2013

Locality	No special need identified	School action	School action plus	Statement of SEN
Freshney	96.7%	0.0%	3.3%	0.0%
Park	98.3%	0.0%	1.7%	0.0%
South	100.0%	0.0%	0.0%	0.0%
West Marsh	89.8%	2.0%	8.2%	0.0%
Yarborough	95.9%	2.7%	1.4%	0.0%
Central Total	96.7%	0.9%	2.4%	0.0%
East Marsh	95.7%	0.0%	4.3%	0.0%
Heneage	96.9%	0.8%	2.4%	0.0%
Sidney Sussex	92.2%	0.0%	3.9%	3.9%
Fiveways Total	95.6%	0.4%	3.1%	0.9%
Immingham	95.7%	0.0%	4.3%	0.0%
Immingham Total	95.7%	0.0%	4.3%	0.0%
Croft Baker	95.8%	0.8%	3.4%	0.0%
Haverstoe	96.8%	0.0%	3.2%	0.0%
Humberston and New Waltham	96.8%	0.0%	3.2%	0.0%
Meridian Total	96.4%	0.3%	3.3%	0.0%
Scarcho	100.0%	0.0%	0.0%	0.0%
Waltham	95.6%	0.0%	4.4%	0.0%
Wolds	97.6%	0.0%	2.4%	0.0%
Wolds Total	97.0%	0.0%	3.0%	0.0%
Grand Total	96.4%	0.4%	3.0%	0.2%

¹² Source: <http://www.specialeducationalneeds.co.uk/UsefullInformation/SEN-EducationInfo/SchoolAction.html>

¹³ Source: <http://www.specialeducationalneeds.co.uk/UsefullInformation/SEN-EducationInfo/statementofSEN.html>

- Based on the Spring 2013 Headcount, 3.6% of children were reported to have a special educational need of some degree, 3% of which have been identified at the SA+ stage.
- At neighbourhood level, Fiveways and Immingham have the highest proportion of pupils with SEN, with 4.4% and 4.3% of pupils respectively. Fiveways has the only Statemented pupils identified from the headcount.
- At ward level, West Marsh has by far the highest proportion of children with SEN, at 10.2%, while there are no pupils in Scartho and South wards with any SEN.

Table 1.4b shows the response of settings from the FIS questionnaire update.

Table 1.4b: Summary of children in early years settings with special educational needs: 2012

Locality	Children with SEN	Children with a Statement of SEN	Children on roll
Freshney	9.0%	0.0%	244
Park	5.7%	0.8%	706
South	4.7%	0.0%	127
West Marsh	4.8%	0.0%	311
Yarborough	3.4%	0.4%	237
Central total	5.6%	0.4%	1,625
East Marsh	2.5%	0.0%	157
Heneage	2.9%	0.0%	68
Sidney Sussex	7.2%	0.8%	264
Fiveways total	5.1%	0.4%	489
Immingham	0.8%	0.0%	129
Immingham total	0.8%	0.0%	129
Croft Baker	7.4%	2.3%	257
Haverstoe	2.6%	0.0%	152
Humberston and New Waltham	1.6%	0.2%	507
Meridian total	3.4%	0.8%	916
Scartho	2.0%	0.0%	404
Waltham	0.0%	0.0%	228
Wolds	3.4%	0.0%	387
Wolds total	2.1%	0.0%	1,019
North East Lincolnshire total	4.0%	0.4%	4,178

- Findings from the 2012 FIS update shows that of the 4,178 children on roll, 4% have been identified as having special educational needs and of those, 0.4% have a Statement of SEN.
- At neighbourhood level, the largest proportion of children with SEN is in Central, however this also has the largest child population.
- 0.8% of children on roll in Immingham have an identified SEN, which is well below other neighbourhood areas.
- Freshney and Croft Baker wards have the highest proportion of children with SEN, at 9% and 7.4%.

1.5 Cost of childcare

The tables in this section detail the latest available childcare costs, taken from the FIS Tribal database. Please note that careschemes often offer various costing options such as hourly, sessional, daily, weekly and termly. Due to the small number of carescheme types in some areas, the costings have been optimised for each carescheme and a full range of costings has not been provided.

Table 1.5a: Average hourly costs within day nursery provisions: 2012

Locality	Average hourly cost		
	Under two year olds	Two to three year olds	Three years old and above
Freshney	£4.70	£4.40	£4.40
Park	£4.51	£4.37	£4.30
South	£5.00	£4.73	#
West Marsh	£4.50	£4.50	£4.50
Yarborough	£4.70	£4.55	£4.05
Central total	£4.64	£4.51	£4.27
East Marsh	£4.00	£3.76	£3.52
Heneage	£4.90	£4.60	£4.60
Sidney Sussex	£3.80	£3.80	£3.70
Fiveways total	£4.23	£3.98	£3.94
Immingham	£5.10	£5.10	£5.10
Immingham total	£5.10	£5.10	£5.10
Croft Baker	£4.20	£4.00	£4.00
Haverstoe	£4.30	£4.00	£3.80
Humberston and New Waltham		£4.00	£3.50
Meridian total	£4.25	£4.00	£3.70
Scarho	£5.00	£4.70	£4.70
Waltham	#	#	#
Wolds	#	£3.86	£3.86
Wolds total	£5.00	£4.28	£4.28
North East Lincolnshire total	£4.56	£4.32	£4.13

provision not available.

- Day nursery costs for children under 2 years old across NEL range from an average of £4.56 for under two year olds to £4.13 for three years and above.
- At ward level, average hourly day nursery costs are predominantly more expensive in Immingham, Scartho and South.
- By comparison, costs for all ages in Sidney Sussex and Wolds are under £4.00 per hour, indicating much less expensive provision.

Table 1.5b: Average costs per session within pre-school playgroups: 2012

Locality	Average sessional cost	
	Two to three year olds	Three years old and above
Freshney	#	#
Park	£10.00	£10.00
South	#	#
West Marsh	£7.00	£7.00
Yarborough	£6.50	£6.50
Central total	£7.63	£7.63
East Marsh	#	£7.00
Heneage	£7.42	£7.42
Sidney Sussex	#	#
Fiveways total	£7.42	£7.28
Immingham	#	#
Immingham total	#	#
Croft Baker	£7.67	£8.50
Haverstoe	£10.50	£10.50
Humberston and New Waltham	£7.67	£7.25
Meridian total	£8.38	£8.38
Scartho	#	#
Waltham	£7.00	£7.00
Wolds	£8.25	£8.25
Wolds total	£7.63	£7.63
North East Lincolnshire total	£7.97	£7.92

provision not available.

Session times within pre-school playgroups range from between two and a half and three hours. Costs were not inclusive of any additional costs such as lunchtime costs and charges for snacks and meals.

- There is little variation in the average sessional costs for pre-school playgroups in NEL, which range from £7.97 for two to three year olds to £7.92 for three years and above.
- Within neighbourhoods, Meridian has the highest average costs for pre-school playgroups at £8.38 per session (all ages), while the lowest can be found in Fiveways, at £7.42 (two to three year olds) and £7.28 (three years and above).

- There are four providers whose cost per session is over £10, two are located within Haverstoe ward, one in Park and one in Croft Baker.
- The least expensive sessional cost for pre-school playgroups can be found in Yarborough ward, where the average is £6.50.

Table 1.5c: Average sessional costs within out of school clubs: 2012

Locality	Average sessional cost for three years old and above
Freshney	£6.50
Park	£6.95
South	#
West Marsh	£7.75
Yarborough	£6.50
Central total	£7.05
East Marsh	£10.00
Heneage	#
Sidney Sussex	£8.50
Fiveways total	£9.25
Immingham	#
Immingham total	#
Croft Baker	£9.00
Haverstoe	£10.00
Humberston and New Waltham	£7.00
Meridian total	£8.25
Scartho	£8.00
Waltham	£7.00
Wolds	£7.00
Wolds total	£7.33
North East Lincolnshire total	£7.62

provision not available.

- There is no out of school provision in Immingham.
- Average out of school club sessional costs were lowest in Central at £7.05 and highest in Fiveways, at £9.25.
- The lowest average cost per session is £6.50 (Freshney and Yarborough), while the highest cost is £10.00 per session (East Marsh and Haverstoe).
- Out of school costs will naturally vary due to the differences in session lengths, which can range from two hours to three and a half hours.

Table 1.5d: Average hourly childminder costs: 2012

Locality	Average hourly cost		
	Under two year olds	Two to three year olds	Three years old and above
Freshney	£3.81	£3.78	£3.78
Park	£3.93	£3.93	£4.00
South	£3.67	£3.67	£3.67
West Marsh	#	£3.40	#
Yarborough	£3.67	£3.67	£3.67
Central total	£3.78	£3.75	£3.78
East Marsh	£3.50	£3.50	£3.50
Heneage	£3.78	£3.78	£3.78
Sidney Sussex	£3.79	£3.78	£3.78
Fiveways total	£3.77	£3.76	£3.76
Immingham	£3.75	£3.75	£3.75
Immingham total	£3.75	£3.75	£3.75
Croft Baker	£3.88	£3.88	£3.88
Haverstoe	£3.96	£3.96	£3.96
Humberston and New Waltham	£4.00	£4.00	£4.00
Meridian total	£3.94	£3.94	£3.94
Scarho	£3.70	£3.70	£3.70
Waltham	£4.03	£4.03	£4.03
Wolds	£4.03	£4.03	£4.03
Wolds total	£3.99	£3.99	£3.99
North East Lincolnshire total	£3.85	£3.84	£3.85

provision not available.

- Average childminder costs do not vary much by area or by age. The most affordable childminders can be found in Immingham, where costs were an average of £3.75 per hour, while the most expensive area is Wolds where average childcare costs were £3.99 per hour.
- The average hourly cost is lowest within West Marsh and East Marsh, at £3.40 and £3.50 respectively, while they are highest in Waltham and Wolds wards, both at £4.03 per hour.
- Further analysis of FIS update data highlights that of all registered childminders:
 - 11.7% charge additional costs for meals.
 - 1% include meals in their costs.
 - 19.1% offer a sibling reduction for two or more siblings attending.

1.6 Ethnicity

Table 1.6a provides a summary of the ethnic background of children aged three and four years old on roll, taken from the Spring 2013 Headcount. For the benefit of this analysis, the category of Black and Minority Ethnic (BME) encompasses all ethnic groups that are not White British. Please note that to provide a more accurate analysis, records where ethnicity is not known or obtained have been omitted from these results, thus providing an ethnicity split for those pupils whose ethnicity is known.

For comparison, Table 1.6b shows the ethnic background of children on roll within early years settings, taken from the 2012 FIS annual update.

Table 1.6a: Summary of children on headcount, by ethnic group: Spring 2013

Locality	White British	BME
Freshney	90.9%	9.1%
Park	88.9%	11.1%
South	96.4%	3.6%
West Marsh	86.7%	13.3%
Yarborough	97.1%	2.9%
Central total	91.9%	8.1%
East Marsh	86.0%	14.0%
Heneage	94.9%	5.1%
Sidney Sussex	97.6%	2.4%
Fiveways total	93.6%	6.4%
Immingham	93.2%	6.8%
Immingham total	93.2%	6.8%
Croft Baker	91.4%	8.6%
Haverstoe	97.8%	2.2%
Humberston and New Waltham	90.2%	9.8%
Meridian total	93.0%	7.0%
Scartho	95.2%	4.8%
Waltham	94.3%	5.7%
Wolds	85.7%	14.3%
Wolds total	90.9%	9.1%
North East Lincolnshire total	92.4%	7.6%

- From the Spring 2013 Headcount, 7.6% of all pupils whose ethnicity is known are from a BME background.
- Data from the 2011 Census indicates that in NEL, 4.6% of the entire population is classed as BME¹⁴.

¹⁴ Source: North East Lincolnshire Informed, Population – Census: Ethnicity (Census 2001 and 2011), <http://www.nelincsdata.net/IAS/>

- There are pockets within NEL that have a larger child BME population, particularly in Wolds (14.3%), East Marsh (14%) and West Marsh (13.3%).
- These figures will show variance from 2011 Census data due to the much smaller sample of the population used.

Table 1.6b: Summary of children in early years settings, by ethnic group: Spring 2013

Locality	White British	BME
Freshney	96.7%	3.3%
Park	93.7%	6.3%
South	96.9%	3.1%
West Marsh	91.2%	8.8%
Yarborough	97.5%	2.5%
Central total	95.1%	4.9%
East Marsh	87.2%	12.8%
Heneage	96.5%	3.5%
Sidney Sussex	97.3%	2.7%
Fiveways total	94.0%	6.0%
Immingham	99.2%	0.8%
Immingham total	99.2%	0.8%
Croft Baker	94.2%	5.8%
Haverstoe	94.9%	5.1%
Humberston and New Waltham	94.5%	5.5%
Meridian total	94.5%	5.5%
Scarcho	95.8%	4.2%
Waltham	97.9%	2.1%
Wolds	97.9%	2.1%
Wolds total	96.9%	3.1%
North East Lincolnshire total	95.4%	4.6%

- Data from the 2012 FIS update shows that 4.6% of children on roll are classed as BME, which is more in line with ethnicity estimates for the region taken from the 2011 Census.
- East Marsh and West Marsh have a higher proportion of BME residents, from the 2011 Census, which is reflected in Table 1.6a.

2. Demand for childcare

2.1 Occupancy

The 2012 FIS update allows estimates of occupancy within childcare settings to be calculated. There are however some health warnings around this data:

- Overall response rates for the 2012 FIS annual update were low, at 67.7%.
- There were fewer responses from childminders (65.2%) and out of school providers (66.7%).
- Of those providers who responded, not all provided full details of how many places were available/occupied.
- Occupancy is estimated as a proportion of all registered places, therefore where there have been gaps in responses, overall occupancy will proportionately decline.

Table 2.1a: Estimated occupancy rates of registered childcare: 2011/12

Locality	Estimated occupancy rate
Freshney	56.1%
Park	88.0%
South	78.5%
West Marsh	26.8%
Yarborough	43.1%
Central total	65.8%
East Marsh	73.1%
Heneage	86.5%
Sidney Sussex	81.4%
Fiveways total	80.6%
Immingham	51.1%
Immingham total	51.1%
Croft Baker	70.4%
Haverstoe	74.8%
Humberston and New Waltham	80.5%
Meridian total	75.5%
Scartho	88.7%
Waltham	85.9%
Wolds	51.1%
Wolds total	76.3%
North East Lincolnshire total	71.2%

- The overall occupancy rate for NEL stands at 71.2%.
- Occupancy is highest within Fiveways and Wolds, with rates of 80.6% and 76.3% respectively.
- At ward level, occupancy varies significantly from a high of 88.7% in Scartho to a low of 26.8% in West Marsh.

In conjunction with calculated occupancy rates, childcare settings were also asked to estimate their average occupancy rate for the past 12 months as well as to provide reasons for any low occupancy, shown in Table 2.2b.

Data on occupancy levels needs to be viewed with care as responses were low and we would expect occupancy levels to be higher than those reported.

Table 2.2b: Estimated occupancy of registered childcare, by carescheme type: 2011/12

Carescheme type	Estimated occupancy					
	Under 30%	31 - 50%	51 - 70%	71 - 90%	91 - 99%	100%
Breakfast Club	7.7%	7.7%	30.8%	46.2%	7.7%	0.0%
Childminder	12.7%	19.0%	30.2%	19.0%	17.5%	1.6%
Creche	0.0%	0.0%	0.0%	100.0%	0.0%	0.0%
Day nursery	0.0%	0.0%	38.5%	61.5%	0.0%	0.0%
Holiday Scheme	0.0%	30.8%	46.2%	15.4%	0.0%	7.7%
Out of School Care	5.9%	5.9%	35.3%	47.1%	0.0%	5.9%
Pre-School Playgroup	7.7%	0.0%	15.4%	46.2%	30.8%	0.0%
Grand Total	8.2%	13.4%	31.3%	32.8%	11.9%	2.2%

- Based on responses from early years providers, 62.2% of all providers gave their estimated occupancy over the past 12 months as between 51% and 90%.
- 8.2% of all providers stated that they were under occupied (less than 30%), with most of these providers being childminders.
- Only 2.2% of providers claim to be fully occupied in the past 12 months, indicating that there is still adequate provision available across all sectors of childcare.
- 61.5% of day nurseries (full day care) and 76.9% of pre-school playgroups (sessional) gave their estimated occupancy as over 70%, highlighting that there may be less availability within these settings.
- Of those settings whose estimated occupancy was under 30%, the following reasons were given:
 - Personal choice.
 - Maternity leave.
 - Economic climate/recession.
 - Family circumstances.
 - Lack of enquiries.

- Loss of employment.
- Newly registered.
- Parents and families who are unemployed providing non-registered childcare.

2.2 Vacant places

Responses from the 2012 FIS update concerning vacant childcare places within NEL are shown in Table 2.3a. Settings were asked why they were choosing not to fill any vacant places, and if yes, to provide reasons why.

- Of those providers who responded, 10.3% stated that they were choosing not to fill any of their vacant places.
- 91.2% of settings choosing not to fill vacant places were childminders.
- When asked, providers gave the following reasons to explain their decision:
 - Alternative work sought.
 - Do not provide care for under three year olds.
 - Due to larger numbers of older children cared for after school.
 - For quality care/lower ratios.
 - Children who are at school fill places during school holidays.
 - Personal reasons/other commitments.
 - Financially secure so no need to fill places.

2.3 Waiting lists

Table 2.4a details the volume of children currently on a waiting list to attend a childcare setting within NEL, based on responses from the 2011 FIS update. Results have been analysed by age groups to ascertain if childcare for certain age groups is over-saturated within certain areas of NEL.

Table 2.3a: Volume of children on a waiting list for childcare in NEL: 2011/12

Locality	Children on waiting list		Children on roll
	Number	Percentage	
Freshney	1	0.4%	244
Park	58	8.2%	706
South	0	0.0%	127
West Marsh	25	8.0%	311
Yarborough	10	4.2%	237
Central total	94	5.8%	1,625
East Marsh	0	0.0%	157
Heneage	6	8.8%	68
Sidney Sussex	3	1.1%	264
Fiveways total	9	1.8%	489
Immingham	0	0.0%	129
Immingham total	0	0.0%	129
Croft Baker	12	4.7%	257
Haverstoe	9	5.9%	152
Humberston and New Waltham	83	16.4%	507
Meridian total	104	11.4%	916
Scartho	5	1.2%	404
Waltham	0	0.0%	228
Wolds	7	1.8%	387
Wolds total	12	1.2%	1,019
North East Lincolnshire total	219	5.2%	4,178

- There were a total of 219 children on a waiting list for childcare in NEL, according to responses from the 2012 FIS update.
- Proportionately, Meridian and Central have the highest percentage of children on waiting lists, at 11.4% and 5.8% respectively.
- There is a high demand for childcare in Humberston and New Waltham ward, indicated by the 16.4% of children on roll who are on a waiting list.
- 97.7% of children on waiting lists are aged under five years, with 36.1% being for those under two years of age.
- Further analysis showed that 158 children (72.1%) were on a waiting list to attend a pre-school playgroup, 32 (14.6%) for a day nursery, 27 (12.3%) for childminders and 2 (0.9%) for an out of school club.

Please note some parents will place their child on a waiting list for a preferred setting whilst their child is attending another setting. Some parents will also place a young child on a waiting list for a setting whilst waiting for the child to reach the age that the setting intakes.

3. Appendices

3.1 Sources of information

Family Information Service, Riverside Children's Centre, Central Parade, Grimsby, DN34 4HE

Integrated Family Services, Riverside Children's Centre, Central Parade, Grimsby, DN34 4HE

Childcare Quality Improvement Team, Serco, Western Technology Site, Cambridge Road, Grimsby, DN34 5TD

ICT Client Solutions, Cleethorpes Civic Offices, Knoll Street, Cleethorpes, DN35 8LN

North East Lincolnshire Council

www.nelincs.gov.uk

Office of National Statistics

www.statistics.gov.uk

ONS Neighbourhood Statistics

www.neighbourhood.statistics.gov.uk

Hull and East Riding Health Informatics Service

www.eastridingandhullhealth.nhs.uk

Department for Education

www.dfe.gov.uk

Joseph Rowntree Foundation

www.jrf.org.uk

Office for Standards in Education (Ofsted)

www.ofsted.gov.uk

North East Lincolnshire Childcare Sufficiency Assessment 2012/13 refresh

Prepared by:

Informatics and Research team
Commissioning and Information Systems,
Resources directorate,
Cleethorpes Civic Offices,
Knoll Street,
Cleethorpes,
DN35 8LN

Document Reference: *NELC.02.01.34.02*
Title: *Childcare Sufficiency Assessment 2012/13 refresh*
Author: *Informatics and Research team*
Published: *April 2013*