



CONTENTS

Section A: Executive Summary	4
A1: Introduction.....	4
A2: Methodology.....	4
Paper copies distributed to:.....	4
Posters A3 and A4 distributed to: (directed to website).....	4
Media release, covered in: (directed to website).....	4
Social Media (directed to survey)	4
NELC Consultation Webpage – Live at 4pm on 9 June	5
Email to Elected members	5
Email to 148 identified stakeholders.....	5
Email sent to consultation mailing list members.....	5
NELC staff email	5
NELC staff magazine article (vision)	5
NELC Intranet Article	5
Roadshow events.....	5
A3: Return rates.....	6
A4: Facebook Petition.....	6
A4: Key findings.....	7
Equality Impacts.....	7
Other Impacts.....	8
A5: Recommendations	8
Section B: Results	9
B1: Demographic results	9
B1.1: Age	9
B1.2: Disability or long term illness	10
B1.3: Household members.....	11
B1.4: Location (by ward)	12
B2.1: Is climate change something you are concerned about?	13
Most participants (60%) were concerned about climate change, with the percentage of responses similar for those unsure (19%) and not concerned (21%).	13
B2.2: Do you make a conscious effort to reduce your carbon footprint? (For example using less energy, less fuel and more recycling)	13
B2.3: What ways do you try to reduce your carbon footprint in the home?	14
The categories (s) with the highest number of responses were: energy saving lightbulbs (93%), turning lights off (91%) and double glazing (91%).	14

Ward breakdown indicates that, as a majority, respondents were more inclined to wear extra and install double glazing to reduce their carbon footprint rather than use solar panels or digital control.....	14
Out of the four carbon reducing techniques/technologies, solar panel installation was the least taken up for all wards in the breakdown.	14
B2:4: What ways do you try to reduce your carbon footprint in the garden?	15
Out of the four categories, the majority of respondents (67%) reduce their carbon footprint in the garden by installing LED or solar power outdoor lights..	15
Of the four categories, composters (37%) and grow own vegetables (32%) show the least uptake in relation to carbon footprint reduction.....	15
B2:5 what ways do you try to reduce your carbon footprint when travelling?	15
Out of the seven categories, most respondents reduce their carbon footprint when travelling by choosing to walk or cycle their children to school (42%) as well as walking or cycling to work (39%).	15
The least popular methods of carbon reduction when travelling were: electric vehicle ownership (4%) and hybrid vehicle ownership (3%).	15
B2:6: What ways do you try to reduce your carbon footprint in your day to day Lifestyle?	15
Out of the four categories, the majority of respondents (91%) reduce their carbon footprint day to day by recycling.	16
Amongst the other ways respondents reduce their carbon footprint from day to day, the use of local charity shops, up-cycling and craft projects were common techniques.....	16
B2:7 Is there anything in the previous list that you would like to do but there is something stopping you?	16
Word cloud mix:	16
Appendix	25
Appendix A - Survey	25
Appendix B - Objections	29
Appendix C - Comments received by email.....	38
.....	41

Section A: Executive Summary

A1: Introduction

As part of a consultation undertaken during the summer of 2017, a number of questions were asked in relation to energy and carbon.

A2: Methodology

The consultation was predominantly completed online however paper copies were also available at many outlets across North East Lincolnshire.

Paper copies distributed to:

- Grimsby Library
- Cleethorpes Library
- Waltham Library
- Immingham Library
- Grant Thorold Library (from 27th June)
- Grimsby Customer Access Point
- Immingham Customer Access Point

Posters A3 and A4 distributed to: (directed to website)

- Grimsby Library
- Cleethorpes Library
- Waltham Library
- Immingham Library
- Grant Thorold Library (from 27th June)
- Grimsby Customer Access Point
- Immingham Customer Access Point
- All Family Hubs across North East Lincolnshire

The online consultation was promoted across many platforms, The engagement of these has been provided below:

Media release, covered in: (directed to website)

- Grimsby Telegraph - 12 June
- Cleethorpes Chronicle - 22 June

Other media platforms are unmonitored

Social Media (directed to survey)

- Facebook 10 June 15:05 – 19,094 reached, 2961 post clicks
- Facebook 20 June 12:09 – 4,616 reached, 682 post clicks
- Facebook (paid for) 28 June 15:52 – 1558 reached, 96 post clicks
- Facebook (paid for) 30 June 16:30 – 24,454 reached, 3540 post clicks

- Twitter 10 June 22:30, 2310 impressions, 133 total engagements
- Twitter 11 June 20:55, 1576 impressions, 90 total engagements
- Twitter 12 June 21:05, 1599 impressions, 50 total engagements
- Twitter 13 June 12:05, 2131 impressions, 60 total engagements

NELC Consultation Webpage – Live at 4pm on 9 June

2086 Unique page views (external) between 9 June – 10 July 2017

Email to Elected members

An invitation was sent on the 9 June to complete the survey themselves and to share as widely as so wished.

Email to 148 identified stakeholders

Sent on 12 June with invitation to complete and share with staff and clients.
Reminder sent on 5 July.

Email sent to consultation mailing list members

415 emails sent on 15 June, Reminder sent to 745 on 6 July

NELC staff email

Sent on 16 June

NELC staff magazine article (vision)

Published 30 June

NELC Intranet Article

13 June and 6 July

Roadshow events

B&Q, Grimsby - 14 June:

- Questionnaires completed – 12
- Questionnaires to take away and return via council offices - 17
- Website slips handed out for residents to complete questionnaire online – 15
- Residents engaged with 39

Tesco, Cleethorpes - 19 June:

- Questionnaires completed – 11

- Questionnaires to take away and return via council offices - 23
- Website slips handed out for residents to complete questionnaire online – 18
- Total number of residents engaged with – 52

Morrisons Supermarket, Laceby – 20 June:

- Questionnaires completed – 6
- Questionnaires to take away and return via council offices - 23
- Website slips handed out for residents to complete questionnaire online – 19
- Total number of residents engaged with – 53

Trailer at the Bullring, Grimsby Town Centre – 22 June:

- Questionnaires completed – 3
- Questionnaires to take away and return via council offices - 27
- Website slips handed out for residents to complete questionnaire online – 22
- Total number of residents engaged with – 68

Tesco Superstore (Grimsby) – 27 June:

- Questionnaires completed – 19
- Questionnaires to take away and return via council offices - 18
- Website slips handed out for residents to complete questionnaire online – 9
- Total number of residents engaged with – 59

East Marsh Councillors' Surgery - Grant Thorold Library – 30 June:

- Questionnaires completed – 8
- Questionnaires to take away and return via council offices - 16
- Website slips handed out for residents to complete questionnaire online – 20
- Total number of residents engaged with – 49
-

Immingham Trailer/Kennedy Way Shopping Centre - 6th July:

- Questionnaires completed – 5
- Questionnaires to take away and return via council offices - 13
- Website slips handed out for residents to complete questionnaire online – 10
- Total number of residents engaged with – 40

A3: Return rates

For this consultation a confidence level of 95% was set. This means that if the consultation was run another 20 times it would be outside of the below described confidence interval once.

There was a target set for a confidence interval of +/-3%. This equates to 1065 responses across North East Lincolnshire.

In total 2998 responses were received. The lowest confidence interval obtained was +/-1.77 % however the actual confidence interval will change from question to question.

A4: Facebook Petition

The Council received a Facebook petition during the consultation period and many comments were received within the Council consultation about there not being an option to retain a weekly collection.

People need information on the implications of each option in order to make an informed decision. In this instance, how would the service be funded if the option to reduce collection frequency was not taken. In common law it is one of the four Sedley criteria 'the proposer must give sufficient reasons for any proposal to permit of intelligent consideration and response'. In addition case law sets out that the Council is able to consult on its preferred options only, as long as reference is made to the options which do not form part of the consultation. In this instance the Council made reference to the current service as part of the consultation exercise and provided an explanation as to why this was not considered an option. As part of the consultation approach the Council chose to focus on how each household would be impacted by any of the options proposed in the consultation. Understanding the impact of change allows for appropriate mitigations to be made.

A4: Key findings

- 60% of respondents were concerned about climate change, 21% were not concerned and 19% were unsure.
- 89% of respondents stated they make a conscious effort to reduce their carbon footprint, with 11% making no conscious effort.
- Respondents were found to focus on three techniques when reducing their carbon footprint at home: 1) installation of energy saving lightbulbs (93%) 2) turning lights off (91%) and 3) installation of double glazing (91%).
- When reducing their carbon footprint in the garden, the majority (67%) installed LED or solar power outdoor lights
- When travelling, the majority of respondents (42%) walk or cycle their children to school, with (39%) choosing to walk or cycle to work.
- Day to day, respondents were predominantly (91%) found to reduce their carbon footprint by recycling.
- The majority of respondents (193) expressed an interest solar energy and the installation of solar panels.
- When asked about why participants choose to reduce their carbon footprint, 76% stated due to money savings and 70% due to environment/climate change.
- The majority of respondents (108), when asked about how as a community we can reduce NEL's carbon footprint, suggested that education would be the best way forward.

Equality Impacts

Respondents raised concerns about the cost of carbon reducing technologies, especially in relation to: the installation of solar panels, water butts and loft/wall installation, composting and investment in electric/hybrid vehicles.

In the ward breakdown of carbon reducing techniques, wards with high deprivation (i.e East & West Marsh) have the lowest uptake of solar panel installation when

compared to wards with the lowest deprivation (Haverstore and New Waltham/Humberston).

Participants with disabilities also expressed concerns regarding the difficulty in walking to reduce their carbon footprint.

Other Impacts

Electric vehicle charging points were raised as a concern due to the lack of charging points within the borough.

Public transport was also raised, with concern centering around the times in which buses run; especially during late evening travel and shift work.

Availability of information was raised as an issue for the installation of solar panels and water butts in regards to what contractors to trust, availability of space and factors that influence citing.

A5: Recommendations

- Consider running an awareness programme that provides information on which companies can provide carbon saving technologies and the considerations to be undertaken when considering the installation of such technologies.
- Install additional electric vehicle charging points at strategic locations within the borough.
- Ensure adequate cycle paths are available to the public to provide safe travel by/on roads.
- Publish and advertise current/future cycle routes on NELC website.
- Provide safe storage for bicycles at various locations within the borough.
- Encourage car sharing, cycling and home working where possible.
- Ensure public transport is available at peak working hours i.e. for shift work and late evening travel.
- Ensure villages have accessibility to trusted public transport options.
- Provide incentives for those willing to install solar farms and/or solar panels on land or homes within the borough
- Consider turning off or dimming streetlights after 1 am.

Section B: Results

B1: Demographic results

The consultation reached a vast cross-section of residents and efforts were made to balance out the respondents to be more representative of the population of North East Lincolnshire.

All of the data in this section that relates to the demographics of North East Lincolnshire such as; age; disability; household composition; households per ward; has been sourced from North East Lincolnshire Data Observatory which in turn has a number of different sources. <http://www.nelincsdata.net/>

A paid for Facebook post targeted at:

- 20-34 year olds
- Live within the West Marsh, East Marsh and South Wards
- Single person households

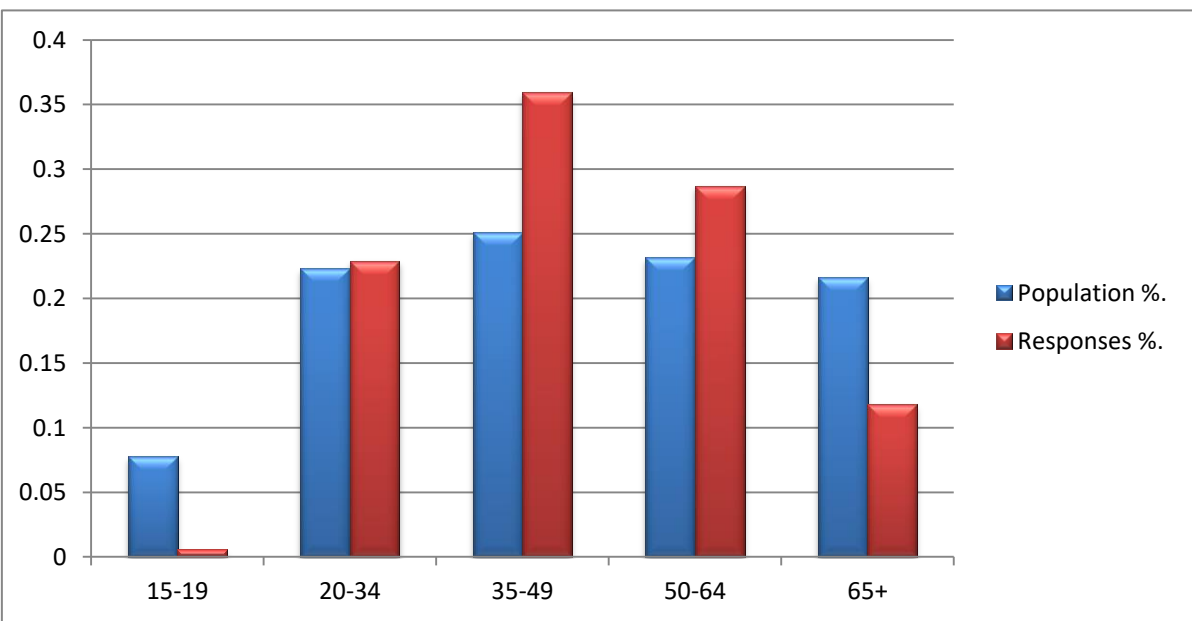
Proved to be ineffective at increasing the response rate for these specific demographics.

Elderly residents were targeted at the roadshow events to increase their representation.

Young people were engaged through the Duke of Edinburgh group and Youth Action Group.

As the targeting did not work out to be very effective the results will be weighted to give a better reflection of what the people of North East Lincolnshire. This is still skewed however as those that are impacted more by these changes are more likely to respond.

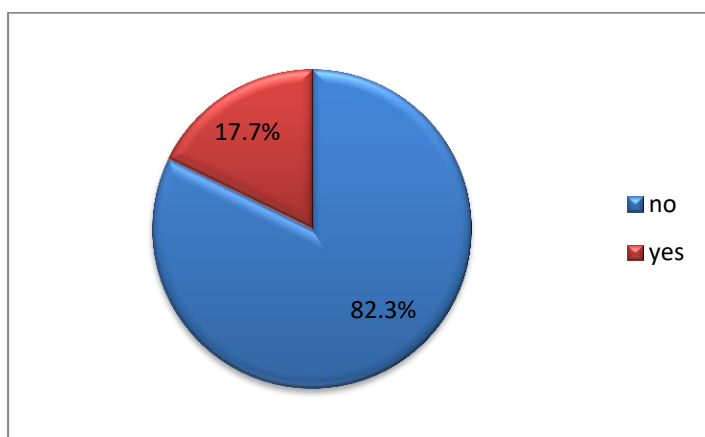
B1.1: Age



Age bracket	Under/over representation (%)
15-19	-92%
20-34	+3%
35-49	+43%
50-64	+24%
65+	-45%

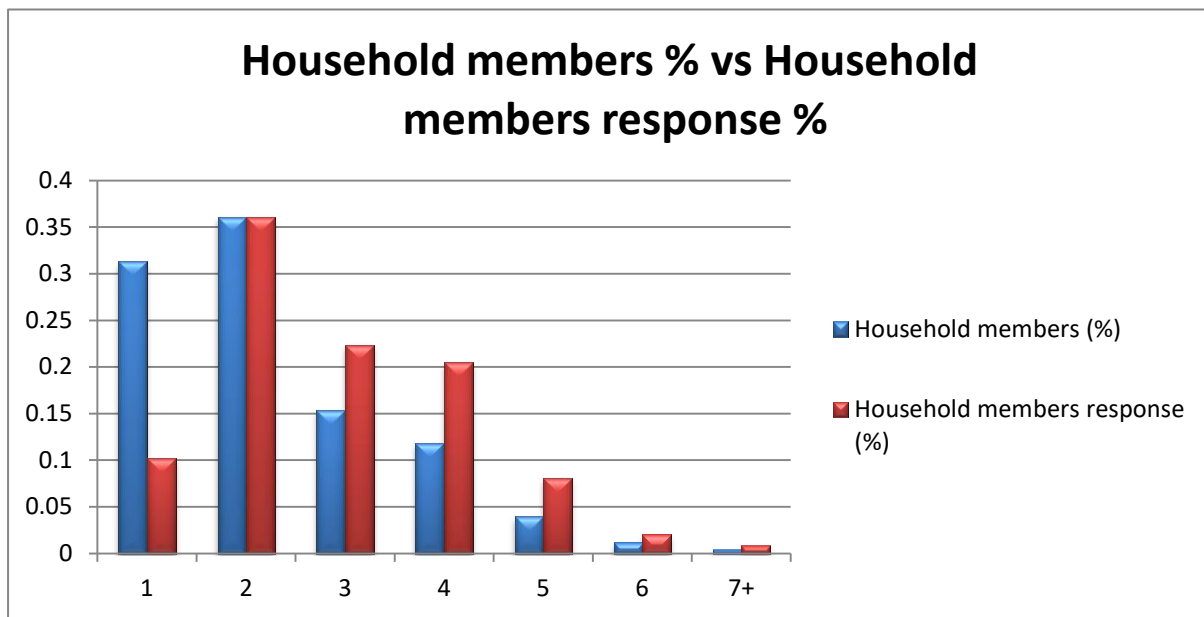
Those between the ages of 15-19 were under represented but this is likely because they are not home owners or concerned about the changes to waste collections. Those between the age of 35 and 64 were over represented. Those 65 and older were under represented but this is likely because 91% are living in one or 2 person households.

B1.2: Disability or long term illness



The response from those disabled is 2% short of what would be expected in North East Lincolnshire (20%).

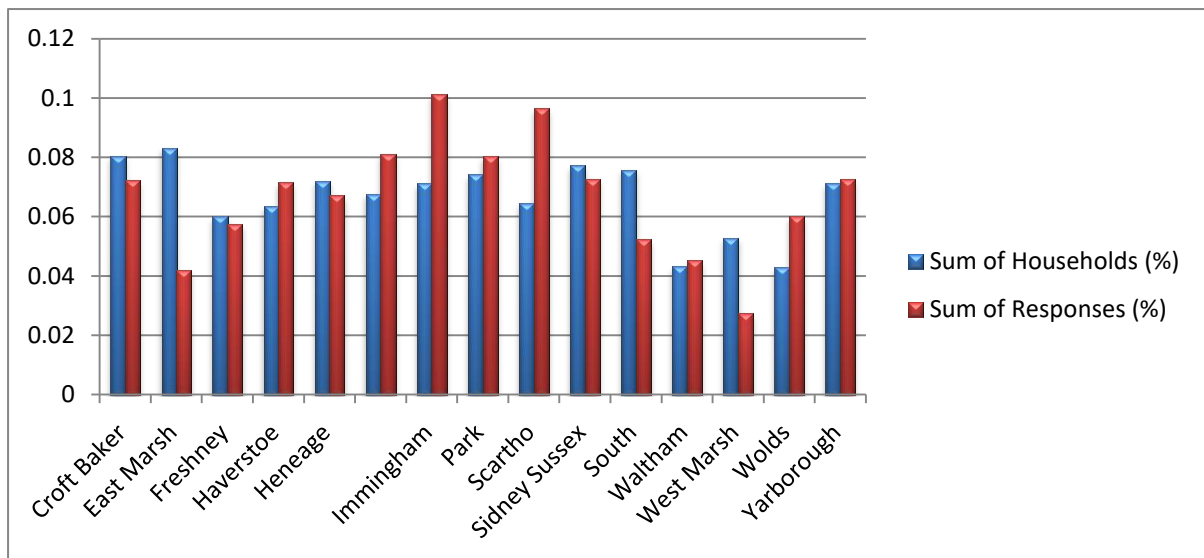
B1.3: Household members



household	Under/over representation (%)
1	-67%
2	0%
3	+46%
4	+73%
5	+105%
6	+70%
7+	+112%

It can be seen that those with more members in their household are more likely to respond to this consultation.

B1.4: Location (by ward)

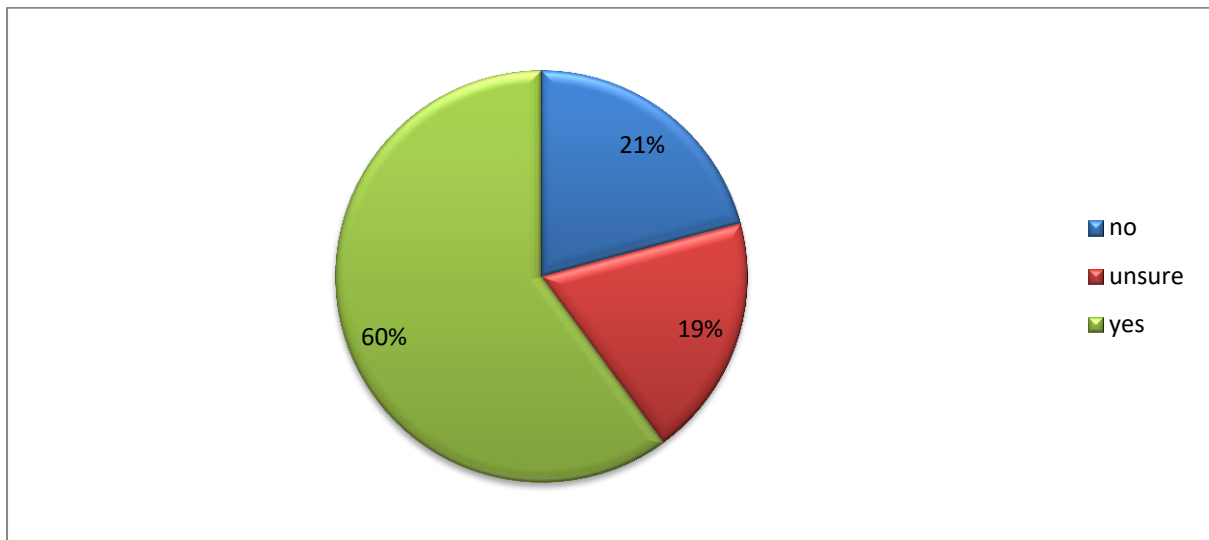


Ward	Under/over representation (%)
East Marsh	-49%
West Marsh	-48%
Sidney Sussex	-6%
Heneage	-7%
South	-31%
Croft Baker	-10%
Yarborough	+2%
Freshney	-5%
Park	+8%
Immingham	+42%
Scartho	+49%
Wolds	+40%
Haverstoe	+13%
Waltham	+5%
Humberston and New Waltham	+20%

South, West marsh and East marsh were all considerably under represented. Efforts were made to increase the response rate from these wards on Facebook as detailed in B1.

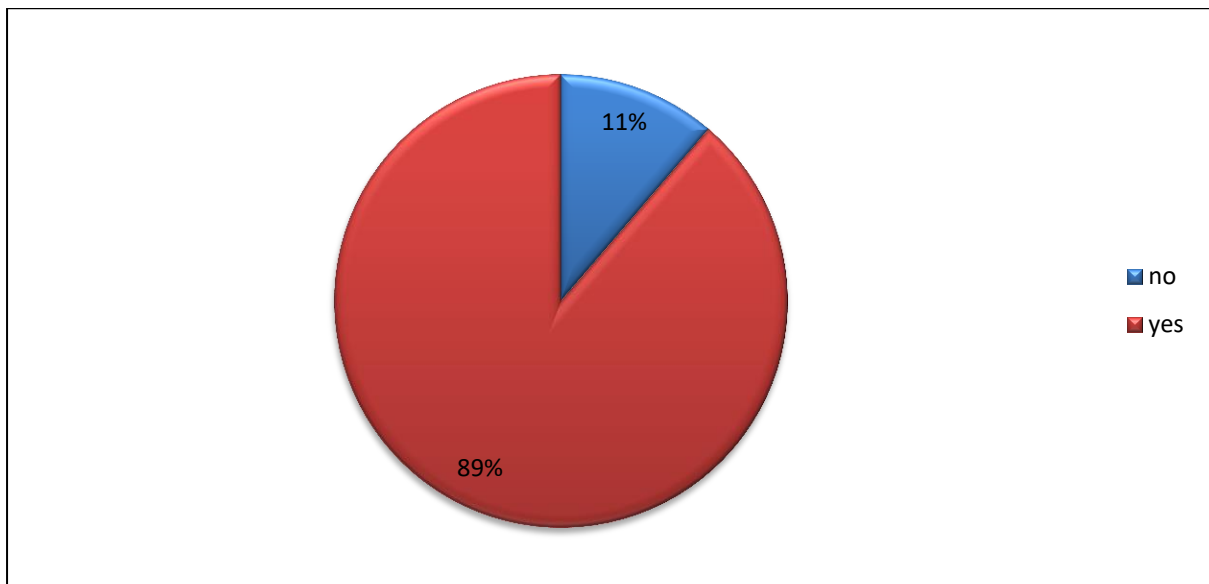
B2: Survey results

B2.1: Is climate change something you are concerned about?



Most participants (60%) were concerned about climate change, with the percentage of responses similar for those unsure (19%) and not concerned (21%).

B2.2: Do you make a conscious effort to reduce your carbon footprint? (For example using less energy, less fuel and more recycling)



Most participants make a conscious effort to reduce their carbon footprint, with only 11% stating that they don't make a conscious effort.

B2.3: What ways do you try to reduce your carbon footprint in the home?

The ways in which to reduce your carbon footprint at home were split into 8 main categories.

The categories (s) with the highest number of responses were: energy saving lightbulbs (93%), turning lights off (91%) and double glazing (91%).

What ways do you try to reduce your carbon footprint in the home?								
Method	Energy saving lightbulbs	Turning lights off	Loft insulation	Double glazing	Solar roof panels	Wearing extra clothes indoors	Alternative heat	Digital to control energy and heat
Responses	2704	2641	2392	2647	186	1471	130	840
%	93%	91%	82%	91%	6%	51%	4%	29%

Ward breakdown indicates that, as a majority, respondents were more inclined to wear extra and install double glazing to reduce their carbon footprint rather than use solar panels or digital control.

Out of the four carbon reducing techniques/technologies, solar panel installation was the least taken up for all wards in the breakdown.

ward	response	wear extra	% resp. (WEC)	Double glazing	% rep (DG)	solar panels	% resp. (SP)	Digital control	% resp. (DC)
Croft Baker	208	108	52%	184	88%	4	2%	52	25%
East Marsh	121	58	48%	96	79%	2	2%	38	31%
Freshney	165	83	50%	149	90%	21	13%	50	30%
Haverstoe	206	93	45%	187	91%	16	8%	59	29%
Heneage	193	105	54%	174	90%	8	4%	55	28%
Humberston and New Waltham	233	109	47%	218	94%	15	6%	52	22%
Immingham	291	140	48%	263	90%	29	10%	98	34%
Park	231	124	54%	194	84%	8	3%	49	21%
Scartho	277	127	46%	245	88%	12	4%	69	25%
Sidney Sussex	209	102	49%	181	87%	4	2%	82	39%
South	150	64	43%	121	81%	10	7%	48	32%
Waltham	130	61	47%	120	92%	12	9%	38	29%
West Marsh	79	45	57%	63	80%	1	1%	13	16%
Wolds	173	90	52%	159	92%	17	10%	45	26%
Yarborough	209	98	47%	186	89%	17	8%	53	25%

B2:4: What ways do you try to reduce your carbon footprint in the garden?

What ways do you try to reduce your carbon footprint in the garden?				
Method	LED or solar power outdoor lights	Water butts	Composters	Grow own vegetables to reduce
Responses	1429	1211	793	686
%	67%	57%	37%	32%

Out of the four categories, the majority of respondents (67%) reduce their carbon footprint in the garden by installing LED or solar power outdoor lights.

Of the four categories, composters (37%) and grow own vegetables (32%) show the least uptake in relation to carbon footprint reduction.

B2:5 what ways do you try to reduce your carbon footprint when travelling?

What ways do you try to reduce your carbon footprint when traveling?							
Method	Electric vehicle owner	Hybrid vehicle owner	Use of public transport instead of car	Car share	Cycle instead of using the car	Walk or cycle children to school	Walk or cycles to work
Responses	71	56	540	375	515	712	658
%	4%	3%	32%	22%	31%	42%	39%

Out of the seven categories, most respondents reduce their carbon footprint when travelling by choosing to walk or cycle their children to school (42%) as well as walking or cycling to work (39%).

The least popular methods of carbon reduction when travelling were: electric vehicle ownership (4%) and hybrid vehicle ownership (3%).

B2:6: What ways do you try to reduce your carbon footprint in your day to day Lifestyle?

What ways do you try to reduce your carbon footprint in your day to day lifestyle?
--

Method	Recycle	Buying from more local shops	Re-use wooden furniture	Other (individual comments further on)
Responses	2424	1638	847	104
%	91%	61%	32%	4%

Out of the four categories, the majority of respondents (91%) reduce their carbon footprint day to day by recycling.

Amongst the other ways respondents reduce their carbon footprint from day to day, the use of local charity shops, up-cycling and craft projects were common techniques.

B2:7 Is there anything in the previous list that you would like to do but there is something stopping you?

Word cloud mix:

count	word
105	solar
88	panels
54	work
52	car
51	transport
50	cost
46	expensive
44	afford
42	cycle
33	recycle
30	bus
29	local
28	time
26	water
25	electric
25	garden
25	waste
24	walk
24	recycling
24	shops
23	council
22	house
21	energy
19	money

B2:8: Why do you choose to reduce your carbon footprint?

Out of the six categories, the participants' main reason for choosing to reduce their carbon footprint was that it saves money (76%).

Closely following, a large proportion of participants (70% and 69%) choose to reduce their carbon footprint due to environment/climate change or because it's the right thing to do.

Why do you choose to reduce your carbon footprint?						
Method	Saves money	Environment/climate change	No option to use anything else	My family and friends say I should	It's the right thing to do	Other
Responses	1944	1781	59	20	1765	23
%	76%	70%	2%	1%	69%	1%

B2:9: What can we do as a community to help reduce North East Lincolnshire's carbon footprint. (Please let us have any ideas)

count	word	18	power	11	paths
108	educate	18	promote	11	renewable
84	light	18	shop	10	big
76	cycle	17	children	10	food
67	solar	17	walk	10	packaging
66	transport	16	incentives	10	plastic
65	work	15	cost	9	afford
63	cars	15	green	9	awareness
62	homes	15	car parking	9	care
61	bus	15	reducing	9	environment
51	waste	14	benefits	9	NELC
40	buildings	14	cheaper	8	emissions
39	street	14	heat	8	fuel
39	traffic	14	night	8	hybrid
32	footprint	14	support	8	litter
31	vehicle	13	switch	8	parents
29	services	13	system	8	ride
27	schemes	12	bulbs	7	companies
25	business	12	LED	7	insulation
21	electric	12	parks	7	options
20	fine	12	pay	6	diesel
20	share	12	water	6	plant
19	roads	11	efficient		
18	items	11	offices		

Other ways respondents try to reduce their carbon footprint.

1. Economic driving to minimise fuel.
2. Buy foods with less package only buy what I need
3. Anything to reduce cost
4. Log burner to save on heating and burn wood from managed woods.
5. Minimalism, urban gardening (square foot gardening), slow living
6. Repair and re-use as much as possible, virtually zero food waste, always walk or cycle when able.
7. Anything that saves me money. Make do and mend attitude
8. Buy from charity shops
9. Take unwanted items to charity shops, pass to friends, use train when can
10. Vegan
11. Recycled water underground which is used to flush the toilets.
12. Fix broken items and repair before buying new. Repurpose old items.
13. CARS WITH BETTER FUEL, PETITIONS.
14. Craft projects for shoe box appeal
15. Regularly use local charity shops
16. I buy clothes and shoes from charity shops
17. Reusing and upcycling many items plus offering unwanted good items for free rather than dumping
18. Ebay/charity shops buying and selling
19. Up cycle objects rather than buy new.
20. I reuse and recycle my kids old t-shirts by making blankets, toys or using as applique or arts crafts projects
21. I take everything reusable to charity shops. And buy from them where possible.
22. Buy second hand clothing
23. I refuse to buy products which are in one use plastic. You could put more pressure on local shops and supermarkets to stop the practice.
24. Save water from my water butt in plastic bottles. Reuse anything that I can, just about - give magazines to local GP - donate clothes etc. to charity - get family to give me the things they don't want so that they don't throw it away and i can give it to someone that needs it or reuse it.
25. I don't buy loads of stuff, make do and mend, don't follow trends or fashions in clothes or interior decorating
26. I try when possible to work agile, especially if I need to attend meetings near home. I avoid unnecessary journeys by planning round trips to visit all places close together on the same day whenever possible
27. Charity shops, second-hand
28. Making quilts from old clothes, particularly upcycling old Jeans
29. Grow own veg
30. When I get a sitter for my husband, I am an avid charity shop user, both taking and buying.

31. My energy company guarantees a minimum of 50% of my energy is from renewable sources, with an email just sent to me to show me the wind farm it came from, what proportion of it was renewable, etc. They're waiting on smart meters though, so not got one yet. Planted a tree in the garden to help offset carbon from electrical devices we use ('phones, pc's etc.) Water company came around, fitted water saving parts to taps and toilets.
32. Burn old wooden items to heat the home
33. Reduce, re-use and recycle
34. Hand things down, give to charities, repair, re-use as something different. PS why no 'walk' option on transport for other journeys than school and work, e.g. shopping? Don't eat meat - that massively reduces the carbon footprint
35. Donate cloths etc. to charity shops
36. I buy lots of things from car boot sales and charity shops and i also donate lots of things to charity shops.
37. Walk to most places
38. I walk when possible but not to work.
39. Use charity shops
40. In warm weather we use cloth nappies (can't at other times as don't have a dryer).
41. Turn worn sheets into pillowcases etc. old towels into cleaning cloths etc.
42. Use up all food in ' leftover' meals, don't buy stuff I don't need, or cannot afford! An old fashioned viewpoint!
43. Only replace when cannot be repaired
44. Buy many second-items from Ebay.
45. I sell items on line and i re-use cardboard boxes etc from shops and friends
46. Reusing plastic bottles and glass jars.
47. I encourage my family to walk/cycle to work school, buy local, volunteer locally
48. Most of our medium-term goods are bought second-hand.
49. Repair and repurpose rather than throw away and also buy from charity shops/second hand furniture shops where possible.
50. buying near out of date food to save waste and not buy non British meats and veg etc.
51. Recycle home bits
52. Using washing up water for plants; buying from charity shops where possible, not buying food from abroad, keeping chickens for eggs etc; not using the car if I can walk;
53. Several of the transport boxes are irrelevant as we do not have children or go out to work.
54. Up cycle
55. Take own bags to shops and not get plastic ones. buy used books instead of new and pass them on to charity shops. Take unwanted things to charity shops. But they don't keep them forever and must dispose of a lot of things.

56. Talking friends and neighbours into more environment friendly lifestyles.
Checking the energy ratings on all new electrical goods purchased. Walking to local independents rather than driving to the supermarket or having it delivered.
57. We don't have a TV, we re-use and recycle wherever possible, we mostly holiday in England.
58. Upcycle pallets
59. Actively campaign -involved in campaigns and activities of 'green' organisations such as Greenpeace, North East Lincolnshire Green Party, 1 Million Women, Plastic Pollution Coalition,
60. Buy second hand
61. Donate to charity shops
62. We purchase second hand clothes
63. I am vegan. Animal agriculture is the biggest contributor to global warming and completely unnecessary.
64. Selling unwanted items that are in good condition.
65. Car-Boot
66. If i can reuse things i will do
67. Recycling as much as possible
68. We upcycle anything we can
69. Going vegan dramatically reduces your carbon footprint (less than half that of an avid meat eater). Recycling, Re-using and Reducing in all aspects.
70. Upcycle to friends and family or give to charity
71. Try to mend before replacing.
72. Enjoy life not rubbish and sort shop packing out
73. Frequently use charity shops.
74. I do the make do and mend war effort with clothes and shoes
75. Repair broken items and not throw away
76. recycle clothes
77. Making my own compost reduces the amount purchased.
78. Upcycle lots of waste, coffee jars into ornaments etc
79. Buying items from charity shops
80. Buying from charity shops.
81. Charity shop purchases.
82. Take old clothes, books and sometimes furniture to charity shops
83. I buy good second hand clothes.
84. Allotment
85. Repair rather than replace items if possible.
86. My business
87. Sell/recycle old clothes and bric-a-brac. Grow garden plants from seed.
88. swap items i don't need with others, plant shrubs, flowers for wildlife,
89. Re- using as much as possible and only buying what I need.
90. Items given away via Freecycle as well as charity shops. Generally buy for quality rather than fashion and use until worn out.

91. Eurostar/ coach instead of plane.
92. Freecycle unwanted items. Use recycled building materials for home projects
93. mend clothes, save water to use in garden, use small amount for bathing, buy clothes from charity shop.
94. get out and about in winter to warm up - use hot water bottle and use water over and over in the bottle by heating it in a separate kettle. use a thermos flask to keep any boiled drinking water to keep warm for next use. water garden with any 2nd hand water, use rainwater to clean car or floors or windows and flush toilet.
95. don't buy what isn't needed
96. Reuse carrier bags. Use filter for water instead of buying bottled water.
97. No fast food; buy fewer goods; no disposable items where possible; re-use jars etc.

Other reasons for reducing the carbon footprint!

1. The wife tells me to
2. Walking more also helps keep you fit.
3. To set a good example to my children
4. help for the next generation and a future for my grandchildren
5. Biking is cheaper faster round town and ensures I get daily exercise
6. Growing your own food means the freshness and quality is often far superior to shop bought foods. We've just made our own jam with our strawberry crop and you can't even compare it to supermarket stuff! Also, unless you've tasted spuds freshly dug out of the garden you simply don't know what you're missing.
7. I work in the energy business
8. I tend to live by the principles of my childhood - buy the best quality that you can afford so that it lasts - make do and mend. Education about the principles of 50/60 years ago may help to improve the environment and household budget.
9. Fitness cycling to work
10. Lifestyle choice
11. Walking is healthier than using vehicles
12. As well as recycling, we also repurpose and re-use whenever we can. There is no such place as 'away' (as in the phrase 'throw it away'): unwanted goods - waste - has to go somewhere and eventually we will run out of room for it all. Climate change is real and has to be faced. We have only one planet.
13. I have a legal and ethical duty to the human race
14. Having lived in Switzerland where it is socially unacceptable not to recycle, it has just become a natural part of life. Perhaps the UK should be looking at other countries for inspiration?
15. Can't afford energy bills
16. I enjoy walking and cycling

17. Keeps me fit
18. Wife insists upon it, happy wife = happy life.
19. I am a law-abiding citizen, even when I consider the law to be an Ass (as in the Global Warming scam).
20. For children's future.
21. Frugal is fun! It's satisfying

Appendix

Appendix A - Survey



Waste, Recycling and the Environment **Survey closes on Monday 10th July at 12 noon**

Like other local authorities across the UK, North East Lincolnshire Council is having to carefully manage what it spends. About two thirds of the money we spend is used to help older people, vulnerable adults, children and family services. We have to provide all of our other services with what is left.

We want to find out what is important to you and to get your ideas about how we can improve our environment. Your Councillors need your views so they can consider them when making decisions about how to spend the money we have wisely.

GENERAL WASTE COLLECTIONS – Your domestic waste bin

Across North East Lincolnshire, most of our household waste (69%) currently ends up in a general waste bin. The Council has considered the current arrangement for the general waste collections but this cannot continue in the same way for the following reasons:

- We are required to make savings and continuing to collect waste on a weekly basis would not allow the required savings to be achieved.
- Many residents who are recycling are not filling their general waste bins every week.
- Keeping waste collections on a weekly basis does not provide an incentive to recycle.

Most other local authorities in the UK now collect this type of waste once every two or three weeks and some are now looking to collect even less frequently. Where councils have already reduced how often they collect this waste, or have reduced the size of the bin they have seen an increase in the amount of recycling and a reduction in the amount of waste produced.

Before we make any decisions about how we change the service we would like your views and opinions about how you think changes might affect you and your household.

If we reduce how often we collect general waste, how often do you think it should be collected?

- ☐ Every two weeks (saves £430,000 a year)
- ☐ Every three weeks (saves £880,000 a year)

If we collect general waste every two weeks what size do you think the bin should be?

- ☐ 240L Bin (This is the size of the existing bin)
- ☐ 180L Bin (Three quarters of the size of the existing bin)
- ☐ 140L Bin (Just over half the size of the existing bin)

Please note: We are not considering reducing the bin size if we move to three weekly collection.

Please use this space to tell us about how your household would be affected if we reduce how often we collect general waste or reduce the size of the bin.

What is your postcode

RECYCLING

About 31% of household waste is currently recycled in North East Lincolnshire with about 1 in 3 households using the recycling box collection service.

Recycling rates at neighbouring local authorities are all much higher at between 46-66% and there is target for all local authorities to recycle at least 50% of household waste is recycled by 2020.

In the future we would like to increase the types of waste that can be collected for recycling in North East Lincolnshire but for now we need to concentrate on the items we already collect which are plastic bottles, cans, glass and paper and card.

What do you currently recycle?

	Always	Sometimes	Never	N/a
Plastic bottles	<input type="checkbox"/>	<input type="checkbox"/>	<input type="checkbox"/>	<input type="checkbox"/>
Cans	<input type="checkbox"/>	<input type="checkbox"/>	<input type="checkbox"/>	<input type="checkbox"/>
Glass	<input type="checkbox"/>	<input type="checkbox"/>	<input type="checkbox"/>	<input type="checkbox"/>
Paper + card	<input type="checkbox"/>	<input type="checkbox"/>	<input type="checkbox"/>	<input type="checkbox"/>

What prevents you from recycling/or recycling more?

Please use this space to tell us what would encourage you to recycle or help you to recycle more plastic bottles, cans, glass and paper.

What other materials would you like to be recycling in the future?

- ☐ Food
- ☐ Textile
- ☐ Shoes
- ☐ Waste electrical equipment
- ☐ Batteries
- ☐ Other

FLY-TIPPING questions removed

DOG FOULING & LITTERING questions removed

ENERGY AND THE ENVIRONMENT questions removed

To be analysed at a later date.

Demographic questions:

The following questions are more personal in nature but will help give us a better understanding when looking at the results. This information will not be used to identify you. It will be processed in accordance with the Data Protection Act.

Age bracket

- ☐ 15-19
- ☐ 20-34
- ☐ 35-49
- ☐ 50-64
- ☐ 65+

How many members in your household

- ☐ 1
- ☐ 2

- ☐ 3
- ☐ 4
- ☐ 5
- ☐ 6
- ☐ 7+

Do you consider yourself to have a disability or long term illness

- ☐ Yes
- ☐ No

Thank you for taking the time to complete this survey. Your response will be used to inform the decision making process. Once analysed, the results will be available on our consultation webpage.

Please return your completed questionnaire to the NELC Customer Access Points:

Municipal Offices, Town Hall Square, Grimsby, DN31 1HU

or

Immingham Civic Centre Hub, Pelham Road, Immingham, DN40 1QF

Appendix B - Objections

52 objections were received about a rigged/unfair/bias survey that did not include the option to remain weekly. Only 7/52 left the question deliberately blank. These 52 comments can be viewed below:

1. Massively affected, and what a joke of a survey, IF NELincs offered a proper bin for recycling I may use it (like I used to in my old area) definitely WONT use the sad little boxes you offer as they aren't fit for purpose - Once AGAIN failing to offer a survey that offers keeping the weekly bin collections, it almost borders on corrupt offering surveys/consultations to find out what the public want, yet not offering the full list of options - Funny how the council have to make savings yet can blow 2 million on Victoria Mills!
2. Despite also using the 3 smaller boxes for recyclable waste, the green bin is often almost full after 1 week. Reducing the size of the bin would result in an inability to correctly dispose of all the household waste generated. By not even including the option for a continued weekly service (despite a large number of residents preferring this option) will surely increase the amount of flytipping and general littering we see in the area.
3. One fact everyone already knows, their bins are nearly full or overflowing with one week worth of rubbish. How does giving them a smaller bin and collecting half the amount make any sense? There are 2 people in my household and our 240l bin is full every week. Are we meant to just throw our trash in the street if you collect fortnightly and give us smaller bins? Cause I don't drive and my partner isn't allowed to drive due to illness, so how are we expected to make our way to a tip with all the rubbish.... Your survey is a joke and the is going to end up the tip if bins are collected less often or bins made smaller.
4. (There are five in our household but the form doesn't have an option for it.) We barely have enough bin space as it is with weekly collections. I'm sat here on a Sunday evening and our green bin is nearly full and will remain so until Thursday. It's like this nearly every week. Recycling would only divide the same amount of rubbish between multiple bins, and while I'm sure it's lovely from an environmental standpoint, it wouldn't solve this problem for us. I would say we're doing something wrong since we're creating so much rubbish, but after talking to multiple people with 5+ household members about this I'm inclined to say it's just par for the course. Larger households produce more waste and if you switch to fortnightly collection we're going to have a problem managing it. The only thing I can think to do is alternate between having you collect it one week and bringing it to the tip ourselves the other, especially if you give us smaller bins.
5. The options are hardly fair are they, as usual for your consultations. Why wasn't green bin reduced to fortnightly instead of triple boxes? You would have increased recycling then not reduced it, it's not rocket science!!!
6. I refuse to pick one reduced service over another reduced service. The survey

is rigged to show 100% of respondents being in favour of a reduced service. Well I am not. Our recycling boxes (having moved to a two weekly collection) are already full, and our regular bin is always full each week. No reduction in council tax = no reduced service.

7. This questionnaire's results will be misleading as it will state that people voted for every 2 weeks, when there is not an option to stay weekly. There isn't even an option to expand the bin sizes! I have 6 people plus a dog living in my household and we fill the recycle bins weekly, and even though I have asked for the bigger recycle boxes I have never seen them so after the recycle bins are full the rest of the recycling goes back in the bin. So when you state that we recycle more now, this is untrue as I now recycle less on a fortnightly system than I did on a weekly system. My bins are full at one week so an overflow of dog poo and other undesirable smells will be pouring from my overflowing bin if this happens.
8. More rubbish sat around for rat and foxes to pull about and more rubbish dump on the streets and this whole survey is bias towards the councils plan
9. I fill mine weekly! I also use the recycling boxes which are no where adeequate enough in size! These boxes must be much bigger.
Why is there no option to disagree with the proposal and keep it weekly?
10. The smell of bins in the summer is very unpleasant, we recycle but with 2 cats and a dog their 'waste' products being left in a bin for 2 weeks or more would smell disgusting.
Why is there no option for retaining the existing service as the results of this survey will not fully reflect people's views as one option is not available. So the waste department will say 'the majority of people want fortnightly collections' when the option to retain weekly isn't there.
11. If you reduce the frequency of collection but do not offer a larger sized bin then we will be unable to get rid of much of our waste as you also will only provide recycling boxes at a cost and these are too small to hold any substantial amount of waste. I have only selected the options I have as I do not feel there are any other options that suit my thoughts, if you are going to reduce collections you should increase the size of the bins not decrease them.
12. Why is there no option for every week for first question? And if it is changing to a fortnightly collection the bin should be bigger, what is the point of this survey? Seems once again the decision has been made.
13. There should be an option in this consultation to collect every week.
Households that dispose of baby waste and dog faeces in their bins need them emptying once a week in the interests of health and hygiene. Bins are already observed overflowing with the weekly collections. The proposal to move to longer periods between collection will encourage fly tipping. Also, there are many residents who cannot take excess waste to the community facilities due to mobility and transport problems.
14. The bins should be collected as they are now every week, why is this not an

choice in the survey ? a two week collection means if I miss a collection for what ever reason it will be four weeks before the next time it is collected.

15. To collect bins every 2 weeks when these are already full the day after a collection is crass stupidity and can only lead to disposal problems for residents and for wrongful disposal issues to mount to crisis point. The council can clearly fund non-essential services at present and cannot abrogate responsibility for essential services in the future. The weekly collection must be maintained and this survey attempt to restrict comment is reprehensible.
16. I understand that the bins are not being reduced if 3 weekly collection and if it goes to fortnightly then they ARE being reduced at a cost of over 1,000,000 which apparently will make its money back over around 3 years. Not as many collections and smaller bins will result in rats/mice and i understand if this is the case then owners will be responsible. Council tenants/Shoreline will be responsible if it is proved its not down to the ways tenants are living. Has the cost of this also been taken into consideration in addition to the 1,000,000 to the council/tax payers. I understand its to encourage Recycling however this means that Recycling bins will also have to be replaced with bigger ones - what would be the cost involved in that? Keeping the existing weekly pick up has not been given as an option so when the results come out they will say that people have opted for 2 or 3 weeks - which is only accurate due to option of Keep existing provision has not been given. Fly tipping may increase because of this , a knock on affect with more cost to the council unless its on private land and it will be the owner who has to pay. People may burn more rubbish , thus having a knock on affect on the environment - one day its the ozone layer next day its recycling.
17. We are a household of two, we recycle, and fill our bins weekly. In addition we pay for two bins for garden waste. We do not recommend changes to the weekly collection. Weekly collections promote a tidy and vermin free environment, which also reduces potential fly tipping issues. We object to the proposal to change this policy.
18. I could manage with a reduction in collection times and possibly a smaller bin, however, I live alone and I don't think that families with children, people with disabilities an health conditions could manage with this proposal. I wouldn't want my response to be considered as an accurate reflection that might be used to reduce collections. I noticed that the status quo was not an option on this form, had it been it would have been my preferred choice, so the choice was a worse service or even worse than that
19. I find it ridiculous that you have rigged the survey so that we cannot choose to have a weekly service! All cutting back is going to increase is vermin and fly tipping etc. The current recycling scheme is a joke as I see the bin men dumping my separated waste into a bin together anyway, yet all we have are these tiny boxes to fit 2 weeks worth of recycling which, for a family of 4 is also not enough. If you want to get more people to recycle adopt the procedures

they have in MANY other areas that have 1 large bin for plastic, cans, and cardboard and another bin for the garden waste. I know the council already is locked into a contract so this will not change for the foreseeable but what you are forcing us to choose above, is wrong! You have not allowed me the choice I would have chosen but I cannot submit my form without the green tick marks. Nice job Council. I trust when the collections go to 2 weeks, you will be reducing our council tax accordingly.

20. The bins are always full. We live with the beck running past our gardens so rats and other vermin will attack any waste that will not shut away in the bin. Struggle to bend and pick things up. Also object to not having the option of weekly collection for green bin and a better system for recycling to include more products.
21. This survey is invalid, it gives no option to remain as we are. should these proposals go ahead we'll likely end up with a similar state like rural Europe, litter adorning the streets, and bin bags everywhere
22. No problem for us as we have very little waste most weeks as we recycle/compost most of it.

I have already completed the form from my personal email address
REDACTED PERSONAL INFORMATION

I was pleased to see it was not all tick boxes and that there was space to add comments. Since I submitted the form I would like to add the following thoughts I've had.

- Why complicate things by confusing people with different size bins etc?
- While away in The Lakes we saw one authority that uses strong bags for paper, cans etc which appeared to be much more useful as they are easy to handle and easier to store than the bulky boxes, which are difficult for many people to use as they are too heavy e.g. disabled, elderly etc.
- Instead of penalising people who do want to recycle by charging them extra, why not incentivize instead? That would encourage people more and lead to NELC reaching their targets (& saving money???) You can't blame people who opt out of paying as they often have financial issues too. On that topic, we read that some countries have gone back to empty bottles being exchanged for money, which has dramatically reduced the amount of waste and increased recycling. We used to do this locally and can't understand why we can't now. O.K it would take some setting up but surely would pay for itself as it gathers momentum. If other countries can do it, why can't we?

I'd be grateful if you could add these comments to the consultation.

23. Think it's a joke it's supposed to be a consultation .. but you only give options for choices to reduce the collection frequency AND reduce the amount of refuse you are willing to collect .. I can't wait to see the state of the passageways and streets when people start dumping their excess rubbish !!!!
24. I am not prepared answer the question regarding: how often we collect general

waste. It is in my opinion a trick question. I would have expected this so called consultation to provide the option to say: happy to stay with weekly collections .The only options are two or three week collection options. The data collected could then be manipulated to say ? % of those taking part said they thought twice weekly was the best option (only a fool would opt for the three week option with a smaller bin, or one staying the same size, so the majority are going to select the two week option) Oh and low and behold the the bin size options are again engineered to in my opinion swing the results pointing to the public indicate they would prefer the bins staying same size, the alternative options are both smaller and LESS collections the only options available! I am outraged by this perfidious attempt to hoodwink me and the rest of the good folk who have taken the time to participate in this consultation.

25. Seems to be ridiculous that you are proposing to reduce frequency of collection but at the same time possibly reducing bin size. Logic suggests you should be offering to increase bin size. can you not see that some families already have overflowing bins on 1 week cycle, what do you expect to happen on a 2 or 3 week cycle? you will promote a culture of fly tipping.

Of course, in your infinite wisdom , you have already decided to reduce collections so this is not a proper consultation

, merely an attempt to get people to agree to one of your preferred options so you can subsequently claim people agreed to it in the first place.

The whole process is a sham, if you got your act together properly in the first place and approached recycling in a more professional manner then you would have reduced the need for this cutback. You have created the problem by incompetence so once again residents, who you are supposed to be serving, will suffer poorer services

26. You would end up with all my rubbish on the town hall door step, sack the idiots who came up with this survey and the jobs worth justifying his overpaid salary trying to make ridiculous cuts which losing only 1-2 members of high office would save

27. Shocking, disgusting, the whole area will become vermin ridden, much worse than it already is. Where is the option to leave our general waste to weekly??? Not even an option? Is that fair? No!!

I try to take pride in my street, but its hopeless if you propose more gaps between collections. More rubbish blown everywhere, more fly tipping, cant even imagine how much worse Grimsby can get.

28. I have adult nappies to dispose of. They take up a fair amount of room . You're not giving us the option to oppose this on this form. My recycling gets blown over. Several times it's not been taken. Maybe because there was too much. I need bigger recycling and weekly collections still.

29. I do not want to click on any of the options above as they do not include to stay the same or if moved to 2weekly collection the size of the bin will increase. These option are False economy NELC regardless of the money you will save there will be more pest problems, fly tipping, larger family's who struggle with the current weekly collections. Your money saved will end being spend else where cleaning up the rubbish that cant be disposed of in the correct manner. I do not want to go back to bin bags in the street.
30. We use recycling and also fill our bin with weekly collection. Fly tipping will increase as using the top is a nightmare and will get worse. Cost saving without thinking of the problems. But I'm sure you've already made your mind up? Why isn't the option of keeping weekly Collections and option. The recycling boxes are to small and on windy days the recycling blows all over. Provide a bin for all recycling like they do in Louth.
31. I do not agree with any of the above , how can you do a survey when all options are not included. Do you intend to use the results to say x% of residents agree to go to every two or three weeks without giving a 1 week option . I recycle every thing I can each week filling a min of 5 recycle boxes a fortnight and my green bin in 80 % to full every week I also use the waste centres 1 time per month for non general waste (household items , non useable clothing etc.)
32. We recycle as much as possible and generate little waste, but reduced collections would cause an overflow, especially with a baby. Our neighbours who always fill their bin would have extra bags, feeding the already significant rat problem in our area. It will generate a public health risk and increase fly tipping eating up all the savings you propose, whilst dragging the area down further.
- I fear that this form does not provide any other options for bigger bins, or to keep our collections, manipulating those completing it, and giving the council an easy way to massage the results in their favour.
33. Our bin is full every week, we recycle but these boxes are far too small and doesn't have enough options. Green bins need to remain ideally collection every week, if not it will result in more bin bags next to bins.
34. As there are only 2 people in our house we can just about manage with two weekly collection but for families of more than 2 people it will be very difficult to move away from weekly collection and could end up with problems of overfull bins / litter and fly tipping. Please leave the weekly collection, you have not given us that option in the above tick boxes
35. I am not in favour of either of the suggestion and feel that it should be kept as it is!!!! I have only chosen an option as I am unable to move forward with the survey
36. Your surgery is completely biased, by not giving the option of keeping the current weekly option, how is this a consultation? I have 4 children and myself,

we're in council tax band d, so the council tax I pay is extortionate at best! Your knee jerk reaction to recycle 2 weekly was frankly wrong. I'd feel better about fortnightly green collections if recycling was done weekly. As a family we recycle everything, and by week 1 my recycle bins are overflowing! What irks me the most is drive down into scabby areas of town and they are using recycling bins as planters! Your penalising the wrong people yet again! Biased and unfair consultation.

37. There should be an option on survey to keep weekly collections, without it the council is biasing the results in the direction councillors/officials have already decided and not a valid survey.
38. The bins would be more full and heavier and that would result in them not being collected at all. This is already a problem as well as there not already being enough room for some families rubbish in the bins so a smaller bin and less collections not an option
39. Just conjuring up the crazy notion of a 20m cinema... maybe the 30p charge for use of human bodily functions has raised the money for this...

It doesn't ***** matter if every "human" that lives here fills this survey out. Our retarded council will continue to spend our money on **** and give us sob stories on how they need to reduce expenditures...

I do not agree with the 2 week option but seeing as there is "no" option to leave it as it is that is the only option. A forced option.

They will get their way whichever so it doesn't ***** matter. Just wanted to state my point.

N.E. Lincs council is absolutely absurd with its decision making and expenditure.

Perhaps a reduction in council tax next year then with all the "pity stories" and savings made so the people of north east lincs can buy more ant powder and other vermin deterrents while their rubbish sits in their front gardens ?!?

Absolute *****. Savings should be made from their personal conquests and money laundering through council "approved" companies that most of the ***** own anyway.

40. This survey is pointless and does not give sufficient options or an option of rejecting all these proposals. We fully utilise our bins and all recycling equipment every week, there is no option for that.
41. I have not clicked either option on the survey as I feel a biweekly collection is unacceptable. As a household we recycle as you require and still fill our green bin. Also the collectors won't take anything in bags next to the bins so there

would be no room for overflow. Biweekly collection is not the answer. Therefore I would like it noted that I wouldn't accept a reduction in waste collection or bin size as it would cause environmental problems due to having nowhere to store refuse. Frankly I find it inconceivable that you consider this a satisfactory option.

- 42. We would have too much rubbish to take away if you changed from weekly to fortnightly- your survey is rubbish as there's no vote button to stay the same.
- 43. Errrm you have clearly already decided to reduce the number of collections! If this were a fair poll it would include the option to leave things as they are...weighted or what?!!!!
- 44. Weighted questions!!!! You are suggesting no choice that it will be reduced whatever. That is not consultation!!!!
- 45. Bin will be overflowing. Presume you will argue people voted for 2 week collection but NOT been given option of keeping weekly collections.
- 46. I'm not answering the questions above as they don't give the option of saying that I don't believe that waste collections should be reduced at all. This would be a false economy, because many people would have no choice but to dump their excess waster bags next to public bins or in other public areas, which the council will then have to pay to clear up. Therefore, I do not believe that the quoted savings will actually occur in reality if the waste reductions were actually put into practise.

In addition, I believe that this proposal disproportionately affects carers and parents of small children. One of my good friends has a teenage child who is severely disabled and uses nappies. She was very upset when I informed her that the council are proposing this change. To expect her to have to keep a large amount of soiled nappies in her bin for up to 2-3 weeks is appalling.

- 47. You don't seem to have provided an option for people to state they would prefer to stay at weekly collections.
Fortnightly collections wouldn't affect my household as much at the moment but i would prefer for recycling to be made weekly if general waste was reduced.

Also, I thoroughly object to services being further reduced when council tax bills have increased dramatically over the last few years.

- 48. We already recycle a large amount. In fact we have extra boxes as well as the standard ones. We are always left with a full bin every week despite this. Moving to two weeks or even three weeks is a joke. Unless you are going to issue everyone a double size bin, we will end up with bin bags loose at the side of the bin which your bin men do no collect now as it stands. I object wholly to both options.
- 49. none of the options presented are sufficient. My green bin is always full, as are my recycle tubs. This is a very biased, leading survey

50. This is not a consultation as you don't offer the option of continuing with a weekly collection, or a bigger size of bin for general waste. We recycle all that is recyclable, and still have a full bin at the end of the week, The reduction in collections will only cause vermin and fly tipping on a greater scale.
- As a council tax paying household, i believe there should be a proper consultation, one that is more openly advertised and with proper options not just the above options. Anyone ticking the above boxes are helping the councillors to introduce the reduction as they will say everyone wanted the options above, this wrong as most would pick for the service to stay the same as it is now, a weekly service.
51. There have been weekly collections all my life. So now you proposed to reduce what we had in the 1950s! This society is going backwards. The smell of bins will be horrendous with fewer collections. Fly tipping will be increased as larger households will run out of space. This is a retrograde step. I object to fewer collections.
52. You would like my View well here it is!!! Stick to weekly bin collections as our council tax keeps going up!!!! your intentions all a long was to go to 2 weekly bin collections. We recycle all our waste and our bin is full at the end of 1 week. We even have a compost bin we use for food waste. People will fly tip more! How about stop paying staff councillors high wages and spend that on waste collections!!! This isn't a fair questionnaire either as the majority of people will of course chose the 2 week collection and the biggest bin! who in the right mind would agree to a 3 week collection and a tiny bin! And i bet you will say the people have chosen this system!! What a load of rubbish!!! Hate this council

Appendix C - Comments received by email

Mon 03/07/2017 17:15

Can I ask that issues with the management of domestic and commercial waste on illegal encampments are considered in the consultation.

A few years ago I suggested that domestic waste bins were provided to cut the cost of clearing up fly tipping on the site. Since their introduction domestic waste may be being managed to a degree, but there is still the remaining issue of commercial waste management and associated costs of clearing sites once vacated. Without providing a means for disposal this is likely to continue.

As a standard it takes a week to obtain an eviction notice from the court in order to move on visitors on an illegal encampment and issues will arise within that period which bring comment from residents/media. Managing issues with waste would manage a large part of the impact on neighbours.

As temporary visitors they are unable to obtain a licence to dispose of commercial waste. Their only legal alternative for disposal is to hire skips, but this is unlikely to be enforceable against many short stay visitors on illegal encampments. Has the council considered checking if the visitors are likely to need to dispose of commercial waste when welfare checks are carried out and if savings could be made: is the cost of providing a skip for commercial waste disposal and working with the visitors less than the cost of clearing fly tipping from the site?

Also with regard to Romany rituals around sanitation and toilet facilities could some type of management be put into place? As the cost of temporary toilet provision would be prohibitive is there a cheaper facility which could be provided?

Although there is a project underway to provide a form of temporary stopping site for visitors travelling through the area, with a waste management plan in place, there is also a risk that there will continue to be occasional illegal encampments to manage as well.

Sun 09/07/2017 13:07

hello you will need to have recycling bins like north lincs otherwise it will not work as my boxes were taken half full

REDACTED PERSONAL INFORMATION

Sun 09/07/2017 14:47

I have just completed the survey adding comments and when I came to submit I was asked to 're do it as the time had run out. Surely this should not be time limiting as I thought the council wanted the general public to have input obviously not.

Follow up email: Tue 11/07/2017 18:30

Thank you for your reply but it appears I am now unable to complete the survey as it has moved to past consultations and cannot be accessed due to it being closed.

Although I would prefer a weekly collection of general waste but that was not a consideration on the form so would go with bi weekly on the form 1. What is going to happen if we are not around on the allotted bi weekly date It is not very hygienic to leave a bin four weeks (our bin lives in our garage so we couldn't ask a neighbour to put it out. In the past even though I have contacted the waste department 're leaving my bin at a neighbour's house giving my house number and theirs collection was refused and it's not advisable to leave a bin outside for several days if one is away as it is advertising one is away) 2. My suggestion would be that families with 3 or

more children under the age 5 (increase load of nappies) have the opportunity to have two general waste bins other councils offer this and those who have requested the service have found it very useful.

Regarding recycling we support this service and our boxes are frequently full. We use the local tip and local charities for further recycling. A more robust recycling system would help with the inclusion other items. Regarding fly tipping 1. General public who are rate payers should be allowed to visit the tip more than twice a day 2. Heavier fines for those who are found to be fly tipping 3. Council to publish on a regular basis charities who will collect unwanted items. 4. Reduce the cost of picking up large items. Dog fouling 1. Large fines the culprits 2. Cctv in the worst affected areas to catch those responsible. General comments 1. Empty street bins more frequently 2. Ensure the council collects unpaid rates even if it means going through the court system this would provide a lot of revenue that is currently bring lost. 3. Consider the rate payers who comply and target and engage with those who don't. We do have a smart meter, low energy light bulbs, loft fully insulated, double glazing and cavity wall insulation

I think I have replied to most of the questions that were on the form so I hope you will be able to include these despite me not having access to the form.

Sun 09/07/2017 16:15

Keep the collections as they are, fly tipping is out of control now, how bad will it get if bins are left for weeks on end? What will the stench be like.

Why are some people allowed to dump rubbish and all council eyes are blind folded? If we are short of money why do we continue having twice as many councillors as is needed? If you provide less services cut the number of councillors at the same time. Doubt that will happen nor will councillors numbers be discussed.

Sun 09/07/2017 16:23

Empty the boxes weekly and the green bin fortnightly, my boxes are overflowing and my bin is mt.

Mon 10/07/2017 07:51

Dear sirs.

With reference to the NELINCS waste collection survey.

I spent some time completing this survey with a comprehensive response which I thought would be of value; only to find that when submitted the program had timed out and needed me to start from afresh.

If NELINCS council really did value public input in to these decisions you need to allow time for a fair response.

Also when requesting people's thoughts on size of collection boxes, allow the public to tell you there thoughts not a selection of sizes that is a total barrier to recycling. Try looking at what other councils do to achieve best practice and adopt it. It's not rocket science.

Mon 10/07/2017 12:42

How naive do you extremely well paid councillors have to be. Reduction in services, and constant hikes in costs increase the instances of fly tipping. One sure way to

reduce Costs is to place an immediate ban on councillors expenses and salaries
Lead by example.

Mon 10/07/2017 12:48

I think if bins are being planned on being collected 2-3 weeks then nelc need to make our recycling bins twice the size so we can recycle more efficiently

Tue 11/07/2017 09:45

I strongly object to not having my dust bins emptied every week. I pay for this service.

I also pay extra for my brown bin.

I also cut the grass verge in front of my property.

If you change it can I have a reduction in my rates then I can go to a third party contacted. Or even get a group of house holders to-getter.

Whenever reductions are needed it's always the front line.

I think you can find savings elsewhere.

The survey on this subject is not going to give a proper answered to the subject.

There is no choice for a one week collection. So I think it has been rigged to to give answers others seek.



Prepared by:

Commissioning and Strategic Support Unit
(CSSU) and Communications and Marketing
Team
Resources Directorate
Municipal Offices
Town Hall Square
Grimsby
DN31 1HU