

Hello...

## Welcome to the first edition of Families Matter

In this edition you will find out about:

- What's on over the summer holidays
- Help for childcare
- Childcare funding information, including a real life case study
- How to choose a childcare provider



Information

## Childcare - help with costs: a real life case study!

After her child turned two, Abi applied for and used the free 15 hours per week 2 year childcare funding over 38 weeks of the year. Using this service freed up time for Abi to go into both study and obtain a voluntary work position. This progressed into permanent, paid work.

When her child turned 3, Abi became eligible for the extended 30 hours free entitlement of 3 and 4 year old funding.

If it wasn't for the funding Abi wouldn't have been free to seek employment. Now her childcare bill is £0, saving her £100s a year.

To find out about these childcare options please visit:  
[www.childcarechoices.gov.uk](http://www.childcarechoices.gov.uk)

## Are you worrying about paying for childcare?

Here are some options that could help you with the cost.

### 2 year funding:

Means tested funding for those with 2 year olds.

### 3 & 4 year funding:

All 3 & 4 year olds are entitled to 15 hours, but working parents can now claim an additional 15 hours providing they meet the criteria.

### Tax Free Childcare:

For working families with children aged 0-11 years.

### Tax Credits for Childcare:

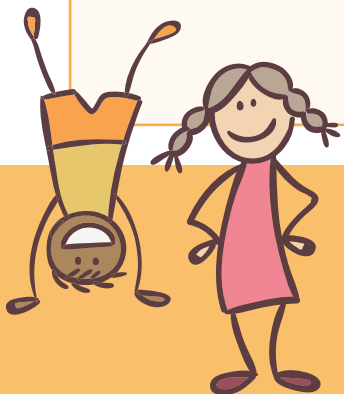
For working families with children under 16.

### Universal Credit for Childcare:

For working families claiming Universal Credit with children under 16.

### Childcare Vouchers:

For working families with children under 16.





## What's on?

**For the next few weeks, Abi and Kirby from Families First will be going out in the community and talking to parents about childcare options.**

They'll be running a selfie competition until the end of August, where you could be in with a chance of winning a £50 Love to Shop voucher. All you need to do is get a selfie with either Abi or Kirby and post it to our Facebook page with the hashtag #FFISNEL and #FFISSELFIE

To keep up to date with Families First news - and to find out Abi and Kirby's whereabouts - follow us on Facebook and Twitter.

Don't forget to check your local Family Hub's for activities and trips!

Visit our pages for information on more activities available.

[www.nelincs.gov.uk/fis](http://www.nelincs.gov.uk/fis)

[www.facebook.com/FamiliesFirstNEL](https://www.facebook.com/FamiliesFirstNEL)

[www.twitter.com/ff\\_nelincs](https://www.twitter.com/ff_nelincs)



## How can I be sure that I am choosing the right childcare provider for my child?

**We understand that choosing a childcare provider can be a difficult process, especially if you're doing it for the first time.**

It's always a good idea to visit a few settings before making your final choice, as this will help you compare and give you a good feel for the place.

While you're looking around, have a look at the children who are already there, do they seem calm, happy and busy? Are they playing and talking together? How about the staff? Are they friendly and do they seem to enjoy their work?

It's also a good idea to have a look at the equipment and toys to see how clean and well maintained they are.

Another great way to get an overview of the setting is to have a look at their latest Ofsted report, which you can view on the [www.gov.uk](http://www.gov.uk) website, this will give you a good idea about the setting's strengths.



### Useful Contacts

For 2 year funding: 01472 326292 Option 1

Ofsted: 0300 123 1231

For 3 & 4 year funding queries - HMRC: 0300 123 4097

School Admissions: 01472 326291 option 3

Free School Meals: 01472 323732

Tax Credit Helpline: 0345 300 3900

Child Benefit: 0300 200 3100

Housing Advice: 01472 326296 option 1

Non Emergency NHS: 111

Out of Hours GP: 01472 256222

Non Emergency Police: 101

ChildLine: 0800 1111



If you have any feedback or ideas for the newsletter, or if you would like to be added to our mailing list please get in touch, we would love to hear from you!  
Send your name to [ffis@nelincs.gov.uk](mailto:ffis@nelincs.gov.uk)